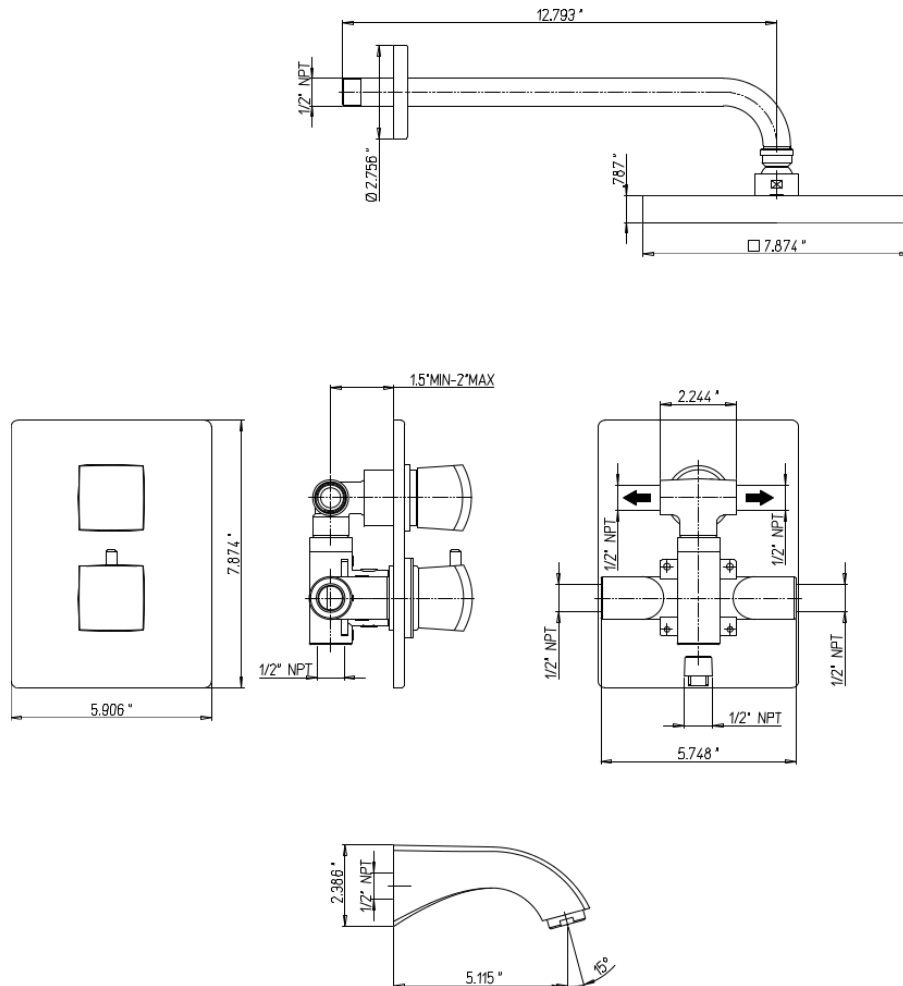




# 89-691



Lady thermostatic valve with 2-way  
diverter volume control  
1/2" inlet connections  
Rough included.



## Lady Series

89-691

Thermostatic Valve,  
Transitional Styling

### STANDARDS

- Compliant with ASME A112.18.1-B125.1
- Compliant with AB1953
- Compliant with ANSI NSF61 – Annex G
- Certified by CSA International
- Compliant with ANSI A117.1

### Finishes

	89CR691	89PW691	89OK691
Polished Chrome	X		
Brushed Nickel		X	
Satin Gold			X

### Features

	89CR691	89PW691	89OK691
Solid Brass Construction	X	X	X
2-Way Diverter Volume Control	X	X	X
Independent Temperature Control	X	X	X
Thermostatic Cartridge	X	X	X
Extra Bottom Exit To Add Extra Volume Control	X	X	X
Step-By-Step Installation Instructions	X	X	X
8.82 GPM	X	X	X

1-866-668-6690  
1571 MAIN RD  
NEWFIELD, NJ 08344

[www.paini-usa.com](http://www.paini-usa.com)