

Model : E036122

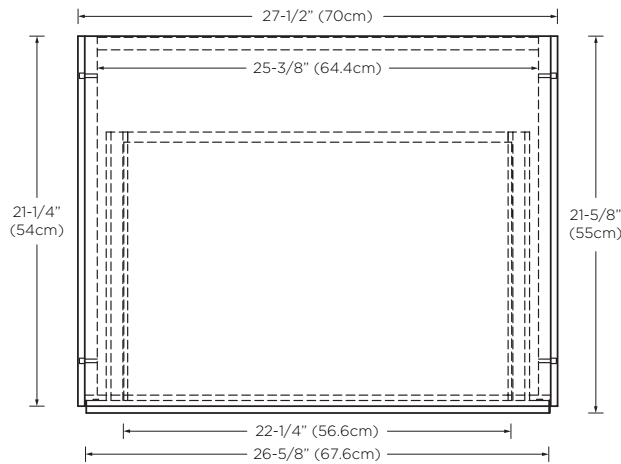
Designed By: **MATTEO THUN & ANTONIO RODRIGUEZ** | ITALY

- Features :**
- Includes Wide White TechStone™ (Q28) top
 - Locking Italian Rotola wheels
 - 2 push open/close, full-extension drawers with Hettich brand hardware
 - Glass bottom drawer box
 - Woven fiber drawer liners
 - Push-open drawers
 - Fully finished interiors
 - Solid wood construction (no MDF)
 - Multi-step polyurethane finish resists moisture and scratches

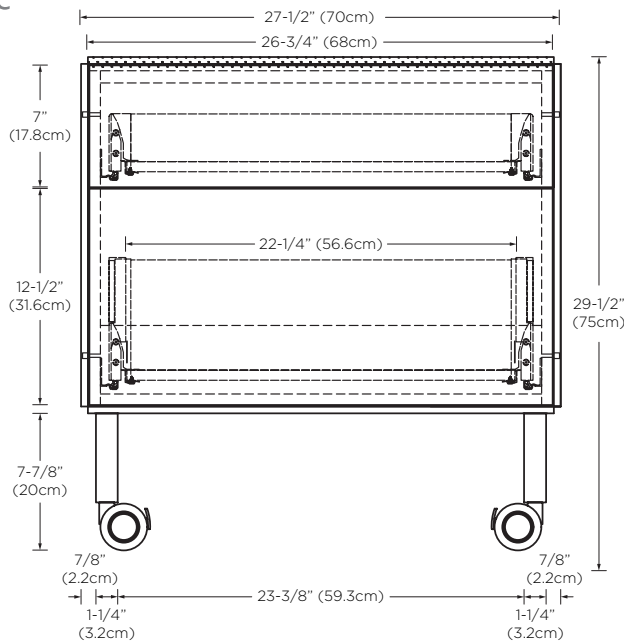
All Ronbow cabinets are made of solid hardwood or hardwood plywood and meet strict CARB II Standards. No particle board or Micro-Density Fiberboard (MDF) are used.

- Available Finish :**
- American Walnut with Glossy Black legs (E56)
 - American Walnut with Sabbia Beige drawer fronts and sides with Glossy Black legs (E90)

Top



Front



Side

