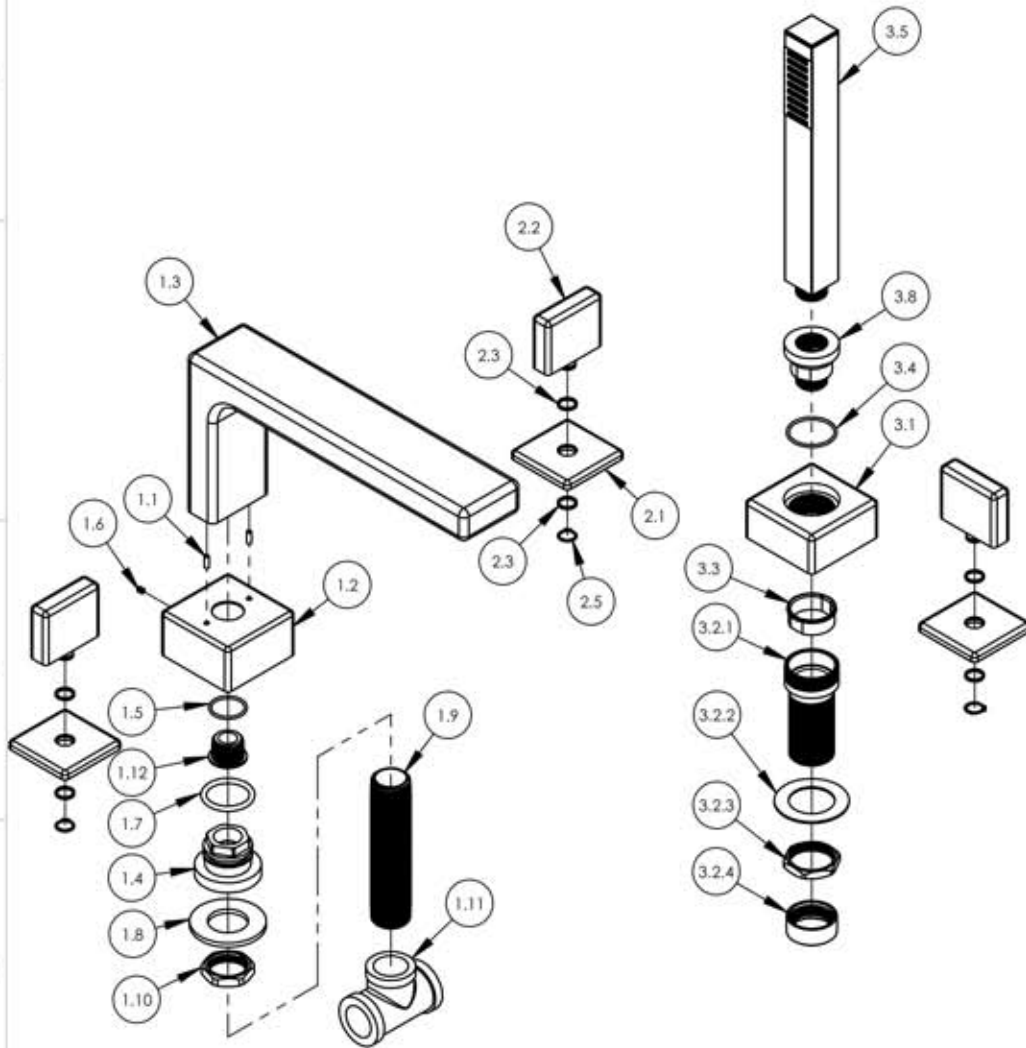


A

B

C

D



ITEM NO.	PART NUMBER	DESCRIPTION	QTY.
1	3-098/00	ASSY. SPOUT ROMAN TUB, MIX SERIES	1
1.1	92158	DOWEL PIN, 1/8" X 3/8"L	2
1.2	11221/00	ESCUTCHEON, SPOUT MIX SERIES	1
1.3	10949/00	SPOUT, DECK TUB 290 MIX	1
1.4	P27018	QUICK CONNECT 3/4"-NPT	1
1.5	90020	O-RING, 7/8"ID X 1"OD X 1/16"THK., AS-568-020	1
1.6	92005	SET SCREW, CUP PT 6-32UNC THREAD 3/16"L	1
1.7	90216	O-RING, 1-1/8"ID X 1-3/8"OD X 1/8"THK., AS-568-216	1
1.8	P35317	S.S. WASHER O.D. 2" I.D. 1" 1/16	1
1.9	P28024	NIPPLE SHANK, 3/4" NPT-NPSM-NPT X 4.5"	1
1.10	P28022	NUT, 3/4" NPSL	1
1.11	P28025	3/4" BRASS TEE F/DECK VALVE	1
1.12	11220	SPUD SCREW, 1/2"-NPT CONNECTOR	1
2	3-101/00	ASSY, HANDLE BLADE MIX	3
2.1	10932/00	ESCUTCHEON, HANDLE MIX SERIES	1
2.2	10923/00	HANDLE, BLADE MIX SERIES	1
2.3	92176	WEAR WASHER	2
2.4	92005	SET SCREW, CUP PT 6-32UNC THREAD 3/16"L	1
2.5	92177	RETAINING RING, 7/16" SHAFT	1

E

ZONE	REV.	DESCRIPTION	DATE	APPROVED
REVISIONS				

1261 LOGAN AVENUE
COSTA MESA, CALIFORNIA 92626
PHONE: 714.361.4800
FAX: 714.617.3120

PHYLIRICH®

Defining Luxury Since 1959

PROPRIETARY AND CONFIDENTIAL

THE INFORMATION CONTAINED IN THIS DRAWING IS THE SOLE PROPERTY OF RISS MANUFACTURING. ANY REPRODUCTION IN PART OR AS A WHOLE WITHOUT THE WRITTEN PERMISSION OF RISS MANUFACTURING IS PROHIBITED.

-	-	INTERPRET GEOMETRIC DIMENSIONING & TOLERANCING IN ACCORDANCE WITH ASME Y14.5-2009 & ASME Y14.41-2003 STANDARDS, UNLESS OTHERWISE SPECIFIED. DIMENSIONS ARE IN INCHES. TOLERANCES ARE:		
NEXT ASSY	USED ON	FRACTIONS ±1/64"	DECIMALS X.X: ±.1 X.XX: ±.01 X.XXX: ±.005	ANGULAR ±.5°
APPLICATION		MATERIAL	NAME	DATE
FINISH		DRAWN	CA	11/27/2013
DO NOT SCALE DRAWING		CHECKED	MAF	

DECK HAND SHOWER KIT, BLADE
HANDLE, MIX SERIES

SIZE	ASM/PRT NO.	REV
A	290-48/00	-
SCALE: 1:5	WEIGHT: lbs.	SHEET 1 OF 2

5

4

3

2

1