

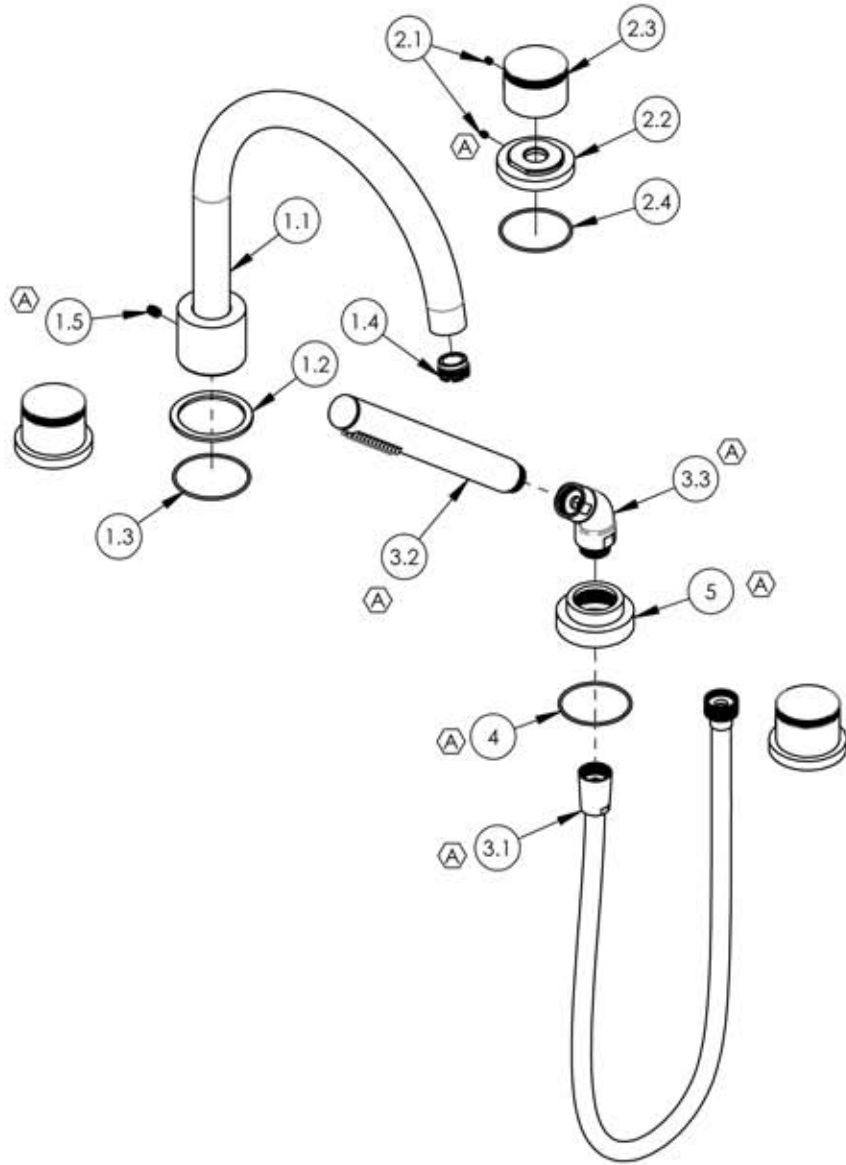
A

B

C

D

E



ITEM NO.	PART NUMBER	DESCRIPTION	QTY.
1	3-394/00	ASSY, HIGH ARC TUB SPOUT, DECK TUB BASIC II	1
1.1	2-128/00	SUB ASSY, HIGH ARC TUB SPOUT, DECK TUB BASIC II	1
1.2	11186/00	BASE FLANGE, BASIC II	1
1.3	90033	O-RING, 2"ID X 2-1/8"OD X 1/16"THK, AS-568-033	1
1.4	P05024	AERATOR CACHE COIN SLOT, M21.5X1.0 FULL FLOW	1
1.5	92127	SET SCREW, CUP POINT, 1/4-20 X 5/16" L. STAINLESS STEEL	1
2	3-433/00	ASSEMBLY KNURLED HANDLE, DECK TUB, BASIC II	3
2.1	92008	SET SCREW, CUP POINT 8-32, 3/16" L.	2
2.2	11344/00	ESCUTCHEON BASE, DECK TUB HANDLE, BASIC II	1
2.3	11165/00	BASE HANDLE, CONTEMP. BASIC II	1
2.4	90032	O-RING, 1-7/8"ID X 2"OD X 1/16"THK, AS-568-032	1
3	4-585/00	HAND SHOWER HEAD, HOSE, ELBOW, CYLINDER	1
3.1	3-049/00	ASSY, HOSE KIT, HANDSHOWER	1
3.2	3-471/00	ASSY, ROUND HANDSHOWER, CONTEMPORARY	1
3.3	3-050/00	ELBOW ASSEMBLY	1
4	90032	O-RING, 1-7/8"ID X 2"OD X 1/16"THK, AS-568-032	1
5	P18030/00	BASE, DECK HANDHELD, BASIC	1

ALL	REV.	DESCRIPTION	DATE	APPROVED
A		UPDATE HAND SHOWER, SPOUT & HANDLE ASSY	6/27/2019	AMM

REVISIONS				
Defining Luxury Since 1959				

PROPRIETARY AND CONFIDENTIAL
 THE INFORMATION CONTAINED IN THIS DRAWING IS THE SOLE PROPERTY OF RJS MANUFACTURING. ANY REPRODUCTION IN PART OR AS A WHOLE WITHOUT THE WRITTEN PERMISSION OF RJS MANUFACTURING IS PROHIBITED.

NEXT ASSY	USED ON	FRACTIONS	DECIMALS	ANGULAR
		±1/64"	X.X: ±.1 X.XX: ±.01 X.XXX: ±.005	±.5°
APPLICATION		NAME	DATE	
MATERIAL		DRAWN	11/17/2015	
FINISH		CHECKED		

DO NOT SCALE DRAWING

DECK TUB SET WITH HAND SHOWER, KNURLED HANDLES, BASIC II SERIES

SIZE **A** ASM/PRT NO. **230-48/00** REV **A**

SCALE: 1:5.25 WEIGHT: lbs. SHEET 1 OF 2

5

4

3

2

1