

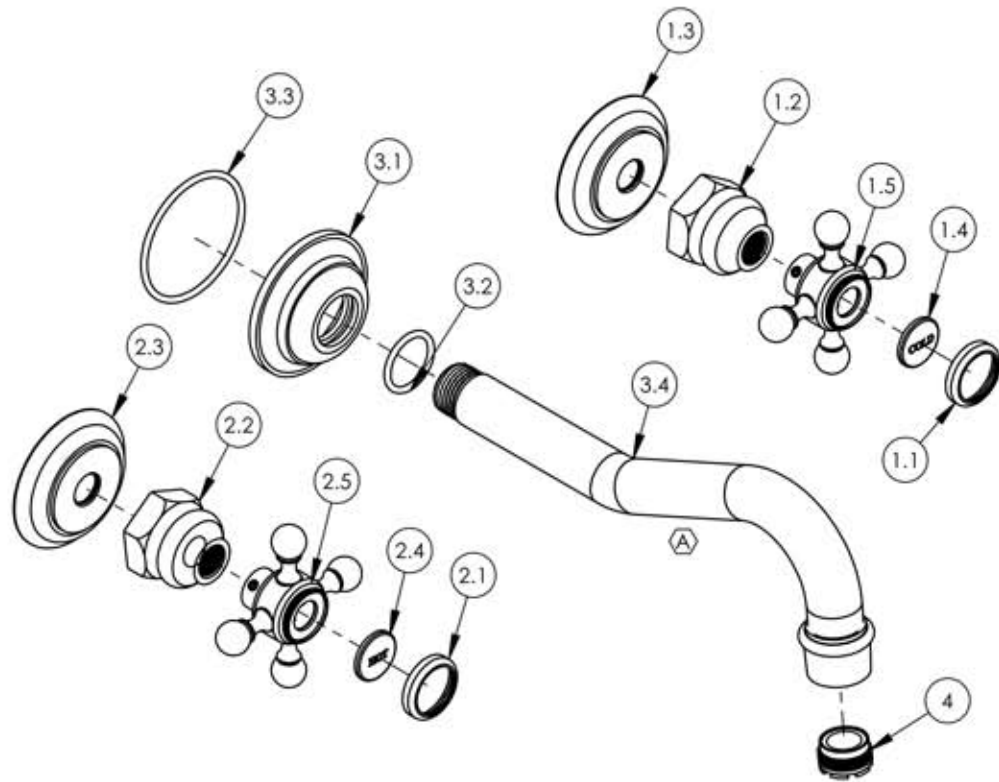
A

B

C

D

E



ITEM NO.	PartNo	DESCRIPTION	QTY.
1	3-142C/00	CROSS HANDLE, WALL/SHOWER, 500 SERIES	1
1.1	10538/00	CAP RING FOR 500 SERIES BUTTON	1
1.2	10621/00	BASE HUB NUT	1
1.3	10618/00	ESCUTCHEON, TRADITIONAL 500	1
1.4	11098	PLASTIC BUTTON, COLD	1
1.5	2-180/00	SUB ASSY. CROSS HANDLE HUB	1
2	3-142H/00	CROSS HANDLE, WALL/SHOWER, 500 SERIES	1
2.1	10538/00	CAP RING FOR 500 SERIES BUTTON	1
2.2	10621/00	BASE HUB NUT	1
2.3	10618/00	ESCUTCHEON, TRADITIONAL 500	1
2.4	11099	PLASTIC BUTTON, HOT	1
2.5	2-180/00	SUB ASSY. CROSS HANDLE HUB	1
3	3-390/00	WALL SPOUT, HENRI SERIES	1
3.1	11158/00	FLANGE, WALL TUB	1
3.2	90118	O-RING, 7/8"ID X 1-1/16"OD X 3/32"THK., AS-568-118	1
3.3	90137	O-RING, 2-1/16"ID X 3/32"THK., AS-568-137	1
3.4	2-108/00	SUB. ASSY. WALL SPOUT	1
4	P05024	AERATOR CACHE COIN SLOT, M21.5X1.0 FULL FLOW	1

ZONE	REV.	DESCRIPTION	DATE	APPROVED
C4	A	UPDATED COMPONENTS	7/25/2018	RAH

REVISIONS				

1261 LOGAN AVENUE COSTA MESA, CALIFORNIA 92626 PHONE: 714.361.4800 FAX: 714.617.3120		<h1>PHYLORICH®</h1> <p>Defining Luxury Since 1959</p>		<b>PROPRIETARY AND CONFIDENTIAL</b> THE INFORMATION CONTAINED IN THIS DRAWING IS THE SOLE PROPERTY OF RISS MANUFACTURING. ANY REPRODUCTION IN PART OR AS A WHOLE WITHOUT THE WRITTEN PERMISSION OF RISS MANUFACTURING IS PROHIBITED.	
---	--	---	--	---	--

NEXT ASSY		USED ON		INTERPRET GEOMETRIC DIMENSIONING & TOLERANCING IN ACCORDANCE WITH ASME Y14.5-2009 & ASME Y14.41-2003 STANDARDS, UNLESS OTHERWISE SPECIFIED. DIMENSIONS ARE IN INCHES. TOLERANCES ARE: FRACTIONS ±1/64"    DECIMALS X.X: ±.1    ANGULAR X.XX: ±.01    X.XXX: ±.005		
APPLICATION		MATERIAL		NAME    DATE DRAWN    11/2/2015		
FINISH		DRAWN		CHECKED    GRE		
<b>DO NOT SCALE DRAWING</b>						

<b>WALL TUB SET, CROSS HANDLES, HENRI SERIES</b>					
SIZE	ASM/PRT NO.		REV		
<b>A</b>	161-56/00		<b>A</b>		
SCALE: 1:3	WEIGHT: lbs.	SHEET 1 OF 2			

5

4

3

2

1