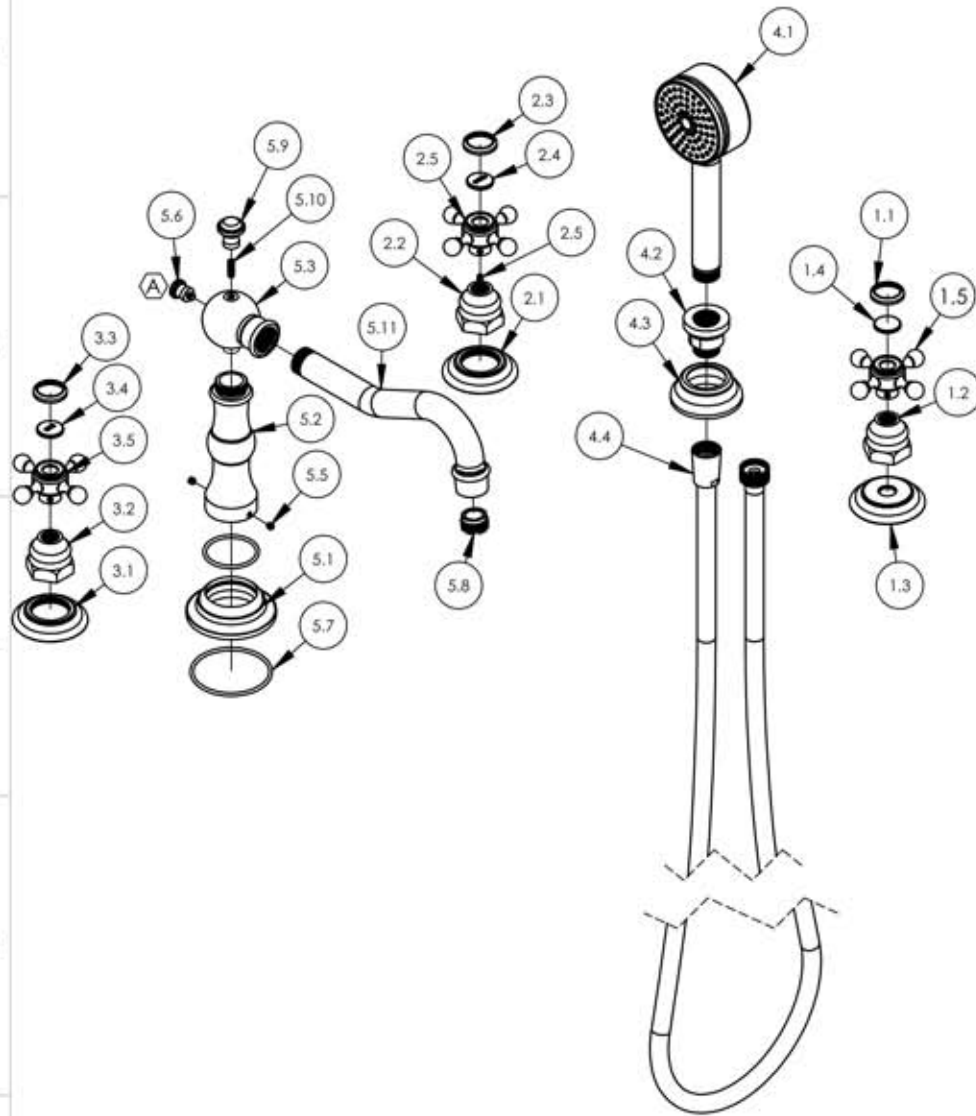


A

B

C

D



ITEM NO.	PART NUMBER	DESCRIPTION	QTY.
1	3-142B/00	CROSS HANDLE, WALL/SHOWER, 500 SERIES	1
1.1	10538/00	CAP RING FOR 500 SERIES BUTTON	1
1.2	10621/00	BASE HUB NUT	1
1.3	10618/00	ESCUTCHEON, TRADITIONAL 500	1
1.4	11097	PLASTIC BUTTON, BLANK	1
1.5	2-180/00	SUB ASSY. CROSS HANDLE HUB	1
2	3-382C	CROSS HANDLE, DECK TUB (COLD)	1
2.1	10620/00	ESCUTCHEON, TRADITIONAL RT 1-1/4"-20	1
2.2	10621/00	BASE HUB NUT	1
2.3	10538/00	CAP RING FOR 500 SERIES BUTTON	1
2.4	11098	PLASTIC BUTTON, COLD	1
2.5	2-180/00	SUB ASSY. CROSS HANDLE HUB	1
3	3-382H	CROSS HANDLE ASSEMBLY, DECK TUB (HOT)	1
3.1	10620/00	ESCUTCHEON, TRADITIONAL RT 1-1/4"-20	1
3.2	10621/00	BASE HUB NUT	1
3.3	10538/00	CAP RING FOR 500 SERIES BUTTON	1
3.4	11099	PLASTIC BUTTON, HOT	1
3.5	2-180/00	SUB ASSY. CROSS HANDLE HUB	1
4	3-384/00	HAND SHOWER TUB TRIM	1
4.1	3-066/00	HANDSHOWER, SINGLE FUNCTION STILO 70	1
4.2	11216/00	ADAPTOR, HANDHELD MIX SERIES	1
4.3	P18001_1/00	K6005 TRIM	1
4.4	3-049/00	ASSY. HOSE KIT, HANDSHOWER	1

E

ZONE	REV.	DESCRIPTION	DATE	APPROVED
B5	A	-SUB ASSY. 3-395/00 WAS UPDATED	11/4/2015	GRE

REVISIONS

1261 LOGAN AVENUE
COSTA MESA, CALIFORNIA 92626
PHONE: 714.361.4800
FAX: 714.617.3120

PHYLORICH®

Defining Luxury Since 1959

PROPRIETARY AND CONFIDENTIAL

THE INFORMATION CONTAINED IN THIS DRAWING IS THE SOLE PROPERTY OF RISS MANUFACTURING. ANY REPRODUCTION IN PART OR AS A WHOLE WITHOUT THE WRITTEN PERMISSION OF RISS MANUFACTURING IS PROHIBITED.

INTERPRET GEOMETRIC DIMENSIONING & TOLERANCING IN ACCORDANCE WITH ASME Y14.5-2009 & ASME Y14.41-2003 STANDARDS, UNLESS OTHERWISE SPECIFIED. DIMENSIONS ARE IN INCHES. TOLERANCES ARE:	FRACTIONS ±1/64"	DECIMALS X.X: ±.1 X.XX: ±.01 X.XXX: ±.005	ANGULAR ±.5°
NEXT ASSY	USED ON		
APPLICATION			
MATERIAL		NAME	DATE
FINISH	DRAWN	LLO	10/29/2015
DO NOT SCALE DRAWING	CHECKED	GRE	

DECK TUB W/ HAND SHOWER, CROSS HANDLES, HENRI SERIES

SIZE	ASM/PRT NO.	REV
A	161-48/00	A
SCALE: 1:6	WEIGHT: lbs.	SHEET 1 OF 3

5

4

3

2

1