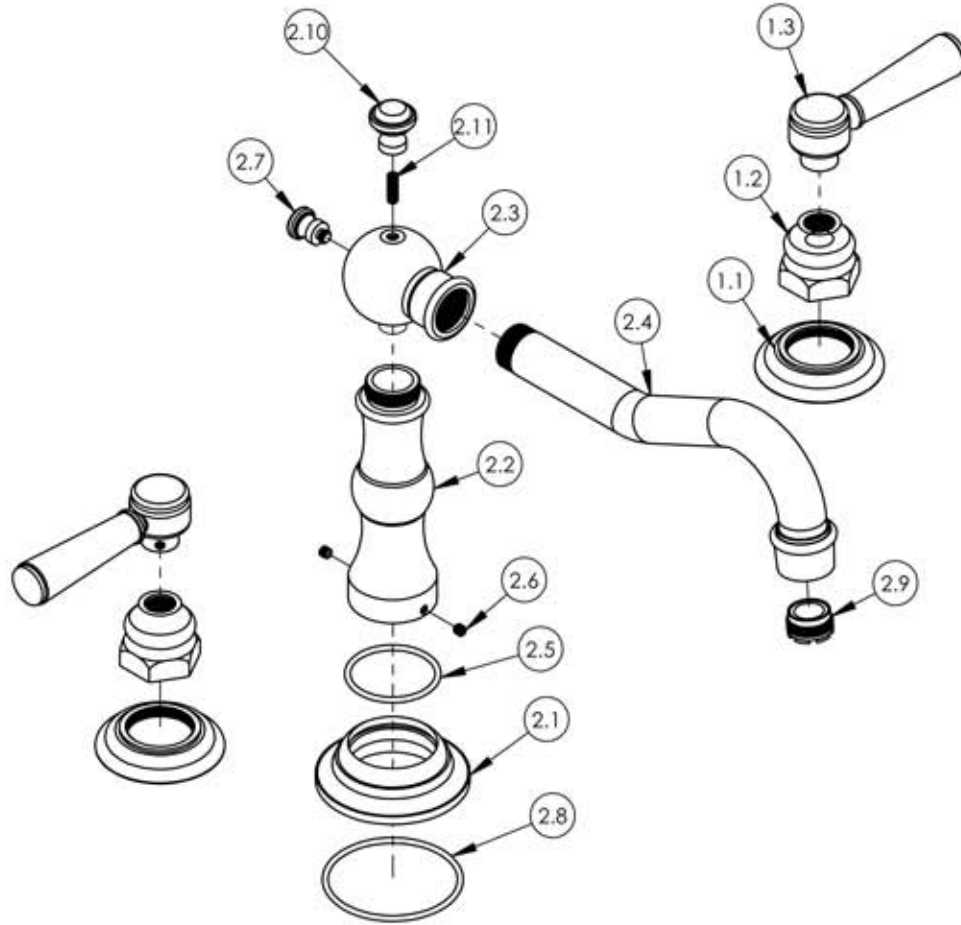


A

B

C

D



ITEM NO.	PART NUMBER	DESCRIPTION	QTY.
1	3-383	LEVER HANDLE ASSEMBLY, DECK TUB	2
1.1	10620/00	ESCUTCHEON, TRADITIONAL RT 1-1/4"-20	1
1.2	10621/00	BASE HUB NUT	1
1.3	2-141	SUB ASSY. LEVER HANDLE. 500 SERIES	1
2	3-395/00	ASSY., SPOUT, DECK TUB, MAISON SERIES	1
2.1	11273/00	ESCUTCHEON, BASE SPOUT RISER	1
2.2	11274/00	SPOUT RISER, DECK TUB	1
2.3	11275/00	BALL TRANSITION, DECK TUB RISER	1
2.4	2-146	SUB ASSY. SPOUT BRAZED AERATOR HOUSING	1
2.5	90129	O-RING, 1-9/16"ID X 3/32"THK., AS-568-129	1
2.6	92024	SET SCREW, CUP POINT 10-24UNC 3/16" LENGTH	2
2.7	11152/00	FINIAL END BACK, TRADITIONAL	1
2.8	90142	O-RING, 2-3/8"ID X 3/32"THK., AS-568-142	1
2.9	P05024	AERATOR CACHE COIN SLOT, M21.5X1.0 FULL FLOW	1
2.10	11153/00	POP-UP KNOB, TRADITIONAL	1
2.11	92152	SET SCREW, CUP PT. 10-24 UNC X 5/8"L	1

E

ALL	REV.	DESCRIPTION	DATE	APPROVED
	A	-SUB ASSY. 3-395/00 WAS UPDATED	11/4/2015	GRE

REVISIONS

1261 LOGAN AVENUE
COSTA MESA, CALIFORNIA 92626
PHONE: 714.361.4800
FAX: 714.617.3120

PHYLORICH®

Defining Luxury Since 1959

PROPRIETARY AND CONFIDENTIAL

THE INFORMATION CONTAINED IN THIS DRAWING IS THE SOLE PROPERTY OF RISS MANUFACTURING. ANY REPRODUCTION IN PART OR AS A WHOLE WITHOUT THE WRITTEN PERMISSION OF RISS MANUFACTURING IS PROHIBITED.

INTERPRET GEOMETRIC DIMENSIONING & TOLERANCING IN ACCORDANCE WITH ASME Y14.5-2009 & ASME Y14.41-2003 STANDARDS. UNLESS OTHERWISE SPECIFIED, DIMENSIONS ARE IN INCHES. TOLERANCES ARE:	FRACTIONS			DECIMALS			ANGULAR		
	±1/64"			X.X: ±.1			X.XX: ±.01		
				X.XXX: ±.005			±.5°		
NEXT ASSY	USED ON		APPLICATION		DRAWN	NAME	DATE	CHECKED	DATE
MATERIAL					DRAWN	LLO	11/2/2015	CHECKED	GRE
FINISH					DO NOT SCALE DRAWING				

DECK TUB SET, LEVER HANDLES, HENRI SERIES

SIZE	ASM/PRT NO.	REV
A	161-41/00	A

SCALE: 1:3.5 WEIGHT: lbs. SHEET 1 OF 2

5

4

3

2

1