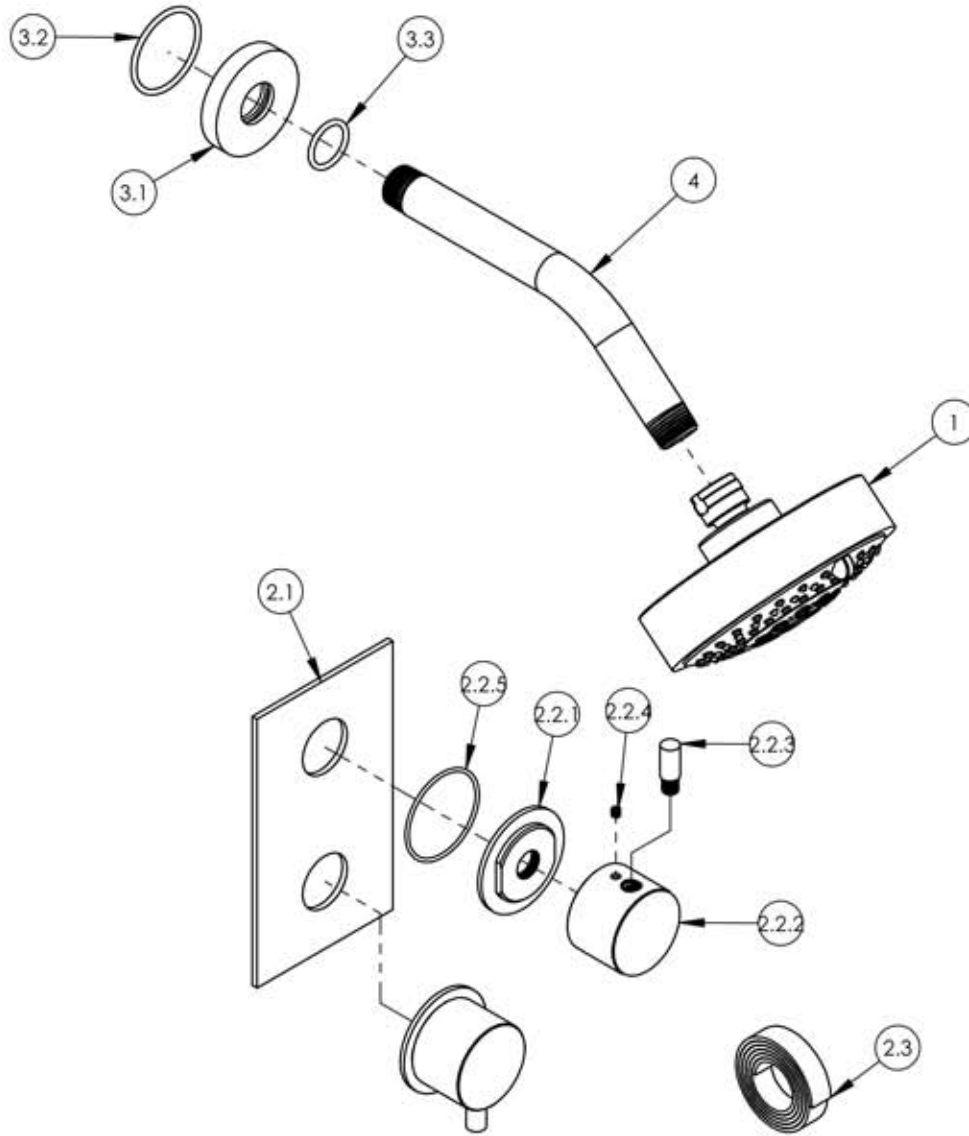


A

B

C

D



ITEM NO.	PART NUMBER	DESCRIPTION	QTY.
1	3-371/00	SHOWER HEAD, MULTI-FUNCTION, COMTEMPORARY	1
2	4-205/00	1/2" MINI THERM, TWO HNDL SHOWER TRIM, (BUILDER LINE) BASIC II	1
2.1	11212/00	PLATE, TWO HANDLE, BASIC SERIES	1
2.2	3-387/00	SUB ASSY. BASIC II LEVER (SHORT), ECONOMY	2
2.2.1	11164/00	ESCUTCHEON BASE, CONTEMP, BASIC II	1
2.2.2	11167/00	BASE HANDLE, CONTEMP, BASIC II	1
2.2.3	11211/00	HANDLE LEVER SHORT, CONTEMP, BASIC II	1
2.2.4	92008	SET SCREW, CUP POINT 8-32	1
2.2.5	90031	O-RING, 1-3/4"ID X 1-7/8"OD X 1/16"THK, AS-568-031	1
2.3	90537	1/16" TAPE FOR WALL PLATE	1
3	811/00	SHOWER FLANGE, CONTEMPORARY, ROUND	1
3.1	P16019/00	BASE SHOWER FLANGE, BASIC SERIES	1
3.2	90129	O-RING, 1-9/16"ID X 3/32THK, AS-568-129	1
3.3	90117	O-RING, 7/8"ID X 33/32"THK., AS-568-117	1
4	P16008/00	SHOWER ARM (8 INCH)	1

E

ZONE	REV.	DESCRIPTION	DATE	APPROVED
		REVISIONS		

1261 LOGAN AVENUE COSTA MESA, CALIFORNIA 92626 PHONE: 714.361.4800 FAX: 714.617.3120	<b>PHYL RICH®</b> Defining Luxury Since 1959	<b>PROPRIETARY AND CONFIDENTIAL</b> THE INFORMATION CONTAINED IN THIS DRAWING IS THE SOLE PROPERTY OF RISS MANUFACTURING. ANY REPRODUCTION IN PART OR AS A WHOLE WITHOUT THE WRITTEN PERMISSION OF RISS MANUFACTURING IS PROHIBITED.
---	---	---

-	-	INTERPRET GEOMETRIC DIMENSIONING & TOLERANCING IN ACCORDANCE WITH ASME Y14.5-2009 & ASME Y14.41-2003 STANDARDS, UNLESS OTHERWISE SPECIFIED. DIMENSIONS ARE IN INCHES. TOLERANCES ARE:
NEXT ASSY	USED ON	FRACTIONS ±1/64"
APPLICATION		DECIMALS X.X: ±.1 X.XX: ±.01 X.XXX: ±.005
MATERIAL		ANGULAR ±.5°
FINISH	DRAWN	NAME
	FME	DATE
	11/12/2015	
	CHECKED	LLO
<b>DO NOT SCALE DRAWING</b>		

**PRESSURE BALANCE SHOWER SET, LEVER HANDLE, BASIC II SERIES**

SIZE	ASM/PRT NO.	REV
<b>A</b>	230-30/00	-
SCALE: 1:3.5	WEIGHT: lbs.	SHEET 1 OF 2

5

4

3

2

1