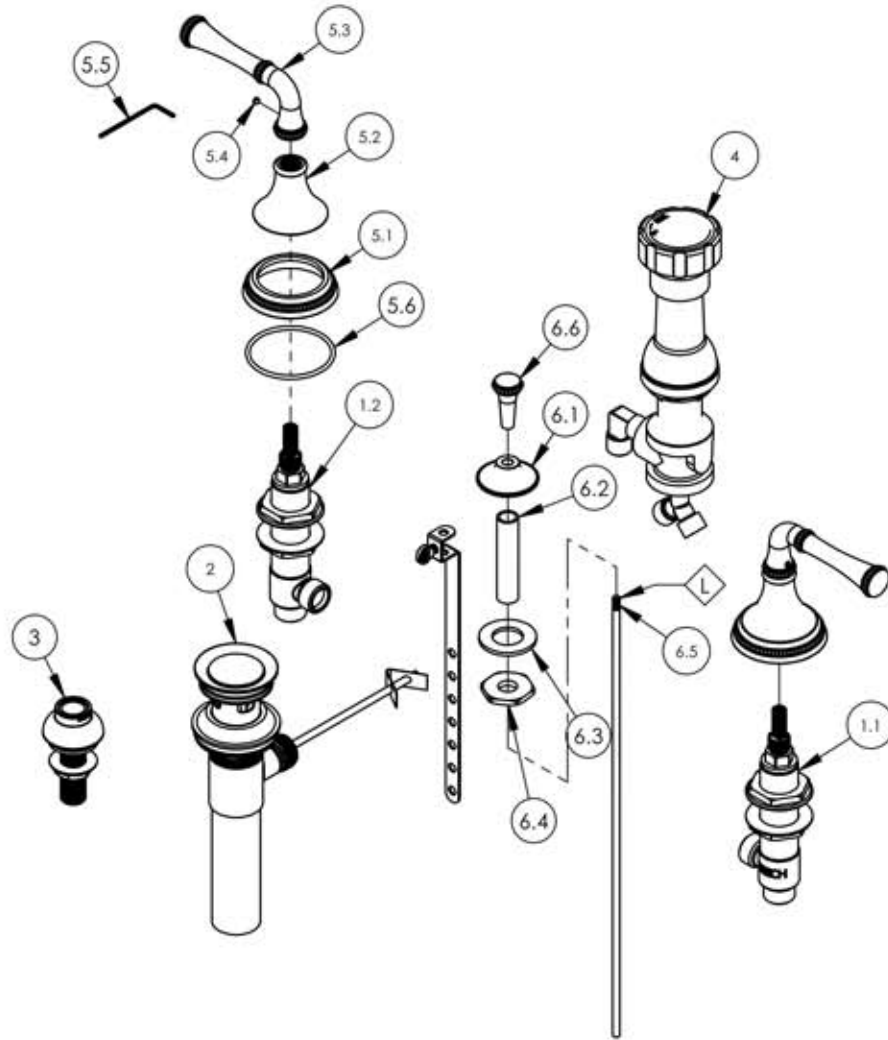


A

B

C

D



ITEM NO.	PART NUMBER	DESCRIPTION	QTY.
1	1-600	WIDESPREAD HOT AND COLD VALVES W/PLASTIC NUTS	1
1.1	1-109	WIDESPREAD VALVE COLD LAV 16PT	1
1.2	1-110	WIDESPREAD VALVE HOT LAV 16PT	1
2	3-046/00	POP-UP DRAIN ASSEMBLY (2-101, 2-102)	1
3	3-085/00	ASSY, BIDET SPRAYER	1
4	3-160/00	BIDET DIVERTER, COMPLETE	1
5	3-311/00	LEVER HANDLE, BEADED SERIES	2
5.1	10973/00	ESCUTCHEON, BEADED HANDLE	1
5.2	10972/00	HUB, TRANSITIONAL 3RING	1
5.3	10971/00	HANDLE, BEADED LEVER 3RING	1
5.4	92163	SET SCREW, CONE PT 8-32 X 1/8"L	1
5.5	P39001	HEX KEY 5/64, FOR 8-32 SET SCREW	1
5.6	90138	O-RING, 2 1/8"ID X 3/32"THK., AS-568-138	1
6	3-315/00	POP UP ROD BIDET, BEADED SERIES	1
6.1	P09007/00	K4160 POP UP GUIDE	1
6.2	P32010	9/16-20 x 56 NIPPLE FOR COMPRESSION STEM	1
6.3	P35026	3/4" SAE FLAT WASHER	1
6.4	P09006	SPECIAL HEX F/BIDET SPRAYER	1
6.5	10719/00	POP-UP ROD, 10-24, 14" LONG	1
6.6	10975/00	POP-UP KNOB BEADED	1

E

ALL	A	-DRAWING UPDATED FOR BETTER CLARITY	5/17/2016	GRE
ZONE	REV.	DESCRIPTION	DATE	APPROVED
REVISIONS				
PHYLORICH [®]				
1261 LOGAN AVENUE COSTA MESA, CALIFORNIA 92626 PHONE: 714.361.4800 FAX: 714.617.3120		Defining Luxury Since 1959		
PROPRIETARY AND CONFIDENTIAL				
<small>THE INFORMATION CONTAINED IN THIS DRAWING IS THE SOLE PROPERTY OF RISS MANUFACTURING. ANY REPRODUCTION IN PART OR AS A WHOLE WITHOUT THE WRITTEN PERMISSION OF RISS MANUFACTURING IS PROHIBITED.</small>				

-	-	INTERPRET GEOMETRIC DIMENSIONING & TOLERANCING IN ACCORDANCE WITH ASME Y14.5-2009 & ASME Y14.41-2003 STANDARDS, UNLESS OTHERWISE SPECIFIED. DIMENSIONS ARE IN INCHES. TOLERANCES ARE:		
NEXT ASSY	USED ON	FRACTIONS ±1/64"	DECIMALS X.X: ±.1 X.XX: ±.01 X.XXX: ±.005	ANGULAR ±.5°
APPLICATION		MATERIAL	NAME	DATE
FINISH		DRAWN	LLO	10/2/2015
DO NOT SCALE DRAWING		CHECKED	GRE	

FOUR HOLE BIDET SET, BEADED SERIES

SIZE	ASM/PRT NO.	REV
A	207-60/00	A

SCALE: 1:5	WEIGHT: lbs.	SHEET 1 OF 1
------------	--------------	--------------

5

4

3

2

1