

**SPECIFICATIONS**

**PARMA™ SINGLE HANDLE VESSEL LAVATORY FAUCET**

**Model**

D225158

**Description**

- Ceramic disc valve
- 12 1/2" high swivel spout, 8 1/2" spout length
- 360° spout swivel
- Includes metal grid strainer DA505928, with or without overflow with color-matching cover and flange and chrome plated tailpiece
- 4" deck plate DA667229 sold separately for single hole mounting
- Optional hot and cold button included
- 1.2gpm (4.5L/min) maximum flow rate @60 psi
- Meets CEC Requirement

**Standards**



NSF/ANSI 372

• NSF/ANSI 372

MEETS ASME A112.18.1M/A112.18.1

• ASME A112.18.1M/A112.18.1

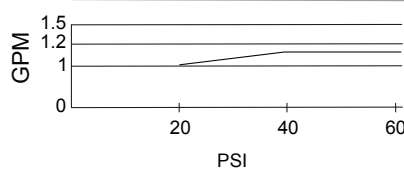


• ADA Accessibility Guidelines for Buildings and Facilities - 309.4 Operation for Operable Parts

**Warranty**

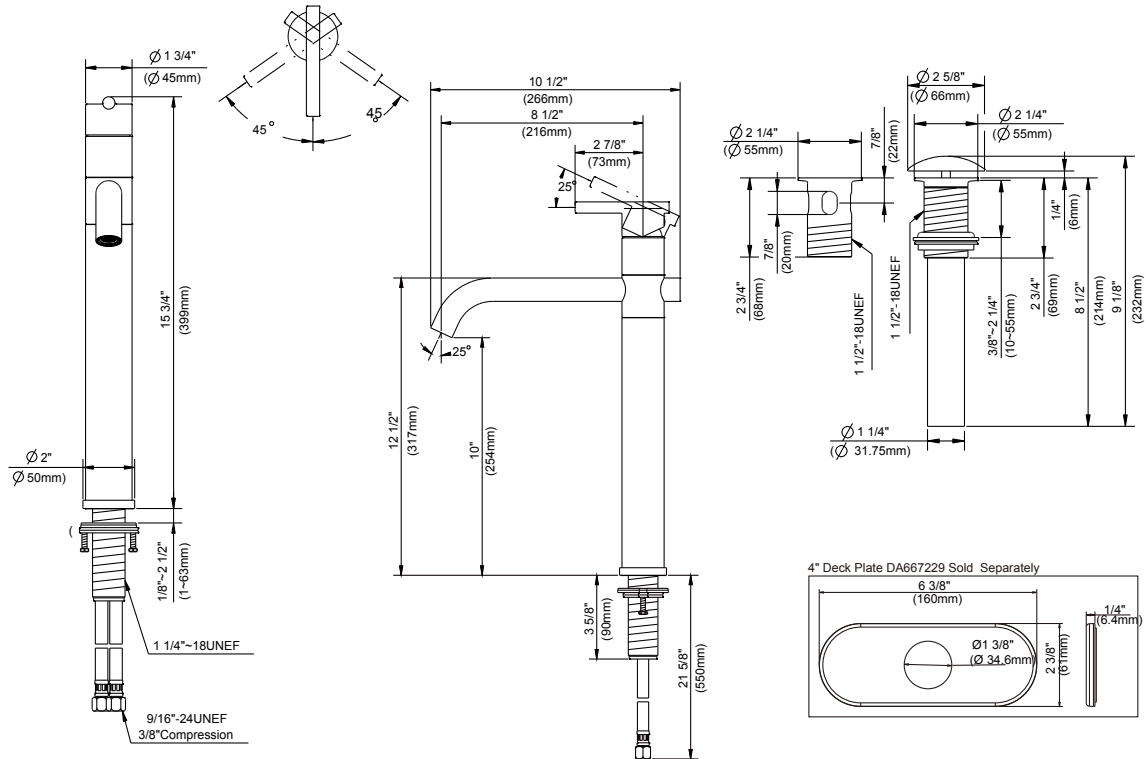
Danze products are covered by a manufacturer's limited "lifetime" warranty for manufacturing defects.

**Flow Rate**



**Finishes Available**

- Chrome
- Other: Refer to Price List for additional finish



**Submittal Information:**

Job Name: \_\_\_\_\_  
 Contractor: \_\_\_\_\_

Location: \_\_\_\_\_  
 Contact #: \_\_\_\_\_