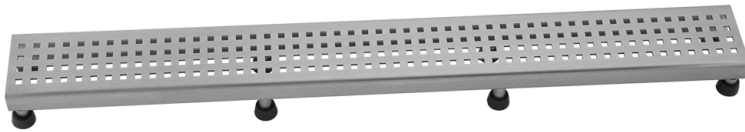


24" Channel Drain Square Dotted Grate  
Model #: 6222-24-

**FEATURES:**

- 304 stainless steel construction
- Nominal Size: 24"
- Key included to remove grate for easy cleaning
- Adjustable feet for perfect installation
- JACLO channel drain body sold separately
- Standard finishes: BSS & PSS. Additional finishes available: BKN, BU, EB, JG, MBK, ORB, PB, PG, SB, SDB, SG, TB, WH. Call for pricing and availability

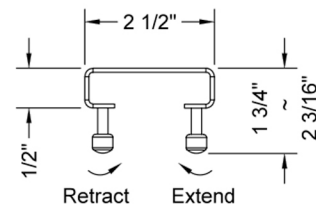
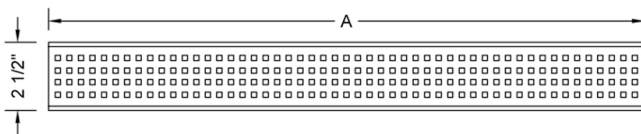


**AVAILABLE FINISHES:**

Polished Stainless (PSS)    Brushed Stainless (BSS)

**SPECIFICATION DRAWING:**

JACLO SQUARE GRATE ONLY		
PART. #	DESCRIPTION	A
6222-24-XXX	24" SQUARE GRATE	22 1/4"
6222-32-XXX	32" SQUARE GRATE	30 1/8"
6222-36-XXX	36" SQUARE GRATE	34 1/8"
6222-42-XXX	42" SQUARE GRATE	42"
6222-48-XXX	48" SQUARE GRATE	46"
6222-60-XXX	60" SQUARE GRATE	57 3/4"



**COMPLIANCES:**



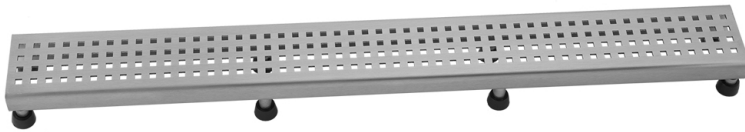
Complies with: ASME A112.18.2-2015/CSA B125.2-15

## 32" Channel Drain Square Dotted Grate

**Model #: 6222-32-**

### FEATURES:

- 304 stainless steel construction
- Nominal Size: 32"
- Key included to remove grate for easy cleaning
- Adjustable feet for perfect installation
- JACLO channel drain body sold separately
- Standard finishes: BSS & PSS. Additional finishes available: BKN, BU, EB, JG, MBK, ORB, PB, PG, SB, SDB, SG, TB, WH. Call for pricing and availability

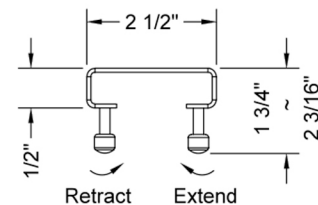
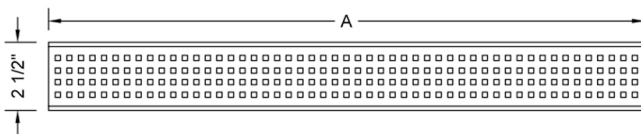


### AVAILABLE FINISHES:

Polished Stainless (PSS)    Brushed Stainless (BSS)

### SPECIFICATION DRAWING:

JACLO SQUARE GRATE ONLY		
PART. #	DESCRIPTION	A
6222-24-XXX	24" SQUARE GRATE	22 1/4"
6222-32-XXX	32" SQUARE GRATE	30 1/8"
6222-36-XXX	36" SQUARE GRATE	34 1/8"
6222-42-XXX	42" SQUARE GRATE	42"
6222-48-XXX	48" SQUARE GRATE	46"
6222-60-XXX	60" SQUARE GRATE	57 3/4"



### COMPLIANCES:

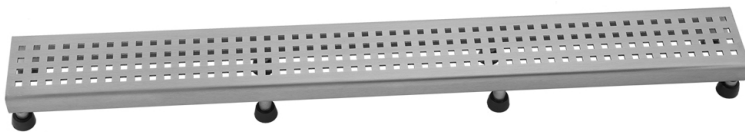


Complies with: ASME A112.18.2-2015/CSA B125.2-15

36" Channel Drain Square Dotted Grate  
Model #: 6222-36-

**FEATURES:**

- 304 stainless steel construction
- Nominal Size: 36"
- Key included to remove grate for easy cleaning
- Adjustable feet for perfect installation
- JACLO channel drain body sold separately
- Standard finishes: BSS & PSS. Additional finishes available: BKN, BU, EB, JG, MBK, ORB, PB, PG, SB, SDB, SG, TB, WH. Call for pricing and availability

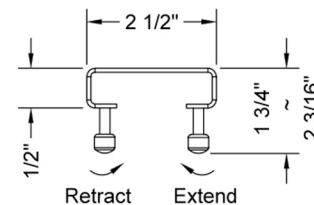
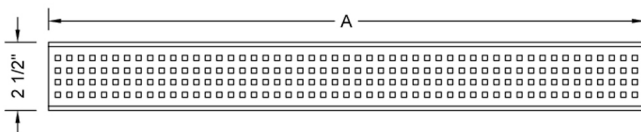


**AVAILABLE FINISHES:**

Bronze Umber (BU)      Polished Stainless (PSS)      Brushed Stainless (BSS)

**SPECIFICATION DRAWING:**

JACLO SQUARE GRATE ONLY		
PART. #	DESCRIPTION	A
6222-24-XXX	24" SQUARE GRATE	22 1/4"
6222-32-XXX	32" SQUARE GRATE	30 1/8"
6222-36-XXX	36" SQUARE GRATE	34 1/8"
6222-42-XXX	42" SQUARE GRATE	42"
6222-48-XXX	48" SQUARE GRATE	46"
6222-60-XXX	60" SQUARE GRATE	57 3/4"



**COMPLIANCES:**



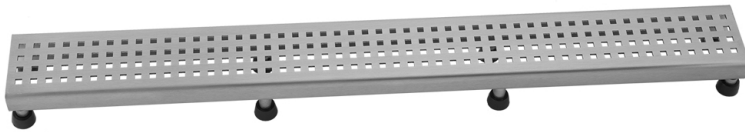
Complies with: ASME A112.18.2-2015/CSA B125.2-15

## 42" Channel Drain Square Dotted Grate

**Model #: 6222-42-**

### FEATURES:

- 304 stainless steel construction
- Nominal Size: 42"
- Key included to remove grate for easy cleaning
- Adjustable feet for perfect installation
- JACLO channel drain body sold separately
- Standard finishes: BSS & PSS. Additional finishes available: BKN, BU, EB, JG, MBK, ORB, PB, PG, SB, SDB, SG, TB, WH. Call for pricing and availability

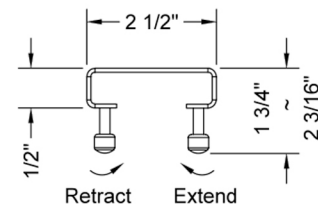
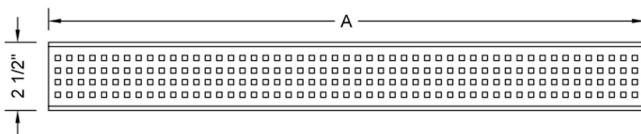


### AVAILABLE FINISHES:

Polished Stainless (PSS)    Brushed Stainless (BSS)

### SPECIFICATION DRAWING:

JACLO SQUARE GRATE ONLY		
PART. #	DESCRIPTION	A
6222-24-XXX	24" SQUARE GRATE	22 1/4"
6222-32-XXX	32" SQUARE GRATE	30 1/8"
6222-36-XXX	36" SQUARE GRATE	34 1/8"
6222-42-XXX	42" SQUARE GRATE	42"
6222-48-XXX	48" SQUARE GRATE	46"
6222-60-XXX	60" SQUARE GRATE	57 3/4"



### COMPLIANCES:



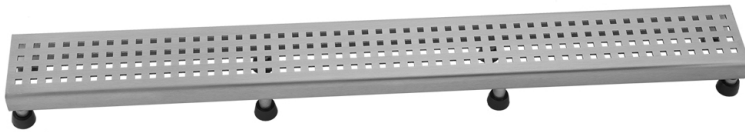
Complies with: ASME A112.18.2-2015/CSA B125.2-15

## 48" Channel Drain Square Dotted Grate

**Model #: 6222-48-**

### FEATURES:

- 304 stainless steel construction
- Nominal Size: 48"
- Key included to remove grate for easy cleaning
- Adjustable feet for perfect installation
- JACLO channel drain body sold separately
- Standard finishes: BSS & PSS. Additional finishes available: BKN, BU, EB, JG, MBK, ORB, PB, PG, SB, SDB, SG, TB, WH. Call for pricing and availability

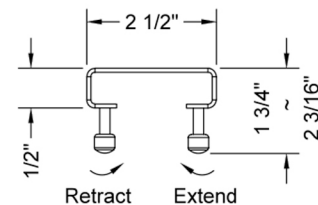
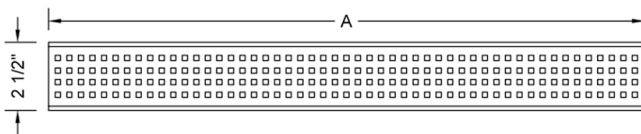


### AVAILABLE FINISHES:

Polished Stainless (PSS)    Brushed Stainless (BSS)

### SPECIFICATION DRAWING:

JACLO SQUARE GRATE ONLY		
PART. #	DESCRIPTION	A
6222-24-XXX	24" SQUARE GRATE	22 1/4"
6222-32-XXX	32" SQUARE GRATE	30 1/8"
6222-36-XXX	36" SQUARE GRATE	34 1/8"
6222-42-XXX	42" SQUARE GRATE	42"
6222-48-XXX	48" SQUARE GRATE	46"
6222-60-XXX	60" SQUARE GRATE	57 3/4"



### COMPLIANCES:

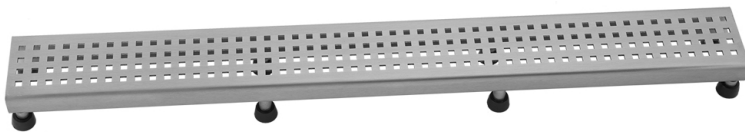


Complies with: ASME A112.18.2-2015/CSA B125.2-15

60" Channel Drain Square Dotted Grate  
Model #: 6222-60-

**FEATURES:**

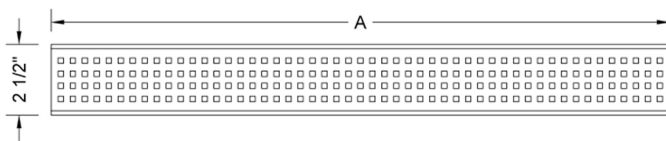
- 304 stainless steel construction
- Nominal Size: 60"
- Key included to remove grate for easy cleaning
- Adjustable feet for perfect installation
- JACLO channel drain body sold separately
- Standard finishes: BSS & PSS. Additional finishes available: BKN, BU, EB, JG, MBK, ORB, PB, PG, SB, SDB, SG, TB, WH. Call for pricing and availability



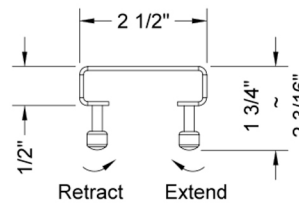
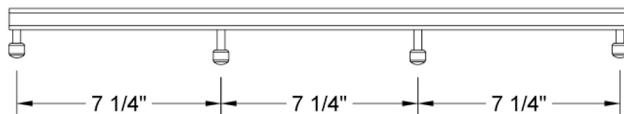
**AVAILABLE FINISHES:**

Polished Stainless (PSS)    Brushed Stainless (BSS)

**SPECIFICATION DRAWING:**



**SIDE VIEW**



JACLO SQUARE GRATE ONLY		
PART. #	DESCRIPTION	A
6222-24-BSS	24" SQUARE GRATE	22 3/16"
6222-32-BSS	32" SQUARE GRATE	30 1/8"
6222-36-BSS	36" SQUARE GRATE	34 1/16"
6222-42-BSS	42" SQUARE GRATE	42"
6222-48-BSS	48" SQUARE GRATE	45 7/8"
6222-60-BSS	60" SQUARE GRATE	57 11/16"

**COMPLIANCES:**



Complies with: ASME A112.18.2-2015/CSA B125.2-15