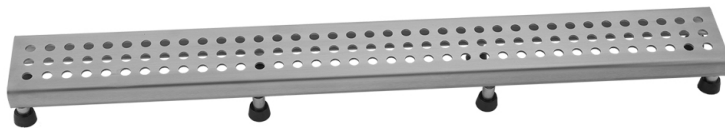


24" Channel Drain Round Dotted Grate

Model #: 6212-24-

FEATURES:

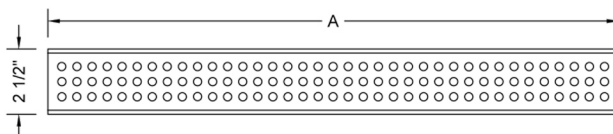
- 304 stainless steel construction
- Nominal Size: 24"
- Key included to remove grate for easy cleaning
- Adjustable feet for perfect installation
- JACLO channel drain body sold separately
- Standard finishes: BSS & PSS. Additional finishes available: BKN, BU, EB, JG, MBK, ORB, PB, PG, SB, SDB, SG, TB, WH. Call for pricing and availability



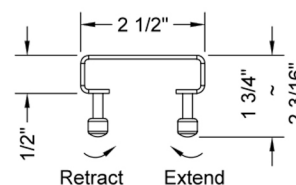
AVAILABLE FINISHES:

Polished Stainless (PSS) Brushed Stainless (BSS)

SPECIFICATION DRAWING:



JACLO DOTTED GRATE ONLY		
PART. #	DESCRIPTION	A
6212-24-XXX	DOTTED GRATE	22 1/4"
6212-32-XXX	DOTTED GRATE	30 1/8"
6212-36-XXX	DOTTED GRATE	34 1/8"
6212-42-XXX	DOTTED GRATE	42"
6212-48-XXX	DOTTED GRATE	46"
6212-60-XXX	DOTTED GRATE	57 3/4"



COMPLIANCES:

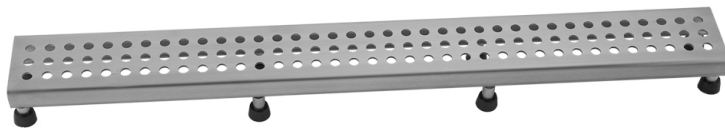
Complies with: ASME A112.18.2-2015/CSA B125.2-15

32" Channel Drain Round Dotted Grate

Model #: 6212-32-

FEATURES:

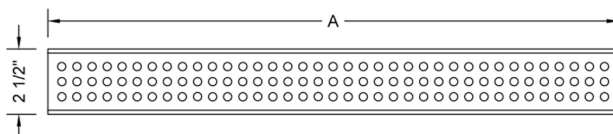
- 304 stainless steel construction
- Nominal Size: 32"
- Key included to remove grate for easy cleaning
- Adjustable feet for perfect installation
- JACLO channel drain body sold separately
- Standard finishes: BSS & PSS. Additional finishes available: BKN, BU, EB, JG, MBK, ORB, PB, PG, SB, SDB, SG, TB, WH. Call for pricing and availability



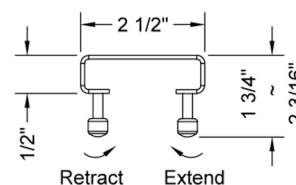
AVAILABLE FINISHES:

Polished Stainless (PSS) Brushed Stainless (BSS)

SPECIFICATION DRAWING:



JACLO DOTTED GRATE ONLY		
PART. #	DESCRIPTION	A
6212-24-XXX	DOTTED GRATE	22 1/4"
6212-32-XXX	DOTTED GRATE	30 1/8"
6212-36-XXX	DOTTED GRATE	34 1/8"
6212-42-XXX	DOTTED GRATE	42"
6212-48-XXX	DOTTED GRATE	46"
6212-60-XXX	DOTTED GRATE	57 3/4"



COMPLIANCES:

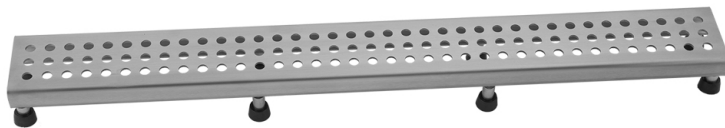
Complies with: ASME A112.18.2-2015/CSA B125.2-15

36" Channel Drain Round Dotted Grate

Model #:6212-36-

FEATURES:

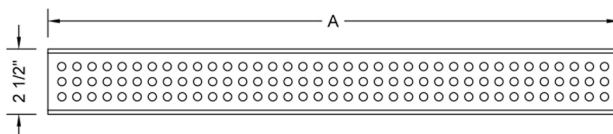
- 304 stainless steel construction
- Nominal Size: 36"
- Key included to remove grate for easy cleaning
- Adjustable feet for perfect installation
- JACLO channel drain body sold separately
- Standard finishes: BSS & PSS. Additional finishes available: BKN, BU, EB, JG, MBK, ORB, PB, PG, SB, SDB, SG, TB, WH. Call for pricing and availability



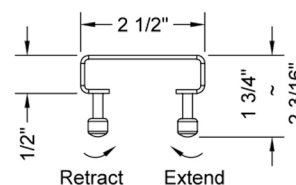
AVAILABLE FINISHES:

Polished Stainless (PSS) Brushed Stainless (BSS)

SPECIFICATION DRAWING:



JACLO DOTTED GRATE ONLY		
PART. #	DESCRIPTION	A
6212-24-XXX	DOTTED GRATE	22 1/4"
6212-32-XXX	DOTTED GRATE	30 1/8"
6212-36-XXX	DOTTED GRATE	34 1/8"
6212-42-XXX	DOTTED GRATE	42"
6212-48-XXX	DOTTED GRATE	46"
6212-60-XXX	DOTTED GRATE	57 3/4"



COMPLIANCES:

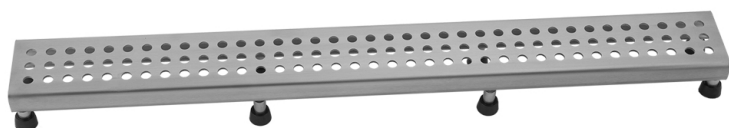
Complies with: ASME A112.18.2-2015/CSA B125.2-15

42" Channel Drain Round Dotted Grate

Model #: 6212-42-

FEATURES:

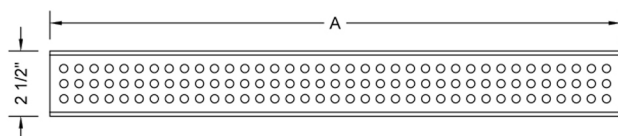
- 304 stainless steel construction
- Nominal Size: 42"
- Key included to remove grate for easy cleaning
- Adjustable feet for perfect installation
- JACLO channel drain body sold separately
- Standard finishes: BSS & PSS. Additional finishes available: BKN, BU, EB, JG, MBK, ORB, PB, PG, SB, SDB, SG, TB, WH. Call for pricing and availability



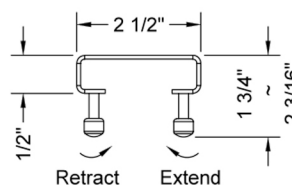
AVAILABLE FINISHES:

Polished Stainless (PSS) Brushed Stainless (BSS)

SPECIFICATION DRAWING:



JACLO DOTTED GRATE ONLY		
PART. #	DESCRIPTION	A
6212-24-XXX	DOTTED GRATE	22 1/4"
6212-32-XXX	DOTTED GRATE	30 1/8"
6212-36-XXX	DOTTED GRATE	34 1/8"
6212-42-XXX	DOTTED GRATE	42"
6212-48-XXX	DOTTED GRATE	46"
6212-60-XXX	DOTTED GRATE	57 3/4"



COMPLIANCES:

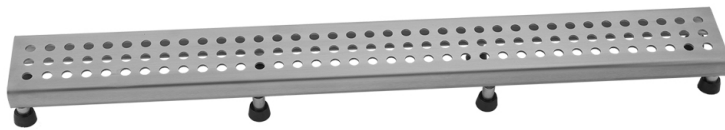
Complies with: ASME A112.18.2-2015/CSA B125.2-15

48" Channel Drain Round Dotted Grate

Model #:6212-48-

FEATURES:

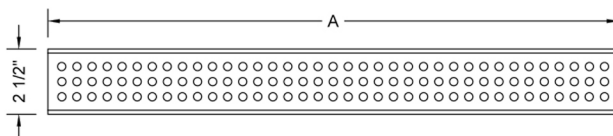
- 304 stainless steel construction
- Nominal Size: 48"
- Key included to remove grate for easy cleaning
- Adjustable feet for perfect installation
- JACLO channel drain body sold separately
- Standard finishes: BSS & PSS. Additional finishes available: BKN, BU, EB, JG, MBK, ORB, PB, PG, SB, SDB, SG, TB, WH. Call for pricing and availability



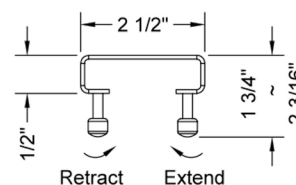
AVAILABLE FINISHES:

Polished Stainless (PSS) Brushed Stainless (BSS)

SPECIFICATION DRAWING:



JACLO DOTTED GRATE ONLY		
PART. #	DESCRIPTION	A
6212-24-XXX	DOTTED GRATE	22 1/4"
6212-32-XXX	DOTTED GRATE	30 1/8"
6212-36-XXX	DOTTED GRATE	34 1/8"
6212-42-XXX	DOTTED GRATE	42"
6212-48-XXX	DOTTED GRATE	46"
6212-60-XXX	DOTTED GRATE	57 3/4"



COMPLIANCES:

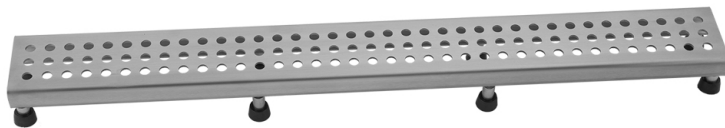
Complies with: ASME A112.18.2-2015/CSA B125.2-15

60" Channel Drain Round Dotted Grate

Model #: 6212-60-

FEATURES:

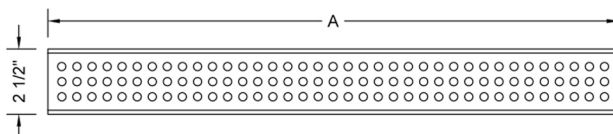
- 304 stainless steel construction
- Nominal Size: 60"
- Key included to remove grate for easy cleaning
- Adjustable feet for perfect installation
- JACLO channel drain body sold separately
- Standard finishes: BSS & PSS. Additional finishes available: BKN, BU, EB, JG, MBK, ORB, PB, PG, SB, SDB, SG, TB, WH. Call for pricing and availability



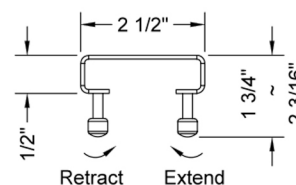
AVAILABLE FINISHES:

Polished Stainless (PSS) Brushed Stainless (BSS)

SPECIFICATION DRAWING:



JACLO DOTTED GRATE ONLY		
PART. #	DESCRIPTION	A
6212-24-XXX	DOTTED GRATE	22 1/4"
6212-32-XXX	DOTTED GRATE	30 1/8"
6212-36-XXX	DOTTED GRATE	34 1/8"
6212-42-XXX	DOTTED GRATE	42"
6212-48-XXX	DOTTED GRATE	46"
6212-60-XXX	DOTTED GRATE	57 3/4"



COMPLIANCES:

Complies with: ASME A112.18.2-2015/CSA B125.2-15