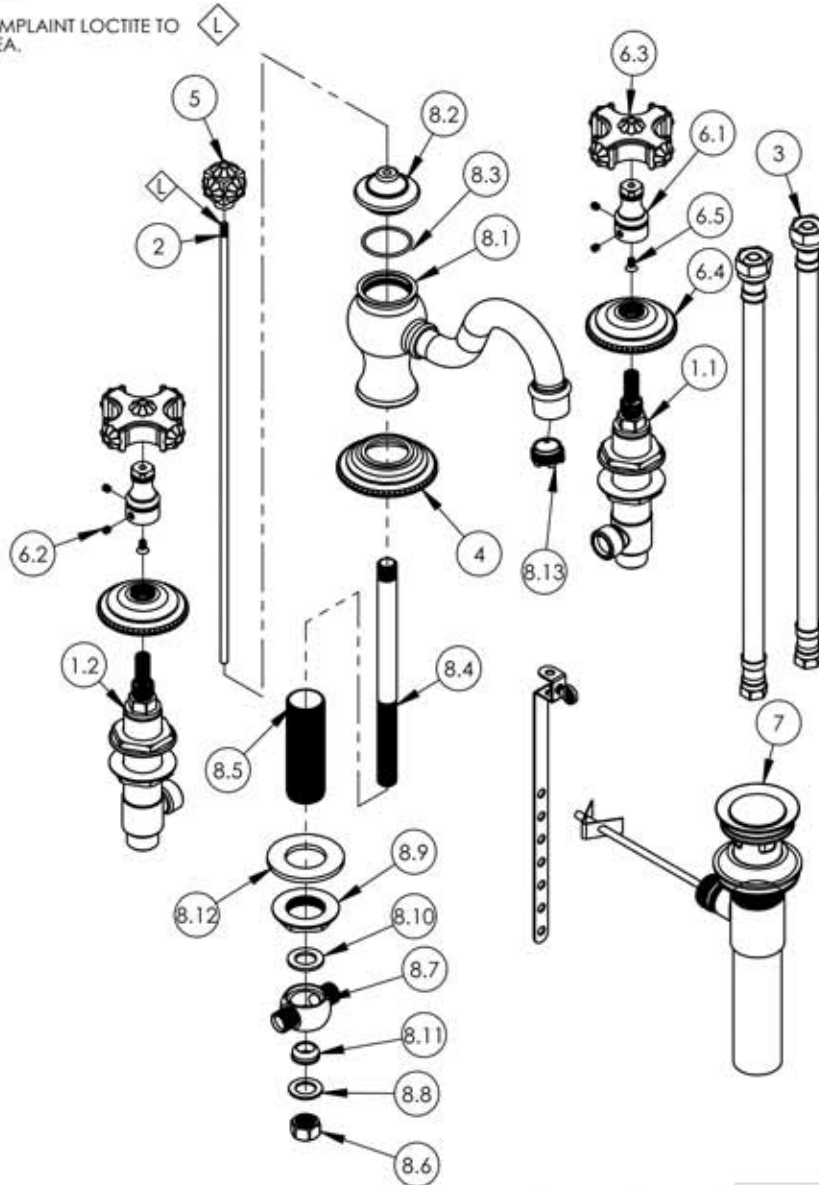


- NOTE(S):  
 1. ALL DIMENSIONS SHOWN ARE FOR REFERENCE ONLY  
 2. APPLY NSF COMPLAINT LOCTITE TO THREADED AREA.



ITEM NO.	PART NUMBER	DESCRIPTION	QTY.
1	1-600	WIDESPREAD HOT AND COLD VALVES W/PLASTIC NUTS	1
1.1	1-109	WIDESPREAD VALVE COLD LAV 16PT	1
1.2	1-110	WIDESPREAD VALVE HOT LAV 16PT	1
2	10719/00	POP-UP ROD, 10-24, 14" LONG	1
3	10982	HOSE, 3/8" COMP. X 1/2" NPSM - 12'L	2
4	11180/00	ESCUTCHEON SPOUT, COURONNE SERIES	1
5	2-115/00	SUB-ASSY. FINIAL POP-UP, MARVELLE SERIES	1
6	3-029/00	CROSS HANDLE, MARVELLE SERIES	2
6.1	10542/00	BASE HANDLE, CROSS MARVELLE	1
6.2	92008	SET SCREW, CUP POINT 8-32	2
6.3	2-114/00	SUB-ASSY. HANDLE CROSS, MARVELLE SERIES	1
6.4	10540/00	ESCUTCHEON, MARVELLE SERIES	1
6.5	92146	SCREW, FLAT HD, 8-32 x 5/16'L	1
7	3-046/00	POP-UP DRAIN ASSEMBLY (2-101, 2-102)	1
8	3-341/00	ASSY. SPOUT, WIDESPREAD	1
8.1	2-037/00	SUB-ASSY, SPOUT COURONNE/MARVELLE SERIES	1
8.2	11179/00	SPOUT CAP, COURONNE SERIES	1
8.3	90025	O-RING, 1-3/16"ID X 1/16"THK, AS-568-025	1
8.4	P33002	7" POP-UP GUIDE	1
8.5	P33008	LAV SPOUT NIPPLE	1
8.6	168B	BRASS NUT	1
8.7	2003NL	TEE VALVE FOR LAV WIDESPREAD	1
8.8	28A	BRASS WASHER	1
8.9	92037	NUT, FLANGED 1"-20 THREAD	1
8.10	92054	RUBBER WASHER, 15/16"OD X .080"THK	1
8.11	954A	CONE WASHER	1
8.12	P35317	S.S. WASHER O.D 2" I.D 1" 1/16	1
8.13	P05062	AERATOR CACHE JUNIOR COIN SLOT, 1.5GPM, M21.5X1.0	1

ALL	A	-ASSY. WAS UPDATED WITH REVISED SUB ASSY'S	12/3/2015	GRE
ZONE	REV.	DESCRIPTION	DATE	APPROVED

REVISIONS

1261 LOGAN AVENUE  
 COSTA MESA, CALIFORNIA 92626  
 PHONE: 714.361.4800  
 FAX: 714.617.3120

**PHYLORICH®**

Defining Luxury Since 1959

PROPRIETARY AND CONFIDENTIAL

THE INFORMATION CONTAINED IN THIS DRAWING IS THE SOLE PROPERTY OF RJS MANUFACTURING. ANY REPRODUCTION IN PART OR AS A WHOLE WITHOUT THE WRITTEN PERMISSION OF RJS MANUFACTURING IS PROHIBITED.

NEXT ASSY	USED ON	FRACTIONS ±1/64"	DECIMALS X.X: ±.1 X.XX: ±.01 X.XXX: ±.005	ANGULAR ±.5°
APPLICATION				
MATERIAL				
FINISH		DRAWN	LL0	12/3/2015
DO NOT SCALE DRAWING		CHECKED	GRE	

INTERPRET GEOMETRIC DIMENSIONING & TOLERANCING IN ACCORDANCE WITH ASME Y14.5-2009 & ASME Y14.41-2003 STANDARDS. UNLESS OTHERWISE SPECIFIED, DIMENSIONS ARE IN INCHES. TOLERANCES ARE:

WIDESPREAD FAUCET, MARVELLE SERIES

SIZE	ASM/PRT NO.	REV
<b>A</b>	162-01/00	A

SCALE	WEIGHT	SHEET
1:5	lbs.	1 OF 2