

WE260

ACRYLIC SHOWERS

60 x 34 x 78 inches



FEATURES

- Multiple integral toiletry shelves
- Sculpted armrests
- Slip-resistant floor
- Premium cast acrylic surface
- 5-year limited warranty



AQUATIC
The bath people



WE260

60 x 34 x 78

BASE MODEL	PKG. WT. LBS.	SEAT	DRAIN	MODEL #	MSLP
<input type="checkbox"/> Tub-shower	161	0	Left	WE260L	\$2,363
<input type="checkbox"/> Tub-shower	161	0	Right	WE260R	\$2,363



CAST ACRYLIC SHOWERS & TUB-SHOWERS

PRODUCT FEATURES

- Sculpted armrest
- Multiple toiletry shelves

For series features see section page.

OPTIONS (x = insert desired option code)	ENTER DESIRED OPTION CODE	MSLP
Cast acrylic stock color (COLxx): White (WH)	_____	No charge
Cast acrylic color upgrade (COLxx): Biscuit (BI)	_____	\$35
Cast acrylic premium color upgrade (COLUxx): Black (BK) Sterling Silver (ST)	_____	\$389
Cable drive waste & overflow: Chrome (CDCHCD)	_____	\$345
Cable drive waste & overflow, color-matched (CDxxxx): Biscuit (BICD) White (WHCD)	_____	\$390
Cable drive waste & overflow (CDxxxx): Oil Rubbed Bronze (OBBD) Polished Brass (BRCD) Brushed Nickel (SNCD)	_____	\$440
Residential delivery* (DELRD)	_____	\$205
Residential delivery with lift gate* (DELLG)	_____	\$454

*For program terms and conditions, see page iii.

SHOWER DOORS OPTIONS: Glass/Finish	
Clear/Brushed Nickel (L0516-54CLBN)	\$919
Clear/Silver (L0516-54CLSV)	\$654
Obscure/Brushed Nickel (L0516-54OBBN)	\$857
Obscure/Silver (L0516-54OBBSV)	\$434

BASE PRICE (insert MSLP of base model selected in upper table)	+ \$ _____
OPTIONS SUB TOTAL	\$ _____
ORDER TOTAL	= \$ _____

ORDERING KEY

In the part number, "xx" means an option code must be inserted.

Cast Acrylic stock color (COLxx) ← part number

option code → White (WH)

Example: COLxx + WH = COLWH
Cast Acrylic stock color in White

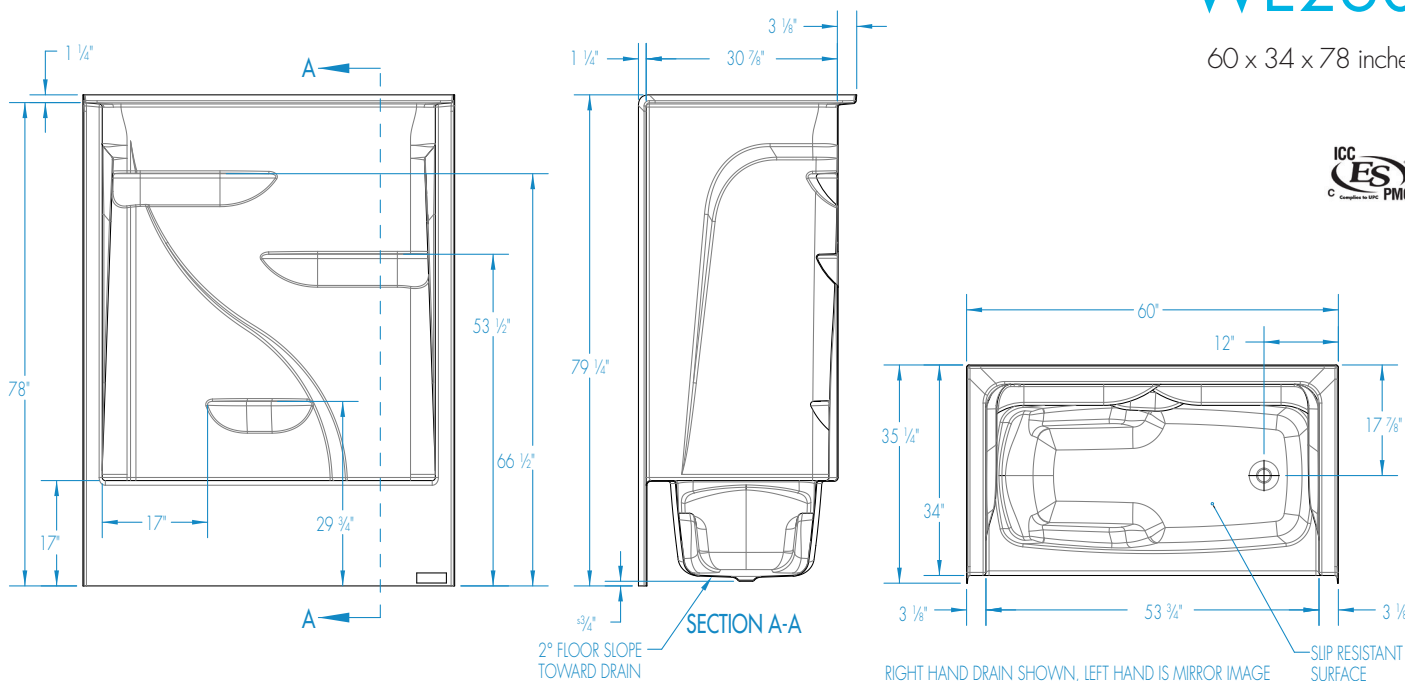
Manufacturer reserves the right to discontinue models, colors, options and trim finishes without notice.

Customer Name: _____ Date: _____

Additional Information:

WE260

60 x 34 x 78 inches



FEATURES lbs Dimensional Tolerance $\pm 3/8"$. Dimensions needed for site preparation should be measured from the unit. Aquatic assumes no responsibility for preparatory work.

Type and Model #W	Material	Wall Finish	Pieces	Drain	Seats	Lights	Pkg. Wt.
Tub-Shower #WE260L/R	Cast Acrylic	Smooth Wall	1	LH or RH	-	-	161

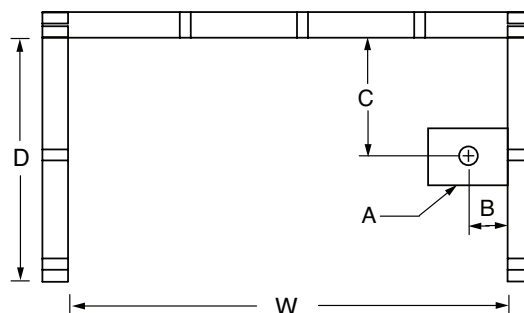
DIMENSIONS

Specifications	inches
Width: Overall / Net	60 /
Depth: Overall / Net	35 1/4 / 34
Height: Overall / Net	79 1/4 / 78
Enclosure Opening	53 3/4
Skirt Height	17
Drain Rough-In (from Back Wall)	17 7/8
Drain Rough-In (from Side Wall)	3 1/4
Drain: Diameter / Clearance	2 / 3/4

FRAMING DIMENSIONS

 inches

Type	D Depth	W Width	H Height	A Box/Out	B	C
Alcove	34	60 1/8	-	6 x 12	3 1/4	17 7/8



SUMP DATA

Top of Drain to Bottom of Overflow	Capacity to Overflow gal	Min. Operating Capacity gal	WIDTH @ centerline		DEPTH @ centerline	
			Top	Bottom	Top	Bottom
11 3/8	44.2	-	50 7/8	43 1/2	26 1/2	24