

Trip Lever Tub Drain Kit

Model #: 520-

FEATURES:

- Heavy brass strainer body with 2 hole strainer and screw
- 1½" IPS coarse thread body
- Brass trip lever faceplate with screws
- Fits Gerber, JACLO and most other manufacturers

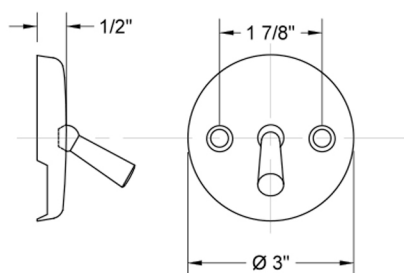


AVAILABLE FINISHES:

Polished Chrome (PCH)	Satin Chrome (SC)	Bronze Umber (BU)
Satin Nickel (SN)	Pewter (PEW)	Caramel Bronze (CB)
Polished Nickel (PN)	Antique Brass (AB)	Antique Copper (ACU)
Oil-Rubbed Bronze (ORB)	Polished Brass (PB)	Polished Copper (PCU)
Vintage Bronze (VB)	Satin Brass (SB)	Rose Gold (RG)
Matte Black (MBK)	Satin Gold (SG)	Polished Gold (PG)
Black Nickel (BKN)	Bombay Gold (BG)	Jewelers Gold (JG)
Europa Bronze (EB)	White (WH)	Sedona Beige (SDB)
Tristan Brass (TB)	Unlacquered Brass (ULB)	

SPECIFICATION DRAWING:

BRASS TRIP LEVER FACEPLATE



HEAVY BRASS STRAINER BODY

