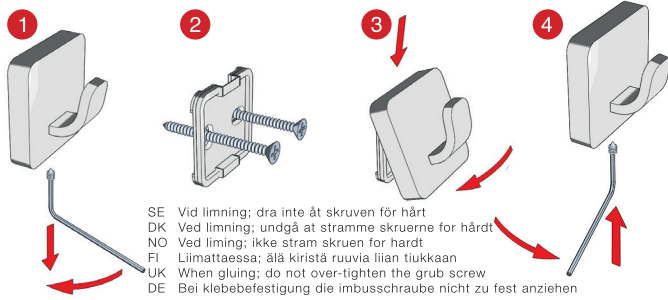


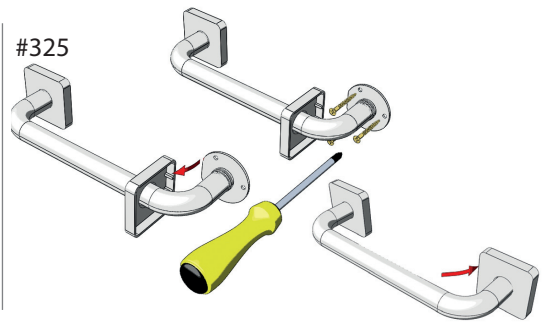
Monteringsanvisning  
 Gebrauchsanleitung  
 Fitting Instructions  
 Asennusohje  
 Instructions de montage  
 Instrukcja obsługi  
 Instrucciones de Montaje  
 Инструкция по установке.



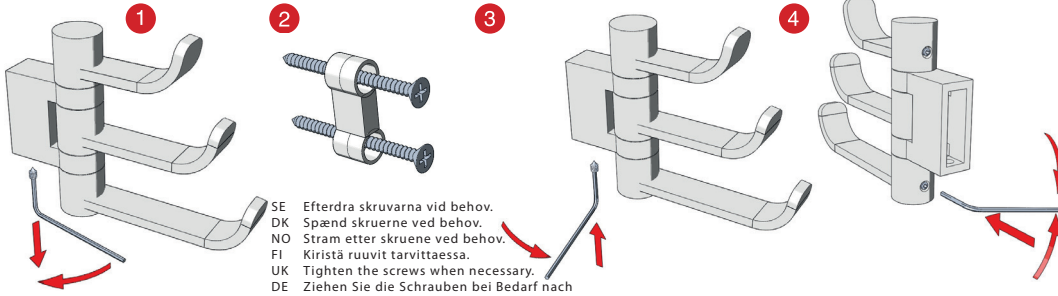
- #320 #343
- #323 #344
- #326 #3464
- #333 #355
- #341 #356
- #3414 #358
- #3411 #359
- #342 #369



SE Vid limning; dra inte åt skruven för hårt  
 DK Ved limning; undgå at stramme skruerne for hårdt  
 NO Ved liming; ikke stram skruen for hardt  
 FI Liimattaessa; älä kiristä ruuvia liian tiukkaan  
 UK When gluing; do not over-tighten the grub screw  
 DE Bei Klebefestigung die Imbusschraube nicht zu fest ziehen

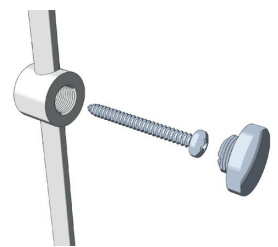


#327

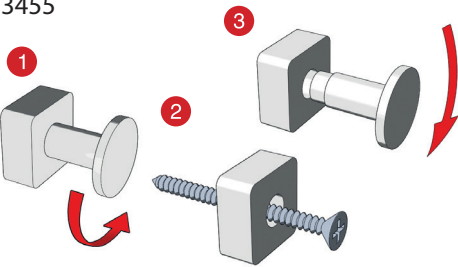


SE Eftertra skruvarna vid behov.  
 DK Spænd skruerne ved behov.  
 NO Stram etter skruene ved behov.  
 FI Kiristä ruuvit tarvittaessa.  
 UK Tighten the screws when necessary.  
 DE Ziehen Sie die Schrauben bei Bedarf nach

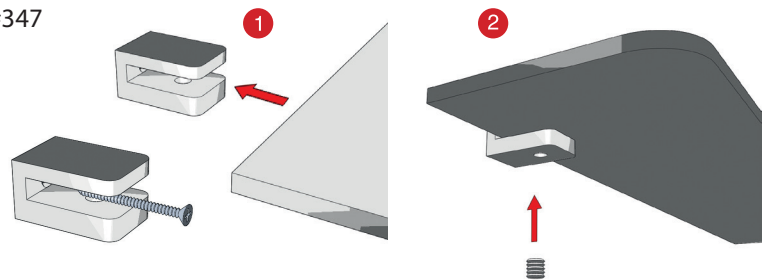
#374



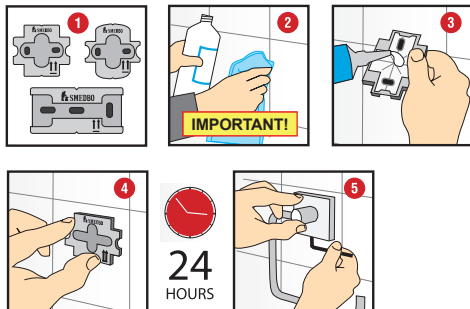
#3455



#347



#320, #323, #341, #3411, #3414, #342, #343, #344, #355, #356, #358, #359



Montering med lim  
 Assembly with glue  
 Montage mit Kleben  
 Assembly liimalla

Assemblée avec de la colle  
 Montaż za pomocą kleju  
 Montaje con pegamento  
 установка с клеем

F965 + #374

