

MONARCH™ 5' x 31" INTEGRAL APRON AIR BATH

- ☐ 1713 528 Air Bath, Right Hand Outlet
- ☐ 1713 628 Air Bath, Left Hand Outlet (Illustrated)

Product Features:

- High Gloss Acrylic with fiberglass reinforcement
- Suitable for above-floor drain installation
- Integral apron with removable access panel
- Integral headrest and double integral tiling flange
- 3-1/2" wide molded accessory ledge
- Textured tub bottom pattern
- 1 H.P. (600W) blower with integral ceramic heater
- 14 color-matched mini air jets with ball check-valve
- Jets are bottom installed with clear seating area
- Variable speed blower with electronic keypad

Actual Dimensions:

1524 x 857 x 533mm
(60" x 33-3/4" x 21")



To Be Specified - Required:

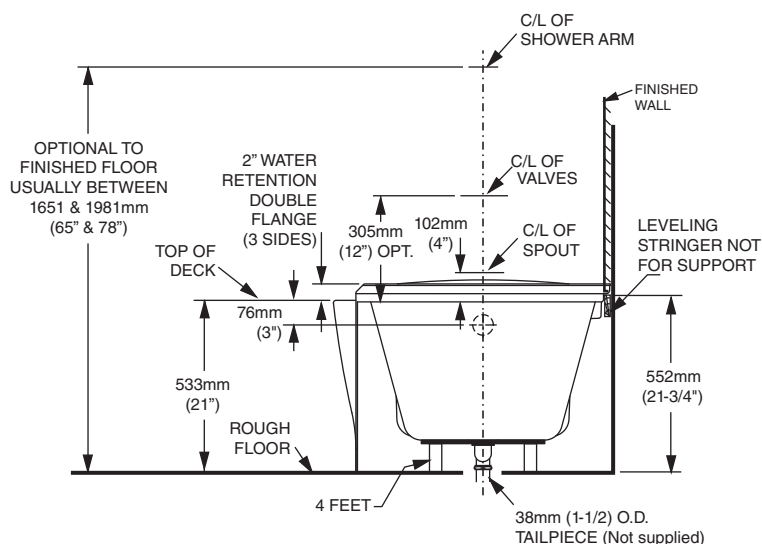
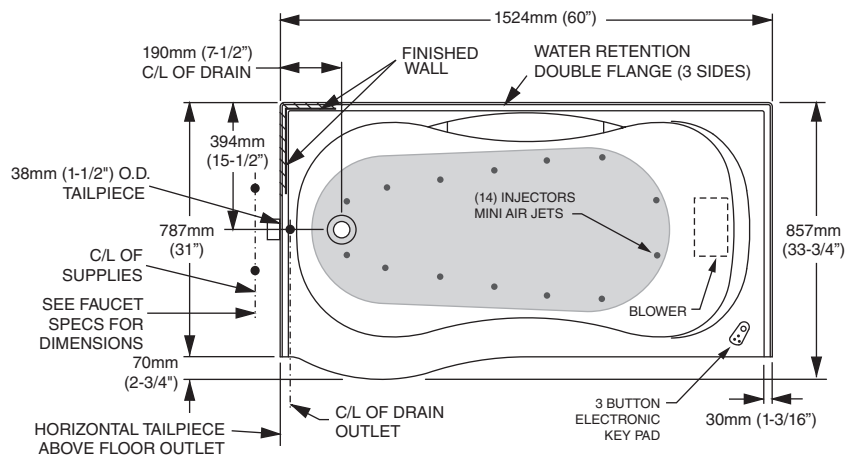
- ☐ Color: (specify color)
- ☐ Bath Faucet* (specify finish)
- ☐ Universal Drain: 1583 470 (specify finish)

* See faucet section for models available

Meets or Exceeds the Following Specifications:

- Underwriters Laboratories - Hydromassage Bathtubs UL 1795
- ASME A112.19.7M for Whirlpool Appliances
- ANSI Z124.1 for Plastic Bathtubs
- ASTM E162 for Flammability
- NFPA 258 for Smoke Density

NOTE: Roughing-in dimensions and product specifications shown on reverse side of page.



GENERAL SPECIFICATIONS FOR 1713 528/628 AIR BATH

INSTALLED SIZE	1524 x 787 x 533 mm (60 x 31 x 21 In.)
WEIGHT	78 Lbs. (35 Kg.)
WEIGHT w/WATER	505 Lbs. (229 Kg.)
GALLONS TO OVERFLOW	51 Gal. (232 L.)
MIN. OPERATING GAL.	45 Gal. (204 L.)
BATHING WELL AT SUMP	1105 x 483 mm (43-1/2 x 19 In.)
BATHING WELL AT RIM	1372 x 546 mm (54 x 21-1/2 In.)
WATER DEPTH TO OVERFLOW	324 mm (12-3/4 In.)
FLOOR LOADING	38 Lbs./Sq.Ft. (185 Kg./Sq. m)
(PROJECTED AREA)	
PTS.	16.7
CUBE (Ft ³)	33

ELECTRICAL SPECIFICATIONS

AIR SYSTEM BLOWER ____ 1 H.P. (600W) MOTOR, 9 AMPS, 120V.

* ALL DIMENSIONS MAY VARY $\pm 1/4"$ (6mm)

NOTES:

BATH CAN BE INSTALLED ABOVE FLOOR LINE AS A RECESS INSTALLATION.

LEFT HAND OUTLET SHOWN, RIGHT HAND REVERSE DIMENSIONS (1713 628). SHOWN WITH DRAIN AND OVERFLOW.

FAUCETS NOT INCLUDED AND MUST BE ORDERED SEPARATELY.

REFER TO INSTALLATION INSTRUCTIONS SUPPLIED WITH FAUCET.

PROVIDE SUITABLE REINFORCEMENT FOR ALL SUPPORTS.

CONCEALED PIPING NOT INCLUDED.

IMPORTANT:

Dimensions of fixtures are nominal and may vary within the range of tolerances established by ANSI Standard Z124.1

These measurements are subject to change or cancellation. No responsibility is assumed for use of superseded or voided leaflet.