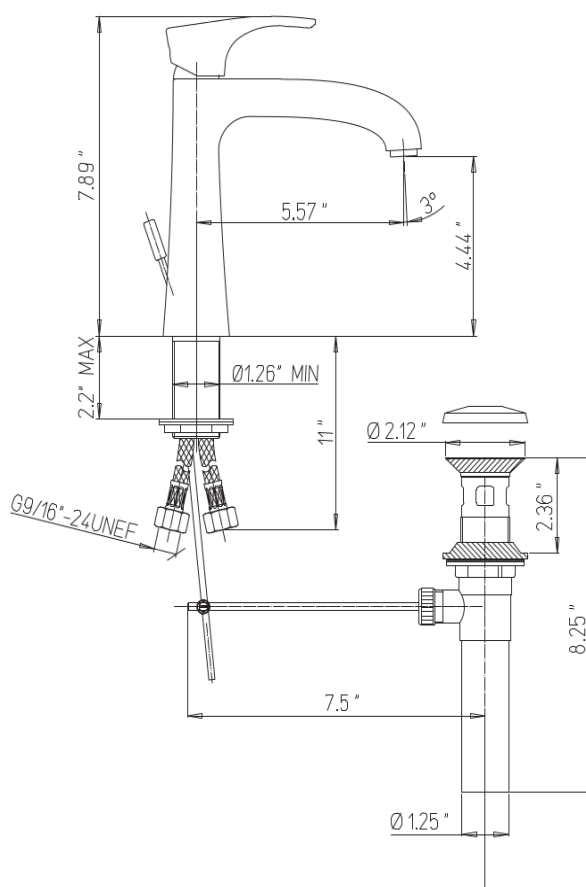


89-211



Lady single handle lavatory
faucet with lever handle



Lady Series

89-211

Lavatory Faucet

STANDARDS

- Compliant with ASME A112.18.1-B125.1
- Compliant with AB1953
- Compliant with ANSI NSF61 – Annex G
- Certified by CSA International
- Compliant with ANSI A117.1

Finishes

| | 89CR211 | 89PW211 | 89OK211 |
|-----------------|---------|---------|---------|
| Polished Chrome | X | | |
| Brushed Nickel | | X | |
| Satin Gold | | | X |

Features

| | 89CR211 | 89PW211 | 89OK211 |
|--|---------|---------|---------|
| Solid Brass Construction | X | X | X |
| Meets NSF 61/9 Annex G Lead Requirements | X | X | X |
| ADA Compliant | X | X | X |
| Step-By-Step Installation Instructions | X | X | X |
| Limited Lifetime Warranty | X | X | X |
| 1.5 GPM | X | X | X |
| Pop-Up Drain Included | X | X | X |

1-866-668-6690
1571 MAIN RD
NEWFIELD, NJ 08344

www.paini-usa.com