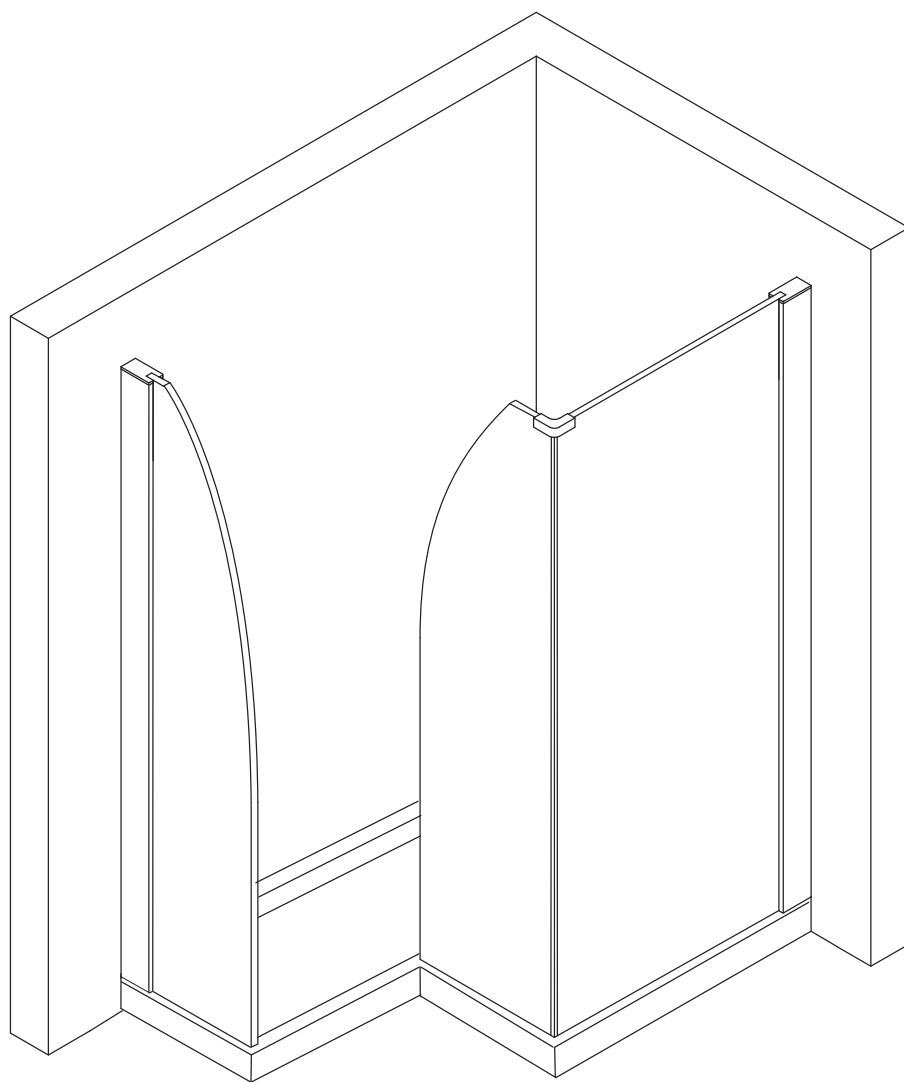




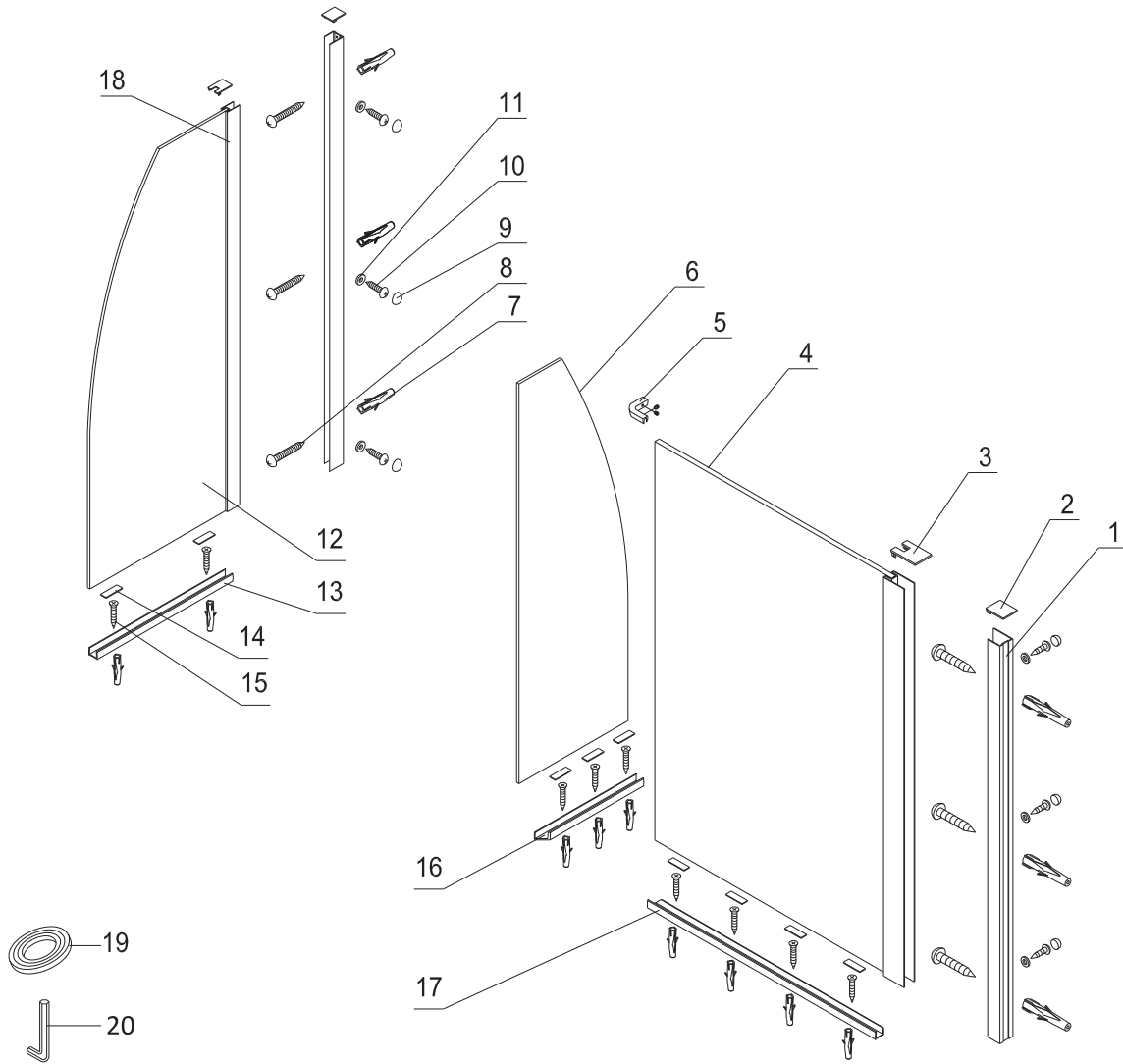
Produits Neptune

## SPACE 3 PANELS

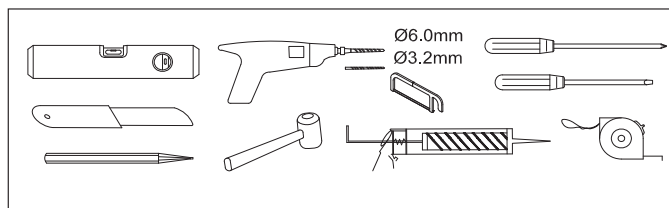
### Installation manual



# SPACE 3 PANELS

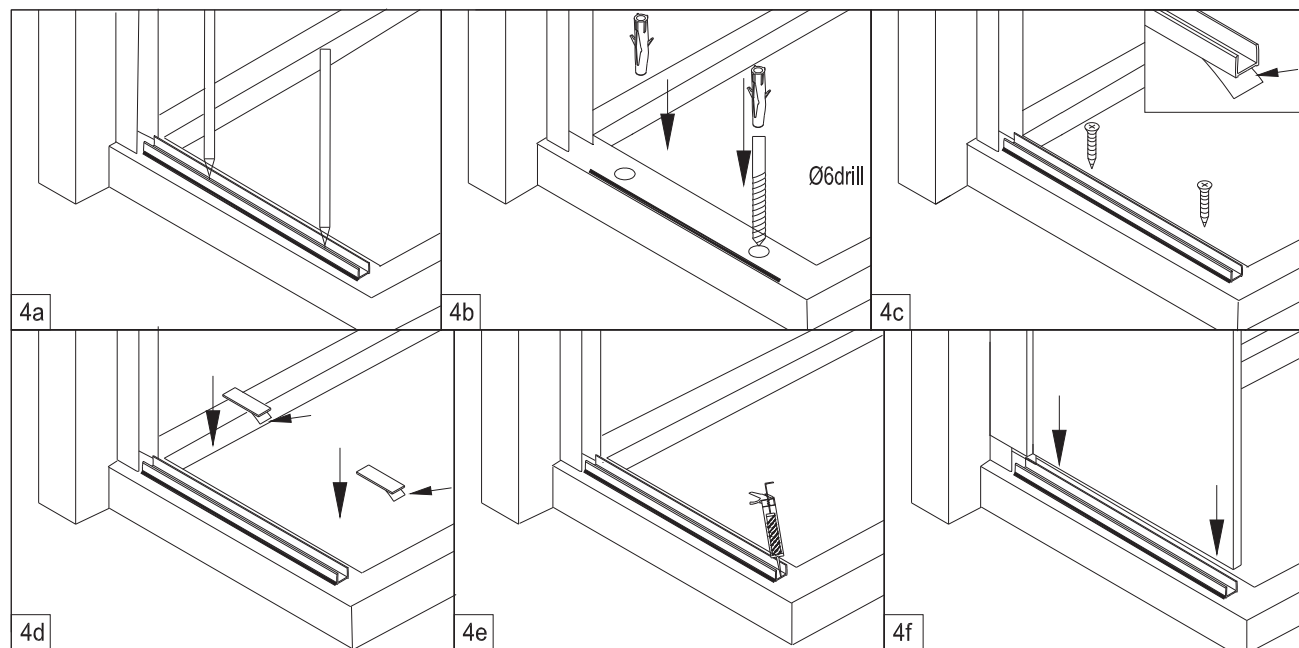
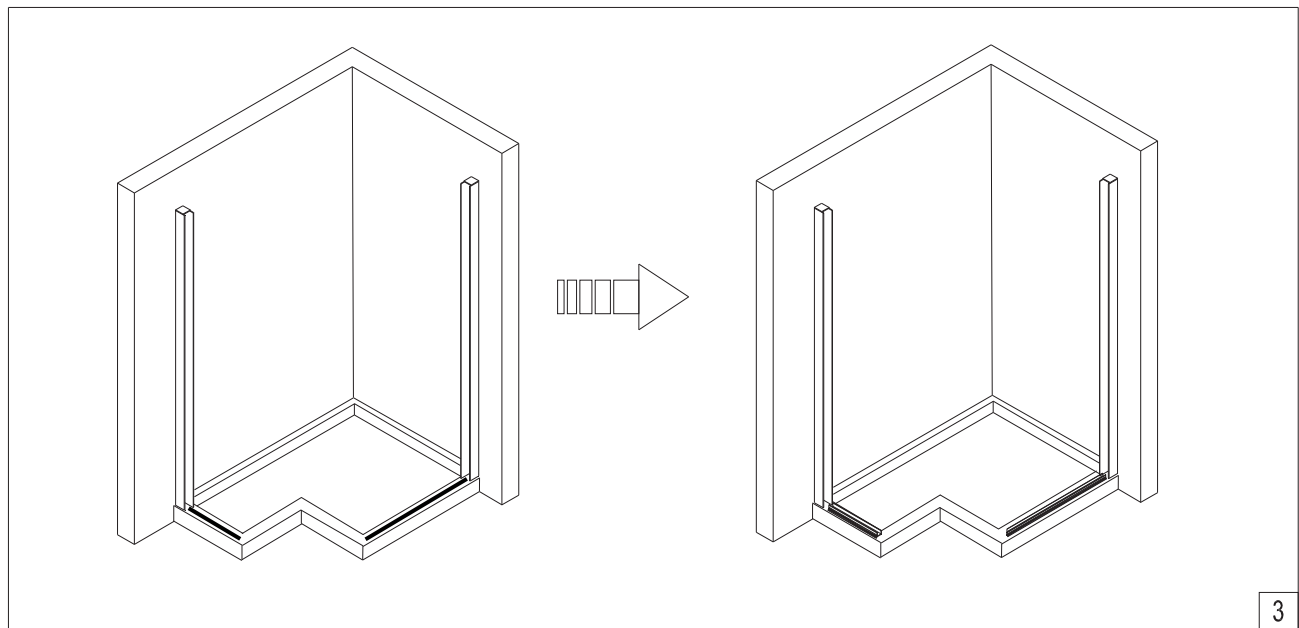
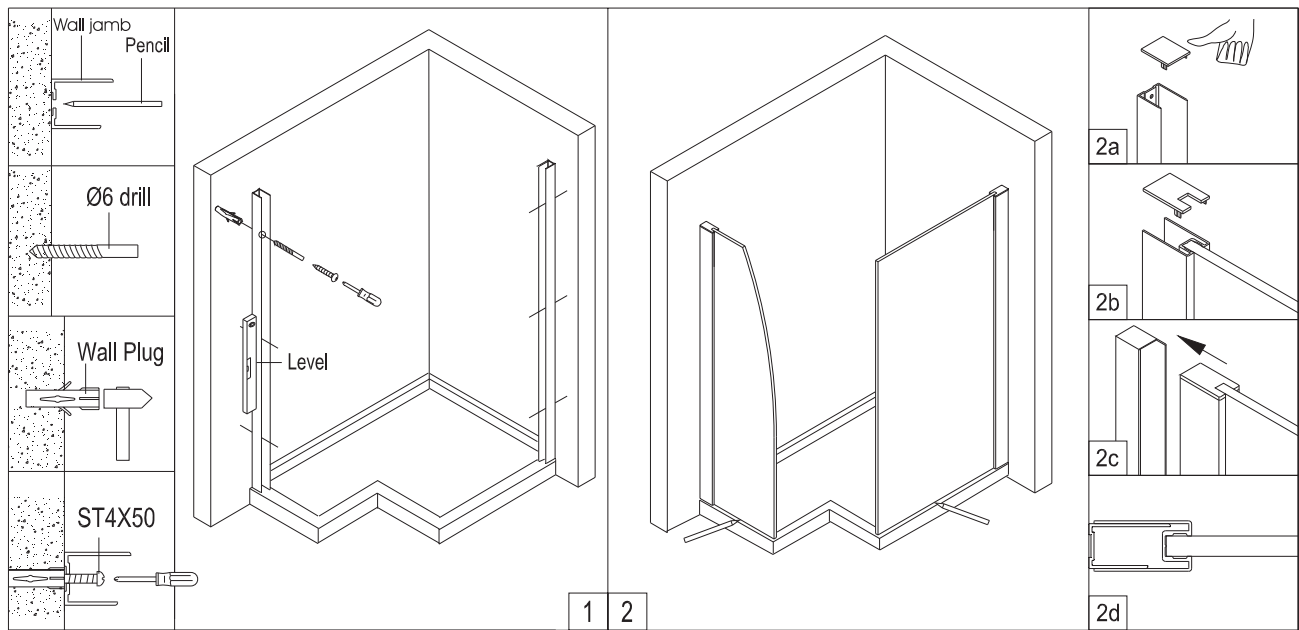


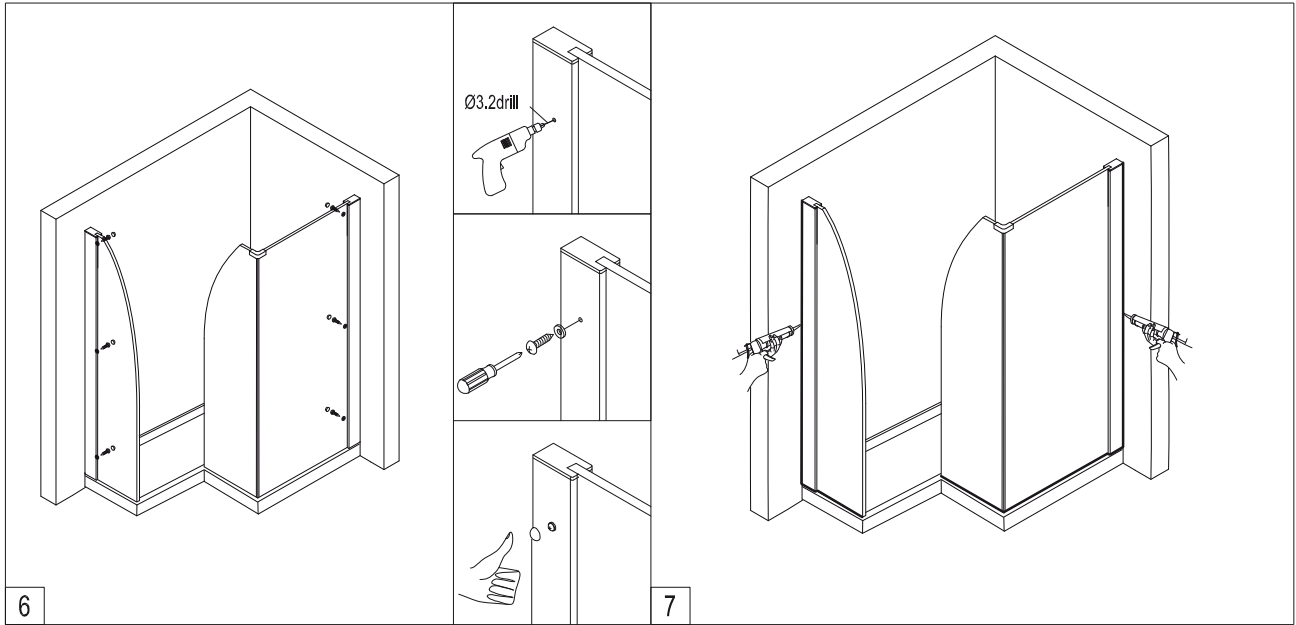
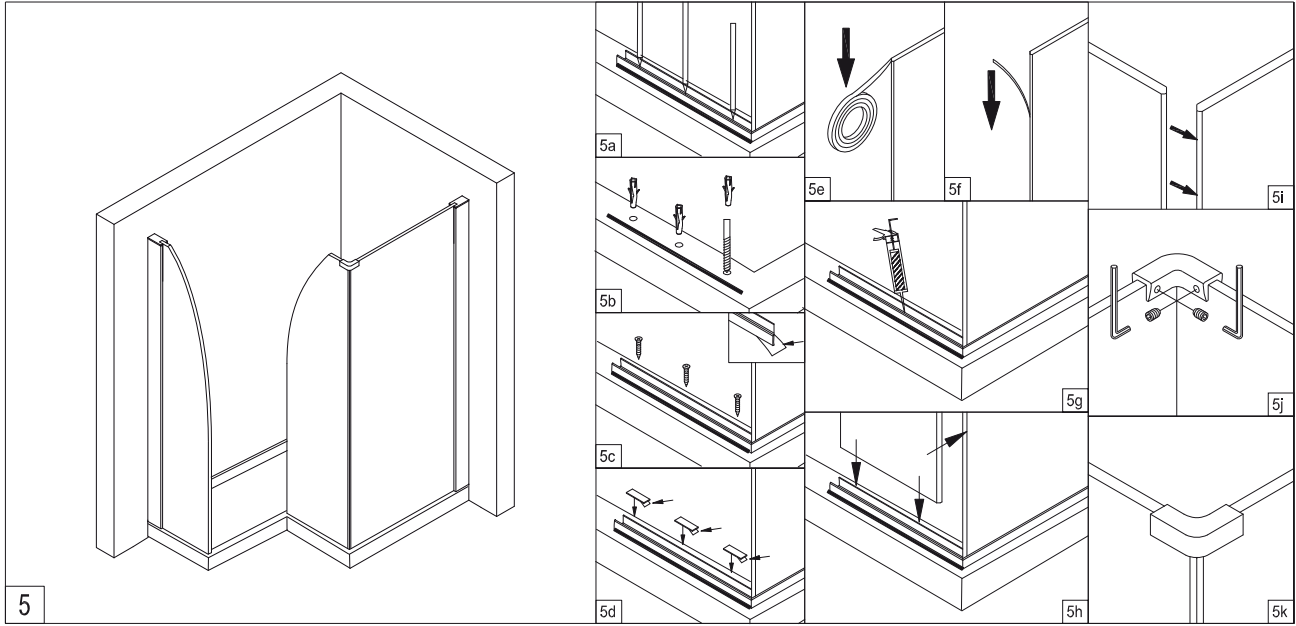
ITEM	DESCRIPTION	DIMENSION	QTY	ITEM	DESCRIPTION	DIMENSION	QTY
1	Wall jamb	73 1/4" (187.6cm)	2	11	Washer		6
2	Wall jamb cap		2	12	Rounded fixed panel		1
3	Extrusion cap		2	13	"U"Channel	20 7/8" (53cm)	1
4	Fixed return panel 45° bevel	40 1/4" (102.2cm) x 73 1/4" (187.6cm)	1	14	Protective plastic		9
5	Corner support		2	15	screw (optional)	ST3.5X25	9
6	Rounded glass panel 45° bevel	17 7/8" (45.5cm) x 73 1/4"(187.6cm)	1	16	"U"Channel	17 1/2" (44.3cm)	1
7	Wall plug		15	17	"U"Channel	40 1/2" (102.2cm)	1
8	Screw	ST4X50	6	18	Extrusion		2
9	Screw cap	ST4X12	6	19	Double sided silicone tape		1
10	Screw	ST4X12	6	20	Allen key	4mm	1



2 people









## Produits Neptune QUALITY

This logo certifies that your bathtub has been inspected and tested by our specialists and that it is compliant with our high Produits Neptune quality standards.

## CSA LISTED/ Warnock-Hersey

All our products and their components have received CSA or Warnock-Hersey certification, which attests to their quality and reliability.

## UPC

IAPMO: All our porcelain products have received UPC certification.

## WARRANTY

Each Produits Neptune product has been subjected to rigorous quality controls and we guarantee that it conforms to the highest quality standards. In order to ensure a trouble-free installation, we strongly recommend that you read the installation manual and our warranty terms joined with the product carefully before beginning any work. Our warranty covers parts and labor for repairs only and does not cover additional costs related to defective product replacement.

## BATHTUBS & SHOWERS

**ACRYLIC SHELL:** Limited lifetime warranty against manufacturing defects.

### SYSTEMS:

Limited 10-year warranty (parts and labor) against manufacturing defects; jets, pipes, fittings, electronic control pads, pumps, inline heaters, blowers, black box, remote controls, ozonator, wiring, etc. and leaks related to manufacturing defects.

Limited 5-year warranty against manufacturing defects related to colored jet trims inside the bathtub.

## OPTIONS

### BODY JETS:

Limited 2-year warranty against manufacturing defects;

Limited 10-years warranty covering leaks related to manufacturing defects.

Limited 2-year warranty against manufacturing defects related to colored jet trims inside the shower.

**VALVES:** See warranty for faucets.

### WOOD TRIM:

Limited 1-year warranty against manufacturing defects.

**GENERAL:** Mood light, Chromotherapy, Chromo +, NEPTUNER, neck pillows, handles and other options.

Limited 5-year warranty against manufacturing defects for all parts.

### METAL and FORGED IRON :

Limited 5-year warranty against manufacturing defects.

## DOORS

Limited 10-year warranty against manufacturing defects, covers parts other than gaskets, magnets & installation hardware which have a 1-year warranty against manufacturing defects.

## TOILETS

### PORCELAIN:

Limited 5-year warranty against manufacturing defects.

### PARTS:

Limited 5-year warranty against manufacturing defects for parts inside tank; Limited 1-year warranty for installation hardware.

### SEATS:

Limited 1-year warranty against manufacturing defects.

## SINKS

Limited 1-year warranty against manufacturing defects.

## FAUCETS and DRAINS

Limited lifetime warranty against manufacturing defects on all parts including cartridges.

Limited lifetime warranty for chrome finish; 5-year warranty for brushed nickel finish.

## FANS

Limited 3-year warranty against manufacturing defects, including heat lamps.

## IMPORTANT!

- If a showroom product is sold, the warranty period begins on the date of purchase from Produits Neptune by the retailer.
- For commercial use, all products have a one-year warranty against manufacturing defects.