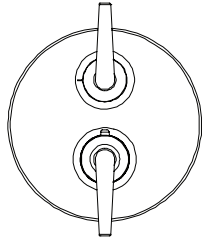
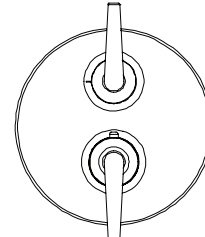


Please read the instructions completely before beginning the installation.

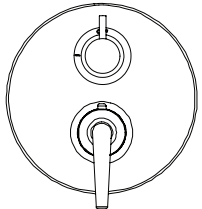
1/2" Thermostatic trim with volume control
Model Number: 7095.-TM



1/2" Thermostatic trim with volume control and 2 way diverter
Model Number: 7097.-TM
Model Number: 7096.-TM



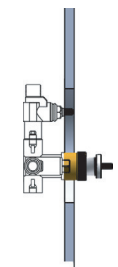
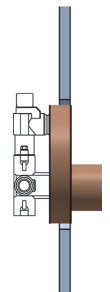
1/2" Thermostatic trim with volume control and 3 way diverter
Model Number: 7099.-TM
Model Number: 7098.-TM



INSTALLATION INSTRUCTIONS

1 - Rough in the valve, orienting the mud guard flush with the finish wall. (you can recess up to .250")

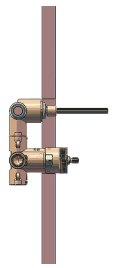
2 - Remove the plastic mud guard.



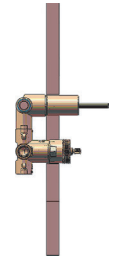
The measurements shown are for reference only. Products and specifications shown are subject to change without notice.

www.santecfaucet.com | P: 310.542.0063 F: 310.542.5681

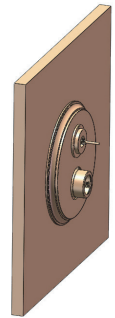
3 - Put the broach extension onto the on/off valve.



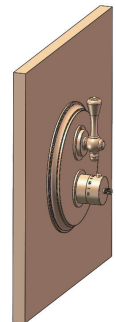
4 - Screw the all thread extension onto the on/off valve until it stops.
- Screw on the thermostatic threaded sleeve then put the thread extension onto the thermostatic stem.



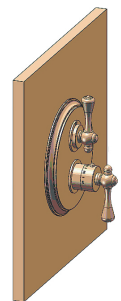
5 - Place the two holes of the plate over the valve, push back to set orientation against the wall.
- Push the diverter ring over the upper hole of the plate with the off sign on top.
- Place the On/Off handle assembly over the diverter broach extension; mark-off excess, remove the all thread extension and diverter broach extension then cut broach and thread extension length to fit.
- Replace the newly cut diverter broach extension and all thread extension back onto the valve.



6 - Replace the plate and diverter ring.
- Hand tighten the thermostatic flange to the threaded sleeve.
- Place the On/Off handle assembly onto the diverter broach extension and handtighten. Make sure lever is oriented up towards the 12'o'clock position.



7 - Put on the thermostatic dial with the 100 mark oriented upwards to the 12'o'clock position, secure with the provided long screw and cut excess length to fit.
- Assemble the thermostatic handle onto the thermostatic dial and tighten with the set screw.



The measurements shown are for reference only. Products and specifications shown are subject to change without notice.

www.santecfaucet.com | P: 310.542.0063 F: 310.542.5681

General characteristic

- Santec thermostatic valve is suitable for most waster heater systems provided it is installed correctly.
- Low pressure storage heaters are not recommended for this application.

Cartridge Cleaning

After years of use, impurities and lime scale can restrict the water flow. To clean the cartridge, please follow these instructions:

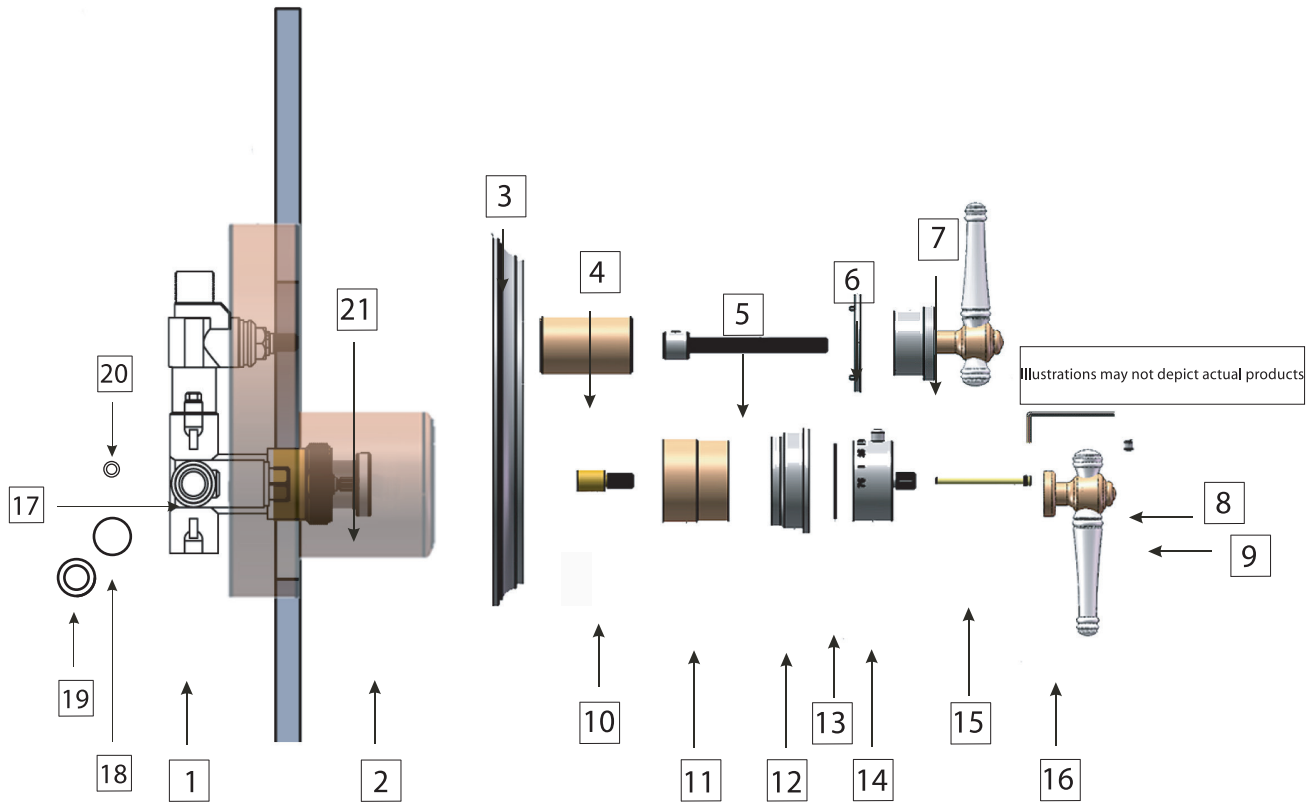
- 1- Remove the handle screw, handle trim, trim plate screws and the plate.
- 2- Shut off the waterline by turning the check valve shut off mechanism clockwise. Make sure that the both hot and cold sides are closed.
- 3- Remove the cartridge using a 30mm wrench.
- 4- Wash the filter under running water or soak it with vinegar or de-scaling agent.
- 5- Reassemble the cartridge. make sure that the blue lines on the cartridge are aligned. Recalibration of cartridges maybe necessary.
- 6- Open the check valve shut off mechanism, turn on the water and check water flow.
- 7- If the water flow is normal, reassemble the trims.

Filter Cleaning

During the installation or through the years of use, debris and impurities may clog the filters in both inlets, causing the water to be restricted or decreased considerably. Please follow these instructions to clean the filters:

- 1- Shut off the water supply.
- 2- Remove the handle screw, handle trim, trim plate screws and the plate.
- 3- Remove the check valves using a slot scrve driver. Turn counter-clockwise to screw them.
- 4- Check for debris deposited on the screw underneath the check valve.
- 5- Flush the debris with water.
- 6- Ręinstall the valves.

PARTS DRAWING



#	PART DESCRIPTION	PART #
1	Complete Thermostatic Valve	TH-8000/8200
2	Mud Guard	TH-7000-1
3	Plate	PH9711
4	All Thread Extension	PM-1179
5	Diverter Broach Extension	SA-235
6	Diverter Ring	PH9700
7	On/Off Handle Assembly	VARIABLES
8	Allen Key	PM-033
9	Set Crew	PM-027
10	Broach Extension	SA255
11	Threaded Sleeve	P00019

#	PART DESCRIPTION	PART #
12	Thermostatic Flange	P00018
13	Teflon Washer	PM-831
14	Thermostatic Dial	PH9712
15	Long Stem Screw	PM-5-4X
16	Thermostatic Handle	VARIABLES
17	Hex Screw	PM-1207
18	O-Ring	PM-1196
19	Washer	PM-306
20	Lock Washer	PM-1208
21	Temperature Restrictor	TH-7000-3

* Please specify the finish when ordering the part.

The measurements shown are for reference only. Products and specifications shown are subject to change without notice.

www.santecfaucet.com | P: 310.542.0063 F: 310.542.5681



FINISH CARE INFORMATION

WARNING: Do not clean your SANTEC product with ammonia (Window cleaner), bleach, soap, acids, abrasives, harsh polish, harsh cleaners, a coarse surfaced cloth, coarse sponge, or any type of scouring pad. Doing so may ruin your faucet finish and/or void the warranty.

Thank you for making SANTEC a part of your lifestyle and luxury spa experience. Our products have been created as works of enduring quality and sophisticated design.

Luxurious finishes need proper care and attention, so in order to understand how to properly clean your distinctive luxury finish, please refer to the finish care information below:

Your SANTEC product can be identified in one of two categories: clear coated finishes or non-clear coated finishes. Clear coated finishes are more scratch-sensitive and are more reactant to harsh cleaning chemicals than non-clear coated finishes. Once you have identified the specific luxury finish of your SANTEC product, please follow the important corresponding care instructions.

CLEAR COATED FINISHES

We recommend that all faucets, drains, etc., be gently wiped dry with a soft cloth after use to avoid water spotting and water deposit build-up. A mild liquid hand soap may be used occasionally if desired. Use of a non-abrasive carnauba wax will add protection to the finish and should be used if the faucets will not be dried after use. For clear coated finishes, it is recommended to clean your product weekly with a soft moist cloth.

NON-CLEAR COATED FINISHES

We recommend that all faucets, drains, etc., be gently wiped dry with a soft cloth after use to avoid water spotting and water deposit build-up. A mild liquid hand soap may be used occasionally if desired. Use of a non-abrasive carnauba wax is occasionally required and will add protection to the finish if the faucets will not be dried after use.

TO OBTAIN WARRANTY SERVICE

Please read 'WHAT IS COVERED BY OUR WARRANTY' and 'EXCLUSIONS AND LIMITATIONS OF WARRANTY' sections to understand what is and what is not covered. Please have ready the proof of purchase (original sales receipt), description of the problem, and carefully package the product or defective part with postage prepaid. Then, please contact your local SANTEC Showroom or write to SANTEC Technical Services.



LIFETIME LIMITED WARRANTY

SANTEC is committed to enhancing your bathroom experience by creating luxury products that will provide enduring satisfaction. Every effort has been made to satisfy the highest standards of design and production, to create lasting peace of mind for our customers. We provide the following limited warranties on our products:

LENGTH OF WARRANTY & WHO IS COVERED BY OUR WARRANTY

This warranty extends to the original consumer purchaser only and extends for as long as the original purchaser owns the product and the home in which the product is installed.

WHAT IS COVERED BY OUR WARRANTY

1. **FINISHES:** SANTEC Polished Chrome, Polished Nickel and Satin Nickel finishes carry a Lifetime Limited warranty against manufacturing defects and tarnish to the original purchaser. All other finishes carry a ten (10) year limited warranty against manufacturing defects and tarnish to the original purchaser only.
2. **CARTRIDGES:** Santec cartridges carry a lifetime limited warranty, with the exception of thermostatic and pressure balanced cartridges, which carry a three (3) year limited warranty against manufacturing defects to the original purchaser.
3. **PARTS:** Santec parts carry a 10-year limited warranty against manufacturing defects, to the original purchaser.

EXCLUSIONS & LIMITATIONS OF WARRANTY

This warranty does not cover:

1. Damage due to negligence, accident, abuse, improper installation, or improper maintenance such as, but not limited to: heat from soldering during installation, the use of plumber's putty, damage from tools used during installation, the use or exposure to chemicals or cleaning products either abrasive or non-abrasive, or the use of any cleaning tool or product other than a soft, clean cloth. Reverse osmosis may also shorten the life of the finish.
2. Changes in the finish or in the product due to normal wear or aging does not cover any products or parts which have been altered or used in a manner not typical for the product.
3. Loss, damages, or expense, incidental or consequential whatsoever, originating from the purchase, installation, use, repair, failure, or replacement of any SANTEC product or part, allowed by law.
4. Commercial and/or Industrial installations and use of the product.
5. This warranty does not include labor, travel charges, or any costs incurred for repair, removal, installation, servicing, diagnosing, or handling of either defective or replacement parts.
6. Damage or deterioration caused by environmental impacts.

SANTEC reserves the product components of the covered product will be repaired, refinished, or replaced at the sole discretion of SANTEC. SANTEC reserves the right to examine any product claimed defective prior to any warranty claim being accepted or processed, at its sole discretion. This warranty gives you specific legal rights and you may have other rights which may vary from state to state.

The measurements shown are for reference only. Products and specifications shown are subject to change without notice.

www.santecfaucet.com | P: 310.542.0063 F: 310.542.5681