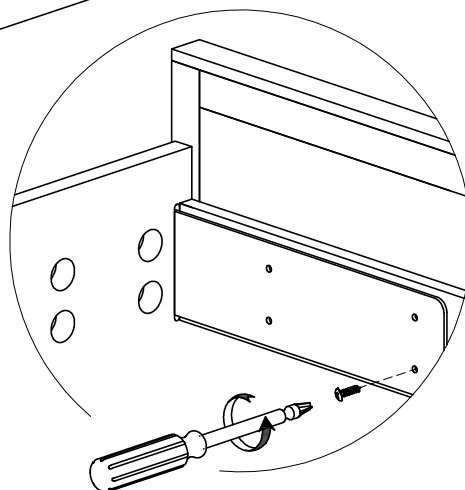
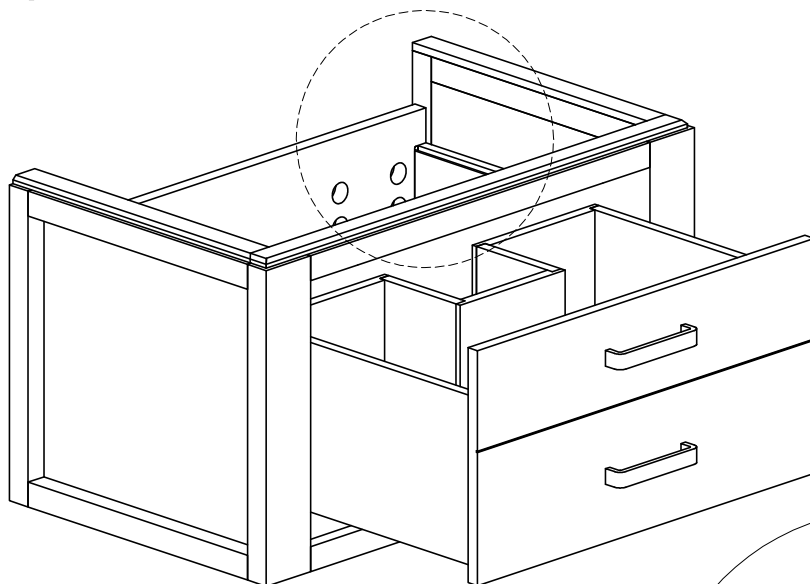




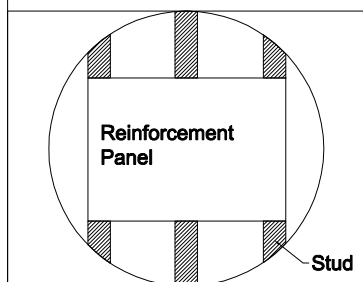
**FAIRMONT**  
designs®

**1530-WV3618**

**Step 1** Pull out drawer. Detach mounting brackets from vanity


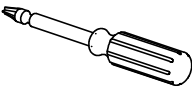
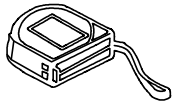





**Cut opening in wall**



**Reinforcement Panel**

- \* Large enough to cover 2 studs
- \* Not provided by manufacturer

PARTS INCLUDED				TOOLS AND MATERIALS		
1		50*50x50 mm	2 PCS			
2		Ø4x40 mm	10 PCS			
3		Ø4x20 mm	2 PCS			
				Screwdriver	Tape measure	Pencil

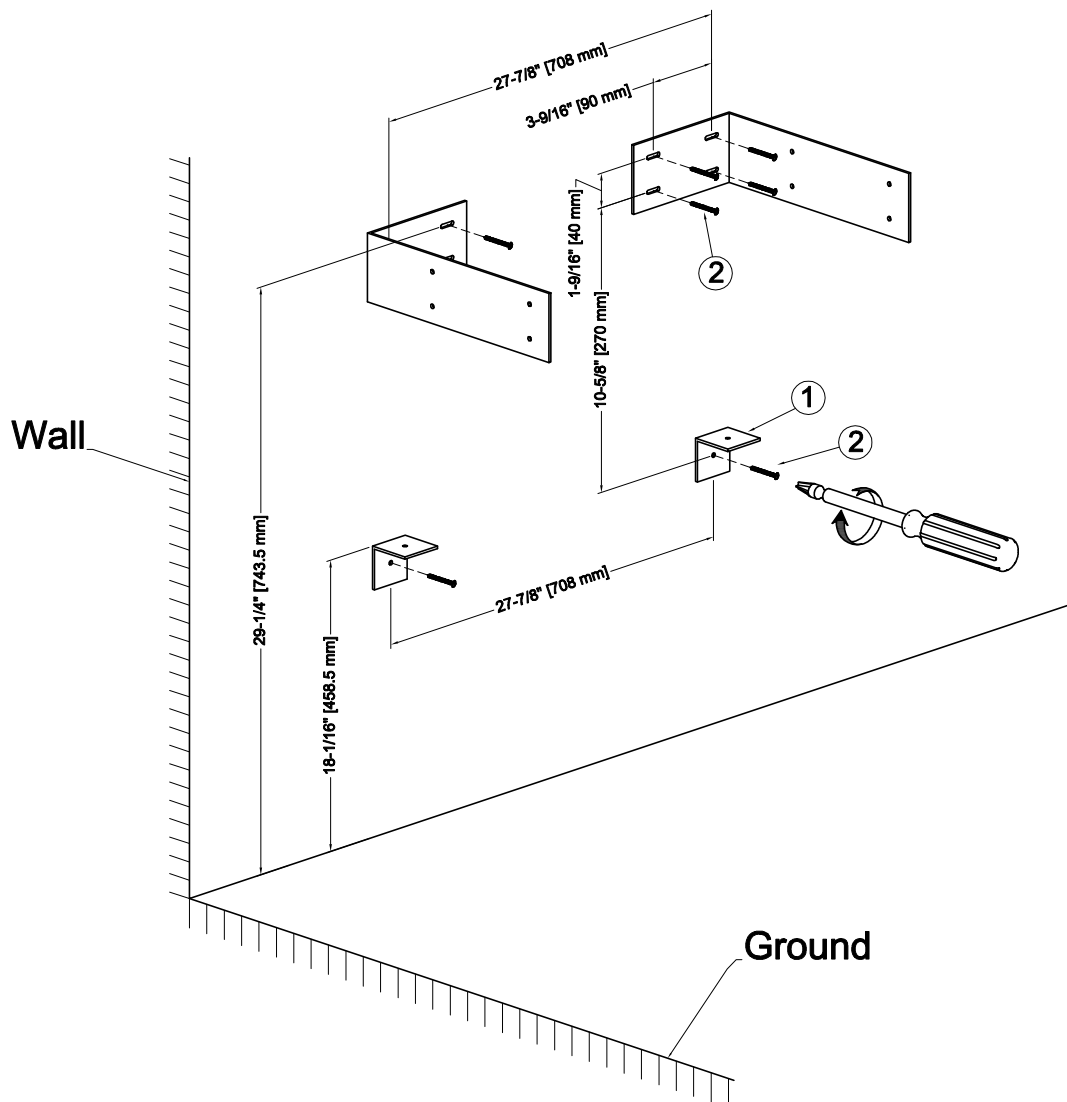
Fairmont Designs highly recommends that you seek a professional installation specialist if you are unsure of installation. Please note: Fairmont Designs is not responsible for any installation error, damages, or injuries, actual or consequential, resulting from possible printing error in instructions.



**FAIRMONT**  
designs®

**1530-WV3618**

## Step 2 Mounting brackets must be attached to reinforcement panel



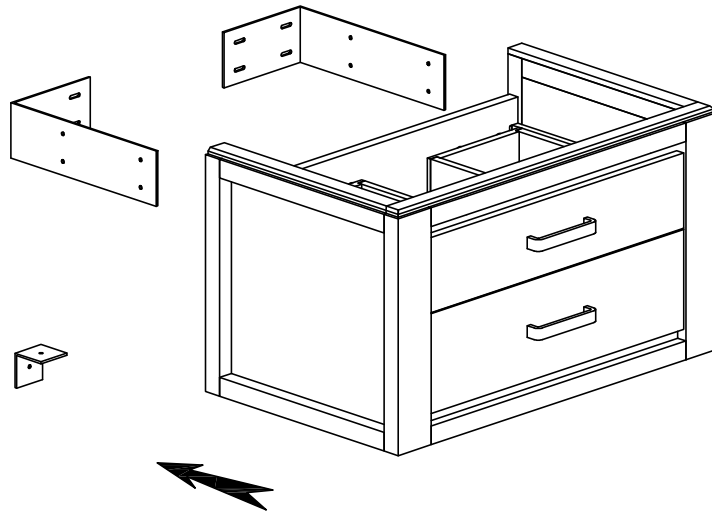
Fairmont Designs highly recommends that you seek a professional installation specialist if you are unsure of installation. Please note: Fairmont Designs is not responsible for any installation error, damages, or injuries, actual or consequential, resulting from possible printing error in instructions.



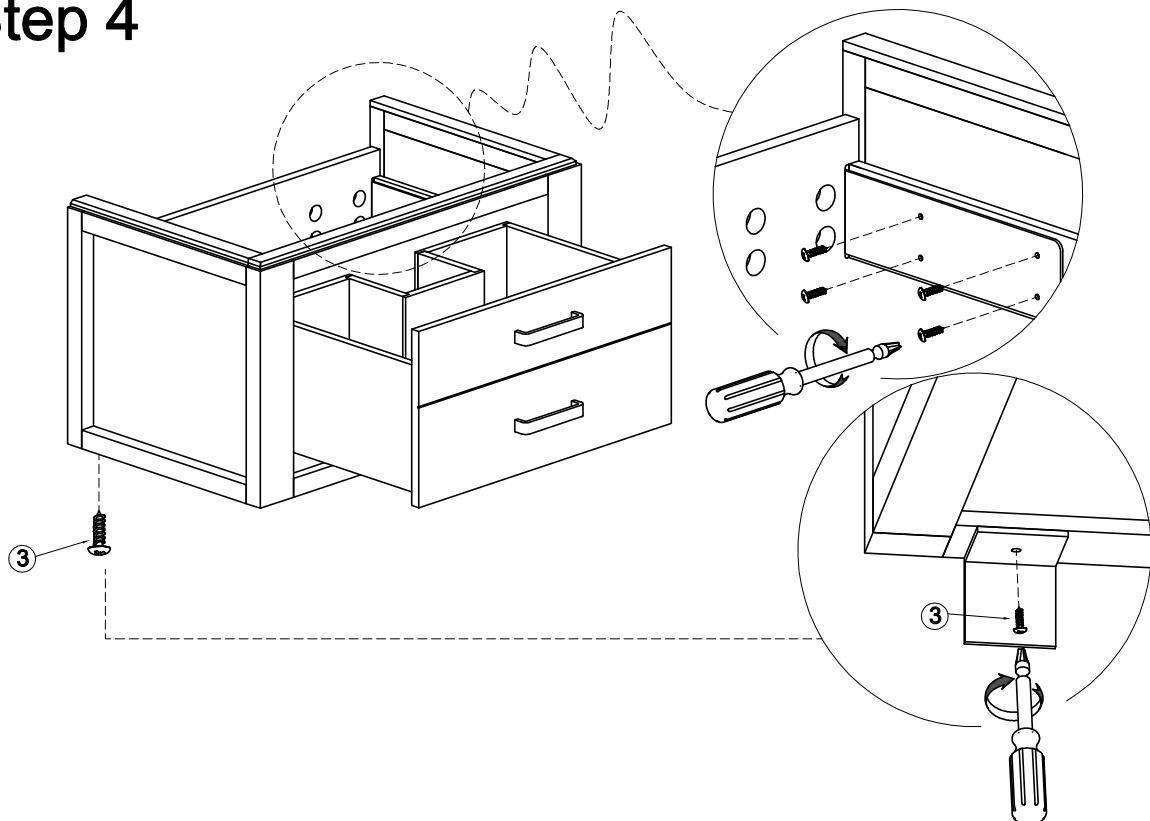
**FAIRMONT**  
designs®

**1530-WV3618**

## Step 3



## Step 4



Fairmont Designs highly recommends that you seek a professional installation specialist if you are unsure of installation. Please note: Fairmont Designs is not responsible for any installation error, damages, or injuries, actual or consequential, resulting from possible printing error in instructions.