

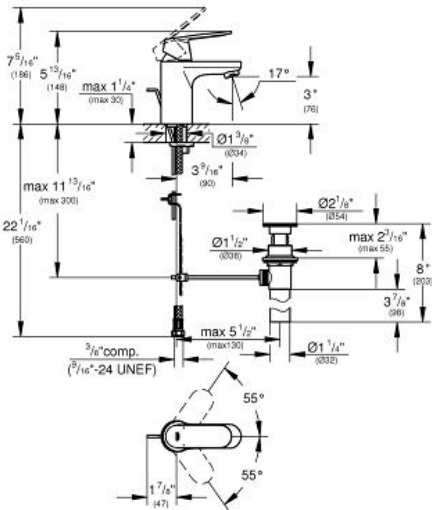
EUROSMART COSMOPOLITAN Lavatory Centerset S-Size

MODEL # 3287500A

Pure Freude an Wasser



GROHE America, Inc | 200 North Gary Avenue, Suite G, Roselle, IL 60172
Phone: +1 (800) 444-7643 | Fax: +1 (800) 225-2778 | us-customerservice@grohe.com



Product Description: Lavatory Centerset S-Size

Standard Specification:

- Single hole installation
- **GROHE SilkMove** 35 mm ceramic cartridge
- **GROHE StarLight** finish
- Adjustable flow rate limiter
- Flow control
- 1 1/4" pop-up waste set
- Stainless steel flex lines
- **GROHE QuickFix** installation system with centering support
- Max flow rate: 1.2 gpm (4.56 L/min)

Color:

□ 3287500A 00A chrome

