

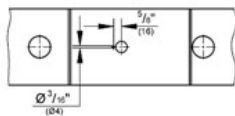
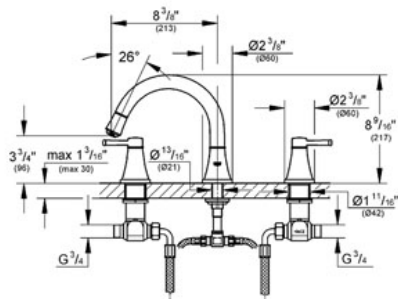
# GRANDERA Roman Tub Filler

MODEL # 25154

Pure Freude an Wasser



GROHE America, Inc | 200 North Gary Avenue, Suite G, Roselle, IL 60172  
Phone: +1 (800) 444-7643 | Fax: +1 (800) 225-2778 | us-customerservice@grohe.com



## ADA

**Product Description:**  
Roman Tub Filler

**Standard Specification:**

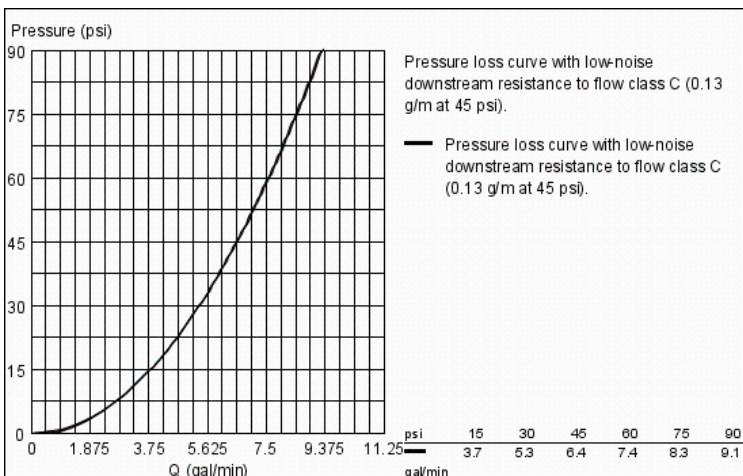
- GROHE StarLight® finish
- 3/4" ceramic cartridges (90° turn)
- Solid Brass construction
- Pressure resistant flexible connection hoses

**Applicable Codes & Standards:**

- Energy Policy Act of 1992
- ASME A112.18.1/CSA B125.1
- ICC/ANSI A117.1

**Color:**

- 25154 000 chrome
- 25154 EN0 Brushed Nickel

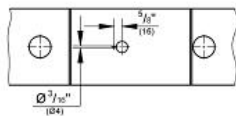
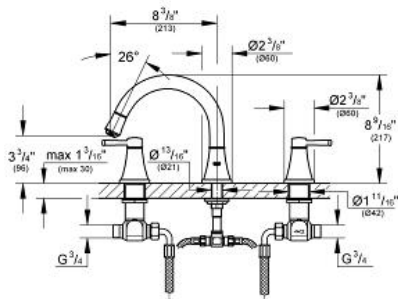


GRANDERA  
Roman Tub Filler  
MODEL # 25154EN0

Pure Freude an Wasser



GROHE America, Inc | 200 North Gary Avenue, Suite G, Roselle, IL 60172  
Phone: +1 (800) 444-7643 | Fax: +1 (800) 225-2778 | us-customerservice@grohe.com



**Product Description:**  
Roman Tub Filler

- Standard Specification:**
- 1/2" ceramic cartridge (90° turn)
  - GROHE StarLight finish
  - Spout with flow control

- Applicable Codes & Standards:**
- Energy Policy Act of 1992
  - ASME A112.18.1/CSA B125.1
  - ICC/ANSI A117.1

- Color:**
- 25154EN0 EN0 brushed nickel

