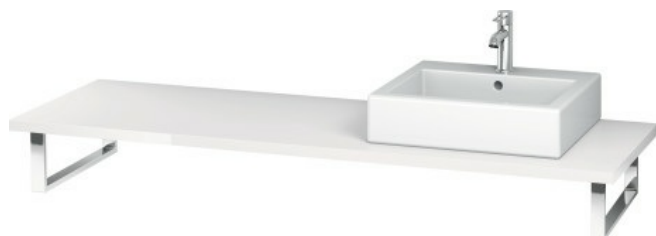


Vero Console for above-counter basin and vanity basin # VE096C

| < 21 5/8" Inch > |



Console for above-counter basin and vanity basin	Dimension	Weight	Order number
1 console with one cut-out, Width min. see ordering information, Width max. 78 3/4", price per section of 3 7/8", basic price until 31 1/2"			
Colors			
M03 Jade High Gloss Lacquer M10 Apricot Pearl High Gloss Lacquer M12 Brushed Oak (Real wood veneer) M13 American Walnut (Real wood veneer) M14 Terra (Decor) M18 White Matt M20 VSG Picto White M22 White High Gloss (Decor) M27 White Lilac High Gloss Lacquer M31 Pine Silver (Decor) M38 Dolomiti Grey High Gloss Lacquer M40 Black High Gloss Lacquer M43 Basalt Matt (Decor) M47 Stone Blue High Gloss Lacquer M49 Graphite Matt (Decor) M51 Pine Terra (Decor) M52 European Oak (Decor) M53 Chestnut Dark (Decor) M61 Olive Brown High Gloss Lacquer M69 Brushed Walnut (Real wood veneer) M71 Mediterranean Oak (Real wood veneer) M72 Brushed Dark Oak (Real wood veneer) M73 Ticino Cherry Tree (Decor) M79 Natural Walnut (Decor) M85 White High Gloss Lacquer M86 Cappuccino High Gloss Lacquer M87 White Lilac Satin Matt Lacquer M89 Flannel Grey High Gloss Lacquer M90 Flannel Grey Satin Matt Lacquer			
Variant			
	21 5/8" Inch		VE096C
Infobox			
Console may be ordered without cut-out, must specify when ordering			
Suitable products			
Console support 1 console support-bracket, for installation beneath console 18 7/8" or 21 5/8" in depth, Grey, powder-coated, 1 5/8" x 16 3/4" Inch	1 5/8" x 16 3/4" Inch		UV9902
Console support 1 console support-towel rail, for installation beneath console 21 5/8" in depth, Chrome, 1 5/8" x 18 7/8" Inch	1 5/8" x 18 7/8" Inch		UV9903
Console support 3 7/8" wall installation 1 console support (depth without pin), for installation beneath console 18 7/8" or 21 5/8" in depth, Grey, powder-coated, 3 1/2" x 16 1/2" Inch	3 1/2" x 16 1/2" Inch		UV9926

Vero Console for above-counter basin and vanity basin # VE096C

|< 21 5/8" Inch >|

Towel rail for installation on the side of console 21 5/8" in
depth, Chrome, 3 1/8" x 21 5/8" Inch

3 1/8" x 21 5/8" Inch

UV9960

All drawings contain the necessary measurements which are subject to standard tolerances. They are stated in inch & mm and are non-binding. Exact measurements, in particular for customized installation scenarios, can only be taken from the finished ceramic piece.