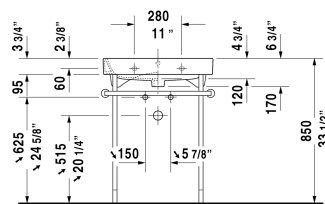
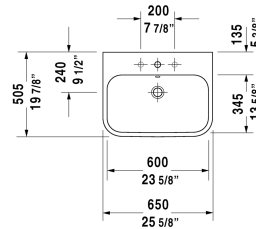
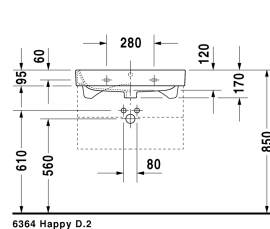


**Happy D.2 Furniture washbasin # 2318650000 / 2318650087**

| &lt; 25 5/8" Inch &gt; |

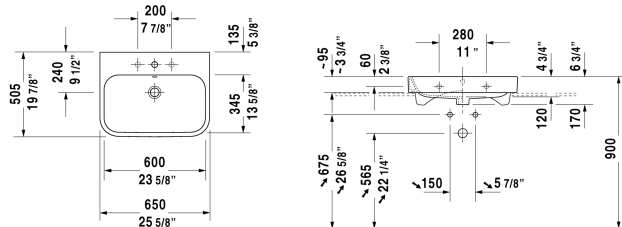


Furniture washbasin	Dimension	Weight	Order number
with overflow, with tap platform, overflow clip Chrome included, hardware included, wall-mounted, cUPC listed, 25 5/8" Inch			
<b>Colors</b>			
00 White			
<b>Variant</b>			
●	25 5/8" x 19 7/8" Inch	46.3 lb	2318650000
●●● Tap holes 1 3/8"	25 5/8" x 19 7/8" Inch	46.3 lb	2318650087
Sanitary ceramics with the special WonderGliss surface finish will remain clean and attractive-looking for a long time to come. When ordering WonderGliss please add a "1" as eleventh digit to the model number.			
Space-saving siphon	1 1/4" Inch	0.9 lb	005076
<b>Suitable products</b>			
Vanity unit wall-mounted 2 drawers, upper drawer including cut-out for siphon and siphon cover, for Happy D.2 # 231865 (not ground), 24 5/8" x 18 7/8" Inch	24 5/8" x 18 7/8" Inch		H26364
Metal console height adjustable +2", Chrome, for washbasin # 231865,			003078
Vanity unit floorstanding 2 drawers, upper drawer including cut-out for siphon and siphon cover, for Happy D.2 # 231865 (not ground), 24 5/8" x 18 7/8" Inch	24 5/8" x 18 7/8" Inch		H26372

All drawings contain the necessary measurements which are subject to standard tolerances. They are stated in inch & mm and are non-binding. Exact measurements, in particular for customized installation scenarios, can only be taken from the finished ceramic piece.

**Happy D.2 Furniture washbasin ground # 2318650025 / 2318650027**

| < 25 5/8" Inch > |



Furniture washbasin ground	Dimension	Weight	Order number
with overflow, with tap platform, overflow clip Chrome included, hardware included, wall-mounted, cUPC listed, 25 5/8" Inch			
<b>Colors</b>			
00 White			
<b>Variant</b>			
● ● ●	25 5/8" x 19 7/8" Inch	46.3 lb	2318650025
●	25 5/8" x 19 7/8" Inch	46.3 lb	2318650027
Sanitary ceramics with the special WonderGliss surface finish will remain clean and attractive-looking for a long time to come. When ordering WonderGliss please add a "1" as eleventh digit to the model number.			
<b>Suitable products</b>			
Vanity unit for console 1 pull-out compartment, compartment consists of glass dividers and 2 boxes (small/large), 31 1/2" x 21 31 1/2" x 21 1/2" Inch 1/2" Inch			XL6713
Vanity unit for console 1 pull-out compartment, compartment consists of glass dividers and 2 boxes (small/large), 39 3/8" x 21 1/2" Inch	39 3/8" x 21 1/2" Inch		XL6715
Vanity unit for console 2 drawers, upper drawer including cut-out for siphon and siphon cover, 39 3/8" x 21 1/2" Inch	39 3/8" x 21 1/2" Inch		XL6716
Vanity unit for console 2 drawers, upper drawer including cut-out for siphon and siphon cover, 31 1/2" x 21 5/8" Inch	31 1/2" x 21 5/8" Inch		H26301
Vanity unit for console 2 drawers, upper drawer including cut-out for siphon and siphon cover, 39 3/8" x 21 5/8" Inch	39 3/8" x 21 5/8" Inch		H26302
Vanity unit for console 1 pull-out compartment, 32 1/4" x 21 1/2" Inch	32 1/4" x 21 1/2" Inch		LC6828
Vanity unit for console 1 pull-out compartment, 40 1/8" x 21 1/2" Inch	40 1/8" x 21 1/2" Inch		LC6829
Vanity unit for console with 2 drawers, upper drawer including cut-out for siphon and siphon cover, 32 1/4" x 21 1/2" Inch	32 1/4" x 21 1/2" Inch		LC6838

**Happy D.2 Furniture washbasin ground # 2318650025 / 2318650027**

|< 25 5/8" Inch >|

Vanity unit for console with 2 drawers, upper drawer including cut-out for siphon and siphon cover, 40 1/8" x 21 1/2" Inch	40 1/8" x 21 1/2" Inch	LC6839
Console for above-counter basin and vanity basin 1 console with one cut-out, Width min. see ordering information, Width max. 78 3/4", price per section of 3 7/8", basic price until 31 1/2", 21 5/8" Inch	21 5/8" Inch	LC096C
Console for above-counter basin and vanity basin 1 console with two cut-outs, Width min. see ordering information, Width max. 78 3/4", price per section of 3 7/8", basic price until 31 1/2", 21 5/8" Inch	21 5/8" Inch	LC097C

*All drawings contain the necessary measurements which are subject to standard tolerances. They are stated in inch & mm and are non-binding. Exact measurements, in particular for customized installation scenarios, can only be taken from the finished ceramic piece.*