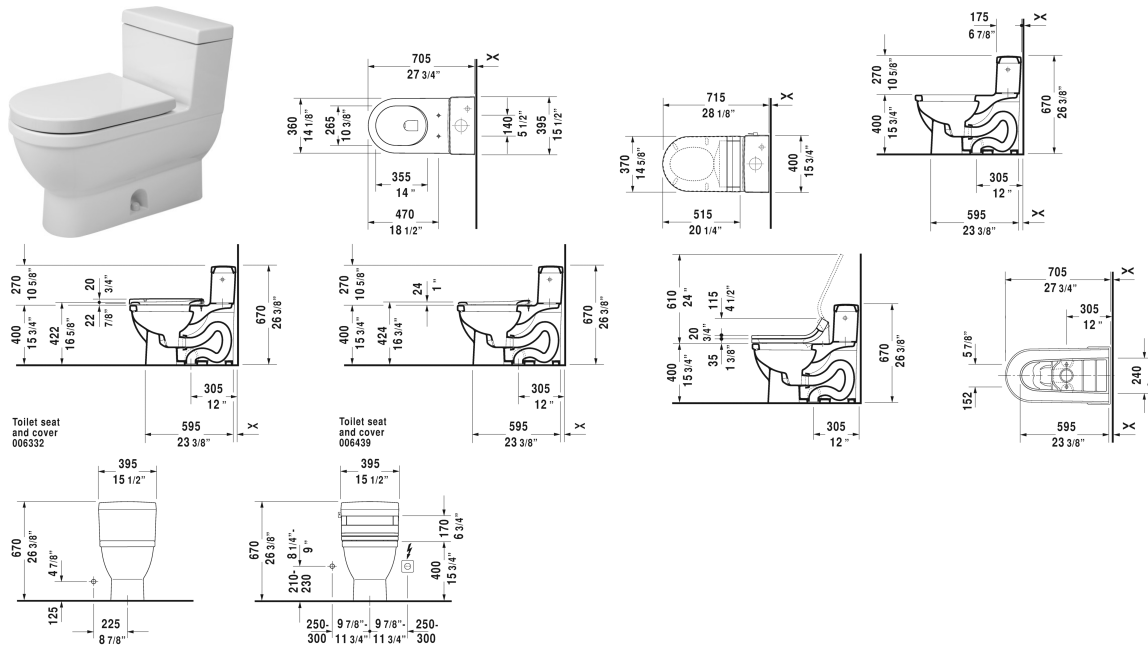


**Starck 3 One-Piece toilet # 212001..01**

**< 14 5/8" Inch >**



One-Piece toilet	Dimension	Weight	Order number
US-version toilet, suitable for SensoWash Starck, syphonic, 12" rough-in, with Single Flush mechanism, with side lever, 3" flapper valve, vertical outlet, cUPC listed, 1.28 gpf			
<b>Colors</b>			
00 White 20 HygieneGlaze (an antibacterial ceramic glaze that provides almost indefinite effectiveness)			
<b>Variant</b>			
●	14 5/8" x 28 1/8" Inch	114.9 lb	212001..01
Mounting set for One-piece and Two-piece toilets, 1/2", US-version		1.1 lb	001417
<b>Suitable products</b>			
Toilet seat and cover elongated, hinges stainless steel, removable, with slow close,			006339
SensoWash Starck shower-toilet seat remote control included, power actuated lid and seat, rear-, front and oscillating wash, individual adjustment of water-, air- and seat surface temperature as well as nozzle position and jet strength, self-cleaning wand, 2 individually programmable user profiles, night light, Quick release: easy seat unit removal and attachment, on / off-button, cIAPMO®ELECTRICAL, 14 5/8" x 20 1/4" Inch	14 5/8" x 20 1/4" Inch		610000

**Starck 3 One-Piece toilet # 212001..01**

|&lt; 14 5/8" Inch &gt;|

Toilet seat ring elongated, open front, hinges plastic, without slow close,	006431
Toilet seat ring elongated, open front, hinges plastic, with slow close,	006439
Toilet seat and cover elongated, hinges stainless steel, without slow close,	006332

*All drawings contain the necessary measurements which are subject to standard tolerances. They are stated in inch & mm and are non-binding. Exact measurements, in particular for customized installation scenarios, can only be taken from the finished ceramic piece.*