

Accessory Mounting Bracket

15607AZT (Textured Architectural Bronze)

Project Name: _____
Location: _____
Type: _____
Qty: _____
Comments: _____



Ordering Information

| | |
|--------------------|-------------------------------|
| Product ID | 15607AZT |
| Finish | Textured Architectural Bronze |
| Available Finishes | AZT, BBR, BKT, WHT |

Specifications

| | |
|-------------------|-----------------------|
| Material | Aluminum |
| Glass Description | Tree Mounting Bracket |

Qualifications

| | |
|--------------|--|
| Safety Rated | Not Required |
| Warranty | www.kichler.com/warranty |

Primary Lamping

| | |
|---------------|--------------|
| Lamp Included | Not Included |
|---------------|--------------|

Notes:

- 1) Information provided is subject to change without notice. All values are design or typical values when measured under laboratory conditions.
- 2) Incandescent Equivalent: The incandescent equivalent as presented is an approximate number and is for reference only.

Accessory Mounting Bracket

15607BBR (Bronzed Brass)

Project Name: _____
Location: _____
Type: _____
Qty: _____
Comments: _____



Ordering Information

| | |
|--------------------|--------------------|
| Product ID | 15607BBR |
| Finish | Bronzed Brass |
| Available Finishes | AZT, BBR, BKT, WHT |

Specifications

| | |
|-------------------|-----------------------|
| Material | Brass |
| Glass Description | TREE MOUNTING BRACKET |

Qualifications

| | |
|--------------|--|
| Safety Rated | Not Required |
| Warranty | www.kichler.com/warranty |

Primary Lamping

| | |
|---------------|--------------|
| Lamp Included | Not Included |
|---------------|--------------|

Dimensions

| | |
|--------|-------|
| Height | 1.50" |
| Length | 2.50" |
| Width | 1.50" |

Notes:

- 1) Information provided is subject to change without notice. All values are design or typical values when measured under laboratory conditions.
- 2) Incandescent Equivalent: The incandescent equivalent as presented is an approximate number and is for reference only.

Accessory Mounting Bracket

15607BKT (Textured Black)

Project Name: _____

Location: _____

Type: _____

Qty: _____

Comments: _____



Ordering Information

| | |
|--------------------|--------------------|
| Product ID | 15607BKT |
| Finish | Textured Black |
| Available Finishes | AZT, BBR, BKT, WHT |

Specifications

| | |
|-------------------|-----------------------|
| Material | Aluminum |
| Glass Description | Tree Mounting Bracket |

Qualifications

| | |
|--------------|--|
| Safety Rated | Not Required |
| Warranty | www.kichler.com/warranty |

Primary Lamping

| | |
|---------------|--------------|
| Lamp Included | Not Included |
|---------------|--------------|

Notes:

1) Information provided is subject to change without notice. All values are design or typical values when measured under laboratory conditions.

2) Incandescent Equivalent: The incandescent equivalent as presented is an approximate number and is for reference only.

Surface Mounting Bracket WHT

15607WHT (Textured White)

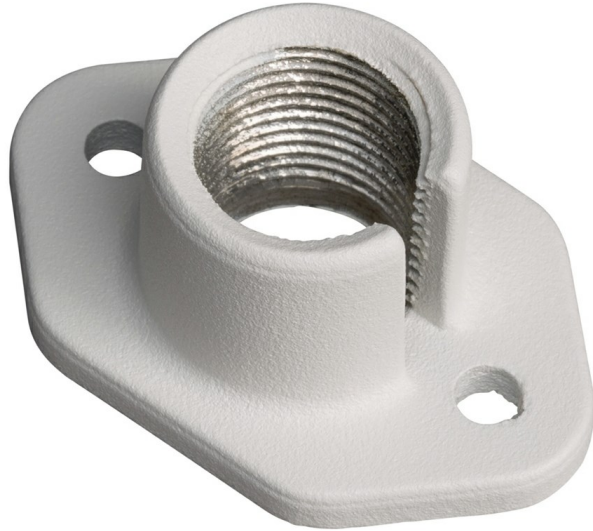
Project Name: _____

Location: _____

Type: _____

Qty: _____

Comments: _____



Ordering Information

| | |
|--------------------|--------------------|
| Product ID | 15607WHT |
| Finish | Textured White |
| Available Finishes | AZT, BBR, BKT, WHT |

Specifications

| | |
|-------------------|-----------------------|
| Material | Aluminum |
| Glass Description | TREE MOUNTING BRACKET |

Qualifications

| | |
|--------------|--|
| Safety Rated | Not Required |
| Warranty | www.kichler.com/warranty |

Primary Lamping

| | |
|---------------|--------------|
| Lamp Included | Not Included |
|---------------|--------------|

Dimensions

| | |
|--------|-------|
| Height | 1.25" |
| Length | 2.50" |
| Width | 1.50" |

Alternate Lamps

| Lamp Included | Bulb Listing | Light Source | Max Wattage/Range | Bulb Product ID | Dimming |
|---------------|----------------|--------------|-------------------|-----------------|---------|
| No | Non-Applicable | | | | |

Notes:

- 1) Information provided is subject to change without notice. All values are design or typical values when measured under laboratory conditions.
- 2) Incandescent Equivalent: The incandescent equivalent as presented is an approximate number and is for reference only.