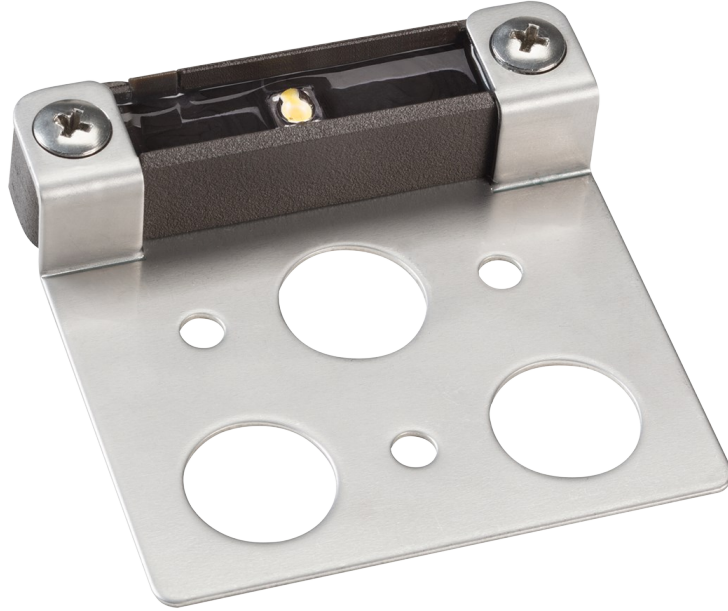


1 LED 2560K with Bracket AZT

15744AZT27 (Textured Architectural Bronze)

Project Name: _____
 Location: _____
 Type: _____
 Qty: _____
 Comments: _____



Dimensions

Height	0.75"
Length	3.00"
Width	3.00"

Ordering Information

Product ID	15744AZT27
Finish	Textured Architectural Bronze
Available Finishes	AZT, AZT, BBR, BBR, BBR, CO, CO, CO, GRY, GRY, SD, SD, WHT, WHT, WHT

Dimensions

Weight	0.30 LBS
--------	----------

Photometrics

Kelvin Temperature	2560K
--------------------	-------

Specifications

Material	Aluminum
----------	----------

Electrical

Voltage	12VAC/VDC
Operating Voltage Range	9-15 VAC/VDC

Qualifications

Safety Rated	Wet
Expected Life Span	40000 Hours
Warranty	www.kichler.com/warranty

Primary Lamping

Light Source	LED
Lamp Included	Integrated
Number of Lights/LEDs	1
Max or Nominal Watt	.2W

1 LED 3000K with Bracket AZT

15744AZT30 (Textured Architectural Bronze)

Project Name: _____
Location: _____
Type: _____
Qty: _____
Comments: _____



Dimensions

Height	0.75"
Length	3.00"
Width	3.00"

Ordering Information

Product ID	15744AZT30
Finish	Textured Architectural Bronze
Available Finishes	AZT, AZT, BBR, BBR, BBR, CO, CO, CO, GRY, GRY, SD, SD, WHT, WHT

Dimensions

Weight	0.30 LBS
--------	----------

Photometrics

Kelvin Temperature	2950K
--------------------	-------

Specifications

Material	Aluminum
----------	----------

Electrical

Voltage	12VAC/VDC
Operating Voltage Range	9-15 VAC/VDC

Qualifications

Safety Rated	Wet
Expected Life Span	40000 Hours
Warranty	www.kichler.com/warranty

Primary Lamping

Light Source	LED
Lamp Included	Integrated
Number of Lights/LEDs	1
Max or Nominal Watt	.2W

Notes:

- 1) Information provided is subject to change without notice. All values are design or typical values when measured under laboratory conditions.
- 2) Incandescent Equivalent: The incandescent equivalent as presented is an approximate number and is for reference only.

1 LED 2560K with Bracket BBR

15744BBR27 (Bronzed Brass)

Project Name: _____
Location: _____
Type: _____
Qty: _____
Comments: _____



Dimensions

Height	0.75"
Length	3.00"
Width	3.00"

Ordering Information

Product ID	15744BBR27
Finish	Bronzed Brass
Available Finishes	AZT, AZT, BBR, BBR, BBR, CO, CO, CO, GRY, GRY, SD, SD, WHT, WHT

Dimensions

Weight	0.30 LBS
--------	----------

Photometrics

Kelvin Temperature	2560K
--------------------	-------

Specifications

Material	Brass
----------	-------

Electrical

Voltage	12VAC/VDC
Operating Voltage Range	9-15 VAC/VDC

Qualifications

Safety Rated	Wet
Expected Life Span	40000 Hours
Warranty	www.kichler.com/warranty

Primary Lamping

Light Source	LED
Lamp Included	Integrated
Number of Lights/LEDs	1
Max or Nominal Watt	.2W

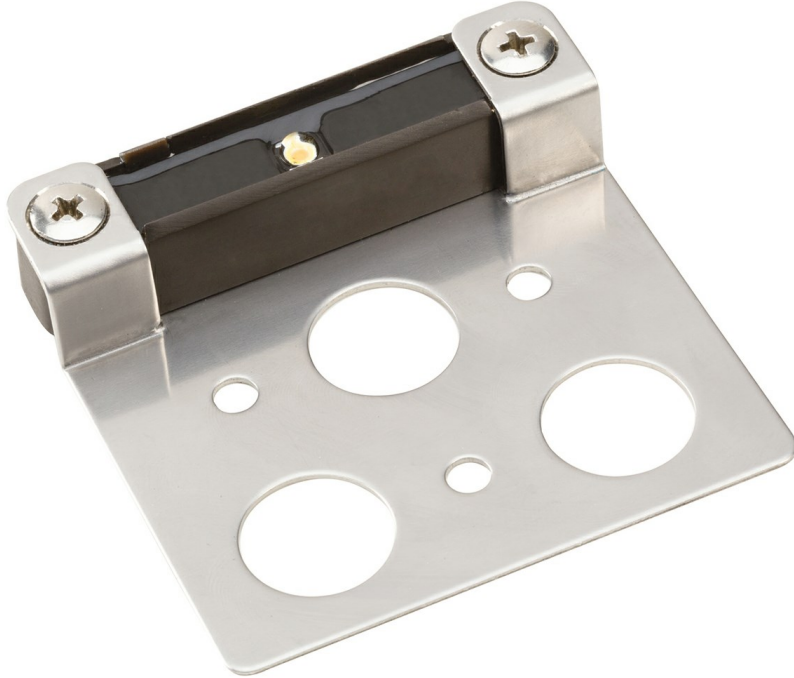
Notes:

- 1) Information provided is subject to change without notice. All values are design or typical values when measured under laboratory conditions.
- 2) Incandescent Equivalent: The incandescent equivalent as presented is an approximate number and is for reference only.

1 LED 2950K with Bracket BBR

15744BBR30 (Bronzed Brass)

Project Name: _____
Location: _____
Type: _____
Qty: _____
Comments: _____



Dimensions

Height	0.75"
Length	3.00"
Width	3.00"

Ordering Information

Product ID	15744BBR30
Finish	Bronzed Brass
Available Finishes	AZT, AZT, BBR, BBR, CO, CO, CO, GRY, GRY, SD, SD, WHT, WHT

Dimensions

Weight	0.30 LBS
--------	----------

Photometrics

Kelvin Temperature	2950K
--------------------	-------

Specifications

Material	Brass
----------	-------

Electrical

Voltage	12VAC/VDC
Operating Voltage Range	9-15 VAC/VDC

Qualifications

Safety Rated	Wet
Expected Life Span	40000 Hours
Warranty	www.kichler.com/warranty

Primary Lamping

Light Source	LED
Lamp Included	Integrated
Number of Lights/LEDs	1
Max or Nominal Watt	.2W

Notes:

- 1) Information provided is subject to change without notice. All values are design or typical values when measured under laboratory conditions.
- 2) Incandescent Equivalent: The incandescent equivalent as presented is an approximate number and is for reference only.

1 LED 2560K with Bracket CO

15744CO27 (Copper)

Project Name: _____
Location: _____
Type: _____
Qty: _____
Comments: _____



Ordering Information

Product ID	15744CO27
Finish	Copper
Available Finishes	AZT, AZT, BBR, BBR, CO, CO, CO, GRY, GRY, SD, SD, WHT, WHT

Dimensions

Weight	0.30 LBS
--------	----------

Photometrics

Kelvin Temperature	2560K
--------------------	-------

Specifications

Material	Brass
----------	-------

Electrical

Voltage	12VAC/VDC
Operating Voltage Range	9-15 VAC/VDC

Qualifications

Safety Rated	Wet
Expected Life Span	40000 Hours
Warranty	www.kichler.com/warranty

Primary Lamping

Light Source	LED
Lamp Included	Integrated
Number of Lights/LEDs	1
Max or Nominal Watt	.2W

Dimensions

Height	0.75"
Length	3.00"
Width	3.00"

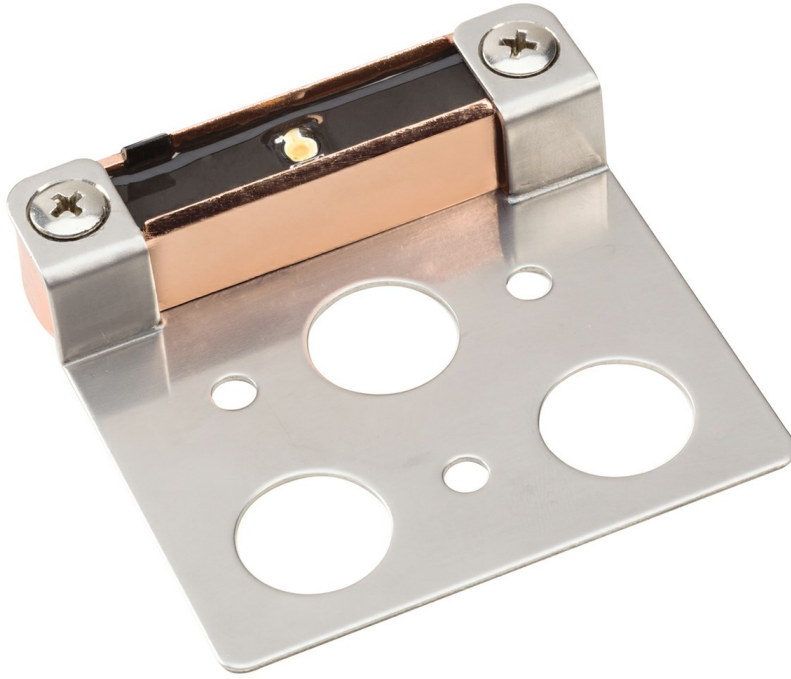
Notes:

- 1) Information provided is subject to change without notice. All values are design or typical values when measured under laboratory conditions.
- 2) Incandescent Equivalent: The incandescent equivalent as presented is an approximate number and is for reference only.

1 LED 2950K with Bracket CO

15744CO30 (Copper)

Project Name: _____
Location: _____
Type: _____
Qty: _____
Comments: _____



Dimensions

Height	0.75"
Length	3.00"
Width	3.00"

Ordering Information

Product ID	15744CO30
Finish	Copper
Available Finishes	AZT, AZT, BBR, BBR, CO, CO, CO, GRY, GRY, SD, SD, WHT, WHT

Dimensions

Weight	0.30 LBS
--------	----------

Photometrics

Kelvin Temperature	2950K
--------------------	-------

Specifications

Material	Brass
----------	-------

Electrical

Voltage	12VAC/VDC
Operating Voltage Range	9-15 VAC/VDC

Qualifications

Safety Rated	Wet
Expected Life Span	40000 Hours
Warranty	www.kichler.com/warranty

Primary Lamping

Light Source	LED
Lamp Included	Integrated
Number of Lights/LEDs	1
Max or Nominal Watt	.2W

Notes:

- 1) Information provided is subject to change without notice. All values are design or typical values when measured under laboratory conditions.
- 2) Incandescent Equivalent: The incandescent equivalent as presented is an approximate number and is for reference only.

1 LED 2560K with Bracket GRY

15744GRY27 (Gray)

Project Name: _____
Location: _____
Type: _____
Qty: _____
Comments: _____



Ordering Information

Product ID	15744GRY27
Finish	Gray
Available Finishes	AZT, AZT, BBR, BBR, BBR, CO, CO, CO, GRY, GRY, SD, SD, WHT, WHT, WHT

Dimensions

Weight	0.30 LBS
--------	----------

Photometrics

Kelvin Temperature	2560K
--------------------	-------

Specifications

Material	Aluminum
----------	----------

Electrical

Voltage	12VAC/VDC
Operating Voltage Range	9-15 VAC/VDC

Qualifications

Safety Rated	Wet
Expected Life Span	40000 Hours
Warranty	www.kichler.com/warranty

Primary Lamping

Light Source	LED
Lamp Included	Integrated
Number of Lights/LEDs	1
Max or Nominal Watt	.2W

Dimensions

Height	0.75"
Length	3.00"
Width	3.00"

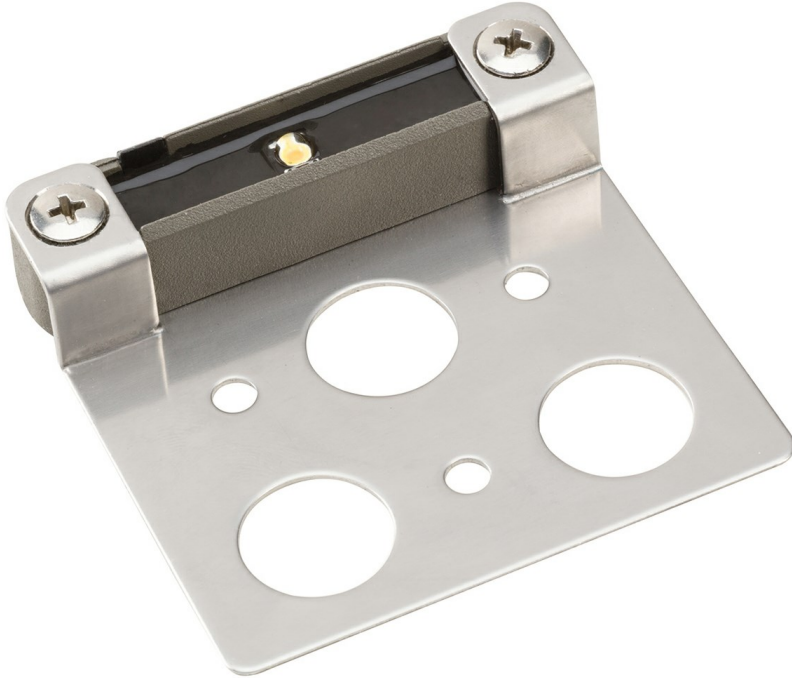
Notes:

- 1) Information provided is subject to change without notice. All values are design or typical values when measured under laboratory conditions.
- 2) Incandescent Equivalent: The incandescent equivalent as presented is an approximate number and is for reference only.

1 LED 2950K with Bracket GRY

15744GRY30 (Gray)

Project Name: _____
Location: _____
Type: _____
Qty: _____
Comments: _____



Dimensions

Height	0.75"
Length	3.00"
Width	3.00"

Ordering Information

Product ID	15744GRY30
Finish	Gray
Available Finishes	AZT, AZT, BBR, BBR, CO, CO, CO, GRY, GRY, SD, SD, WHT, WHT

Dimensions

Weight	0.30 LBS
--------	----------

Photometrics

Kelvin Temperature	2950K
--------------------	-------

Specifications

Material	Aluminum
----------	----------

Electrical

Voltage	12VAC/VDC
Operating Voltage Range	9-15 VAC/VDC

Qualifications

Safety Rated	Wet
Expected Life Span	40000 Hours
Warranty	www.kichler.com/warranty

Primary Lamping

Light Source	LED
Lamp Included	Integrated
Number of Lights/LEDs	1
Max or Nominal Watt	.2W

Notes:

- 1) Information provided is subject to change without notice. All values are design or typical values when measured under laboratory conditions.
- 2) Incandescent Equivalent: The incandescent equivalent as presented is an approximate number and is for reference only.

1 LED 2560K with Bracket SD

15744SD27 (Sand)

Project Name: _____
Location: _____
Type: _____
Qty: _____
Comments: _____



Dimensions

Height	0.75"
Length	3.00"
Width	3.00"

Ordering Information

Product ID	15744SD27
Finish	Sand
Available Finishes	AZT, AZT, BBR, BBR, BBR, CO, CO, CO, GRY, GRY, SD, SD, WHT, WHT

Dimensions

Weight	0.30 LBS
--------	----------

Photometrics

Kelvin Temperature	2560K
--------------------	-------

Specifications

Material	Aluminum
----------	----------

Electrical

Voltage	12VAC/VDC
Operating Voltage Range	9-15 VAC/VDC

Qualifications

Safety Rated	Wet
Expected Life Span	40000 Hours
Warranty	www.kichler.com/warranty

Primary Lamping

Light Source	LED
Lamp Included	Integrated
Number of Lights/LEDs	1
Max or Nominal Watt	.2W

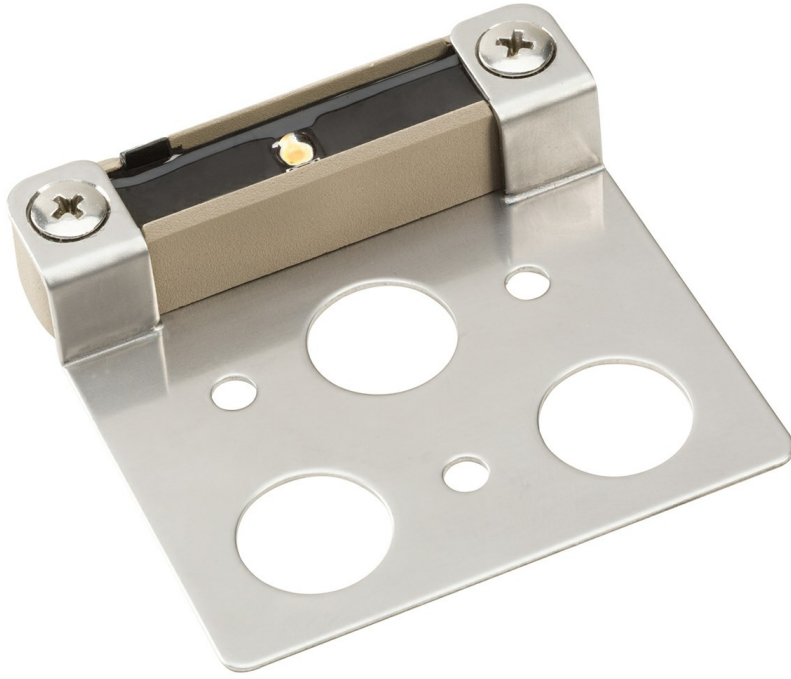
Notes:

- 1) Information provided is subject to change without notice. All values are design or typical values when measured under laboratory conditions.
- 2) Incandescent Equivalent: The incandescent equivalent as presented is an approximate number and is for reference only.

1 LED 2950K with Bracket SD

15744SD30 (Sand)

Project Name: _____
Location: _____
Type: _____
Qty: _____
Comments: _____



Dimensions

Height	0.75"
Length	3.00"
Width	3.00"

Ordering Information

Product ID	15744SD30
Finish	Sand
Available Finishes	AZT, AZT, BBR, BBR, BBR, CO, CO, CO, GRY, GRY, SD, SD, WHT, WHT

Dimensions

Weight	0.30 LBS
--------	----------

Photometrics

Kelvin Temperature	2950K
--------------------	-------

Specifications

Material	Aluminum
----------	----------

Electrical

Voltage	12VAC/VDC
Operating Voltage Range	9-15 VAC/VDC

Qualifications

Safety Rated	Wet
Expected Life Span	40000 Hours
Warranty	www.kichler.com/warranty

Primary Lamping

Light Source	LED
Lamp Included	Integrated
Number of Lights/LEDs	1
Max or Nominal Watt	.2W

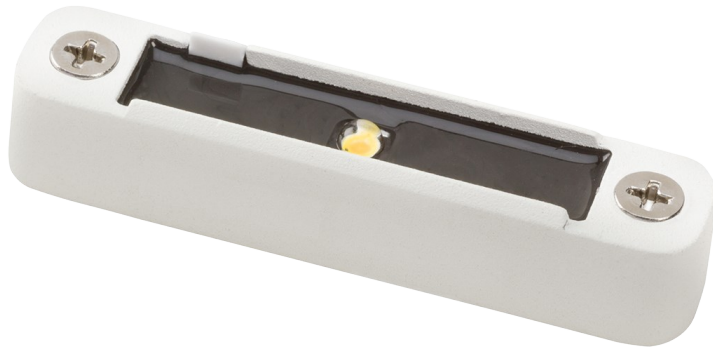
Notes:

- 1) Information provided is subject to change without notice. All values are design or typical values when measured under laboratory conditions.
- 2) Incandescent Equivalent: The incandescent equivalent as presented is an approximate number and is for reference only.

1 LED 2560K with Bracket WHT

15744WHT27 (Textured White)

Project Name: _____
Location: _____
Type: _____
Qty: _____
Comments: _____



Ordering Information

Product ID	15744WHT27
Finish	Textured White
Available Finishes	AZT, AZT, BBR, BBR, BBR, CO, CO, CO, GRY, GRY, SD, SD, WHT, WHT

Dimensions

Weight	0.30 LBS
--------	----------

Photometrics

Kelvin Temperature	2560K
--------------------	-------

Specifications

Material	Aluminum
----------	----------

Electrical

Voltage	12VAC/VDC
Operating Voltage Range	9-15 VAC/VDC

Qualifications

Safety Rated	Wet
Expected Life Span	40000 Hours
Warranty	www.kichler.com/warranty

Primary Lamping

Light Source	LED
Lamp Included	Integrated
Number of Lights/LEDs	1
Max or Nominal Watt	.2W

Dimensions

Height	0.75"
Length	3.00"
Width	3.00"

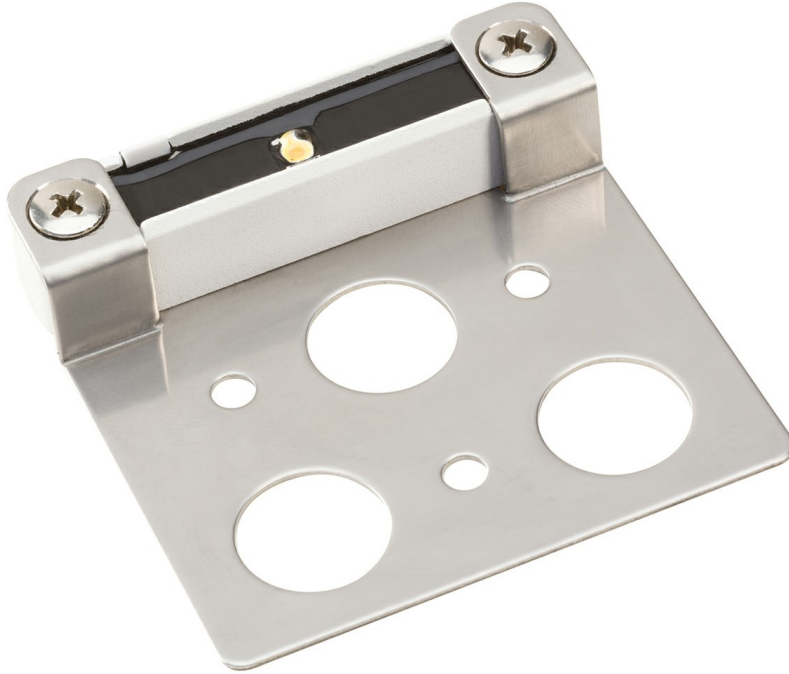
Notes:

- 1) Information provided is subject to change without notice. All values are design or typical values when measured under laboratory conditions.
- 2) Incandescent Equivalent: The incandescent equivalent as presented is an approximate number and is for reference only.

1 LED 3000K with Bracket WHT

15744WHT30 (Textured White)

Project Name: _____
Location: _____
Type: _____
Qty: _____
Comments: _____



Dimensions

Height	0.75"
Length	3.00"
Width	3.00"

Ordering Information

Product ID	15744WHT30
Finish	Textured White
Available Finishes	AZT, AZT, BBR, BBR, CO, CO, CO, GRY, GRY, SD, SD, WHT, WHT

Dimensions

Weight	0.30 LBS
--------	----------

Photometrics

Kelvin Temperature	2950K
--------------------	-------

Specifications

Material	Aluminum
----------	----------

Electrical

Voltage	12VAC/VDC
Operating Voltage Range	9-15 VAC/VDC

Qualifications

Safety Rated	Wet
Expected Life Span	40000 Hours
Warranty	www.kichler.com/warranty

Primary Lamping

Light Source	LED
Lamp Included	Integrated
Number of Lights/LEDs	1
Max or Nominal Watt	.2W

Notes:

- 1) Information provided is subject to change without notice. All values are design or typical values when measured under laboratory conditions.
- 2) Incandescent Equivalent: The incandescent equivalent as presented is an approximate number and is for reference only.