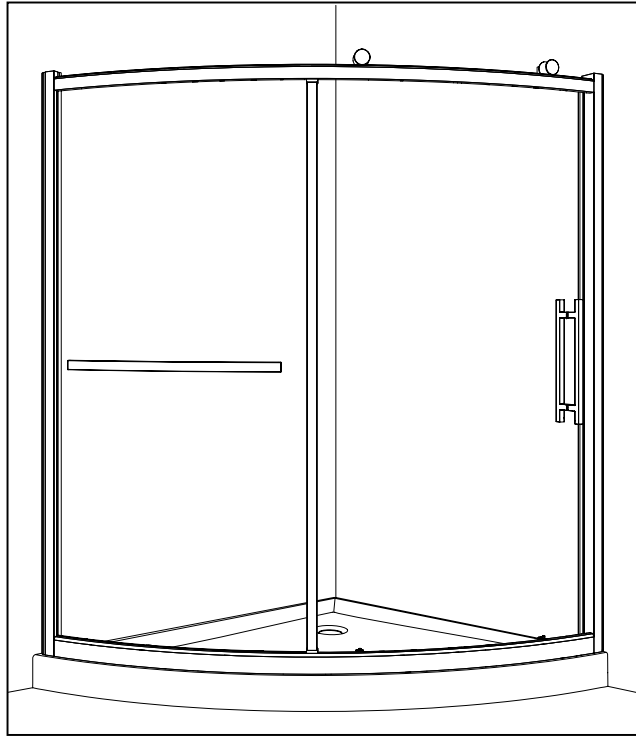
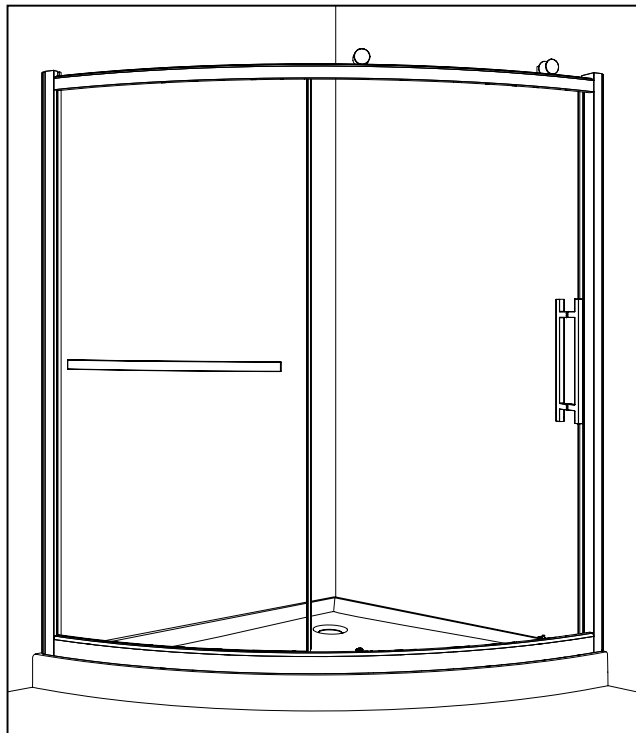


# R015

With vertical column / Avec montant vertical



Without vertical column / Sans montant vertical



Please keep this manual and product code number for future reference and replacement parts ordering if necessary.

***Veillez conserver ce manuel et le code de produit pour des références futures, et au besoin, la commande les pièces de rechange.***

#### GENERAL INSTRUCTIONS

- Read this manual carefully and completely before proceeding.
- It is recommended that you wear safety glasses at all times during the installation.

En

#### INSTALLATION OVER CERAMIC TILES

- If your shower door is to be installed over ceramic tiles, the tiles should lay completely under the wall jamb.
- Silicone should be used to seal the gap where the ceramic tiles meet the fixed panel.

#### NOTICE

- Caulking: no sealant is required inside the shower, unless otherwise stated.
- Some models are equipped with clear sealing gaskets.

#### CARE FOR YOUR SHOWER DOOR

- Never use scouring powder pads or sharp instruments on metal pieces or glass panels. An occasional wiping down with a mild soap diluted in water is all that is needed to keep the panels and aluminum parts looking new.
- We recommend wiping the glass panels with a squeegee after each use.

Product specifications are subject to change without notice.

#### INSTRUCTIONS GÉNÉRALES

- Lire attentivement et complètement le manuel d'installation avant de procéder.
- Il est recommandé de porter des lunettes de sécurité en tout temps lors de l'installation.

Fr

#### INSTALLATION SUR LES TUILES EN CÉRAMIQUE

- Si votre porte de douche doit être installée sur une bordure en céramique, le jambage doit reposer complètement sur cette dernière.
- Le calfeutrage doit être appliqué sur le côté extérieur de la douche où le panneau fixe rencontre la bordure en céramique.

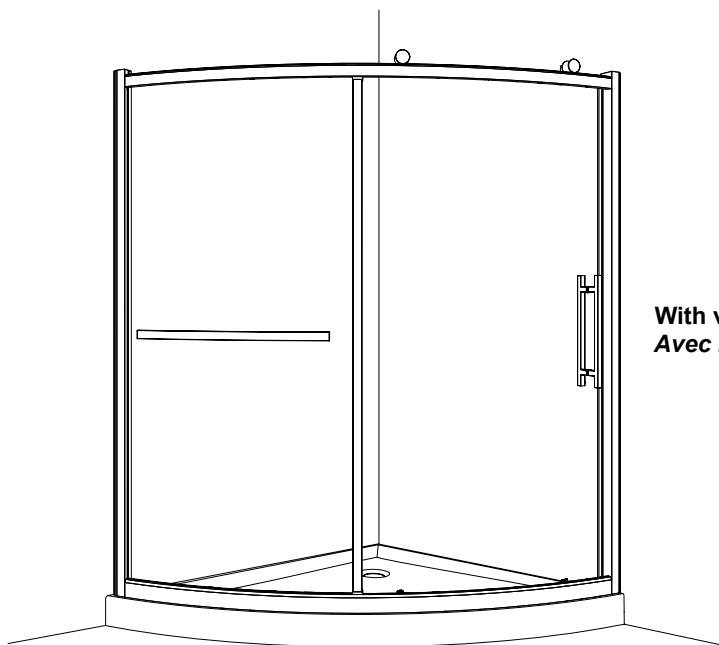
#### NOTE

- Calfeutrage: aucun scellant n'est nécessaire à l'intérieur de la douche.
- Certains modèles sont dotés de joints d'étanchéité clairs.

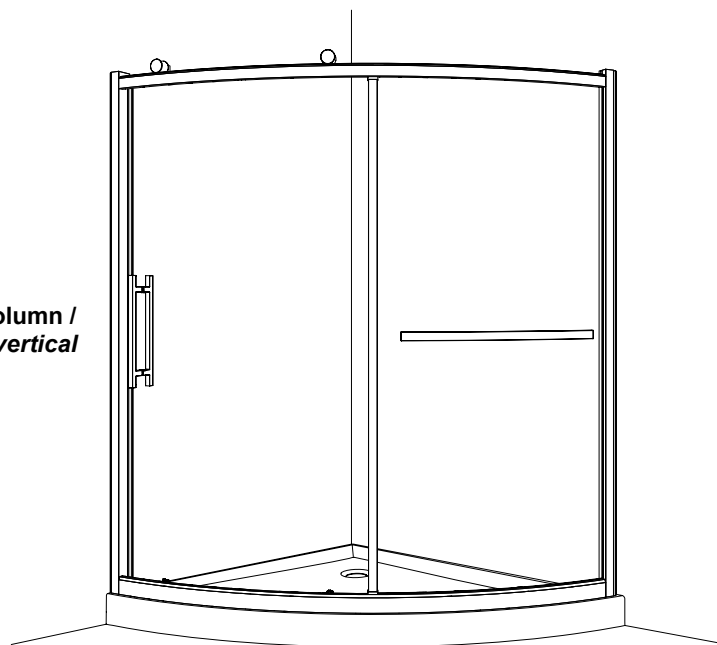
#### L'ENTRETIEN DE VOTRE DOUCHE

- Ne jamais utiliser de poudre ou de tampon à récurer, ni d'instrument tranchant sur les parties en métal ou en verre. De temps à autre, il suffit de nettoyer la porte avec une solution d'eau et un détergent doux pour conserver l'aspect neuf des panneaux de verre et du cadre en aluminium.
- Nous recommandons de passer une raclette de douche sur les panneaux de verre après chaque utilisation.

Des changements peuvent être apportés au produit sans préavis.

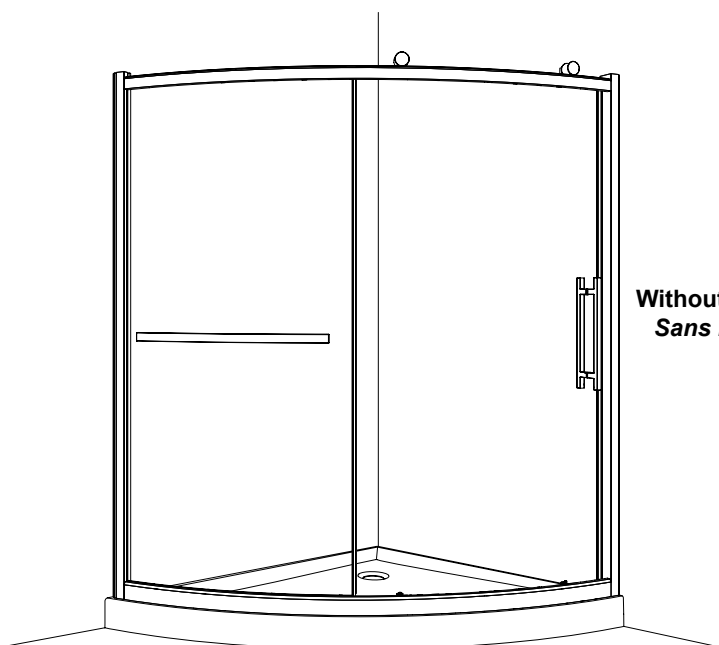


**With vertical column /  
Avec montant vertical**

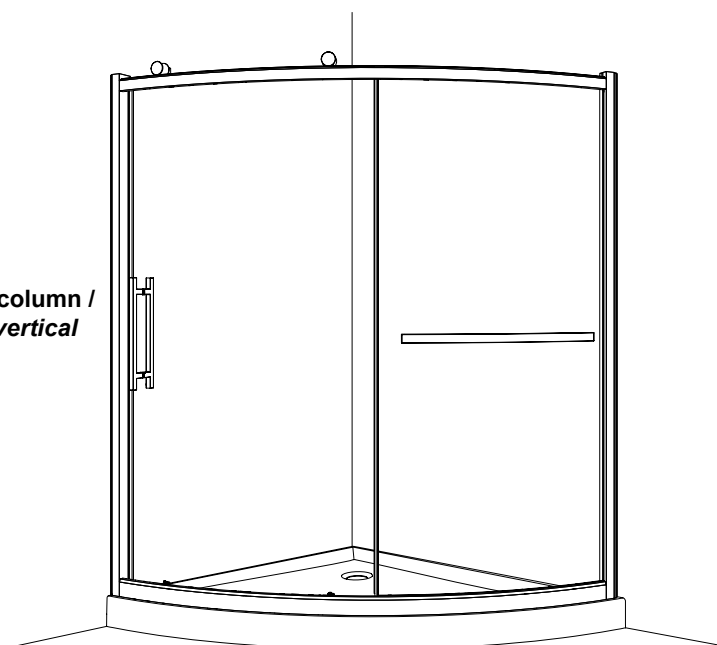


**These configurations are shown in the installation.**

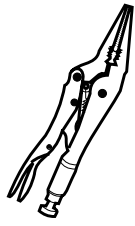
*Ces configurations sont illustrées dans l'installation.*



**Without vertical column /  
Sans montant vertical**



**TOOLS AND MATERIAL REQUIRED / OUTILS ET MATÉRIAUX REQUIS**



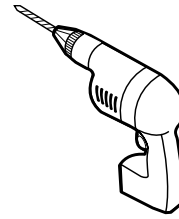
**LONG NOSE LOCKING PLIERS (X2)**  
*PINCE SERRE ÉTAU (X2)*



**SCREWDRIVER**  
*TOURNEVIS*



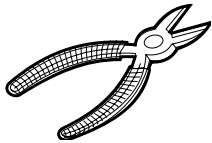
**SCREWDRIVER**  
*TOURNEVIS*



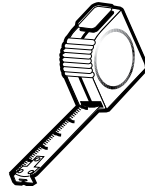
**DRILL**  
*PERCEUSE*



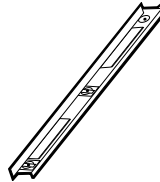
**PENCIL**  
*CRAYON*



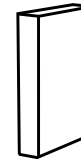
**CUTTING PLIERS**  
*PINCE COUPANTE*



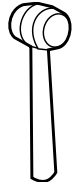
**TAPE MEASURE**  
*RUBAN À MESURER*



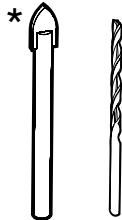
**LEVEL**  
*NIVEAU*



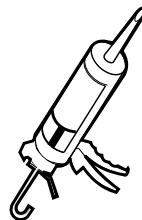
**BLOCK**  
*BLOC*



**MALLET**  
*MAILLET*



**1/4" & 1/8" DRILL BITS**  
*MÈCHE 1/4" & 1/8"*



**SILICONE**  
*SCCELLANT*



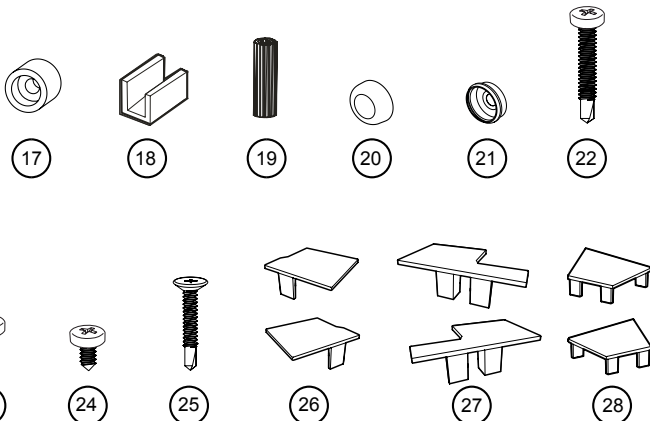
**5/16" HEX NUT DRIVER**  
*TOURNE-ÉCROU 5/16"*

**\* Use a 1/4" drill bit when drilling into ceramic tiles**

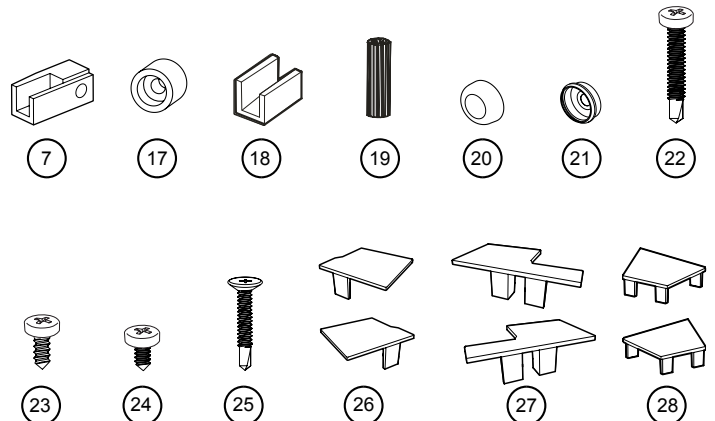
*\* Utiliser une mèche de 1/4" pour percer des tuiles en céramique.*

**HARDWARE / QUINCAILLERIE**

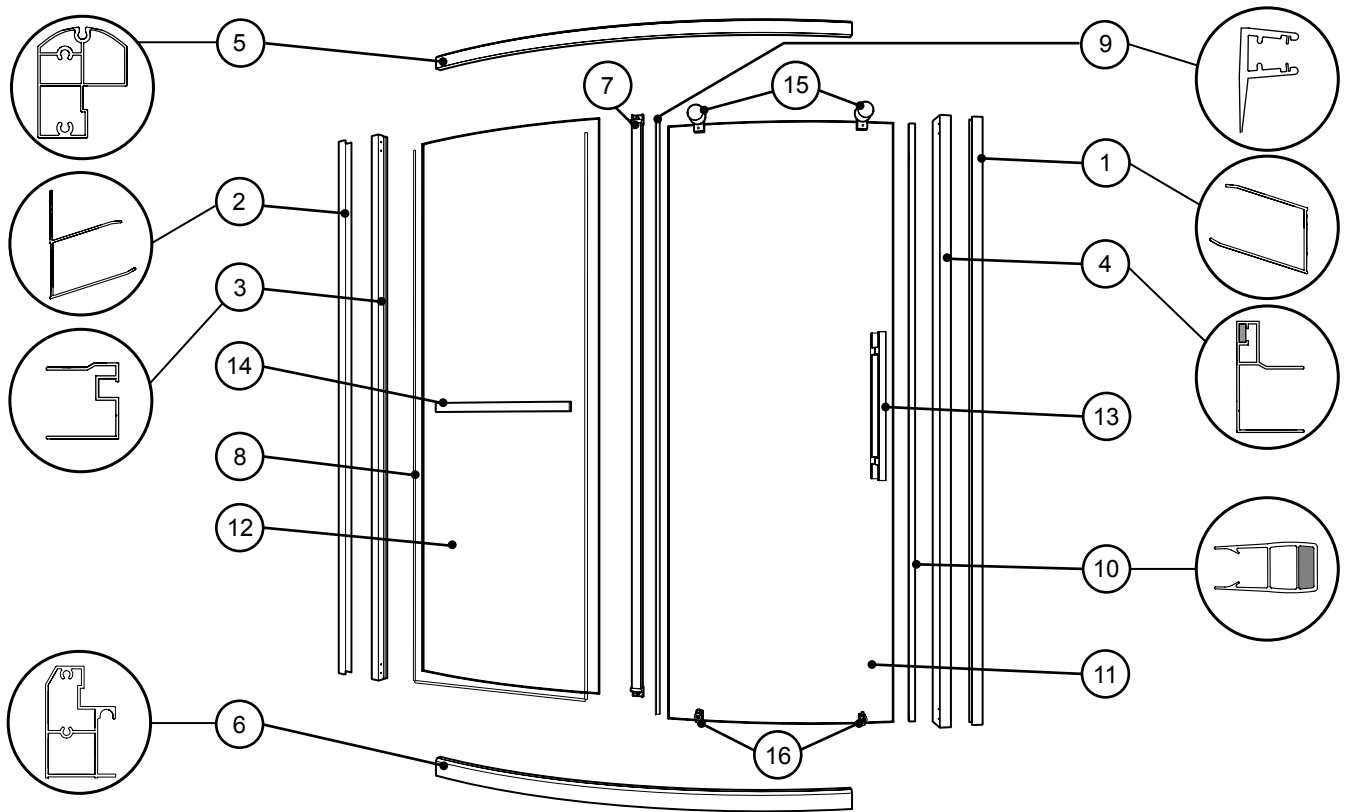
**With vertical column /  
Avec montant vertical**



**Without vertical column /  
Sans montant vertical**

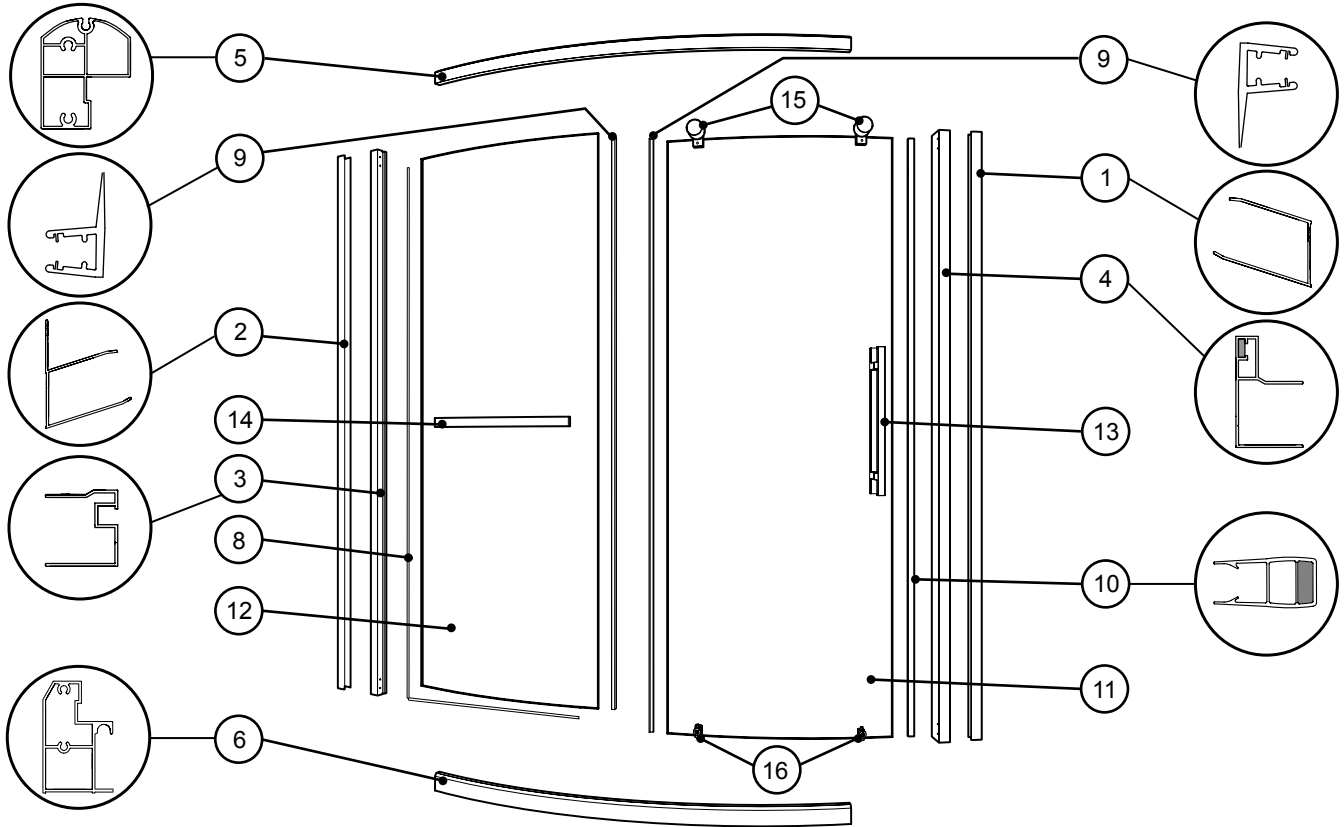


**PARTS LISTING (with vertical column) / LISTE DES PIÈCES (avec montant vertical)**

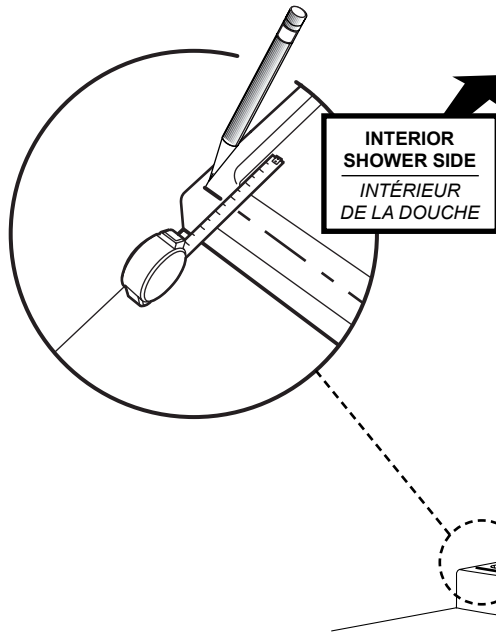


ITEM	PARTS AND HARDWARE / PIÈCES ET QUINCAILLERIE	QTY
1	WALL JAMB / JAMBAGE	1
2	WALL JAMB WITH FLANGE / JAMBAGE AVEC BRIDE	1
3	EXPANDER / EXTENSEUR	1
4	MAGNETIC EXPANDER / EXTENSEUR MAGNÉTIQUE	1
5	TOP RAIL / RAIL SUPÉRIEUR	1
6	BOTTOM RAIL / RAIL INFÉRIEUR	1
7	VERTICAL COLUMN / MONTANT VERTICAL	1
8	EXTERIOR GASKET / JOINT EXTÉRIEUR	1
9	SIDE GASKET / JOINT LATÉRAL	1
10	MAGNETIC GASKET / JOINT MAGNÉTIQUE	1
11	DOOR PANEL / PANNEAU DE PORTE	1
12	FIXED PANEL / PANNEAU FIXE	1
13	HANDLE / POIGNÉE	1
14	TOWEL BAR / BARRE À SERVIETTE	1
15	TOP WHEEL / ROULETTE SUPÉRIEUR	2
16	BOTTOM WHEEL / ROULETTE INFÉRIEUR	2
17	STOPPER / BUTOIR	1
18	GLASS SUPPORT / SUPPORT DE VERRE	4
19	WALL PLUG / CHEVILLE	8
20	SCREW CAP / CAPUCHON COUVRE-VIS	10
21	BACK SCREW CAP / L'ARRIÈRE DU CAPUCHON COUVRE-VIS	10
22	PAN HEAD SELF DRILLING SCREW #M4-35 / VIS PAN AUTO-PERÇANTE #M4-35	16
23	PAN HEAD SCREW #M4-12 / VIS PAN #M4-12	1
24	PAN HEAD SELF DRILLING SCREW #M4-10 / VIS PAN AUTO-PERÇANTE #M4-10	6
25	FLAT HEAD SELF DRILLING SCREW #M4-20 / VIS À TÊTE PLATE AUTO-PERÇANTE #M4-20	2
26	COVER FOR THE EXPANDER / CAPUCHON POUR L'EXTENSEUR	1
27	COVER FOR THE MAGNETIC EXPANDER / CAPUCHON POUR L'EXTENSEUR MAGNÉTIQUE	1
28	COVER FOR THE WALL JAMB / CAPUCHON POUR LE JAMBAGE	2

**PARTS LISTING (without vertical column) / LISTE DES PIÈCES (sans montant vertical)**

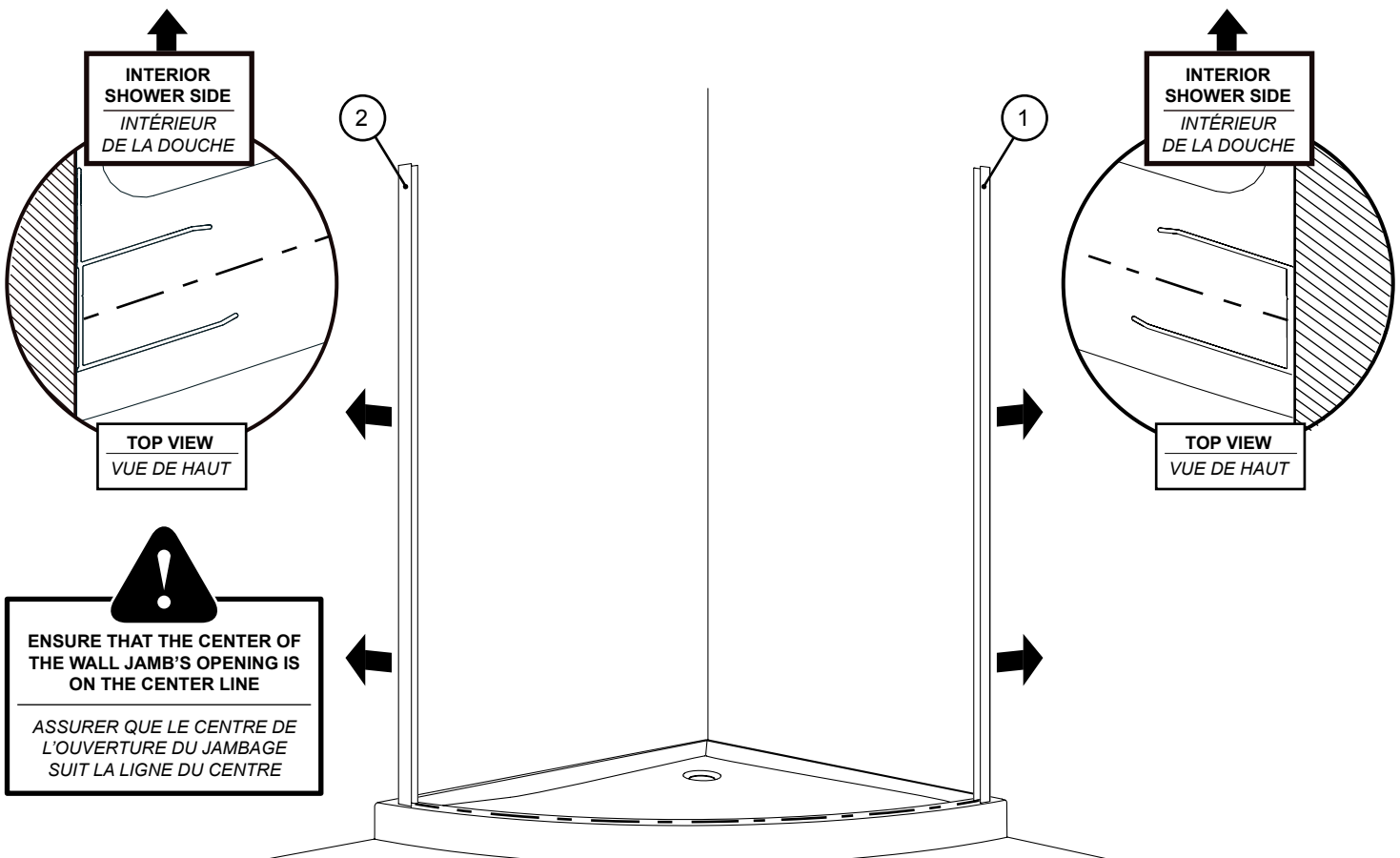


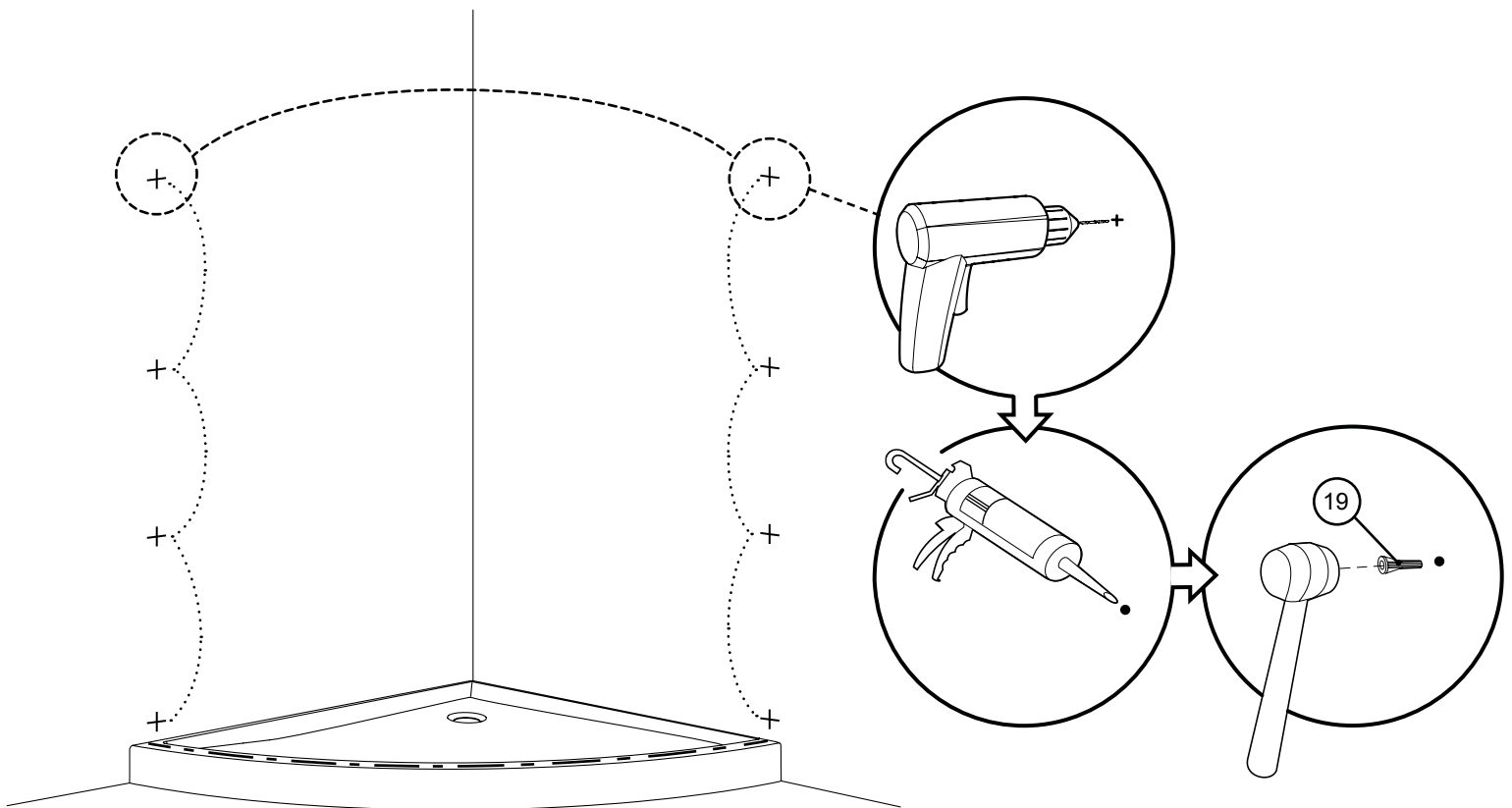
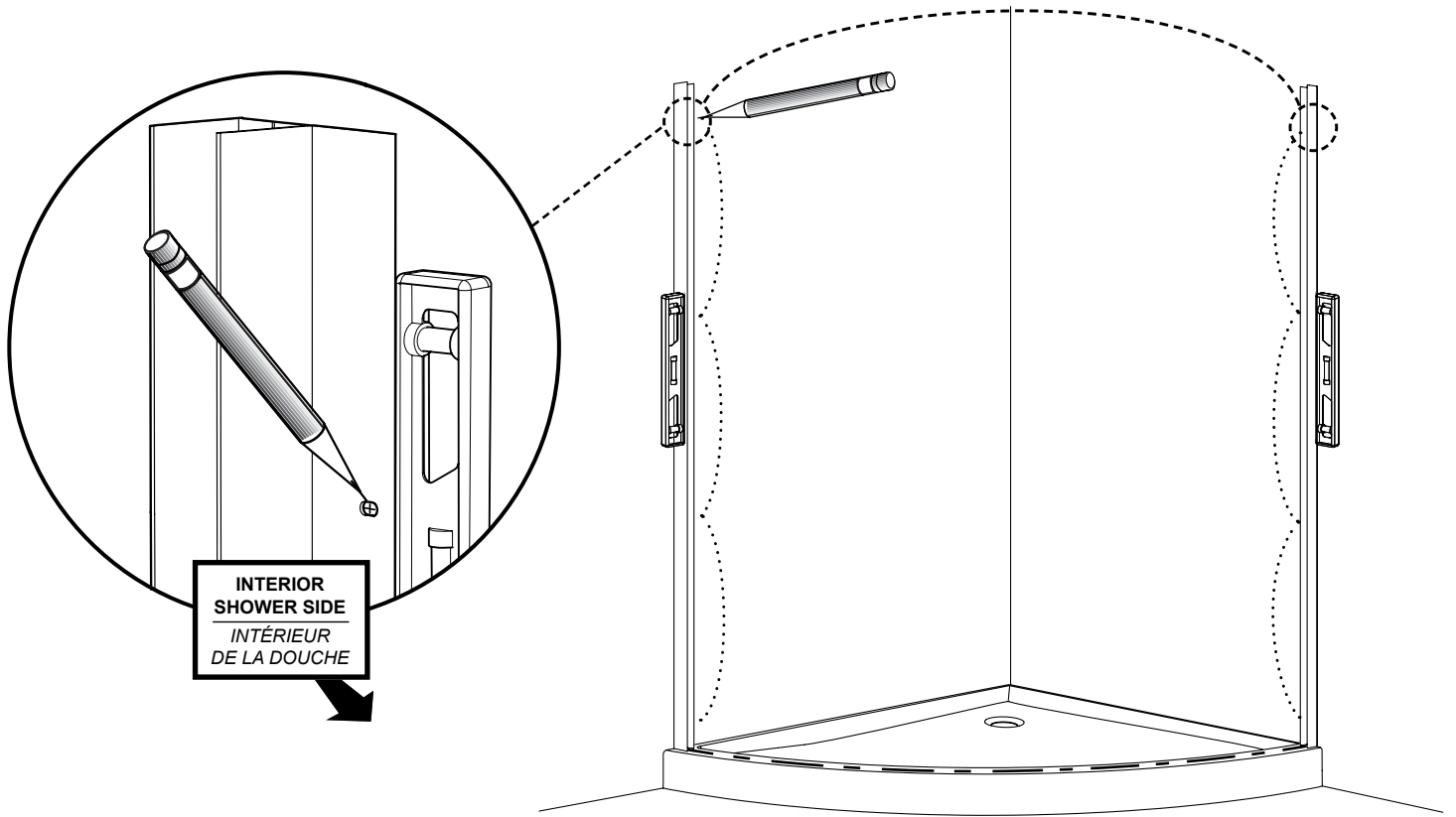
ITEM	PARTS AND HARDWARE / PIÈCES ET QUINCAILLERIE	QTY
1	FLANGELESS WALL JAMB / JAMBAGE SANS COLLET	1
2	WALL JAMB WITH FLANGE / JAMBAGE AVEC BRIDE	1
3	EXPANDER / EXTENSEUR	1
4	MAGNETIC EXPANDER / EXTENSEUR MAGNÉTIQUE	1
5	TOP RAIL / RAIL SUPÉRIEUR	1
6	BOTTOM RAIL / RAIL INFÉRIEUR	1
7	GLASS FASTENER / FIXATION DE VERRE	2
8	EXTERIOR GASKET / JOINT EXTÉRIEUR	1
9	SIDE GASKET / JOINT LATÉRAL	2
10	MAGNETIC GASKET / JOINT MAGNÉTIQUE	1
11	DOOR PANEL / PANNEAU DE PORTE	1
12	FIXED PANEL / PANNEAU FIXE	1
13	HANDLE / POIGNÉE	1
14	TOWEL BAR / BARRE À SERVIETTE	1
15	TOP WHEEL / ROULETTE SUPÉRIEUR	2
16	BOTTOM WHEEL / ROULETTE INFÉRIEUR	2
17	STOPPER / BUTOIR	1
18	GLASS SUPPORT / SUPPORT DE VERRE	4
19	WALL PLUG / CHEVILLE	8
20	SCREW CAP / CAPUCHON COUVRE-VIS	10
21	BACK SCREW CAP / L'ARRIÈRE DU CAPUCHON COUVRE-VIS	10
22	PAN HEAD SELF DRILLING SCREW #M4-35 / VIS PAN AUTO-PERÇANTE #M4-35	16
23	PAN HEAD SCREW #M4-12 / VIS PAN #M4-12	1
24	PAN HEAD SELF DRILLING SCREW #M4-10 / VIS PAN AUTO-PERÇANTE #M4-10	6
25	FLAT HEAD SELF DRILLING SCREW #M4-20 / VIS À TÊTE PLATE AUTO-PERÇANTE #M4-20	2
26	COVER FOR THE EXPANDER / CAPUCHON POUR L'EXTENSEUR	1
27	COVER FOR THE MAGNETIC EXPANDER / CAPUCHON POUR L'EXTENSEUR MAGNÉTIQUE	1
28	COVER FOR THE WALL JAMB / CAPUCHON POUR LE JAMBAGE	2



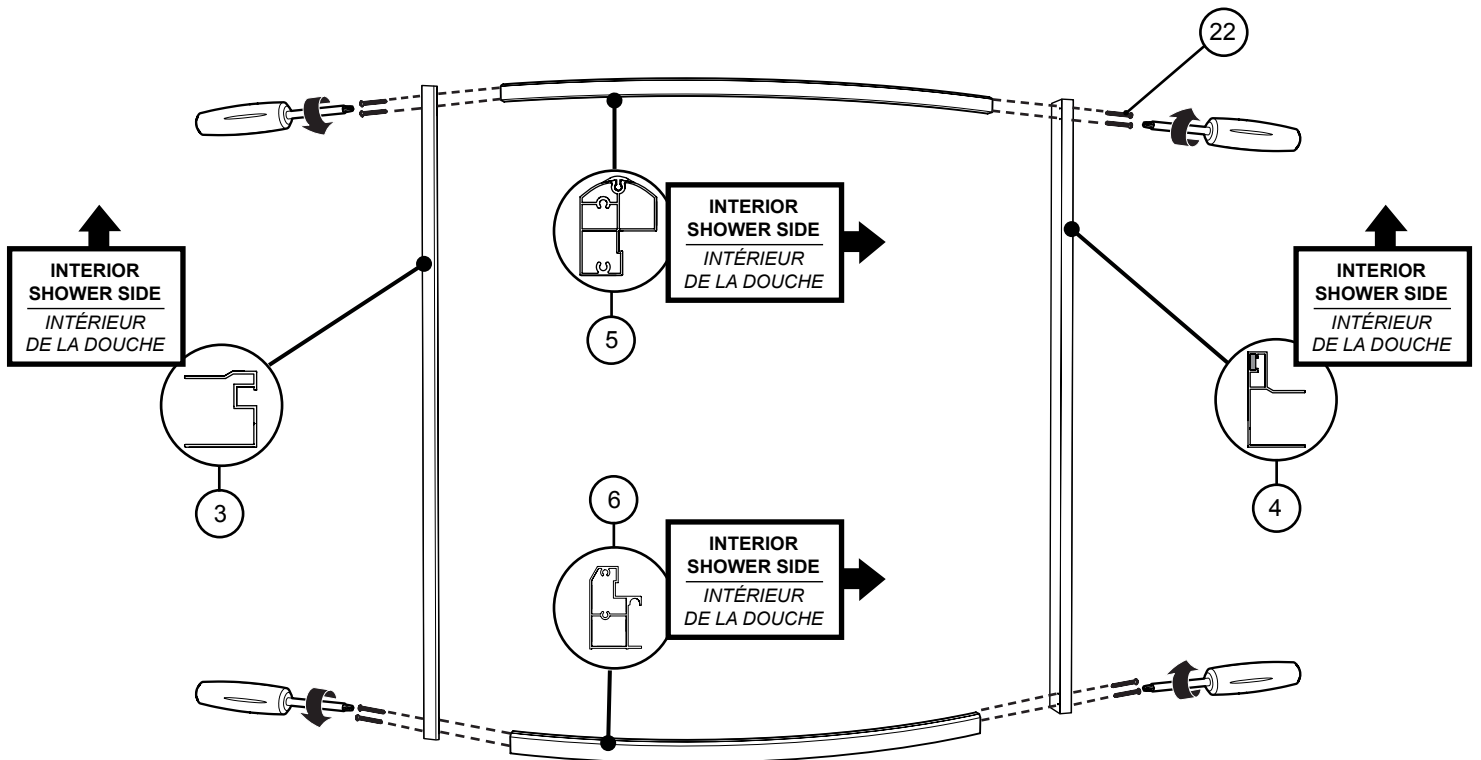
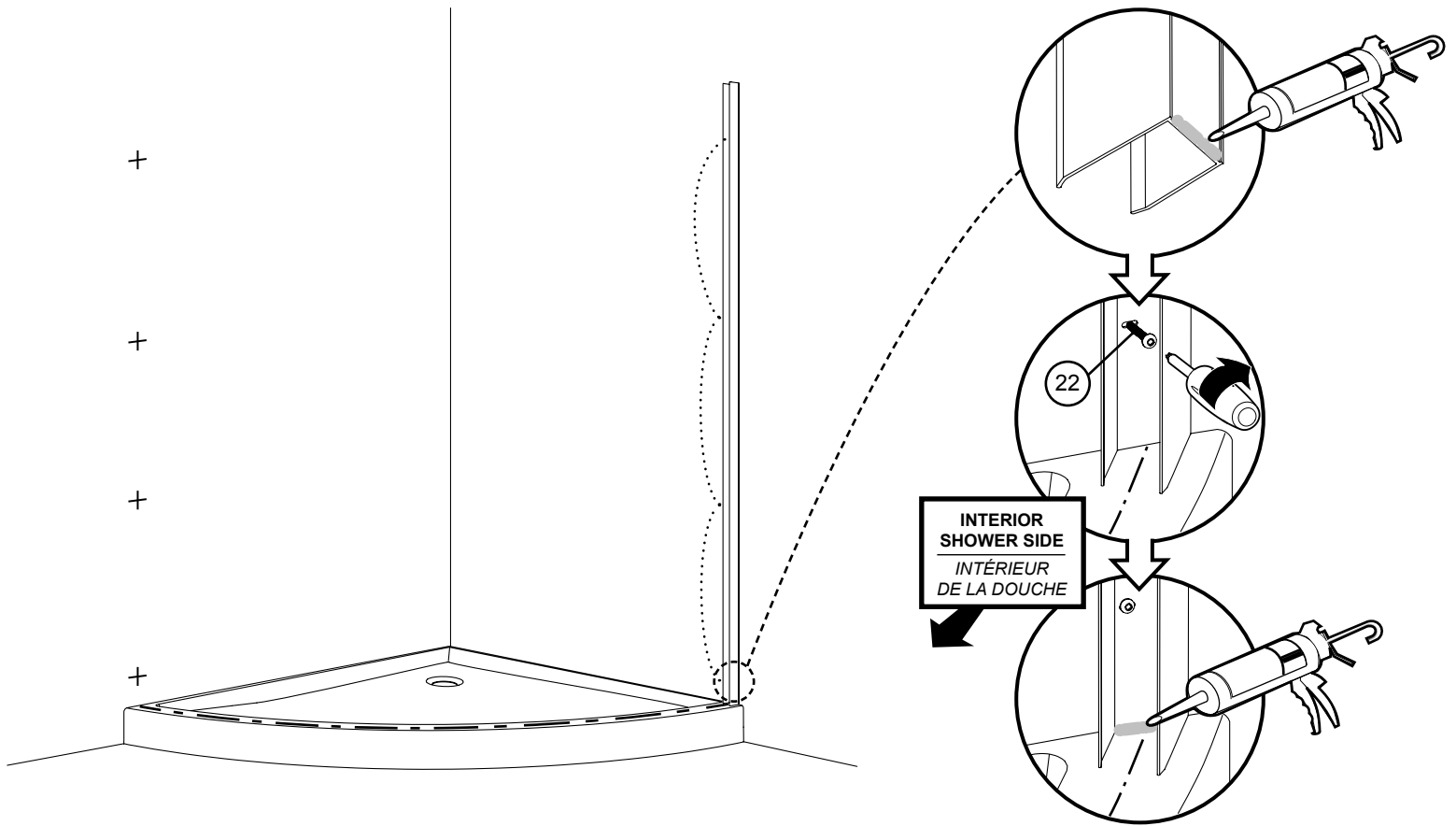
**THE INSTALLATION SHOWN IS BASED ON PLUMB FINISHED WALLS AND A LEVELLED BASE. IF THESE CONDITIONS ARE NOT MET, PLEASE ADJUST ACCORDINGLY.**

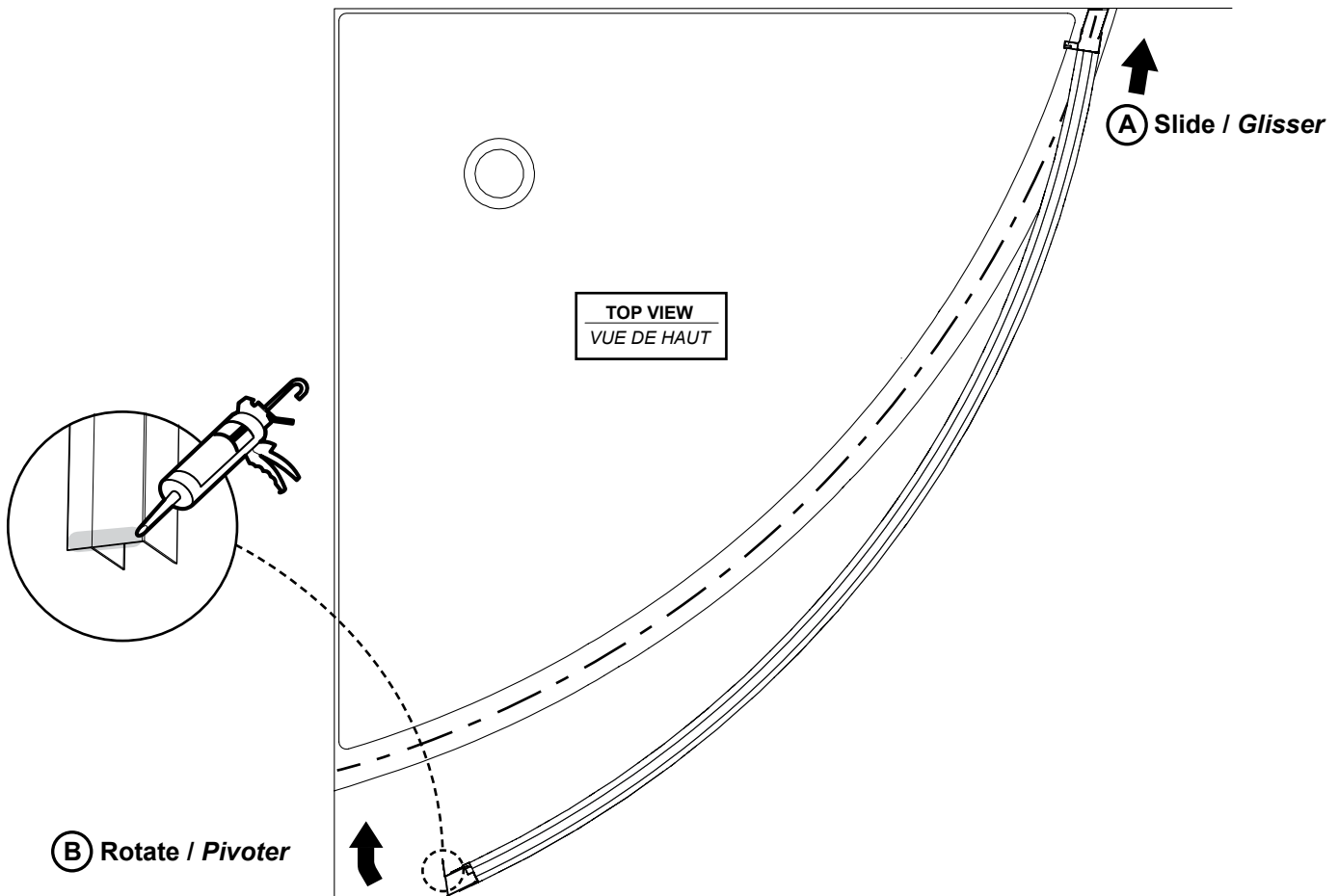
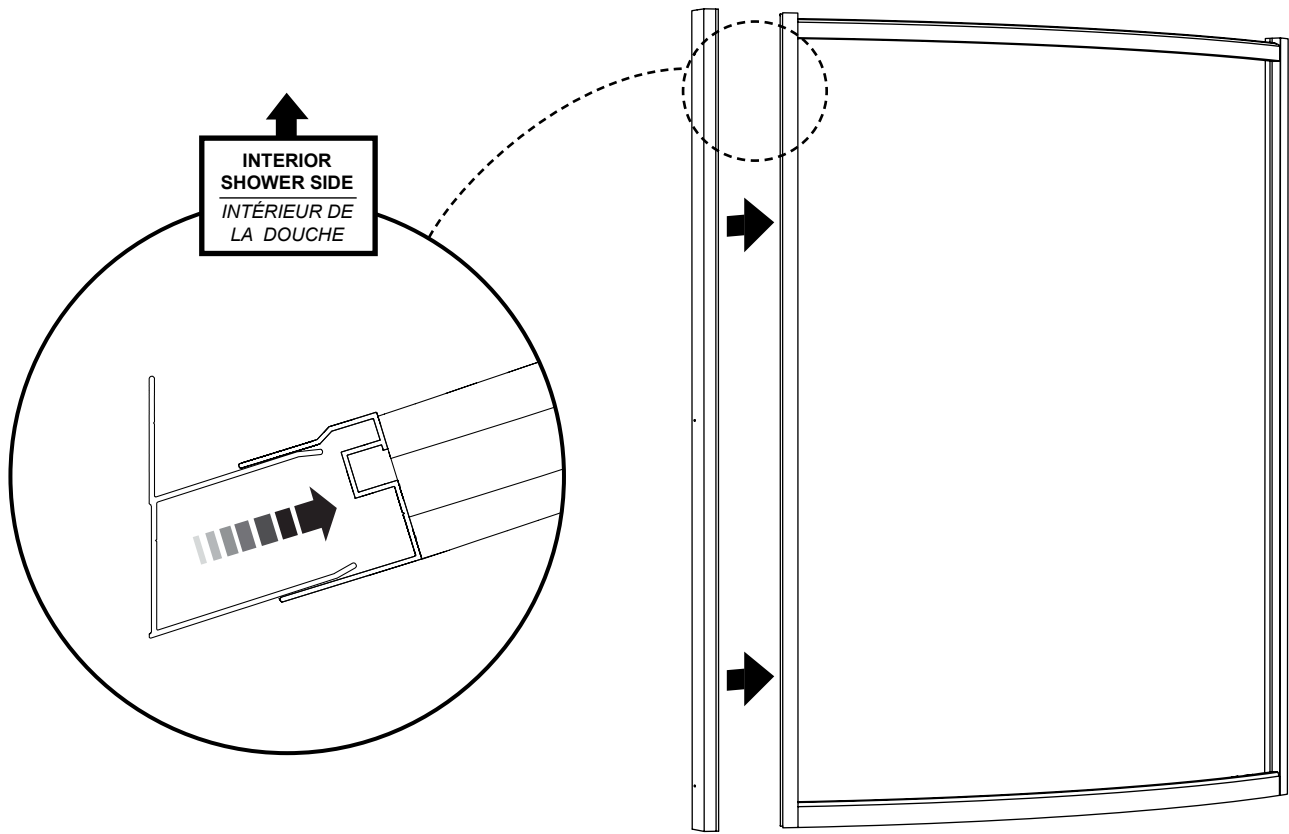
*L'INSTALLATION ILLUSTRÉE EST BASÉE SUR DES MURS FINIS D'APLOMB ET UNE BASE DE DOUCHE NIVELÉE. SI CES CONDITIONS NE SONT PAS PRÉSENTÉES, VEUILLEZ AJUSTER EN CONSÉQUENCE.*

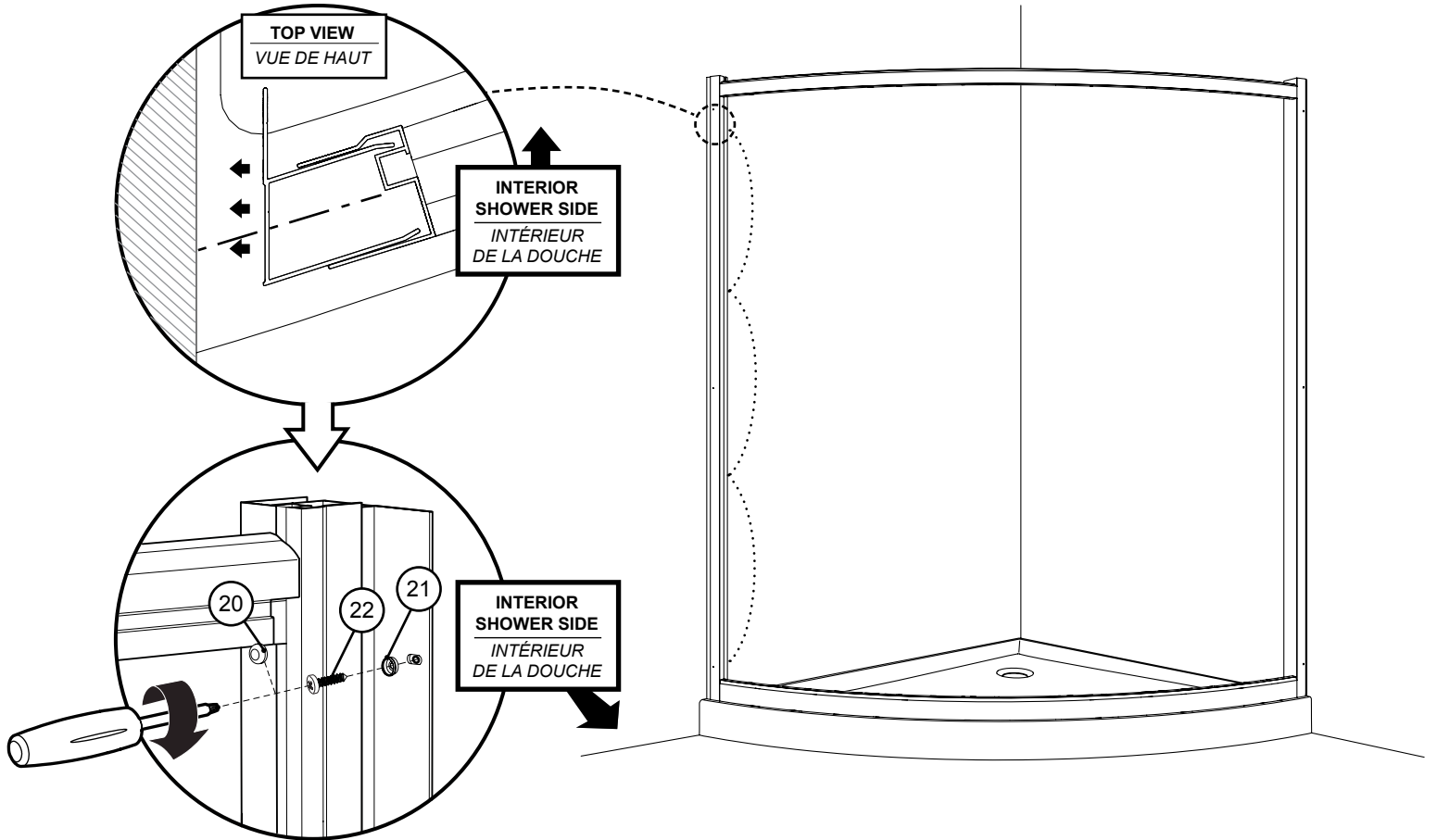




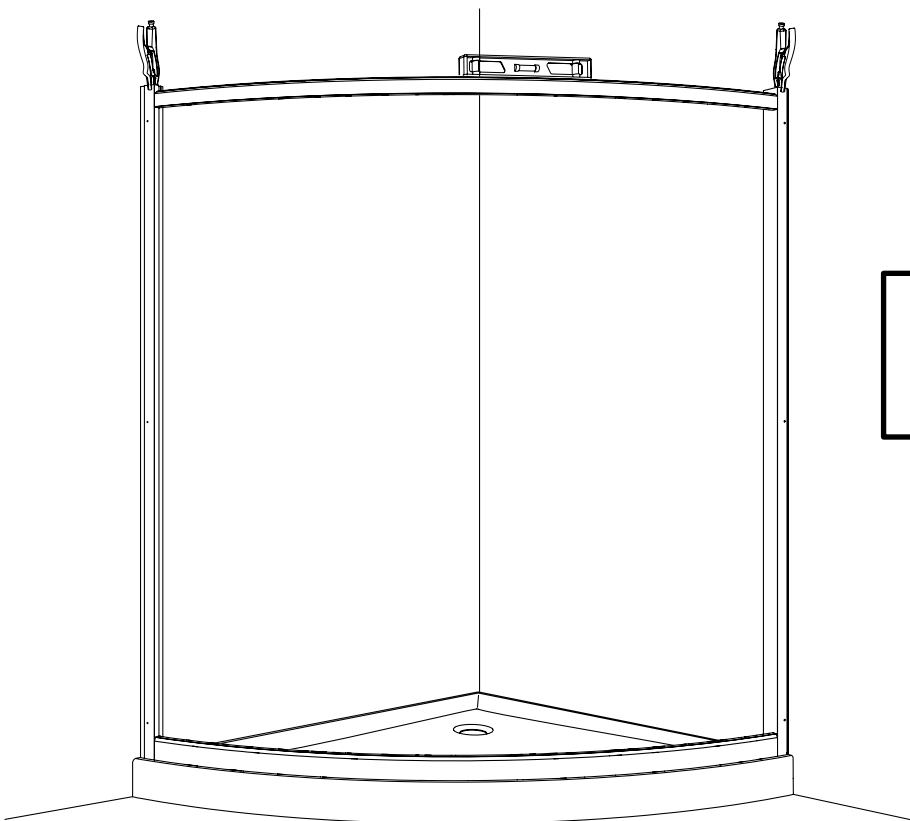






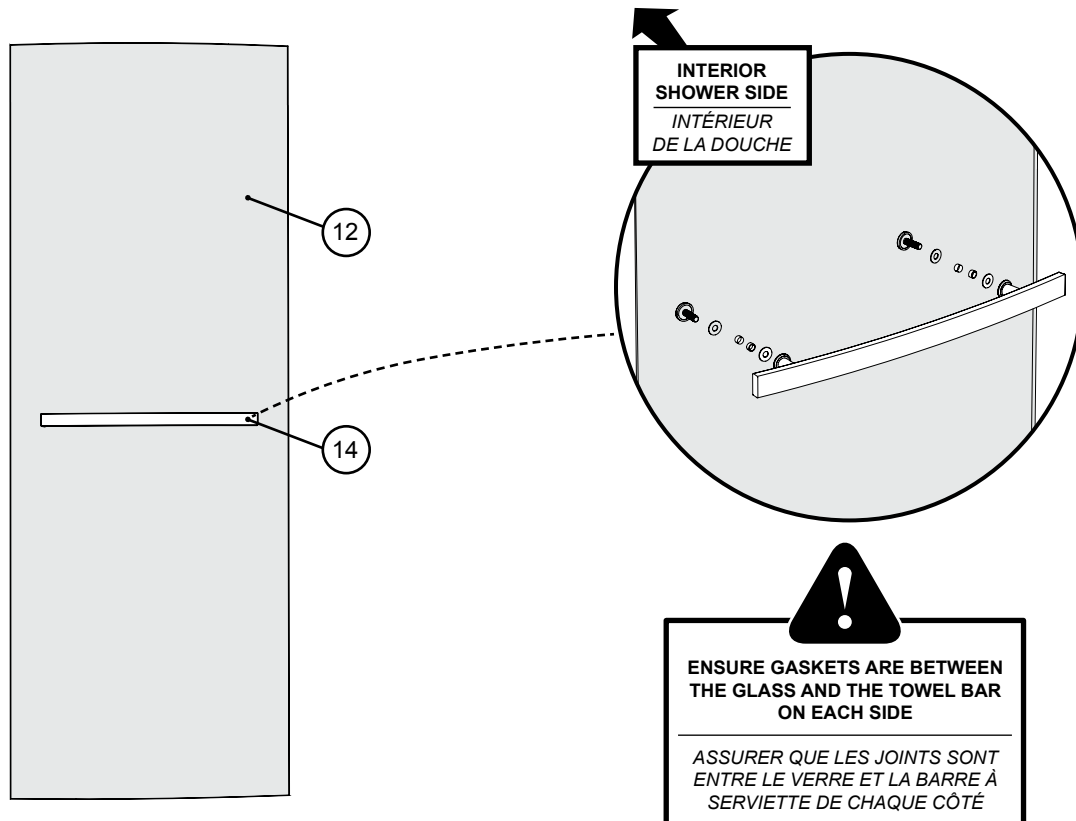
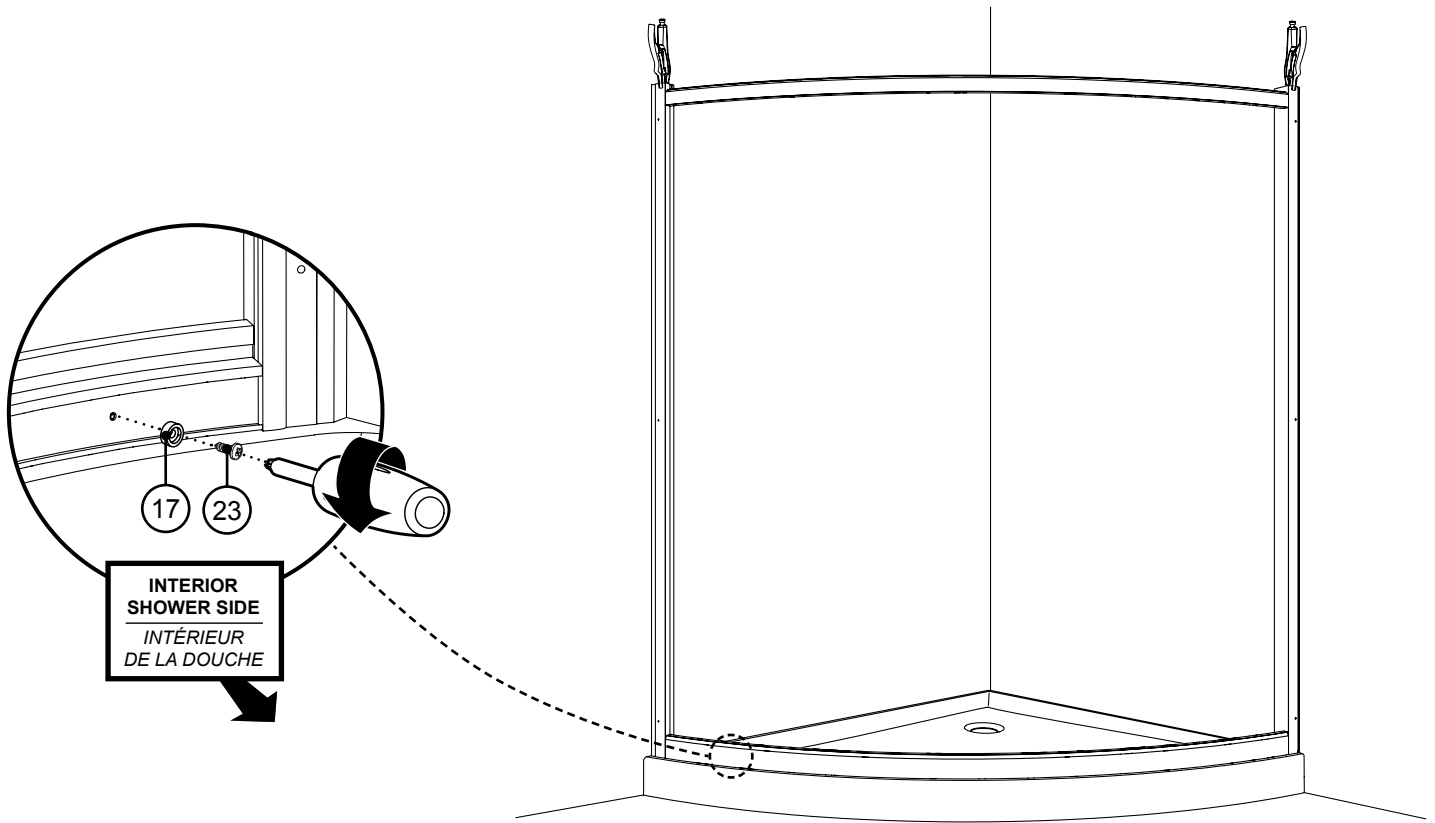


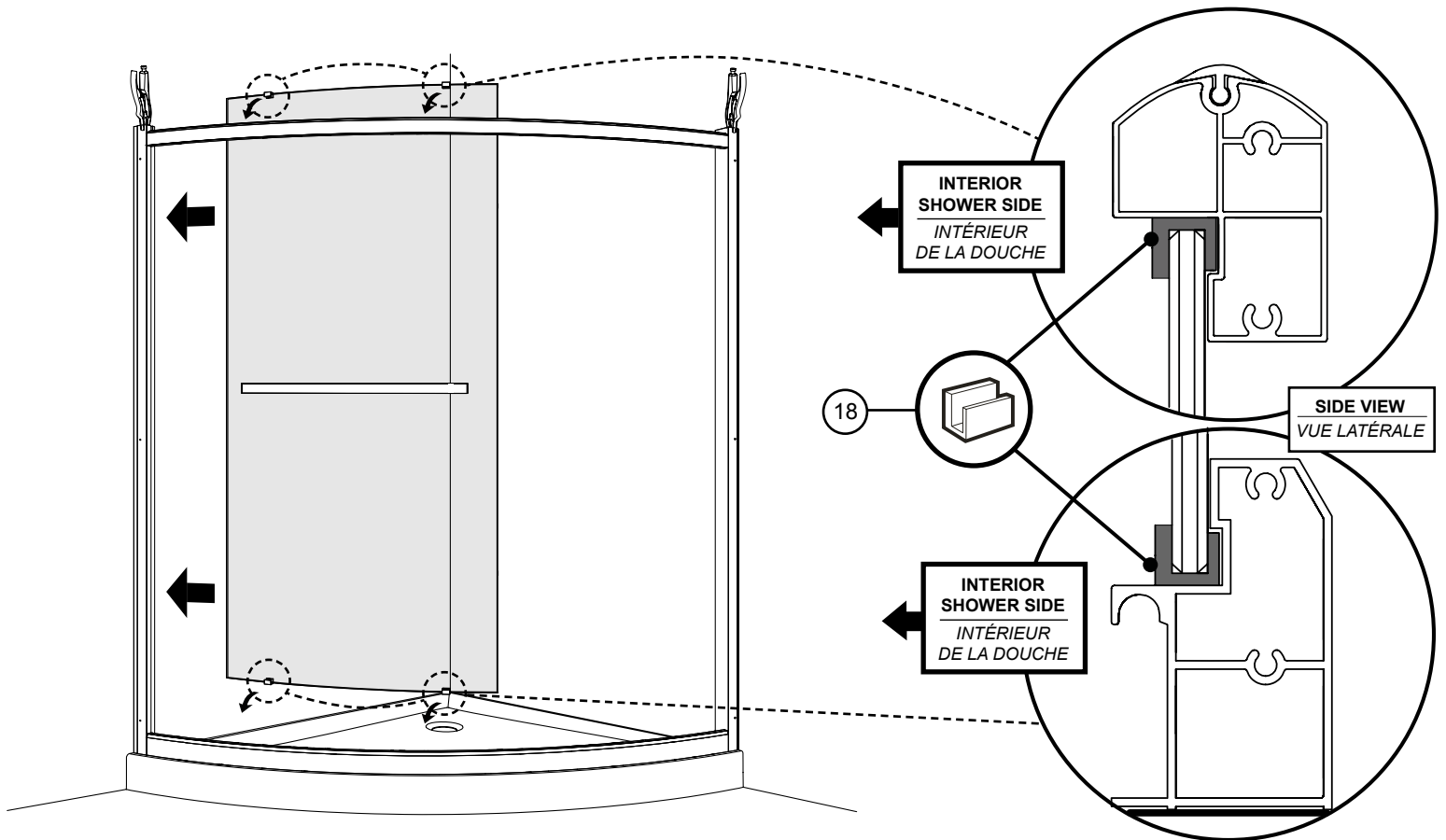
## 10 SECURE THE EXPANDER &amp; WALL JAMB WITH LOCKING PLIERS / SÉCURISER LES EXTENSEURS ET LES JAMBAGES À L'AIDE DES PINCES AUTOBLOQUANTES



**COVER THE PLIERS' TEETH BEFOREHAND TO  
AVOID SCRATCHING THE ALUMINUM PARTS**

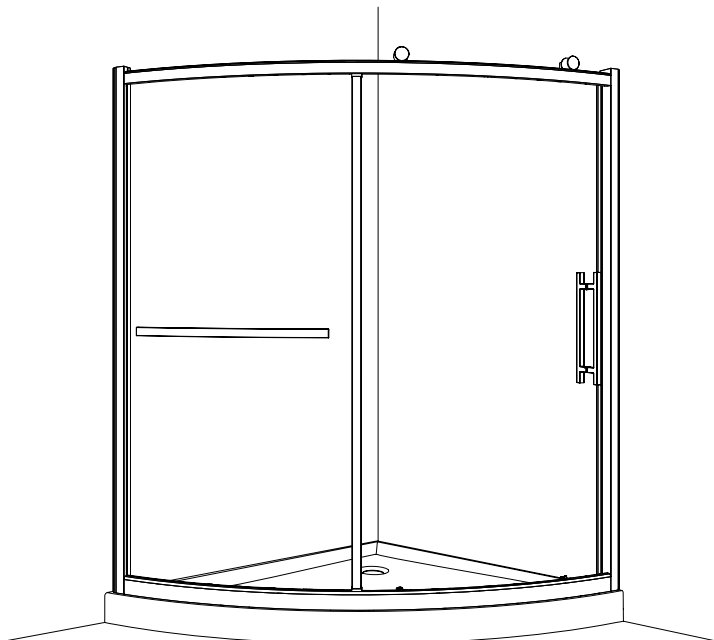
**RECOUVRIR LES DENTS DE LA PINCE AFIN DE NE  
PAS GRAFIGNER LES PIÈCES EN ALUMINIUM**



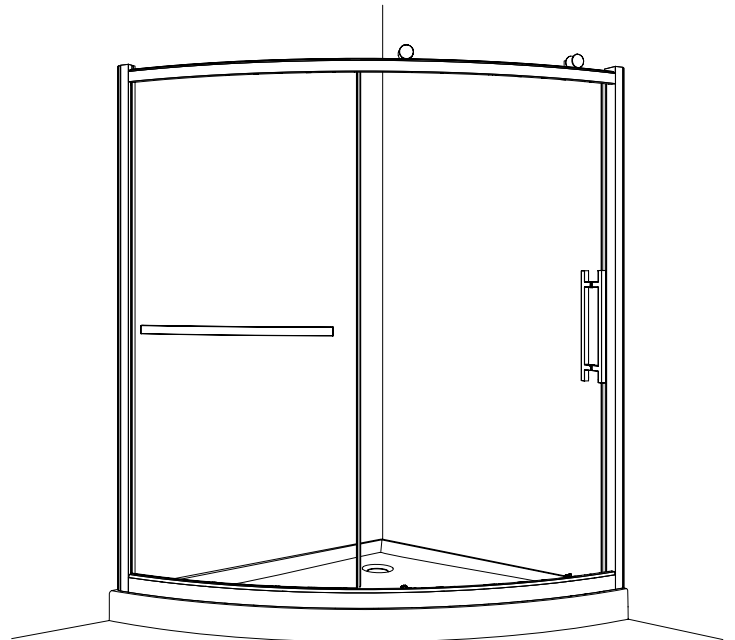


CHOOSE A MIDDLE SUPPORT OPTION / CHOISIR UNE OPTION DE SUPPORT LATÉRAL

**A: With vertical column / Avec montant vertical**



**B: Without vertical column / Sans montant vertical**

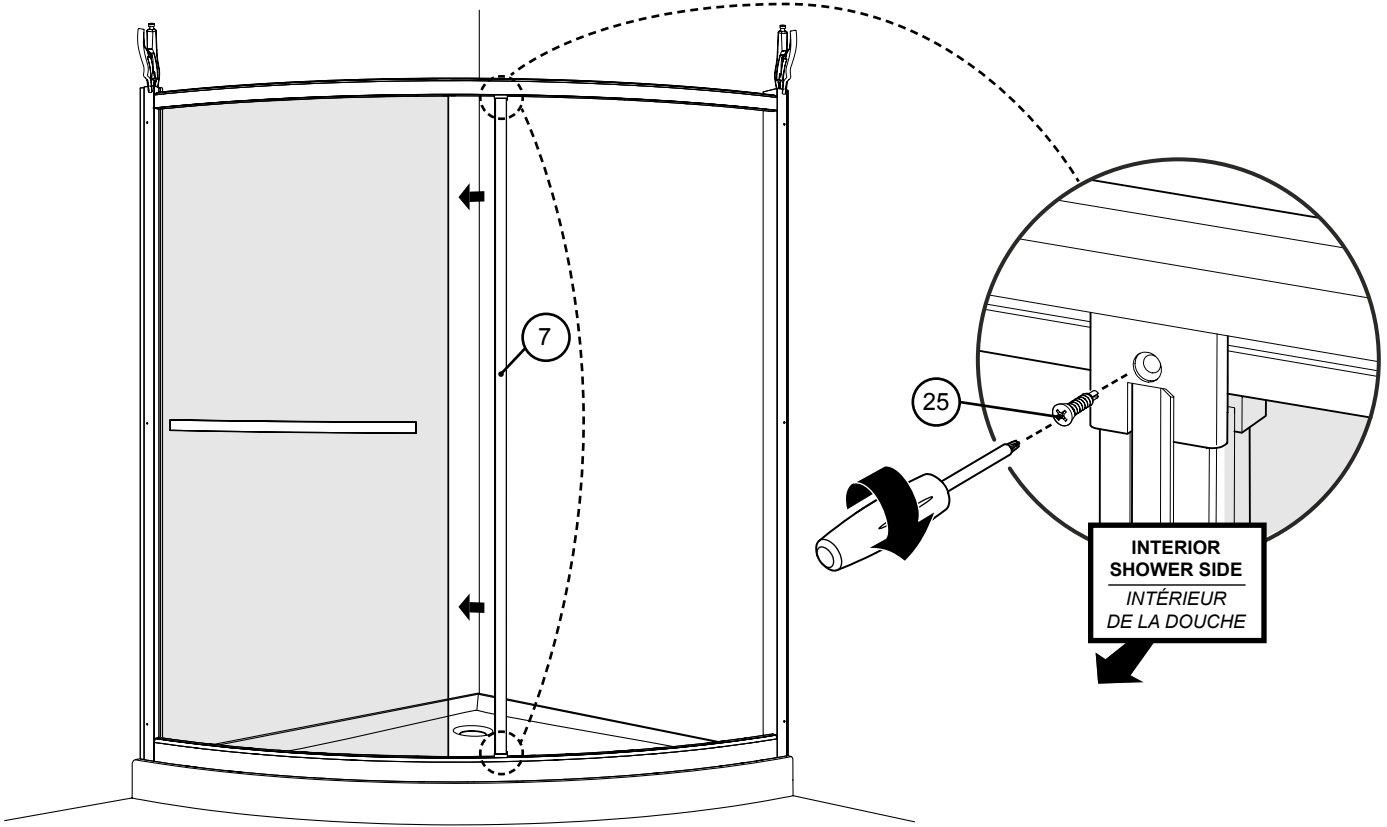


SEE STEPS 14A TO 15A THEN PROCEED WITH FOLLOWING INSTRUCTIONS  
SUIVRE LES ÉTAPES 14A À 15A ET PROCÉDER AVEC LES INSTRUCTIONS

SEE STEPS 14B TO 15B THEN PROCEED WITH FOLLOWING INSTRUCTIONS  
SUIVRE LES ÉTAPES 14B À 15B ET PROCÉDER AVEC LES INSTRUCTIONS

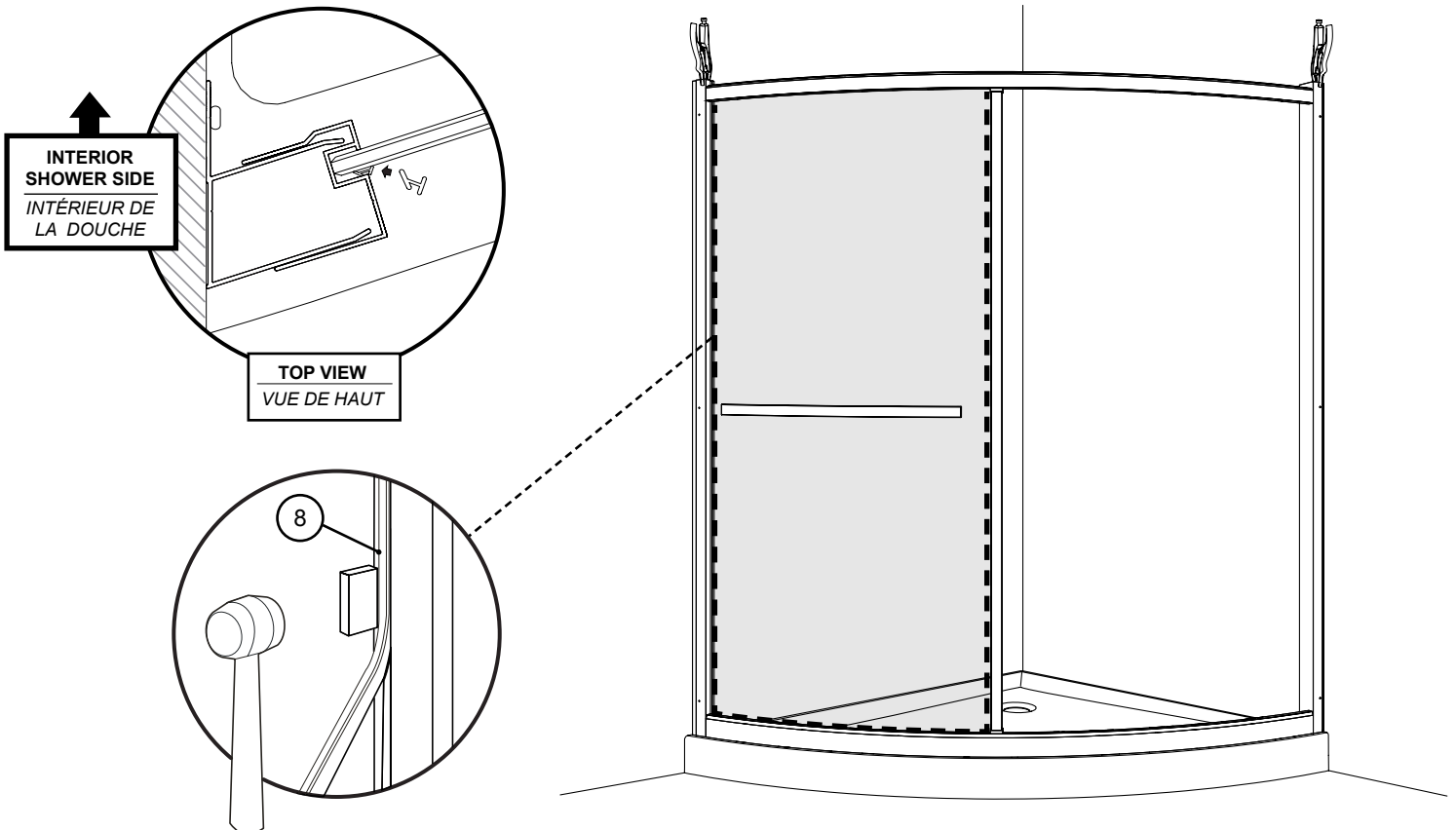
14A

SECURE THE VERTICAL COLUMN / SÉCURISER LE MONTANT VERTICAL



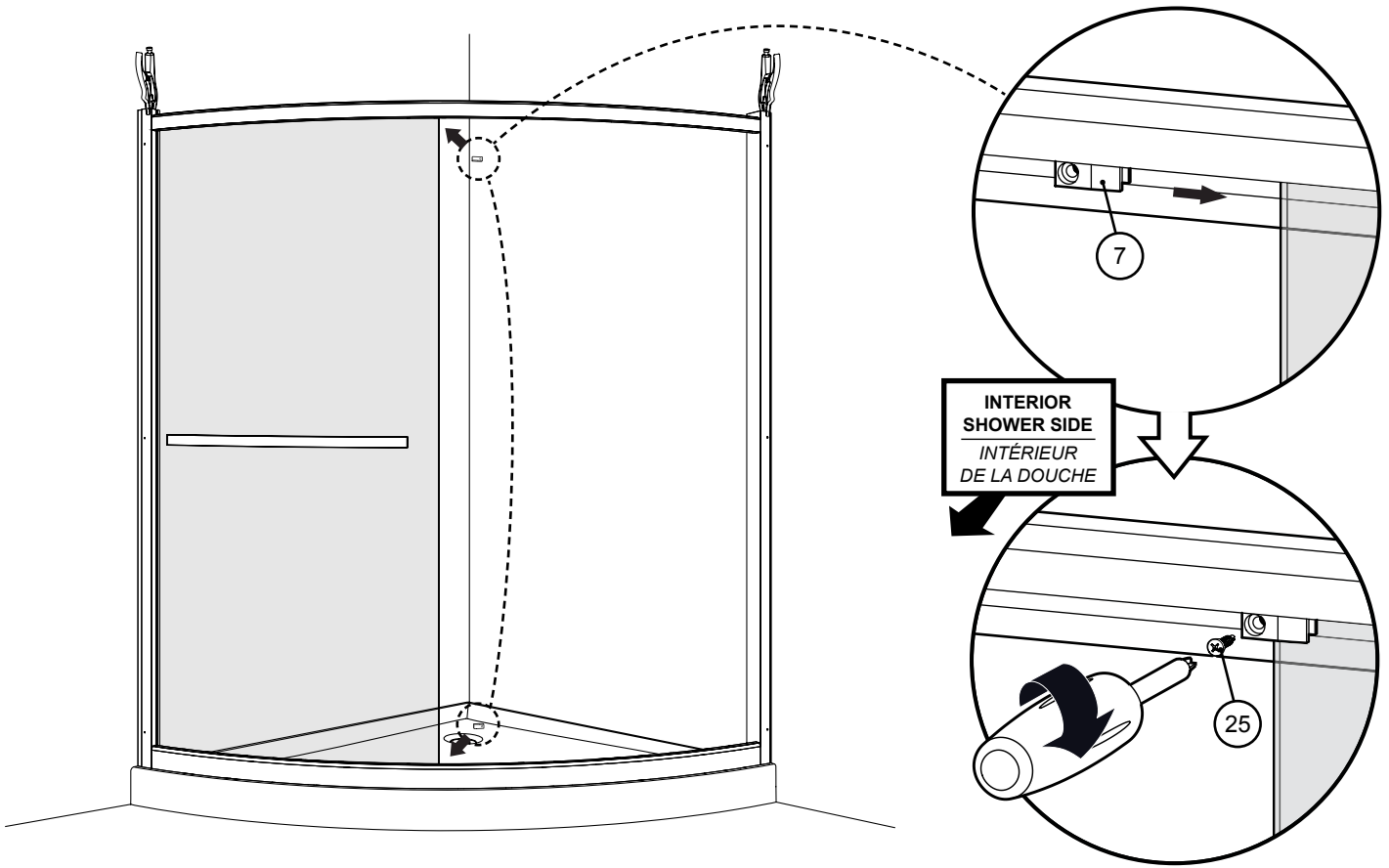
15A

INSTALL THE EXTERIOR GASKET / INSTALLER LE JOINT EXTÉRIEUR



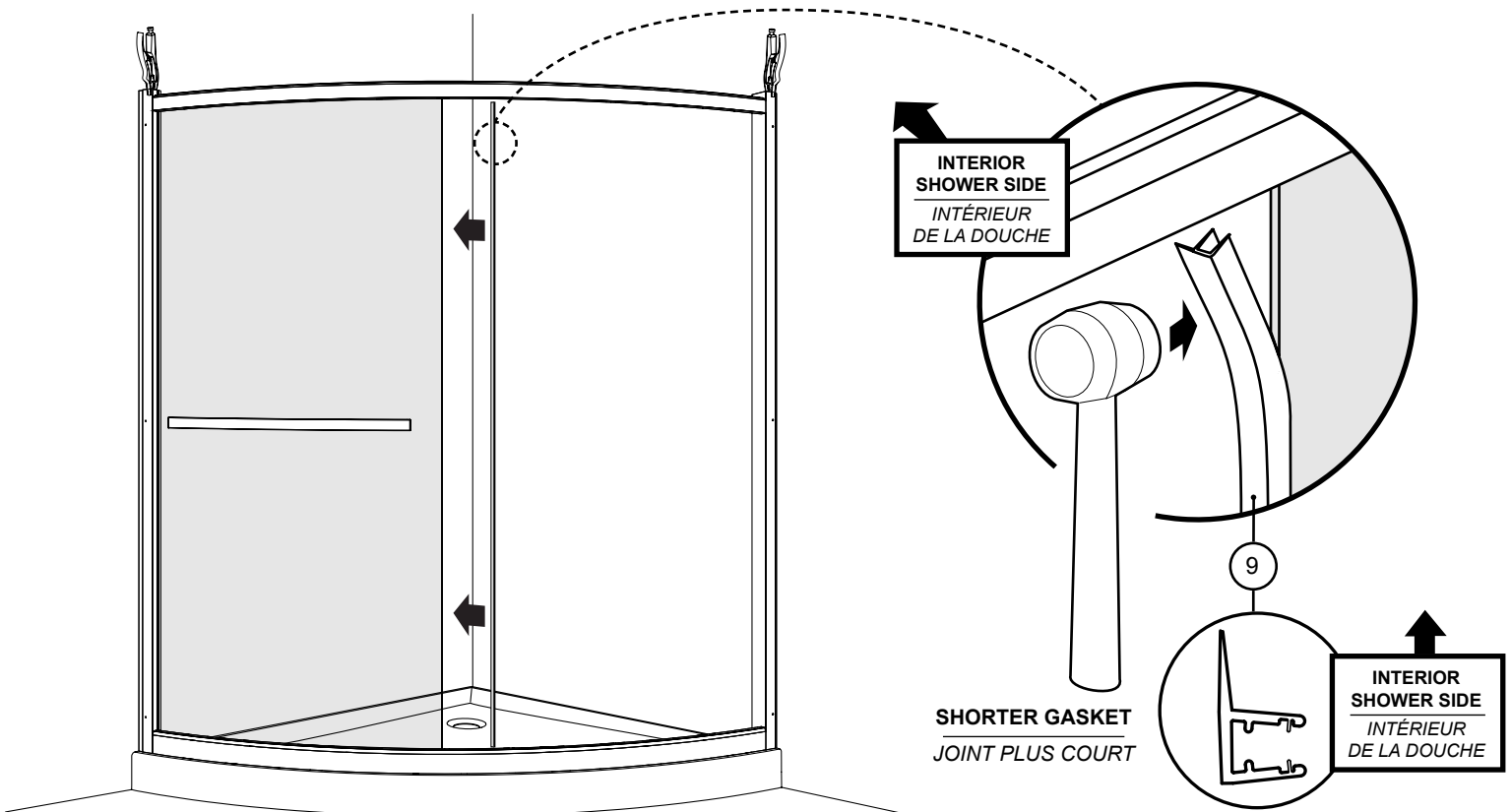
14B

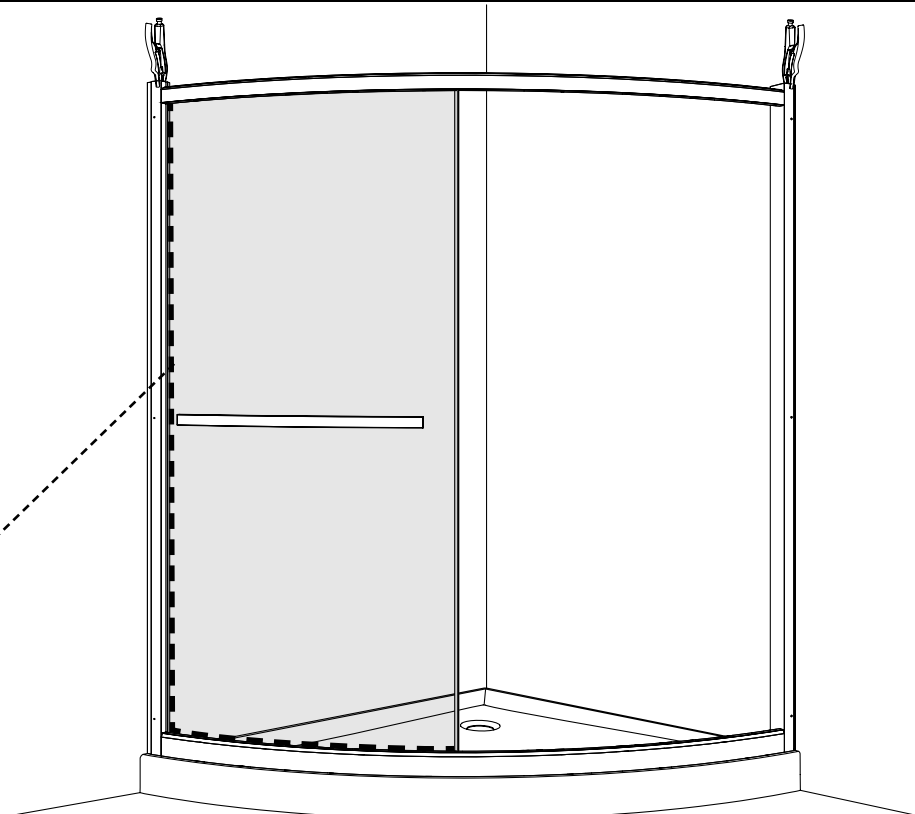
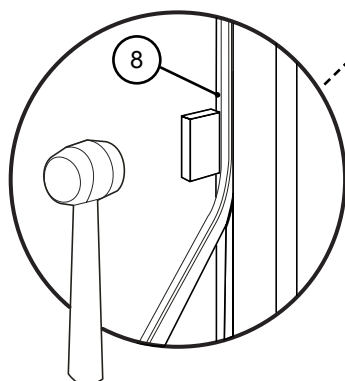
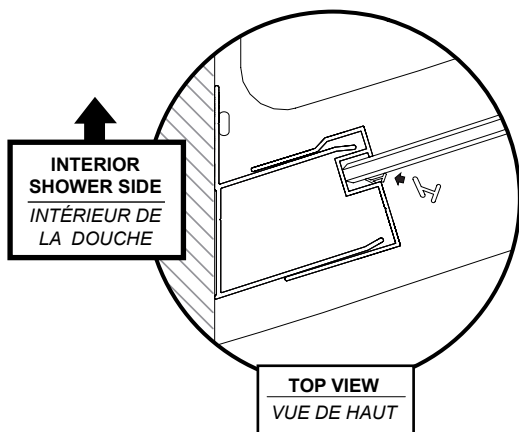
INSTALL THE GLASS FASTENERS / INSTALLER LES FIXATIONS DE VERRE



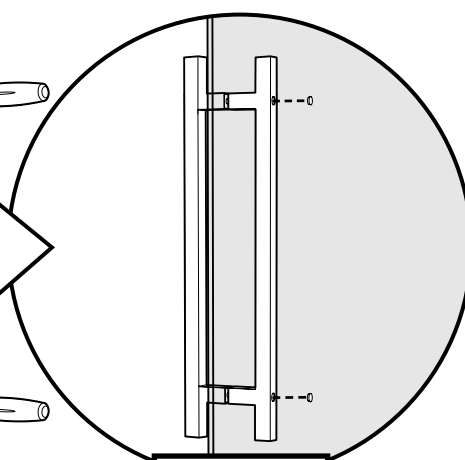
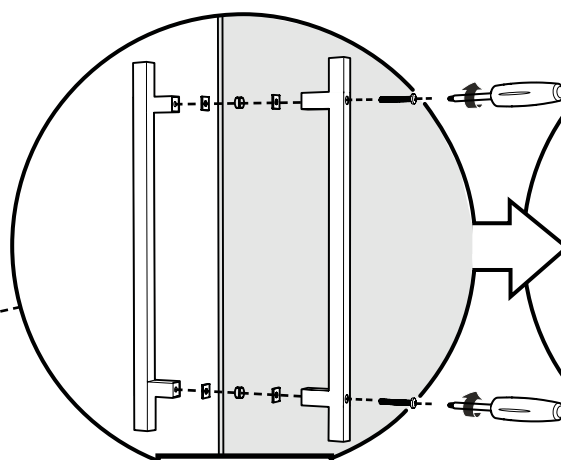
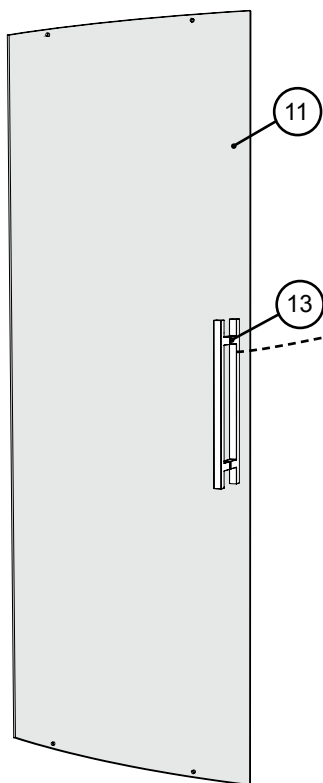
15B

INSTALL THE GASKETS / INSTALLER LES JOINTS



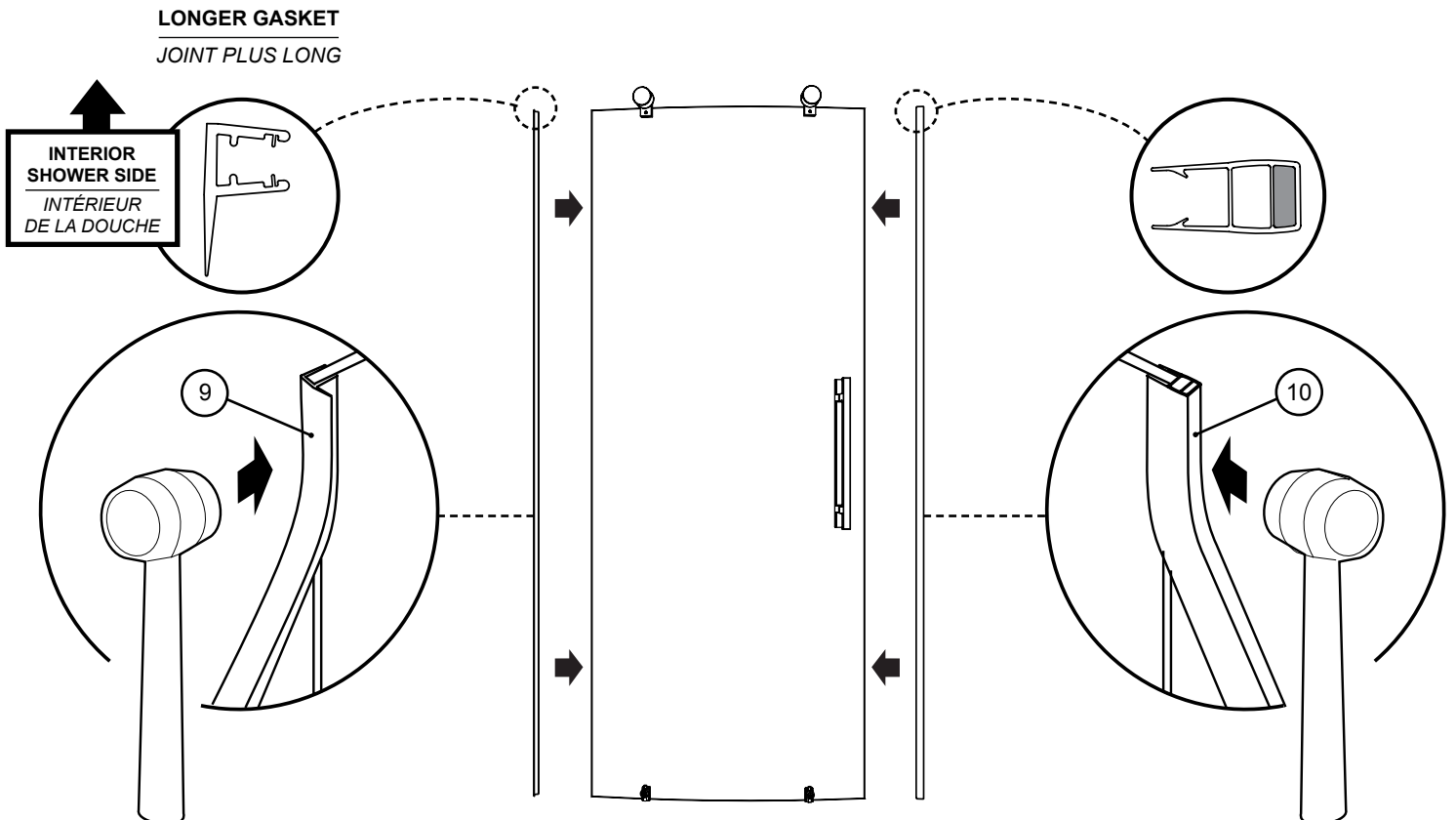
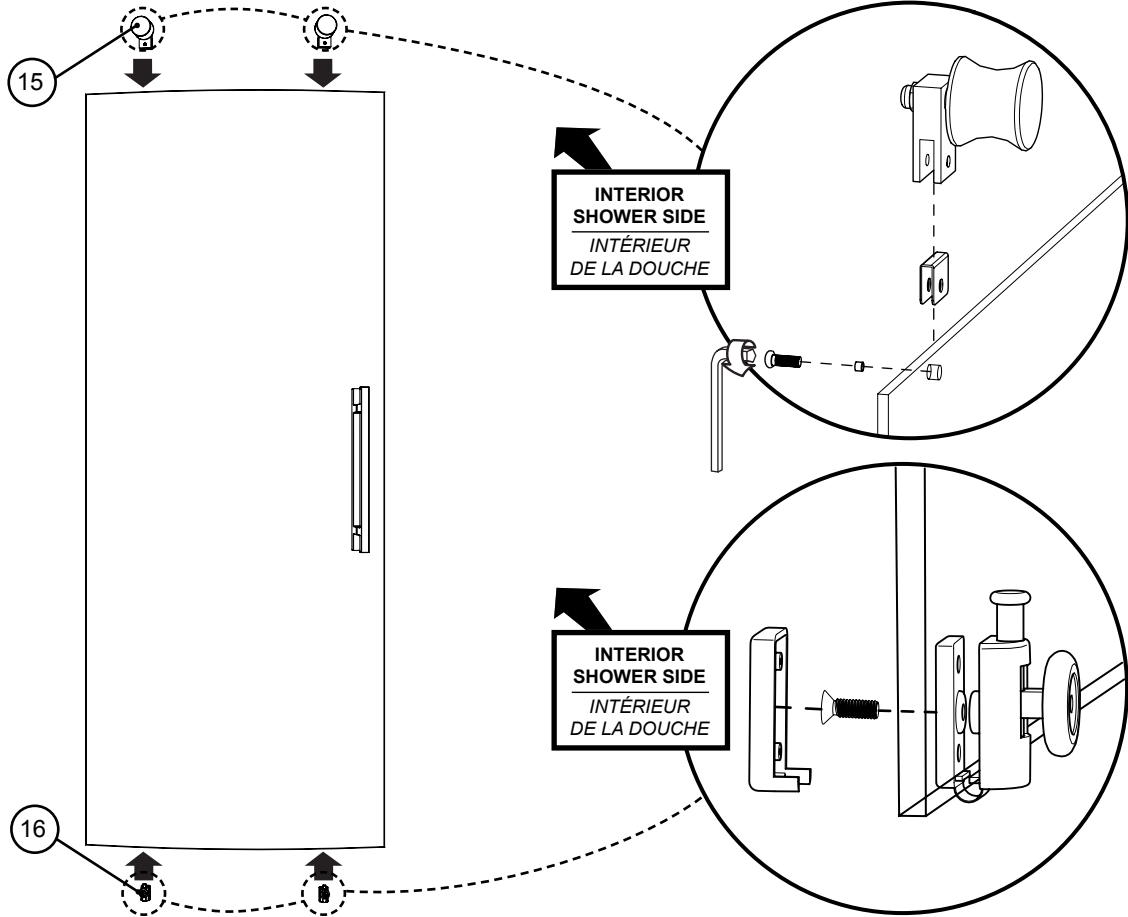


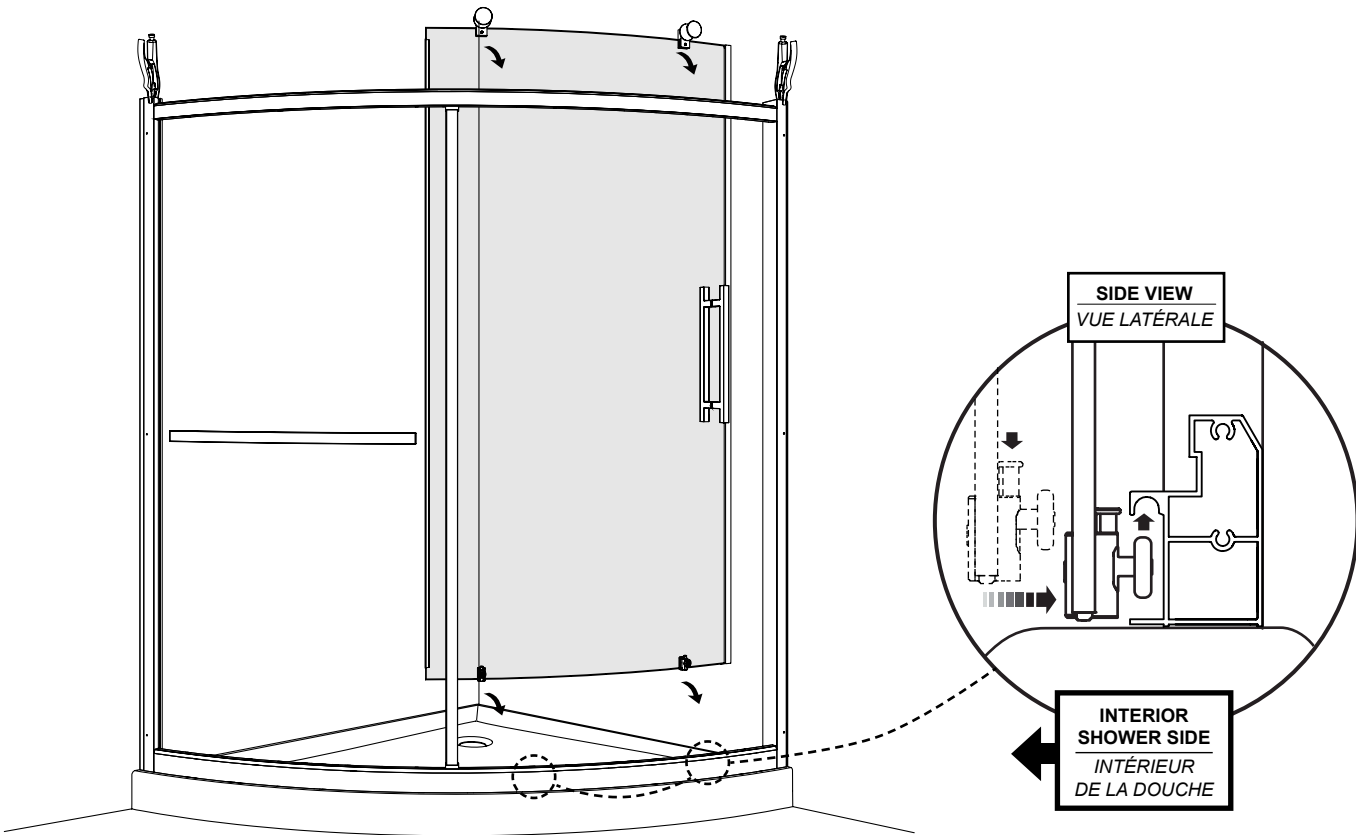
**! CUT EXCESS GASKET**  
*COUPER L'EXCÉDENT DE JOINT*



**! ENSURE GASKETS ARE BETWEEN THE GLASS AND THE HANDLE ON EACH SIDE**  
*ASSURER QUE LES JOINTS SONT ENTRE LE VERRE ET LA POIGNÉE DE CHAQUE CÔTÉ*

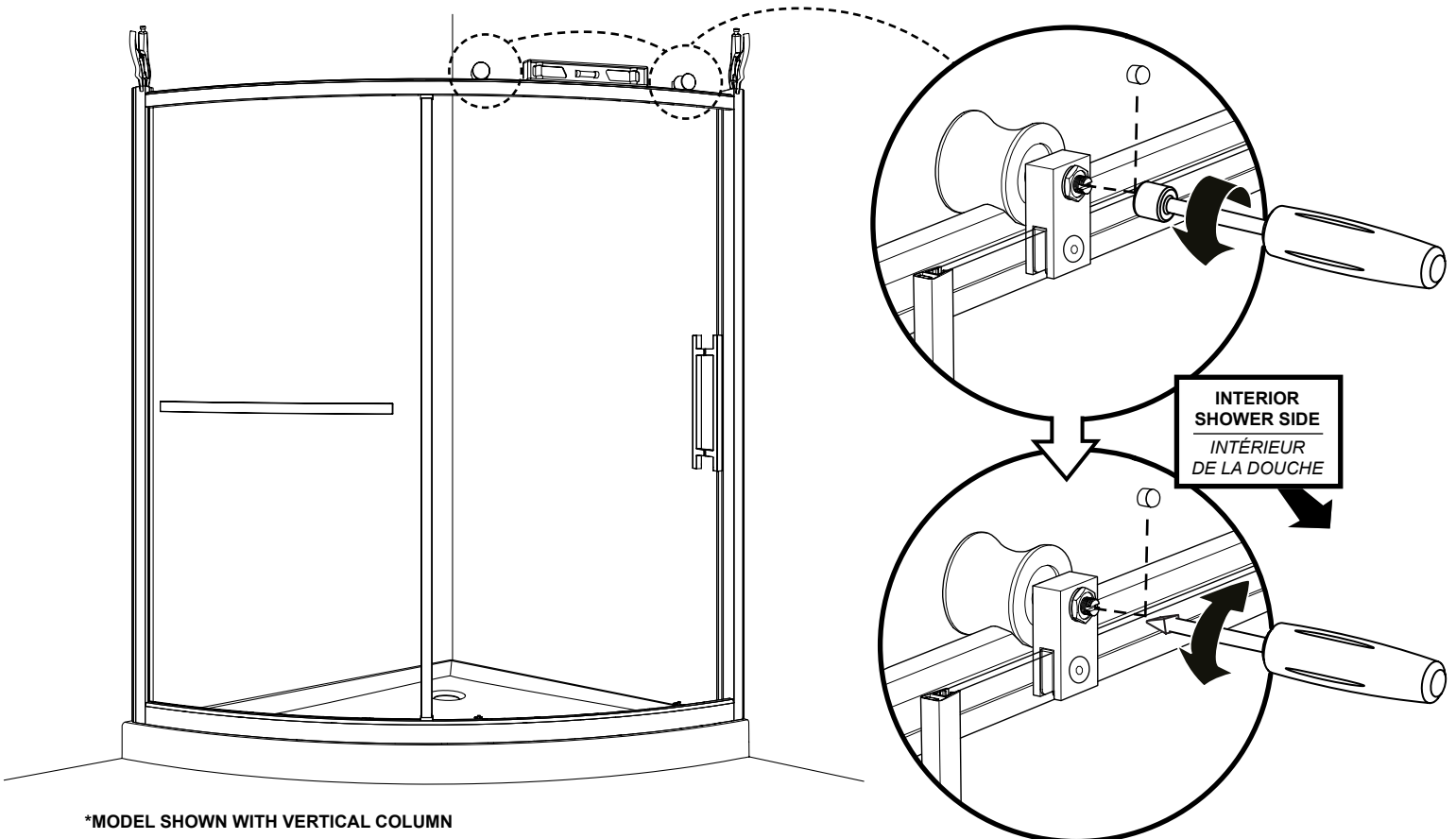






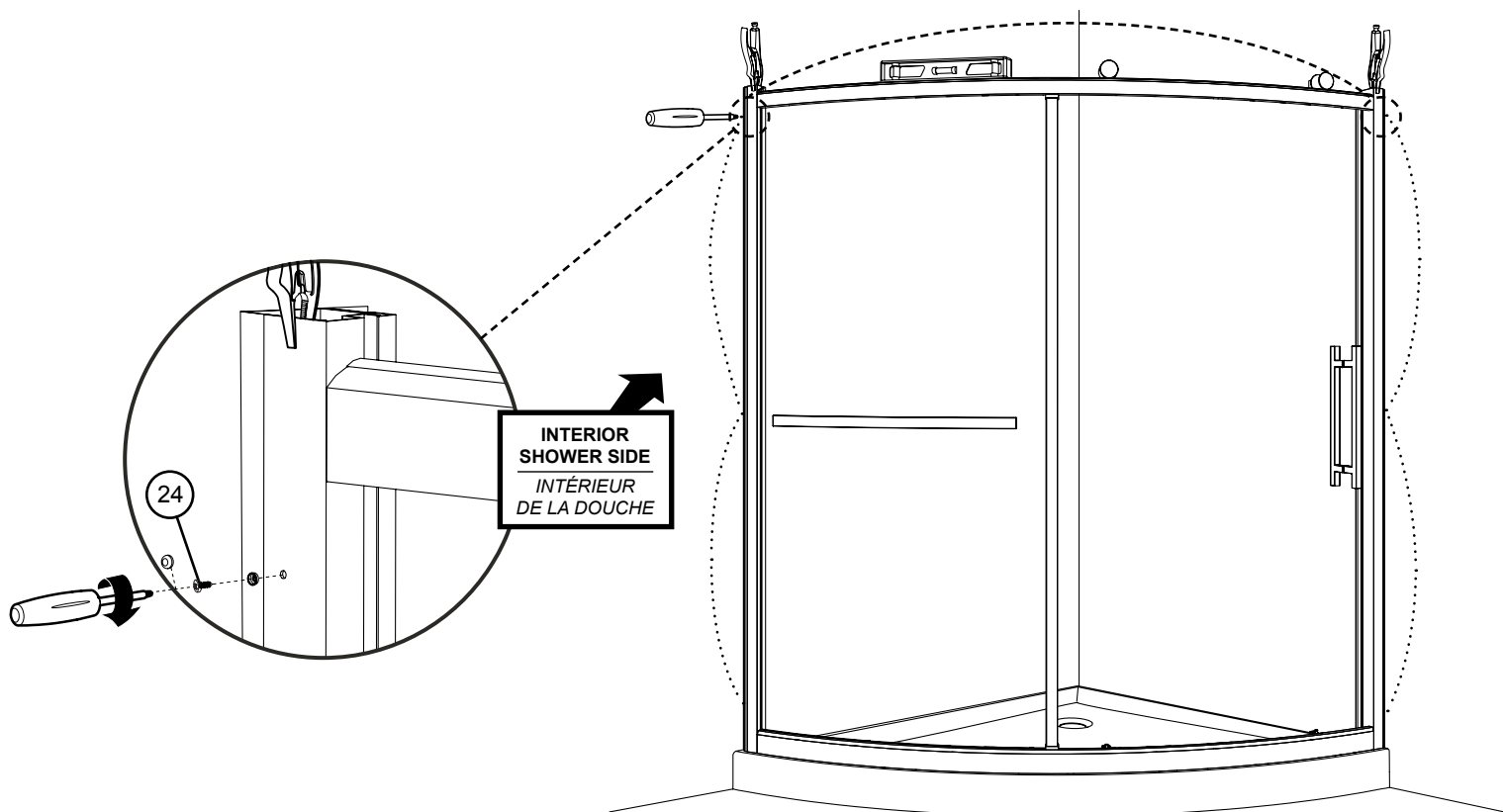
\*MODEL SHOWN WITH VERTICAL COLUMN

\*MODÈLE CI-DESSUS ILLUSTRÉ AVEC LE MONTANT VERTICAL



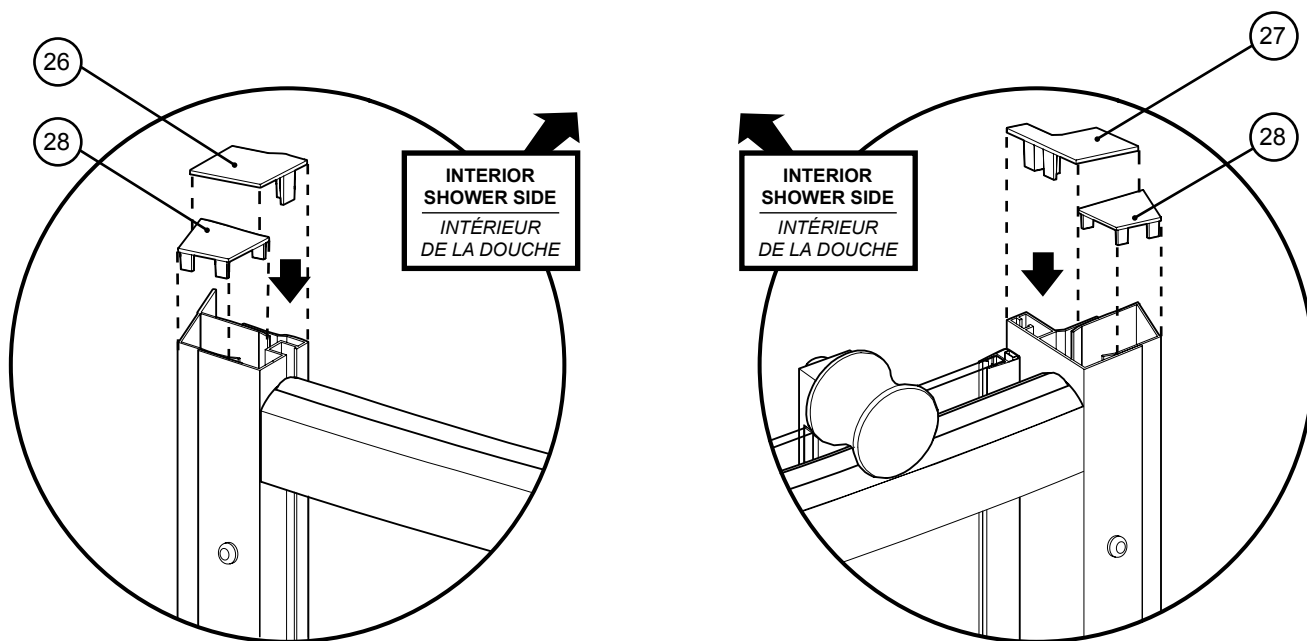
\*MODEL SHOWN WITH VERTICAL COLUMN

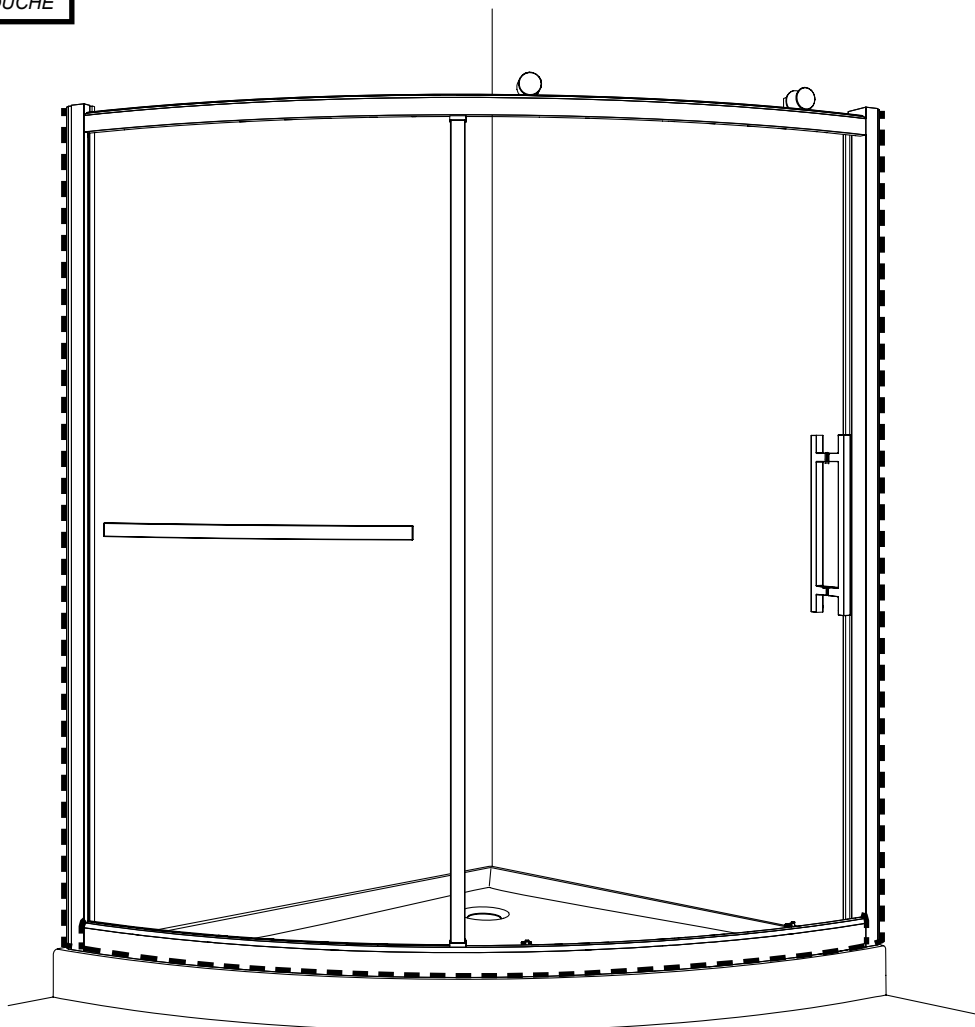
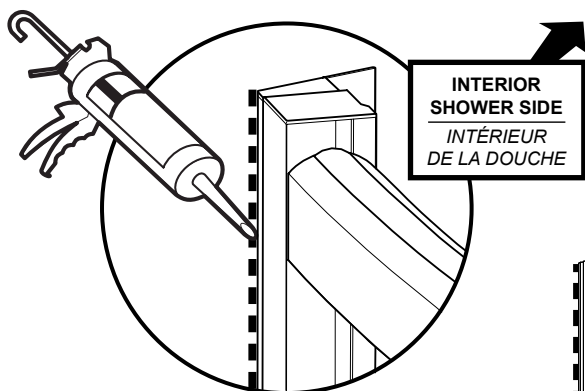
\*MODÈLE CI-DESSUS ILLUSTRÉ AVEC LE MONTANT VERTICAL



\*MODEL SHOWN WITH VERTICAL COLUMN

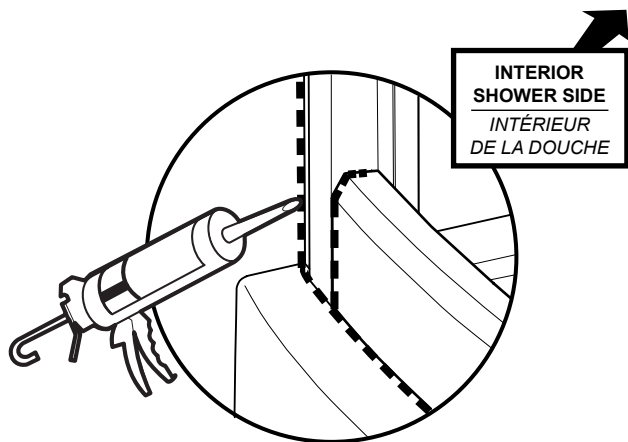
\*MODÈLE CI-DESSUS ILLUSTRÉ AVEC LE MONTANT VERTICAL





\*MODEL SHOWN WITH VERTICAL COLUMN

\*MODÈLE CI-DESSUS ILLUSTRÉ AVEC LE MONTANT VERTICAL



**24** HOURS  
HEURES