

MIRRORED CABINET with ELECTRIC OPTION

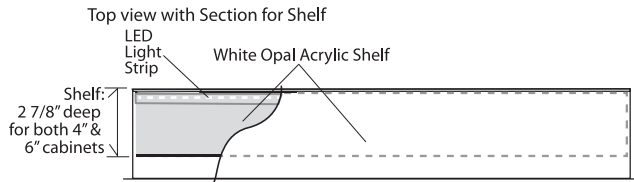
GC2436 (4" or 6" Deep)

The Electric Option is available with frameless or framed mirror cabinets. All Mirrored Cabinets with the Electric Option come with a handed door available with left or right sided hinges. (Add "EL" or "ER" to the model code.)

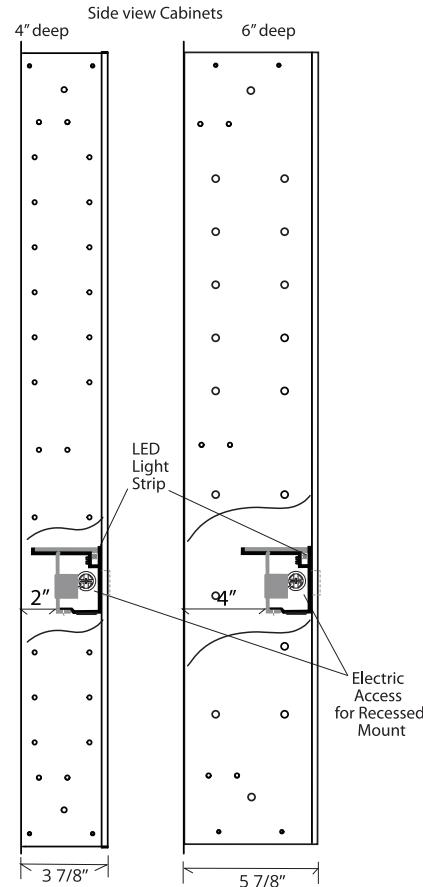
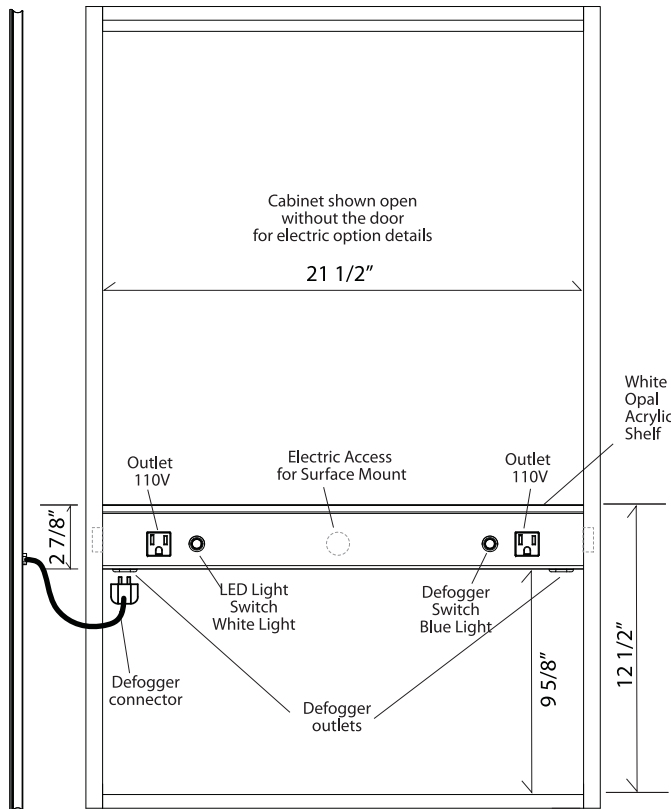
For Roughing-in Opening and Overall Dimensions, see model page for the frameless or framed cabinet design that you have selected. The Electric Option details shown here are common to all sizes and models.



GLASSCRAFTERS INC.



- Electric Option Features:**
- 2 Electrical AC Outlets
 - Integral LED Light
 - Heated Door Defogger
 - Illuminated Indicator Switches



INTEGRAL LIGHT FEATURE



SHELF with LIGHT & DEFOGGER FEATURE

All Electric Option units for all 30" and 36" height cabinets -- 16", 20" & 24" wide -- are factory installed at the same height above the cabinet base. Electric Access pull through location is also in the same position for all sizes.



All wiring should be done by a qualified licensed electrician in a manner that conforms to the National Electric Code. See installation instructions for additional information.

Pending ETL Listing. Patent Pending

GLASSCRAFTERS, INC.
193 Veterans Blvd. Carlstadt, NJ 07072
1+(800) 233-7362 (F) 1+(888) 233-7362
info@glasscraftersinc.com

Products That Reflect Your Style