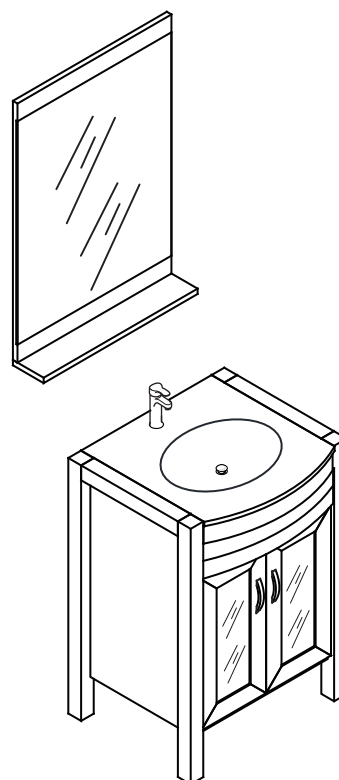
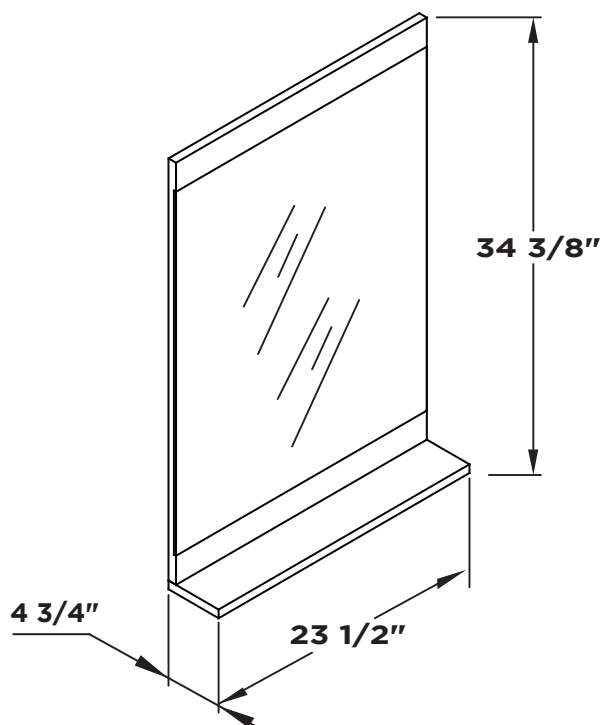




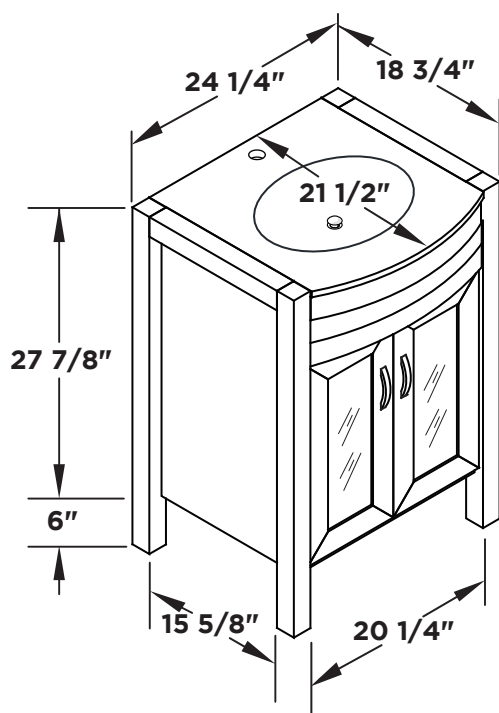
FVN5124ES
INFINITO
INSTALLATION GUIDE



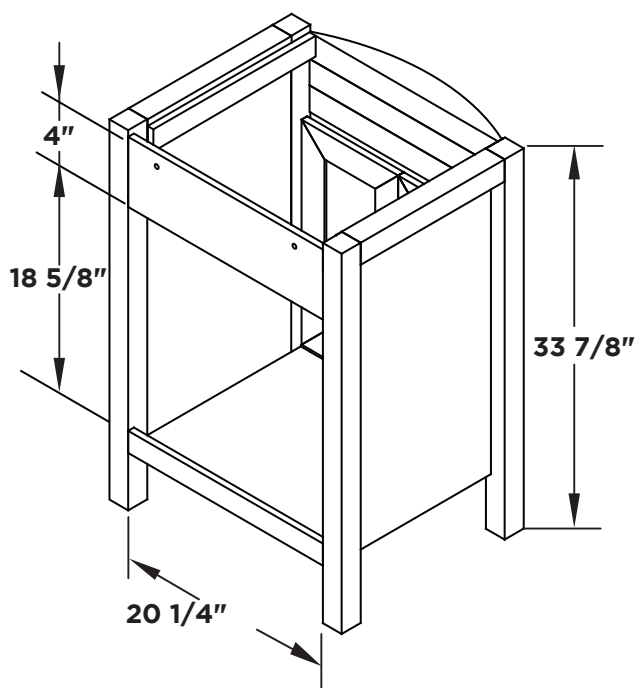
Mirror



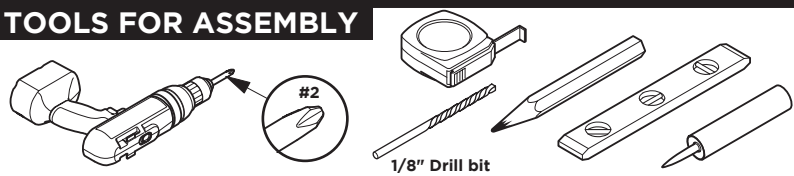
Vanity Front



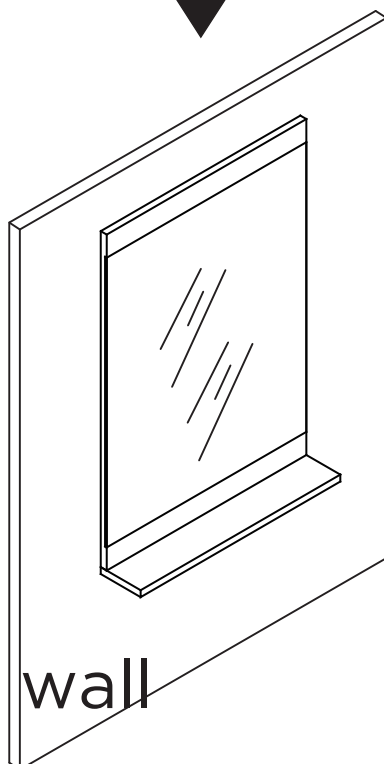
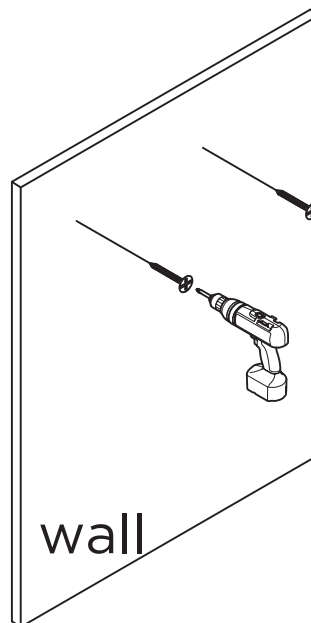
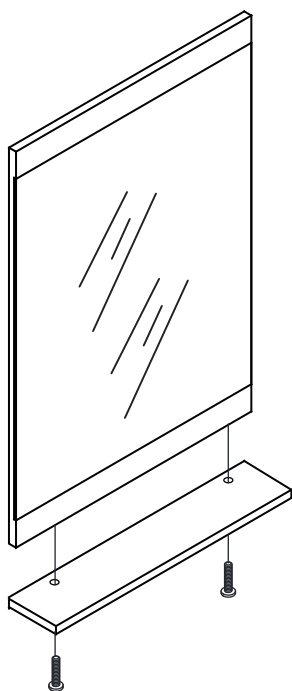
Vanity Back



TOOLS FOR ASSEMBLY



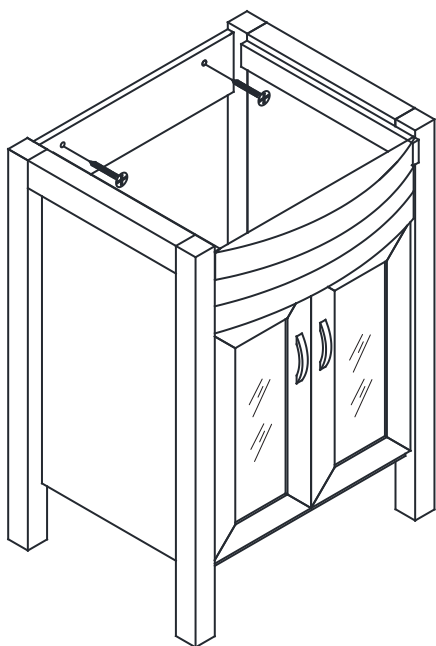
MIRROR INSTALLATION



1

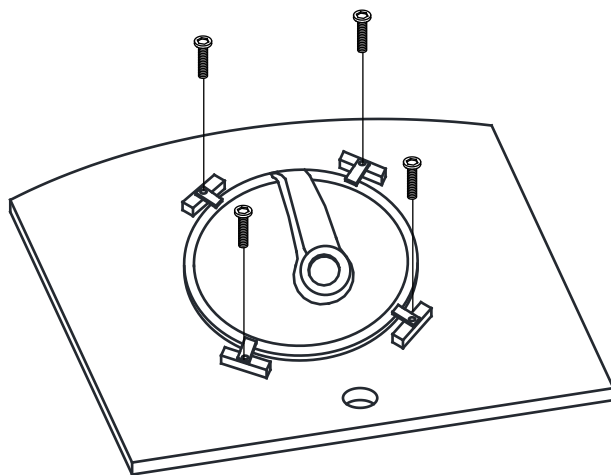
Open the door

IMPORTANT: Consult an expert for the proper screws/bolts to use when attaching to various wall constructions. Screws provided do not attach to all wall construction types.



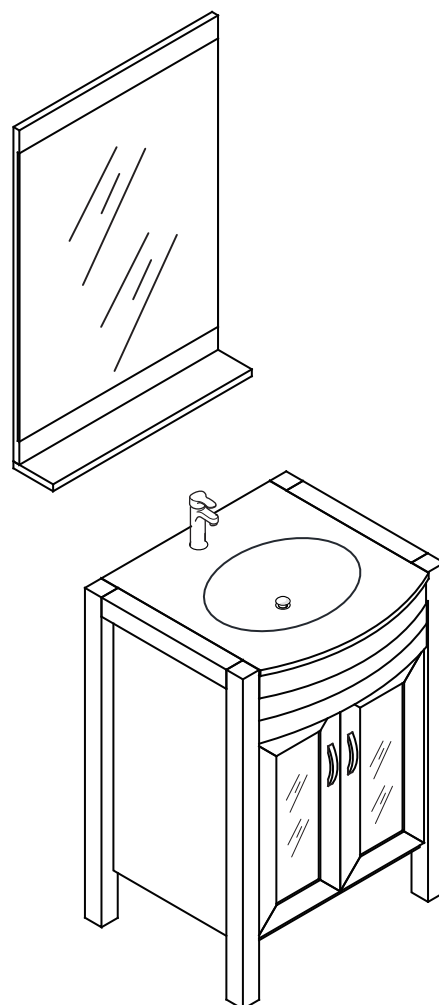
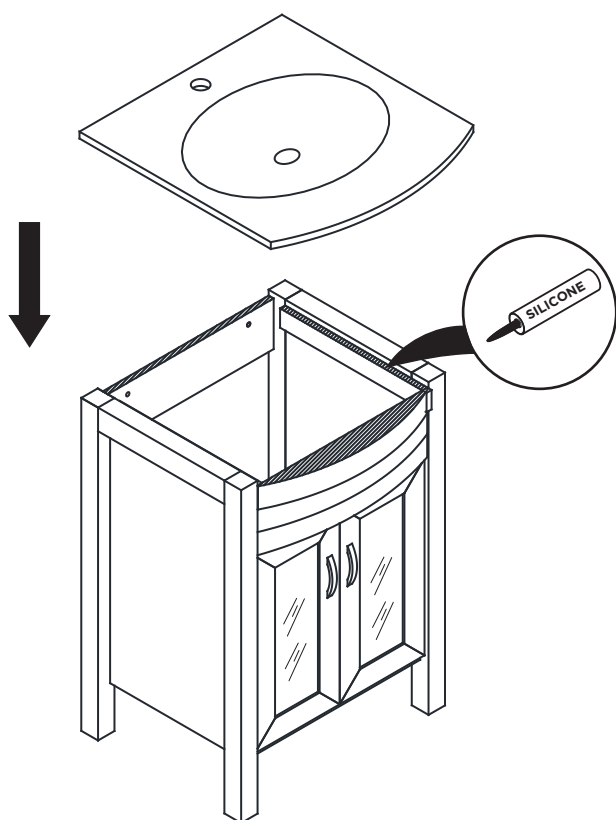
2

Install sink



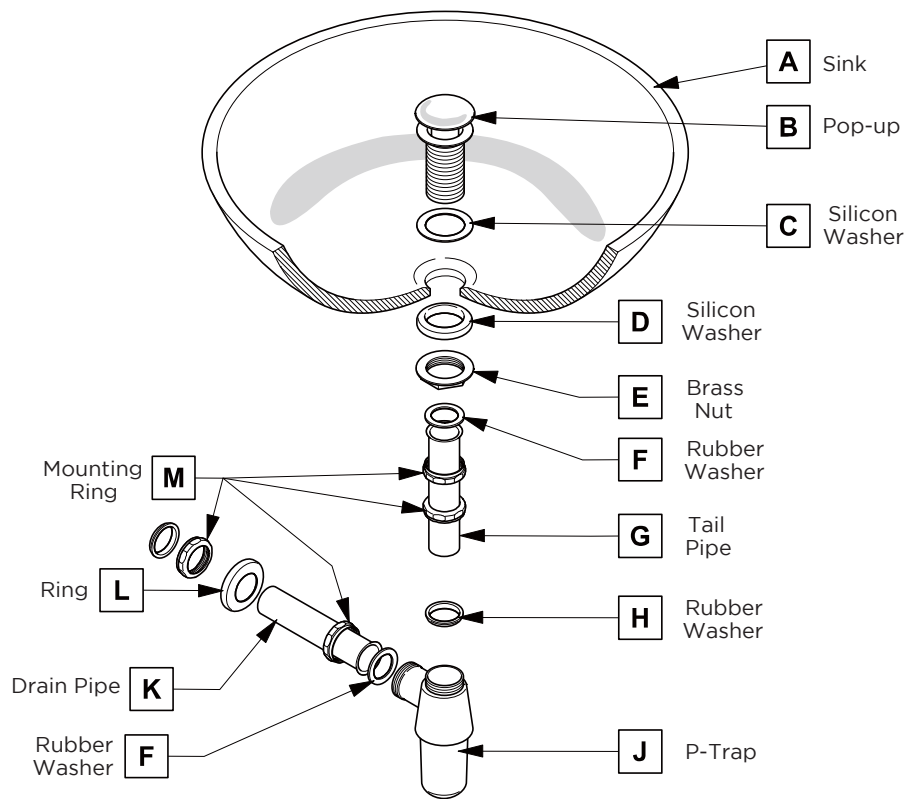
3

Install top panel



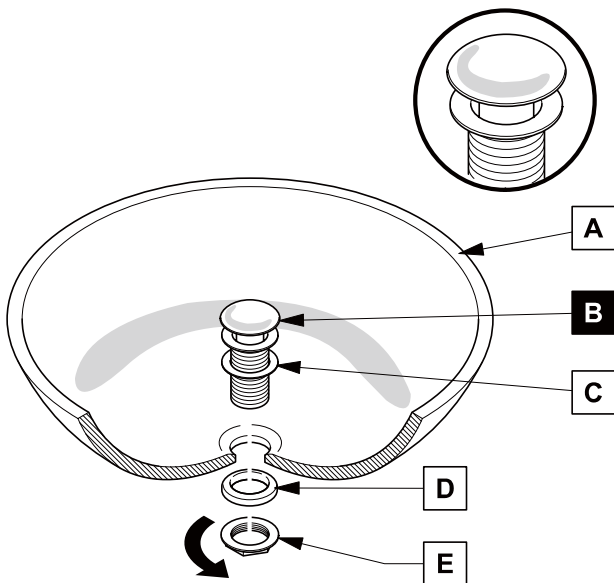
P-TRAP AND POP-UP INSTALLATION INSTRUCTIONS

Your item may appear slightly different from the illustration



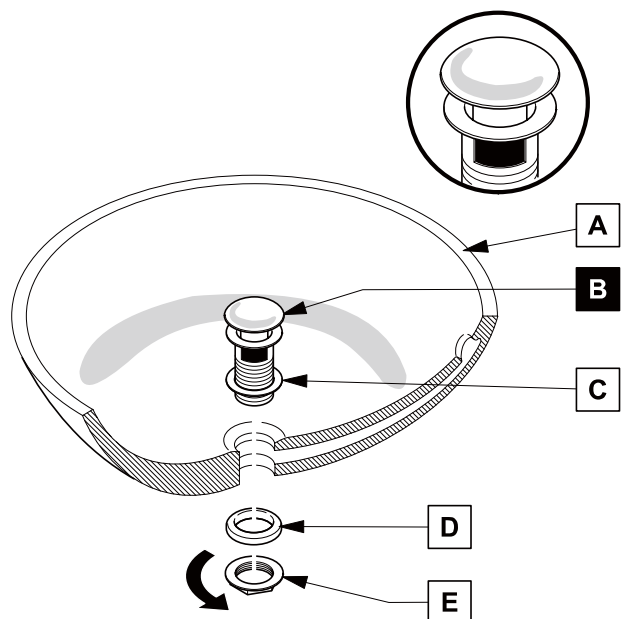
POP-UP INSTALLATION

FOR SINKS WITHOUT OVERFLOW



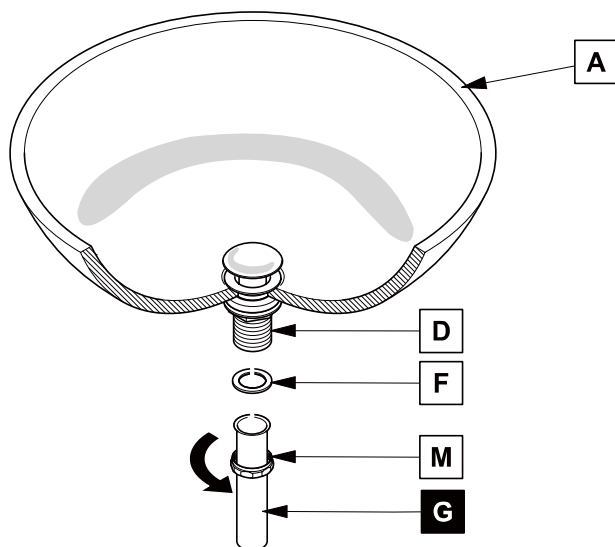
OR

FOR SINKS WITH OVERFLOW



P-TRAP INSTALLATION

Install tail pipe (G)



Install p-trap (J)

