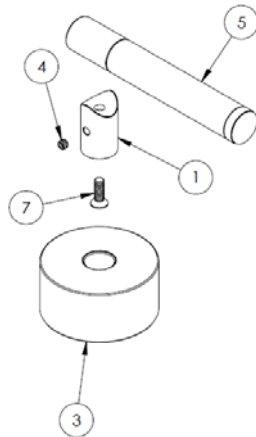
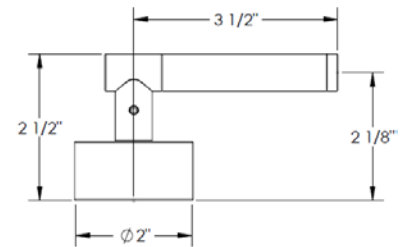


HANDLE TRIMS

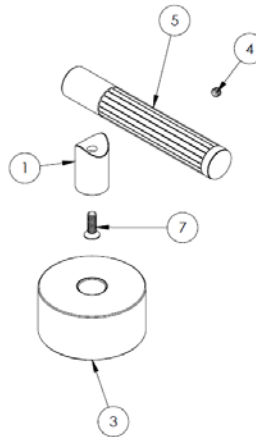
Hudson (Code: N2)



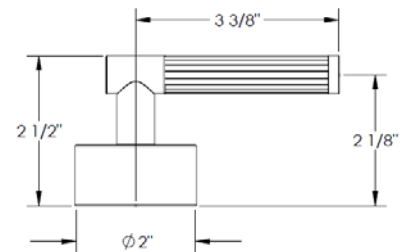
ITEM NO.	PART NUMBER	QTY.
1	N2-POST	1
3	N2-ESC	1
4	SSCUPSKT 0.164-32x0.125-HX-S	1
5	N2-LVR-INSRT	1
7	CR-FHMS 0.164-32x0.5x0.5-S	1



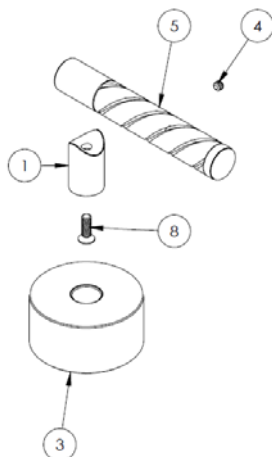
Seine (Code: N3)



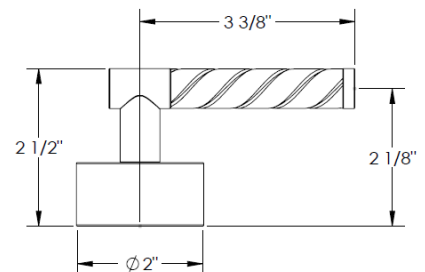
ITEM NO.	PART NUMBER	QTY.
1	N2-POST	1
3	N2-ESC	1
4	SSCUPSKT 0.164-32x0.125-HX-S	1
5	N3-LVR-INSRT	1
7	CR-FHMS 0.164-32x0.5x0.5-S	1



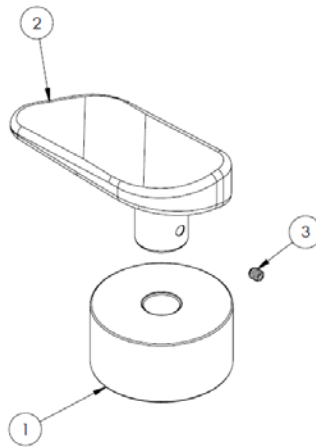
Mississippi (Code: N4)



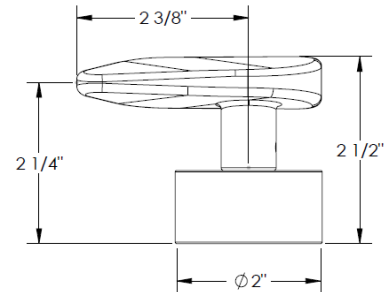
ITEM NO.	PART NUMBER	QTY.
1	N2-POST	1
3	N2-ESC	1
4	SSCUPSKT 0.164-32x0.125-HX-S	1
5	N4-LVR-INSRT	1
8	CR-FHMS 0.164-32x0.5x0.5-S	1



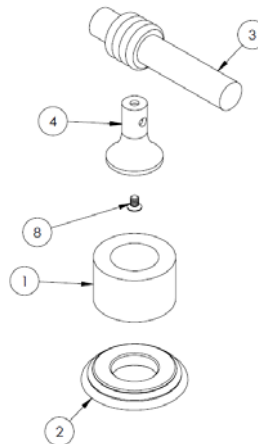
Thames (Code: N5)



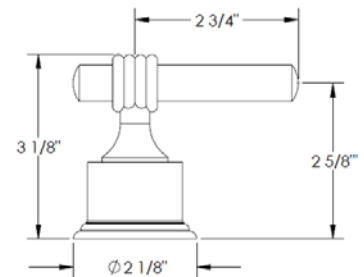
ITEM NO.	PART NUMBER	QTY.
1	N2-ESC	1
2	N5-LVR-(HOT/COLD)	1
3	SSCUPSKT 0.164-32x0.1875-HX-S	1



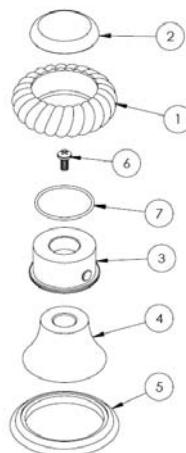
Tigris (Code: W)



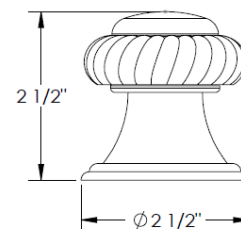
ITEM NO.	PART NUMBER	QTY.
1	W-ESC	1
2	W-ESC-RING	1
3	W-LVR	1
4	W-POST	1
8	CR-FHM1 0.164-32x0.25x0.25-S	1



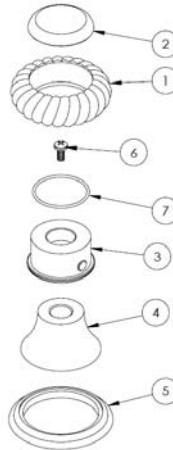
Yangtze (Code: XJ)



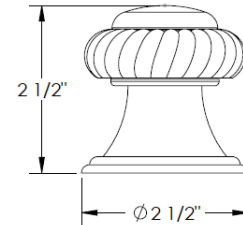
ITEM NO.	PART NUMBER	QTY.
1	XJ-CRSTL-KNOB-RING	1
2	XJ-KNOB-CAP	1
3	XJ-POST	1
4	XJ-ESC	1
5	U5-ESC-RING	1
6	CR-PHMS 0.164-32x0.375x0.375-S	1
7	AS568 - 026	1



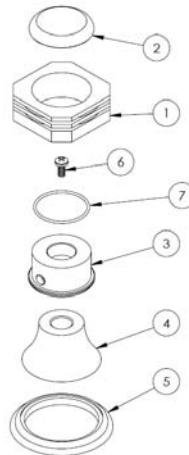
Amazon (Code: XK)



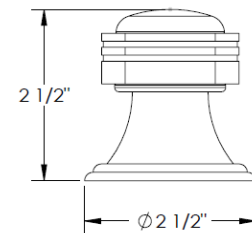
ITEM NO.	PART NUMBER	QTY.
1	XK-FRSTD-CRSTL-KNOB-RING	1
2	XJ-KNOB-CAP	1
3	XJ-POST	1
4	XJ-ESC	1
5	U5-ESC-RING	1
6	CR-PHMS 0.164-32x0.375x0.375-S	1
7	AS568 - 026	1



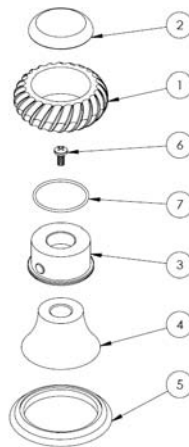
Mackenzoe (Code: XM)



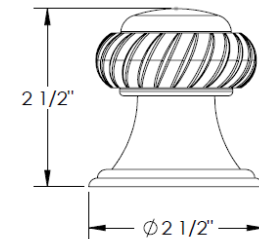
ITEM NO.	PART NUMBER	QTY.
1	XM-KNOB-RING	1
2	XJ-KNOB-CAP	1
3	XJ-POST	1
4	XJ-ESC	1
5	U5-ESC-RING	1
6	CR-PHMS 0.164-32x0.375x0.375-S	1
7	AS568 - 026	1



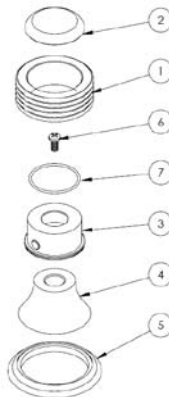
Volga (Code: XN)



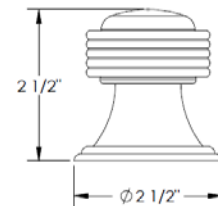
ITEM NO.	PART NUMBER	QTY.
1	XN-KNOB-RING	1
2	XJ-KNOB-CAP	1
3	XJ-POST	1
4	XJ-ESC	1
5	U5-ESC-RING	1
6	CR-PHMS 0.164-32x0.375x0.375-S	1
7	AS568 - 026	1



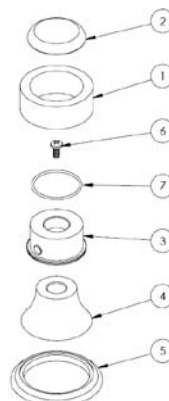
Rhine (Code: XO)



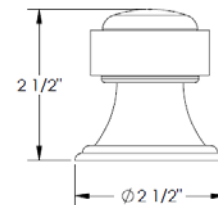
ITEM NO.	PART NUMBER	QTY.
1	XO-KNOB-RING	1
2	XJ-KNOB-CAP	1
3	XJ-POST	1
4	XJ-ESC	1
5	U5-ESC-RING	1
6	CR-PHMS 0.164-32x0.375x0.375-S	1
7	AS568 - 026	1



Nile (Code: XQ)



ITEM NO.	PART NUMBER	QTY.
1	XQ-KNOB-RING	1
2	XJ-KNOB-CAP	1
3	XJ-POST	1
4	XJ-ESC	1
5	U5-ESC-RING	1
6	CR-PHMS 0.164-32x0.375x0.375-S	1
7	AS568 - 026	1



Specification from Finished Wall to Tip of Broach Stem

HANDLE TRIM #	MEASUREMENT (IN.)
N2/ N3/ N4	2 1/4
N5	1/2
W/ XJ/ XK/ XM/ XN/ XO/ XQ	2

Note: When fitting handle it may be necessary to shorten broach stem and/or threaded nipple to eliminate gap between handle and escutcheon

IMPORTANT INSTALLATION INFORMATION

- USE TEFLON TAPE OR PIPE SEALANT FOR THREADED CONNECTIONS
- DO NOT USE PLUMBER'S PUTTY ON ANY OF THE BRASS COMPONENTS
This will cause the finish to tarnish and void the warranty. A non-corrosive Alkoxy Silicone is recommended.
- DURING SWEATING OF LINES DO NOT OVERHEAT CASTING
Overheating may cause damage to internal mechanism
- COPPER ADAPTORS MAY BE REQUIRED TO COMPLETE YOUR INSTALLATION

For technical support, please call 718-257-2800