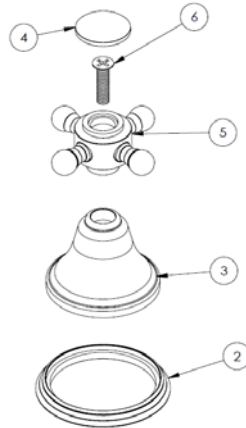
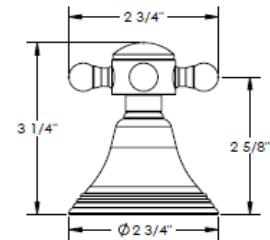


HANDLE TRIMS

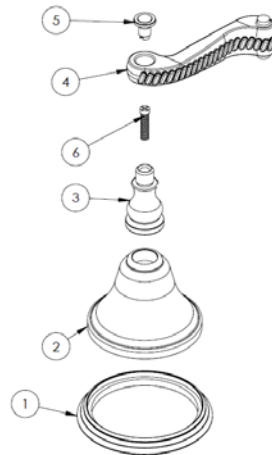
Los Angeles (Code: AX)



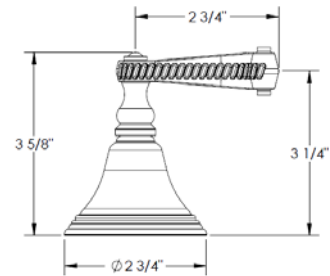
ITEM NO.	PART NUMBER	QTY.
2	A-ESC-RING	1
3	A-ESC	1
4	SA2-POST-CAP	1
5	X-POST	1
6	CR-FHM1 0.25-20x1x1-S	1



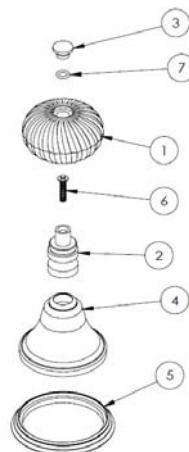
Tampa (Code: G)



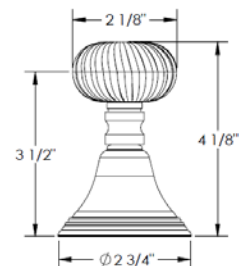
ITEM NO.	PART NUMBER	QTY.
1	A-ESC-RING	1
2	A-ESC	1
3	F-POST	1
4	G-LVR	1
5	F-POST-CAP	1
6	F-POST-SCRW	1



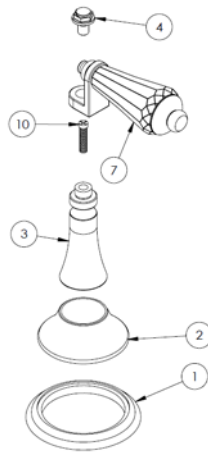
Las Vegas (Code: H)



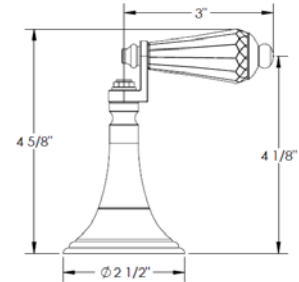
ITEM NO.	PART NUMBER	QTY.
1	H-KNOB	1
2	H-POST	1
3	H-CAP	1
4	A-ESC	1
5	A-ESC-RING	1
6	CR-FHM1 0.164-32x0.75x0.75-S	1
7	AS568 - 010	1



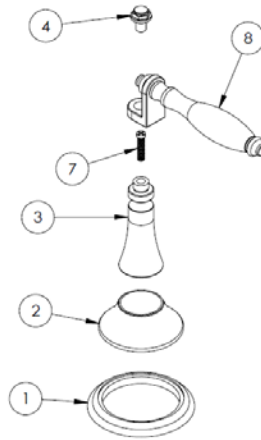
Diamond (Code: U3)



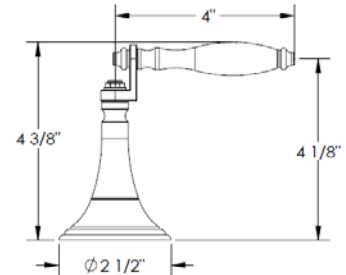
ITEM NO.	PART NUMBER	QTY.
1	U5-ESC-RING	1
2	U5-ESC	1
3	U5-POST	1
4	U5-POST-CAP	1
7	SW-CRSTL-LVR-INSRT	1
10	F-POST-SCRW	1



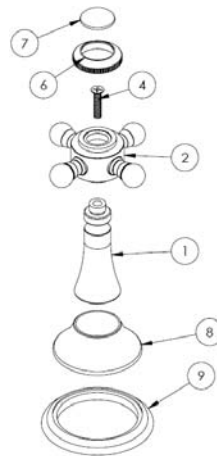
Emporium (Code: U5)



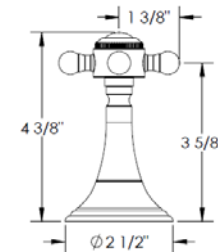
ITEM NO.	PART NUMBER	QTY.
1	U5-ESC-RING	1
2	U5-ESC	1
3	U5-POST	1
4	U5-POST-CAP	1
7	F-POST-SCRW	1
8	U5-LVR-INSRT	1



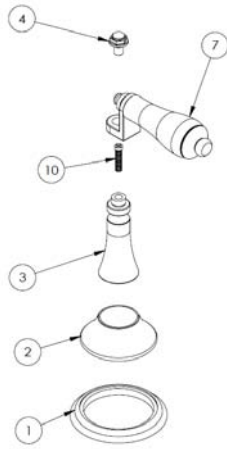
Povincial (Code: U6)



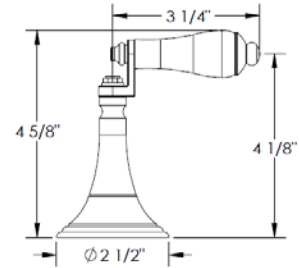
ITEM NO.	PART NUMBER	QTY.
1	U5-POST	1
2	V-POST	1
4	CR-FHM1 0.164-32x0.75x0.75-S	1
6	X-CAP-RING	1
7	X-PRCLN-INSRT-PLN	1
8	U5-ESC	1
9	U5-ESC-RING	1



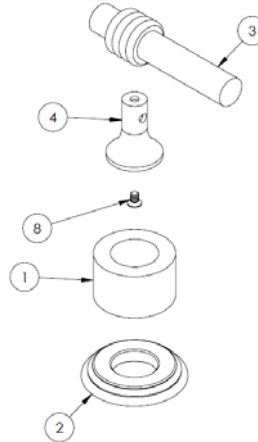
Regal (Code: U7)



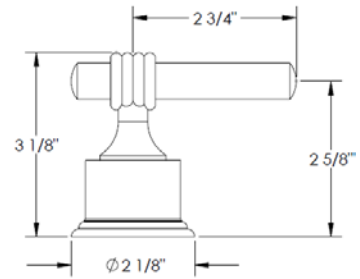
ITEM NO.	PART NUMBER	QTY.
1	U5-ESC-RING	1
2	U5-ESC	1
3	U5-POST	1
4	U5-POST-CAP	1
7	S3-PRCLN-LVR-INSRT	1
10	F-POST-SCRW	1



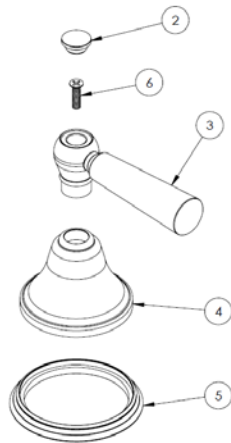
Tigris (Code: W)



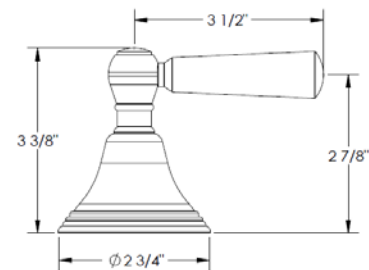
ITEM NO.	PART NUMBER	QTY.
1	W-ESC	1
2	W-ESC-RING	1
3	W-LVR	1
4	W-POST	1
8	CR-FHM1 0.164-32x0.25x0.25-S	1



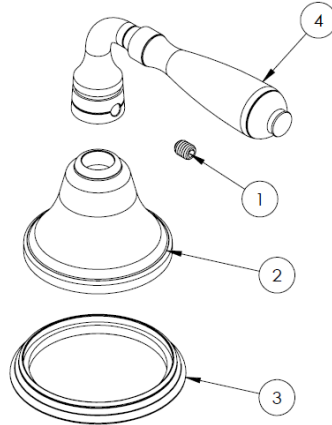
Boston (Code: WW)



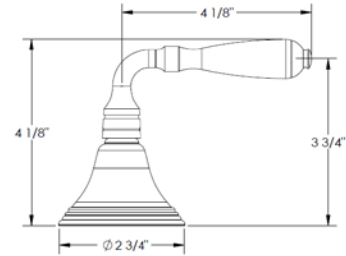
ITEM NO.	PART NUMBER	QTY.
2	A-POST-CAP	1
3	S1A-LVR	1
4	A-ESC	1
5	A-ESC-RING	1
6	CR-FHM1 0.164-32x0.625x0.625-S	1



Laprade (Code: BV01)



ITEM NO.	PART NUMBER	QTY.
1	SSCUPSKT 0.25-20x0.3125-HX-S	1
2	A-ESC	1
3	A-ESC-RING	1
4	BV01-LVR	1



Specification from Finished Wall to Tip of Broach Stem

HANDLE TRIM #	MEASUREMENT (IN.)
AX	3
G	3
H	3 1/4
U3/ U5	3 1/4
U6/ U7	3 1/4
W	2
WW	3 1/2
BV01	3

Note: When fitting handle it may be necessary to shorten broach stem and/or threaded nipple to eliminate gap between handle and escutcheon

IMPORTANT INSTALLATION INFORMATION

- USE TEFLON TAPE OR PIPE SEALANT FOR THREADED CONNECTIONS
- DO NOT USE PLUMBER'S PUTTY ON ANY OF THE BRASS COMPONENTS
This will cause the finish to tarnish and void the warranty. A non-corrosive Alkoxy Silicone is recommended.
- DURING SWEATING OF LINES DO NOT OVERHEAT CASTING
Overheating may cause damage to internal mechanism
- COPPER ADAPTORS MAY BE REQUIRED TO COMPLETE YOUR INSTALLATION

For technical support, please call 718-257-2800