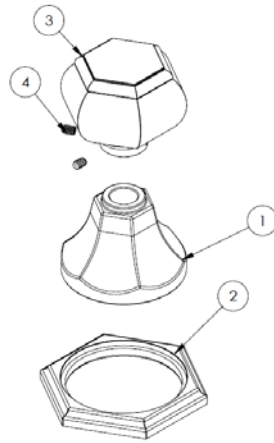
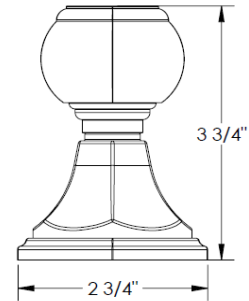


HANDLE TRIMS

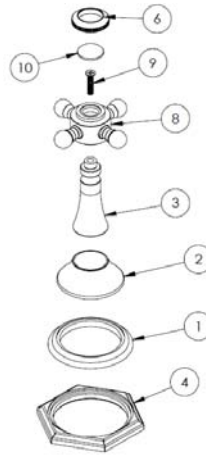
Newton (Code: T6)



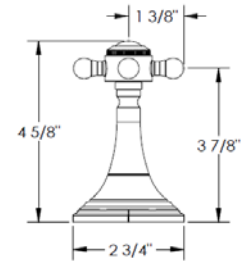
ITEM NO.	PART NUMBER	QTY.
1	X-ESC	1
2	XX-ESC-RING	1
3	T6-KNOB	1
4	SSCUPSKT 0.164-32x0.25-HX-S	2



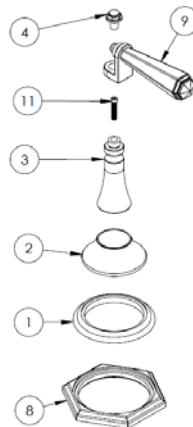
Needham (Code: T7)



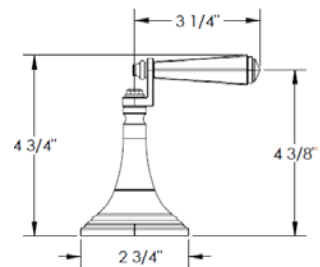
ITEM NO.	PART NUMBER	QTY.
1	U5-ESC-RING	1
2	U5-ESC	1
3	U5-POST	1
4	T7-ESC-RING	1
6	X-CAP-RING	1
7	AS568 - 014	1
8	V-POST	1
9	CR-FHM1 0.164-32x0.75x0.75-S	1
10	X-PRCLN-INSRT-PLN	1



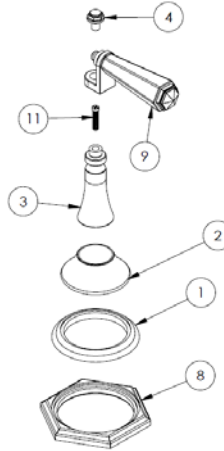
Chatam (Code: T8)



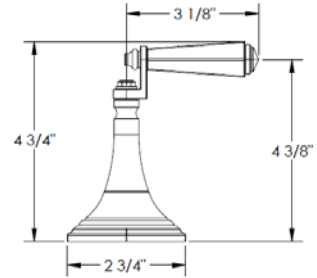
ITEM NO.	PART NUMBER	QTY.
1	U5-ESC-RING	1
2	U5-ESC	1
3	U5-POST	1
4	U5-POST-CAP	1
8	T7-ESC-RING	1
9	Y-LVR-INSRT	1
11	F-POST-SCRW	1



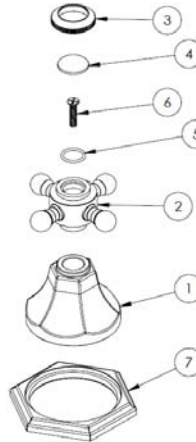
Chesapeake (Code: T9)



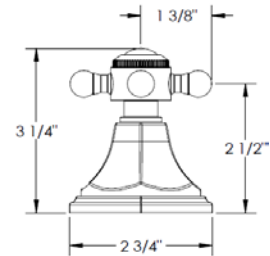
ITEM NO.	PART NUMBER	QTY.
1	U5-ESC-RING	1
2	U5-ESC	1
3	U5-POST	1
4	U5-POST-CAP	1
8	T7-ESC-RING	1
9	Z-PRCLN-LVR-INSRT	1
11	F-POST-SCRW	1



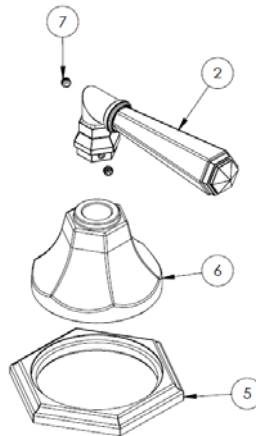
Sheffield (Code: XX)



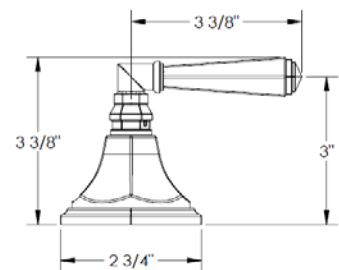
ITEM NO.	PART NUMBER	QTY.
1	X-ESC	1
2	X-POST	1
3	X-CAP-RING	1
4	X-PRCLN-INSRT-(PLN/COLD/HOT)	1
5	AS568 - 014	1
6	CR-FHMS 0.164-32x0.75x0.75-S	1
7	XX-ESC-RING	1



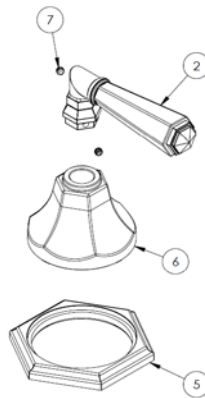
Newport (Code: YY)



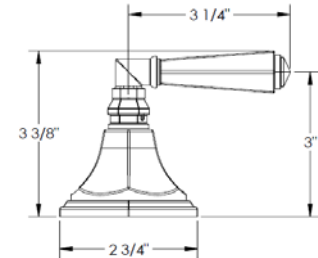
ITEM NO.	PART NUMBER	QTY.
2	Y-LVR-INSRT	1
5	XX-ESC-RING	1
6	X-ESC	1
7	SSCUPSKT 0.164-32x0.125-HX-S	2



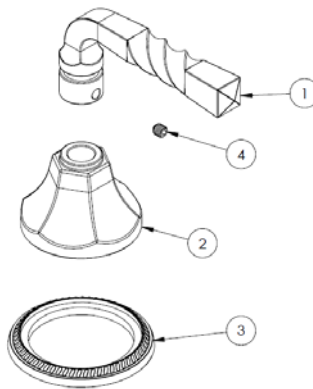
Bradford (Code: ZZ)



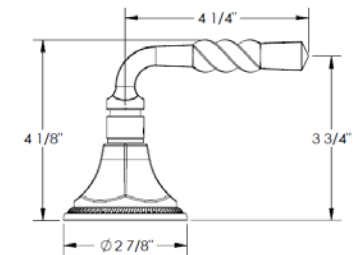
ITEM NO.	PART NUMBER	QTY.
2	Z-PRCLN-LVR-INSRT	1
5	XX-ESC-RING	1
6	X-ESC	1
7	SSCUPSKT 0.164-32x0.125-HX-S	2



Bourgogne (Code: BV09)



ITEM NO.	PART NUMBER	QTY.
1	BV09-LVR	1
2	X-ESC	1
3	HH-ESC-RING	1
4	B18.3.6M - M6 x 1 x 6 Hex Socket Type I Cup Pt. SS --S	1



Specification from Finished Wall to Tip of Broach Stem

HANDLE TRIM #	MEASUREMENT (IN.)
T6/ T7/ T8/ T9	3
XX/ YY/ ZZ	3
BV09	3

Note: When fitting handle it may be necessary to shorten broach stem and/or threaded nipple to eliminate gap between handle and escutcheon

IMPORTANT INSTALLATION INFORMATION

- USE TEFLON TAPE OR PIPE SEALANT FOR THREADED CONNECTIONS
- DO NOT USE PLUMBER'S PUTTY ON ANY OF THE BRASS COMPONENTS
This will cause the finish to tarnish and void the warranty. A non-corrosive Alkoxy Silicone is recommended.
- DURING SWEATING OF LINES DO NOT OVERHEAT CASTING
Overheating may cause damage to internal mechanism
- COPPER ADAPTORS MAY BE REQUIRED TO COMPLETE YOUR INSTALLATION

For technical support, please call 718-257-2800