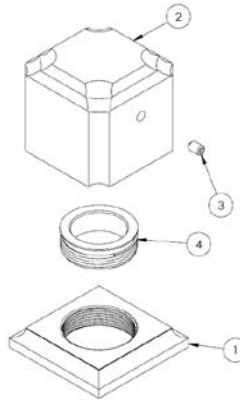
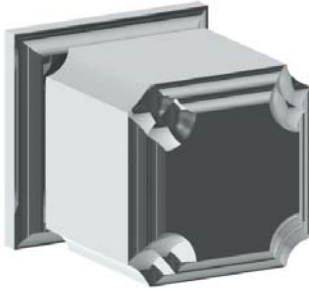
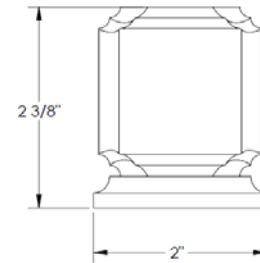


### HANDLE TRIMS

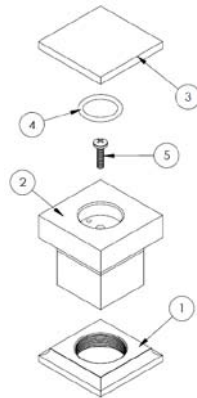
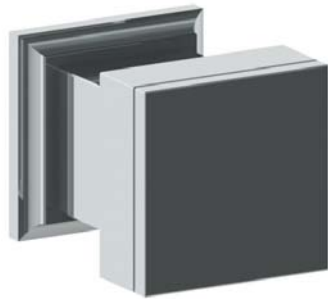
#### Valetin (Code: T1)



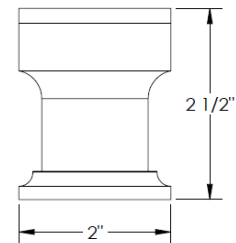
ITEM NO.	PART NUMBER	QTY.
1	T1-ESC	1
2	T1-KNOB	1
3	SSCUPSKT 0.164-32x0.25-HX-N	1
4	T1-ESC-ADAP	1



#### Louvre (Code: T4)



ITEM NO.	PART NUMBER	QTY.
1	T1-ESC	1
2	T4-KNOB	1
3	T4-KNOB-CAP	1
4	AS568 - 117	1
5	CR-PHMS 0.164-32x0.625x0.625-S	1



### Specification from Finished Wall to Tip of Broach Stem

HANDLE TRIM #	MEASUREMENT (IN.)
T1/ T4	2 ½

Note: When fitting handle it may be necessary to shorten broach stem and/or threaded nipple to eliminate gap between handle and escutcheon

#### IMPORTANT INSTALLATION INFORMATION

- USE TEFLON TAPE OR PIPE SEALANT FOR THREADED CONNECTIONS
- DO NOT USE PLUMBER'S PUTTY ON ANY OF THE BRASS COMPONENTS  
This will cause the finish to tarnish and void the warranty. A non-corrosive Alkoxy Silicone is recommended.
- DURING SWEATING OF LINES DO NOT OVERHEAT CASTING  
Overheating may cause damage to internal mechanism
- COPPER ADAPTORS MAY BE REQUIRED TO COMPLETE YOUR INSTALLATION

**For technical support, please call 718-257-2800**