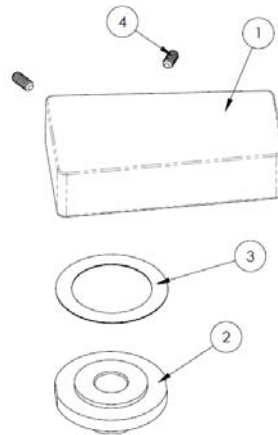
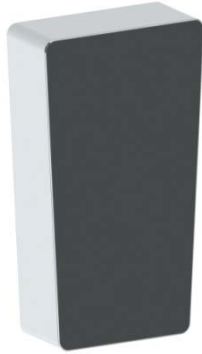
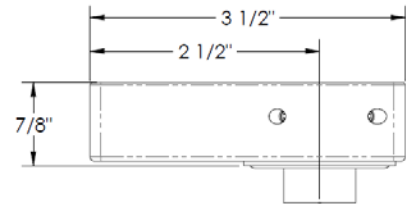


### HANDLE TRIMS

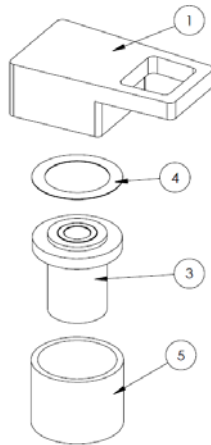
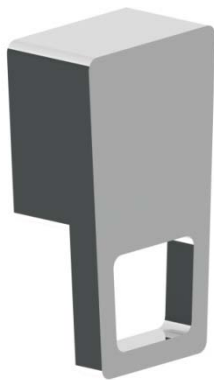
#### Boerum (Code: ED1)



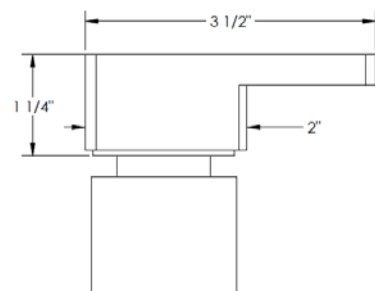
ITEM NO.	PART NUMBER	QTY.
1	WTR-ED1-LVR-L	1
2	MGNT-WTR-LOCK-NUT	1
3	Valve	1
4	SSCUPSKT 0.164-32x0.3125-HX-S	2



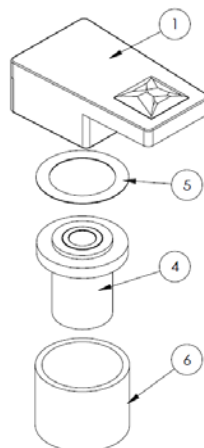
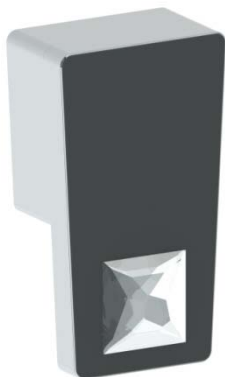
#### Cobble Hill (Code: ED2)



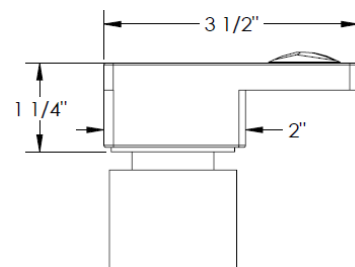
ITEM NO.	PART NUMBER	QTY.
1	ED2-LVR	1
3	Magnet	1
4	Valve	1
5	Plastic Collar	1



#### Carroll (Code: ED3)



ITEM NO.	PART NUMBER	QTY.
1	ED3-LVR	1
4	Magnet	1
5	Valve	1
6	Plastic Collar	1



## Specification from Finished Wall to Tip of Broach Stem

HANDLE TRIM #	MEASUREMENT (IN.)
ED1	1 1/4
ED2/ ED3	1 3/8

Note: When fitting handle it may be necessary to shorten broach stem and/or threaded nipple to eliminate gap between handle and escutcheon

### **IMPORTANT INSTALLATION INFORMATION**

- USE TEFLON TAPE OR PIPE SEALANT FOR THREADED CONNECTIONS
- DO NOT USE PLUMBER'S PUTTY ON ANY OF THE BRASS COMPONENTS  
This will cause the finish to tarnish and void the warranty. A non-corrosive Alkoxy Silicone is recommended.
- DURING SWEATING OF LINES DO NOT OVERHEAT CASTING  
Overheating may cause damage to internal mechanism
- COPPER ADAPTORS MAY BE REQUIRED TO COMPLETE YOUR INSTALLATION

**For technical support, please call 718-257-2800**