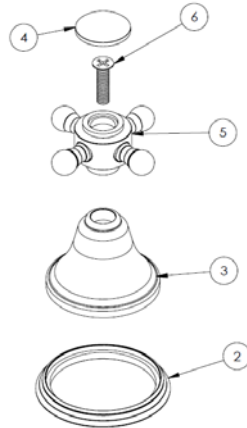
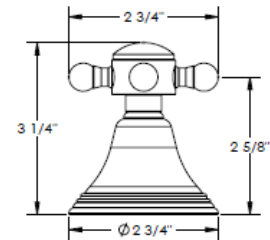


### HANDLE TRIMS

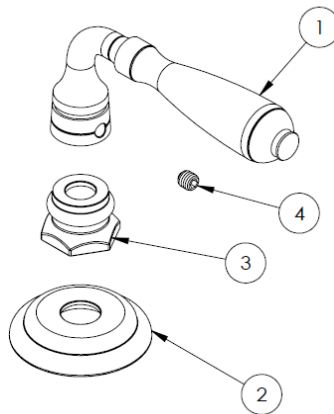
#### Los Angeles (Code: AX)



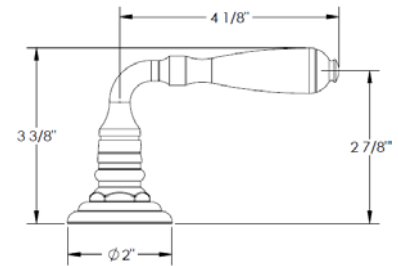
ITEM NO.	PART NUMBER	QTY.
2	A-ESC-RING	1
3	A-ESC	1
4	SA2-POST-CAP	1
5	X-POST	1
6	CR-FHM1 0.25-20x1x1-S	1



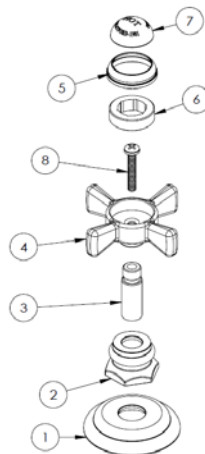
#### Lozere (Code: BV15)



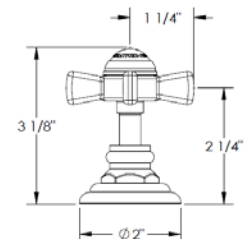
ITEM NO.	PART NUMBER	QTY.
1	BV01-LVR	1
2	S1-ESC	1
3	S1-ESC-NUT	1
4	SSCUPSKT 0.25-20x0.25-HX-S	1



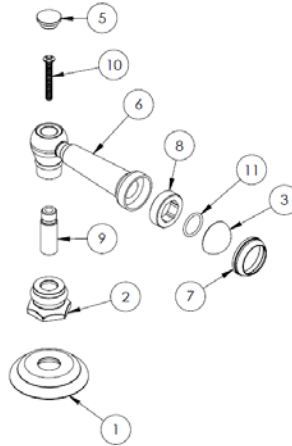
#### Preston (Code: S1)



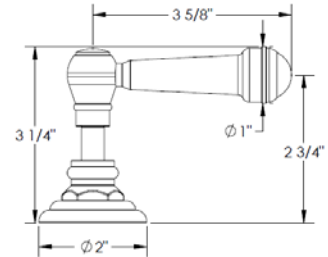
ITEM NO.	PART NUMBER	QTY.
1	S1-ESC	1
2	S1-ESC-NUT	1
3	S1-STEM	1
4	S1-HNDL-(COLD/HOT)	1
5	S1-CAP-RING	1
6	S1-CAP-ADAP	1
7	S1-PRCLN-INSRT-(PLN/COLD/HOT)	1
8	CR-PHMS 0.164-32x1x1-S	1



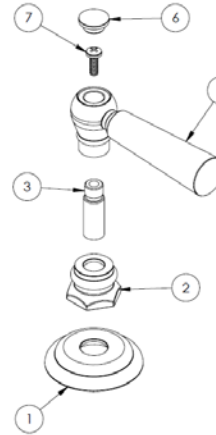
### Waltham (Code: S2)



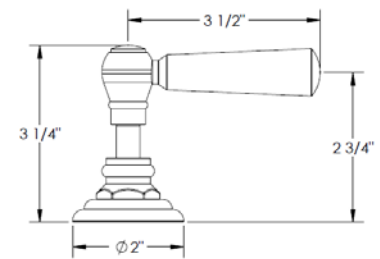
ITEM NO.	PART NUMBER	QTY.
1	S1-ESC	1
2	S1-ESC-NUT	1
3	S1-PRCLN-INSRT-(PLN/COLD/HOT)	1
5	A-POST-CAP	1
6	S2-LVR	1
7	S1-CAP-RING	1
8	S1-CAP-ADAP	1
9	S1-STEM	1
10	CR-FHMS 0.164-32x1.25x1.25-S	1
11	AS568 - 015	1



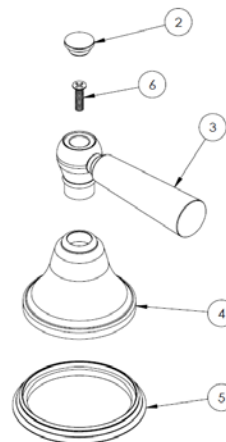
### Nottingham (Code: S1A)



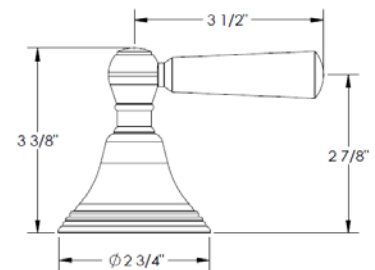
ITEM NO.	PART NUMBER	QTY.
1	S1-ESC	1
2	S1-ESC-NUT	1
3	S1-STEM	1
5	S1A-LVR	1
6	A-POST-CAP	1
7	CR-PHMS 0.164-32x0.5x0.5-S	1



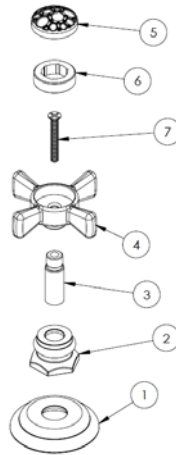
### Boston (Code: WW)



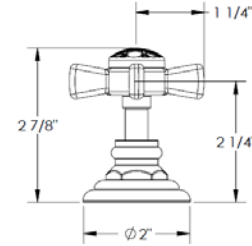
ITEM NO.	PART NUMBER	QTY.
2	A-POST-CAP	1
3	S1A-LVR	1
4	A-ESC	1
5	A-ESC-RING	1
6	CR-FHM1 0.164-32x0.625x0.625-S	1



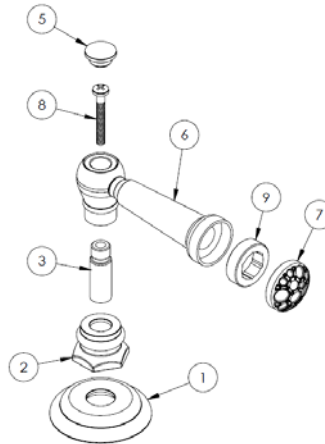
### Van der Rohe (Code: CC20)



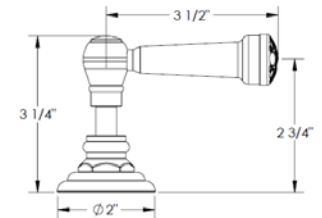
ITEM NO.	PART NUMBER	QTY.
1	S1-ESC	1
2	S1-ESC-NUT	1
3	S1-STEM	1
4	S1-HNDL-(COLD/HOT)	1
5	CC20-CAP	1
6	S1-CAP-ADAP	1
7	CR-FHMS 0.164-32x1.25x1.25-S	1



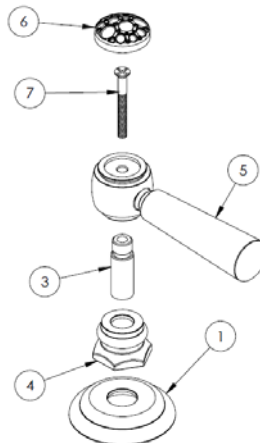
### Van der Rohe (Code: CC21)



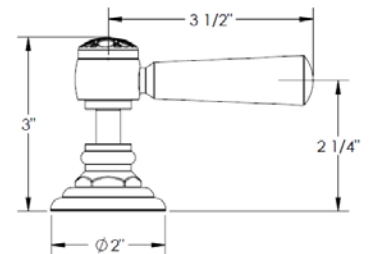
ITEM NO.	PART NUMBER	QTY.
1	S1-ESC	1
2	S1-ESC-NUT	1
3	S1-STEM	1
5	A-POST-CAP	1
6	S2-LVR	1
7	CC20-CAP	1
8	CR-PHMS 0.164-32x1.25x1-S	1
9	S1-CAP-ADAP	1



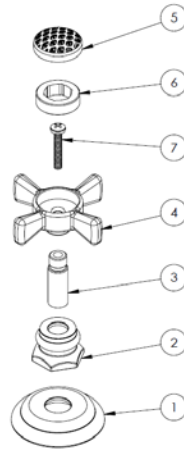
### Van der Rohe (Code: CC22)



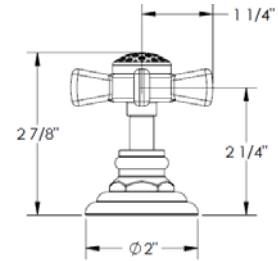
ITEM NO.	PART NUMBER	QTY.
1	S1-ESC	1
3	S1-STEM	1
4	S1-ESC-NUT	1
5	S1A-LVR	1
6	CC20-CAP	1
7	CR-FHMS 0.164-32x1.5x1-S	1



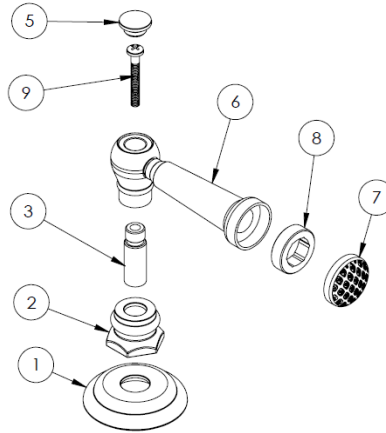
### Pei (Code: CC40)



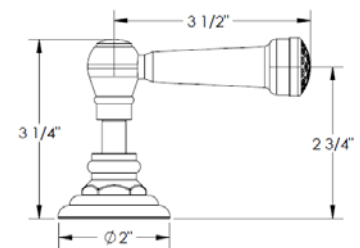
ITEM NO.	PART NUMBER	QTY.
1	S1-ESC	1
2	S1-ESC-NUT	1
3	S1-STEM	1
4	S1-HNDL-(COLD/HOT)	1
5	CC40-CAP	1
6	S1-CAP-ADAP	1
7	CR-PHMS 0.164-32x1x1-S	1



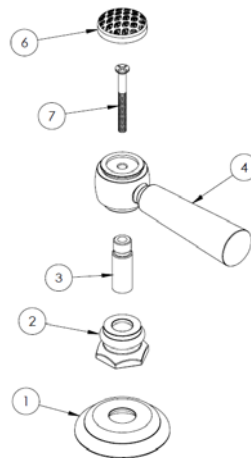
### Pei (Code: CC41)



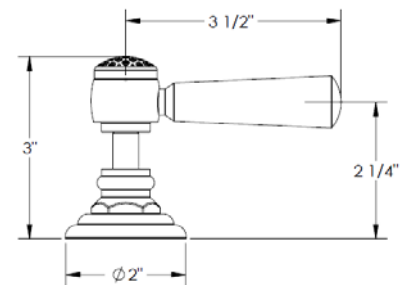
ITEM NO.	PART NUMBER	QTY.
1	S1-ESC	1
2	S1-ESC-NUT	1
3	S1-STEM	1
5	A-POST-CAP	1
6	S2-LVR	1
7	CC40-CAP	1
8	S1-CAP-ADAP	1
9	CR-PHMS 0.164-32x1.25x1-S	1



### Pei (Code: CC42)



ITEM NO.	PART NUMBER	QTY.
1	S1-ESC	1
2	S1-ESC-NUT	1
3	S1-STEM	1
4	S1A-LVR	1
6	CC40-CAP	1
7	CR-FHMS 0.164-32x1.625x1-S	1



## Specification from Finished Wall to Tip of Broach Stem

HANDLE TRIM #	MEASUREMENT (IN.)
AX	3
S1/ S1A/ S2	2 1/4
WW	3 1/2
BV15	2 1/2
CC20/ CC21/ CC22	2 1/4
CC40/ CC41/ CC42	2 1/4

Note: When fitting handle it may be necessary to shorten broach stem and/or threaded nipple to eliminate gap between handle and escutcheon

### **IMPORTANT INSTALLATION INFORMATION**

- USE TEFLON TAPE OR PIPE SEALANT FOR THREADED CONNECTIONS
- DO NOT USE PLUMBER'S PUTTY ON ANY OF THE BRASS COMPONENTS  
This will cause the finish to tarnish and void the warranty. A non-corrosive Alkoxy Silicone is recommended.
- DURING SWEATING OF LINES DO NOT OVERHEAT CASTING  
Overheating may cause damage to internal mechanism
- COPPER ADAPTORS MAY BE REQUIRED TO COMPLETE YOUR INSTALLATION

**For technical support, please call 718-257-2800**