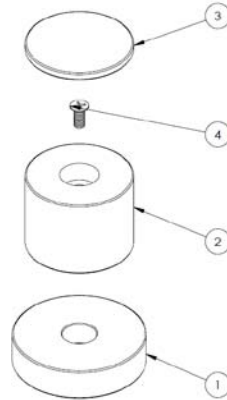
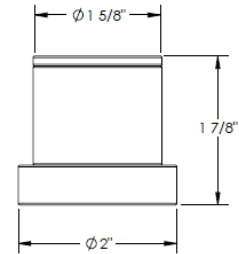


### HANDLE TRIMS

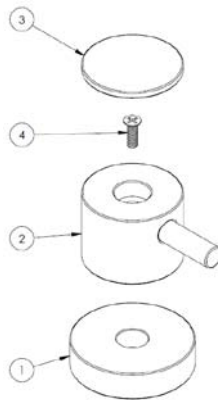
#### Diamond Knurl (Code: T1A)



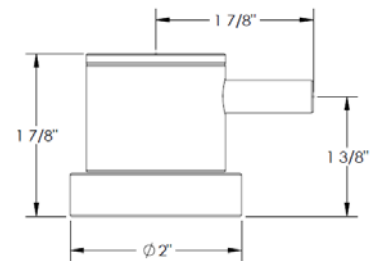
ITEM NO.	PART NUMBER	QTY.
1	L4-ESC	1
2	TIA-KNOB	1
3	TIA-CAP	1
4	CR-FHM1 0.164-32x0.375x0.375-S	1



#### Smooth Lever (Code: T1B)



ITEM NO.	PART NUMBER	QTY.
1	L4-ESC	1
2	TIB-KNOB	1
3	TIB-CAP	1
4	CR-FHM1 0.164-32x0.5x0.5-S	1



### Specification from Finished Wall to Tip of Broach Stem

HANDLE TRIM #	MEASUREMENT (IN.)
T1A	1 3/4
T1B	1 3/4

Note: When fitting handle it may be necessary to shorten broach stem and/or threaded nipple to eliminate gap between handle and escutcheon

#### **IMPORTANT INSTALLATION INFORMATION**

- USE TEFLON TAPE OR PIPE SEALANT FOR THREADED CONNECTIONS
- DO NOT USE PLUMBER'S PUTTY ON ANY OF THE BRASS COMPONENTS  
This will cause the finish to tarnish and void the warranty. A non-corrosive Alkoxy Silicone is recommended.
- DURING SWEATING OF LINES DO NOT OVERHEAT CASTING  
Overheating may cause damage to internal mechanism
- COPPER ADAPTORS MAY BE REQUIRED TO COMPLETE YOUR INSTALLATION

**For technical support, please call 718-257-2800**