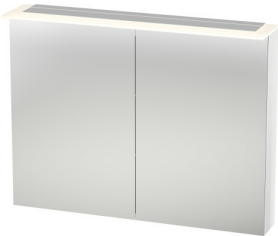


X-Large Mirror cabinet # XL7595

| < 39 3/8" Inch > |



Mirror cabinet	Dimension	Weight	Order number
<p>cIAPMO®ELECTRICAL, 2 mirror doors, back panel inside mirror glass, 2 glass shelves (clear glass), 1 sensor switch bottom right, GFCI outlets are not supplied by the manufacturer (GFCI outlets can be added to the cabinet by a certified electrician on the job site), LED (life span > 30,000 hours), LED module permanently enclosed, Mirror cabinets require a GFCI 110 V 60 Hz power source. Flat plug will be supplied with the mirror cabinet, LED module 3500 kelvin light color, 26 W</p>			
Colors			
<p>M03 Jade High Gloss Lacquer M10 Apricot Pearl High Gloss Lacquer M12 Brushed Oak (Real wood veneer) M13 American Walnut (Real wood veneer) M14 Terra (Decor) M18 White Matt M20 VSG Picto White M22 White High Gloss (Decor) M27 White Lilac High Gloss Lacquer M31 Pine Silver (Decor) M38 Dolomiti Grey High Gloss Lacquer M40 Black High Gloss Lacquer M43 Basalt Matt (Decor) M47 Stone Blue High Gloss Lacquer M49 Graphite Matt (Decor) M51 Pine Terra (Decor) M52 European Oak (Decor) M53 Chestnut Dark (Decor) M61 Olive Brown High Gloss Lacquer M69 Brushed Walnut (Real wood veneer) M71 Mediterranean Oak (Real wood veneer) M72 Brushed Dark Oak (Real wood veneer) M73 Ticino Cherry Tree (Decor) M79 Natural Walnut (Decor) M85 White High Gloss Lacquer M86 Cappuccino High Gloss Lacquer M87 White Lilac Satin Matt Lacquer M89 Flannel Grey High Gloss Lacquer M90 Flannel Grey Satin Matt Lacquer</p>			
Variant			
	39 3/8" x 8 1/8" Inch		XL7595
Infobox			
Distance between sensor and reflecting surfaces = minimum 3"			
Additional modules cIAPMO®ELECTRICAL, LED dimming function			
			UV9980

All drawings contain the necessary measurements which are subject to standard tolerances. They are stated in inch & mm and are non-binding. Exact measurements, in particular for customized installation scenarios, can only be taken from the finished ceramic piece.