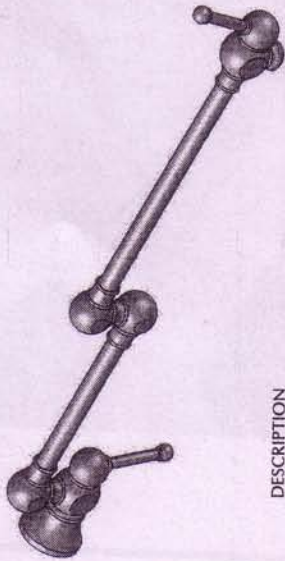


Model: #WP-903



DESCRIPTION

- DOUBLE JOINTED SWING SPOUT
- VICTORIAN LEVER HANDLE
- 1/4" TURN, SHUT-OFF VALVE LOCATED AT WALL
- QUICK CONNECTOR

Maintenance

Cleaning Materials for Pot Filler

- Do not use cleansers that contain hydrochloric, formic, acetic, or phosphoric acids, as these will cause considerable damage to finishes and to some components.
- Never mix cleaning materials.
- Never use cleansers containing abrasives. Do not use abrasive cleaning cloths, pads, or sponges.

Cleaning Procedures

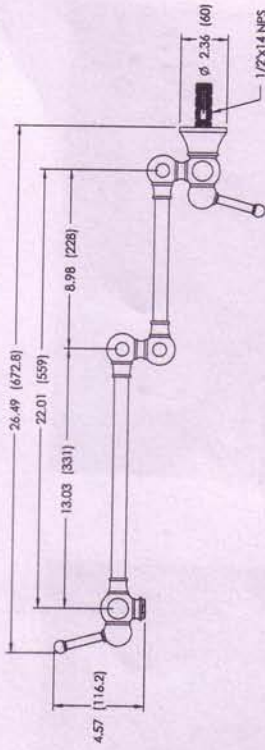
- Clean your Pot Filler when required. Regular cleaning will prevent scale buildup and water spotting.
- Follow the label instructions. Do not allow any cleaner to remain on the product for longer than necessary.
- When using spray cleaners, spray first onto a sponge or cloth – DO NOT spray directly onto the product.
- After cleaning, rinse thoroughly with clear water to remove any cleaner residue.

Important

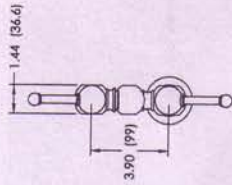
- Soap and shampoo residue can also cause damage to the product. Rinse well with clean water after use.
- If the surface is already damaged, harsh cleaning materials will cause further damage.

*** Dimensions in inches and [millimeters] ***

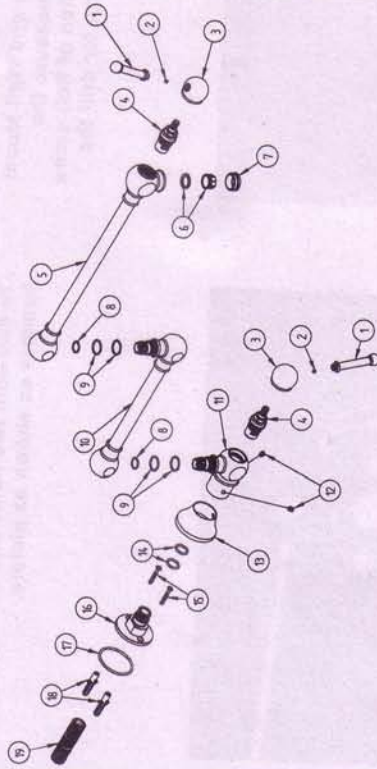
- SIDE VIEW -



- FRONT VIEW -

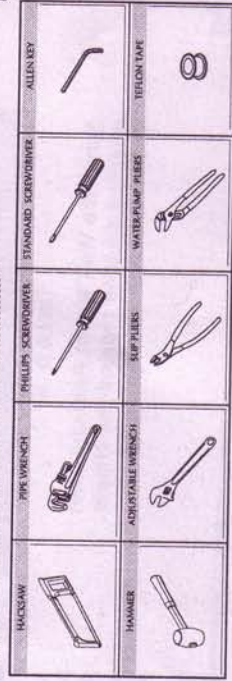


*** Explode Drawing ***

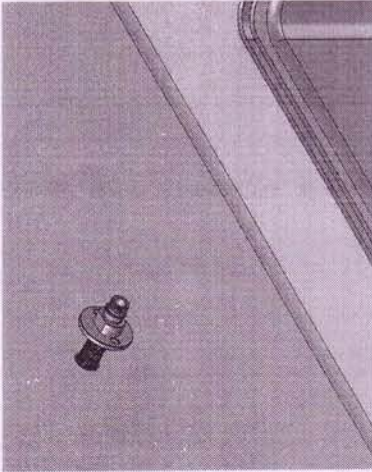


Item Number	Part Description	Quantity
1	Handle lever	2
2	Handle Screw M4x4	2
3	Handle body	2
4	Ceramic Cartridge J450	2
5	Bentched Spout	1
6	Avatar Set	1
7	Housing of Avatar	1
8	O-Ring A221	2
9	O-Ring A068	4
10	Supportable Spout	1
11	Spout Pedestal	1
12	Pedestal Screw M4x6	2
13	Pedestal Cover	1
14	O-Ring A123	2
15	Ball FB4-1/2"	2
16	Wall Mount Pedestal	1
17	O-Ring A031	1
18	Pin	2
19	Nipple 1/2"x3/4"	1

*** You may need ***

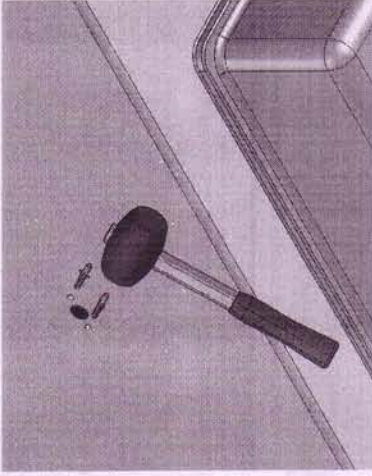


- Refer to EXPLODED DRAWING to familiarize yourself with the various parts of the Pot Filler. Make sure you have all the illustrated parts before you begin installation.
- * Observe all local plumbing codes.
 - * Carefully inspect the faucet for any damage.
 - * Flush all piping thoroughly before installing.
 - * Shut off the water supply.



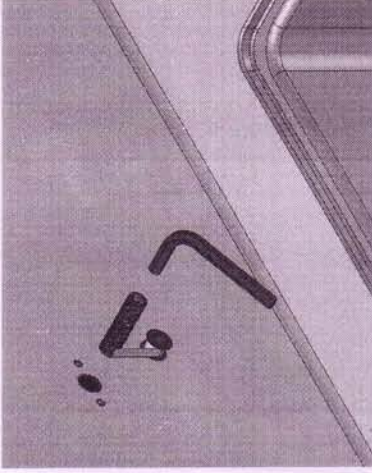
step 1

To screw attached Nipple and Wall Mount Pedestal to the wall for measure the length and sign the position of Bolt screw. Then move out these parts for drill the hole.



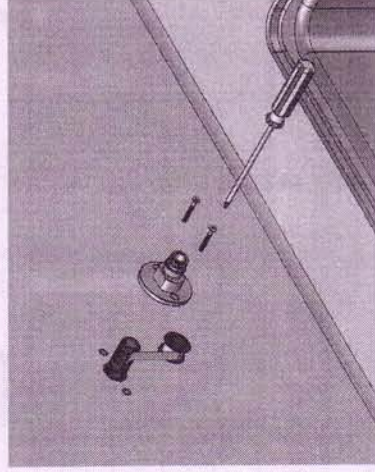
step 2

To drill both two holes and install plug by hammer as shown as picture.



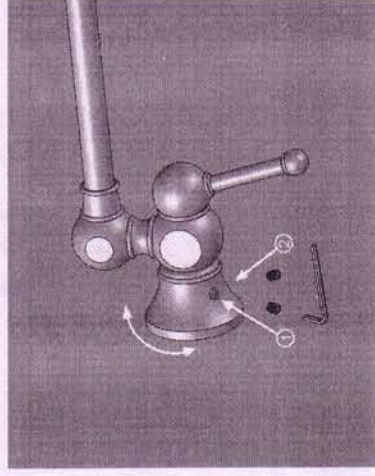
step 3

Screw the Nipple into inlet connector by Allen key. Before that, attach the silicone tape on the connector end for prevent leakage.



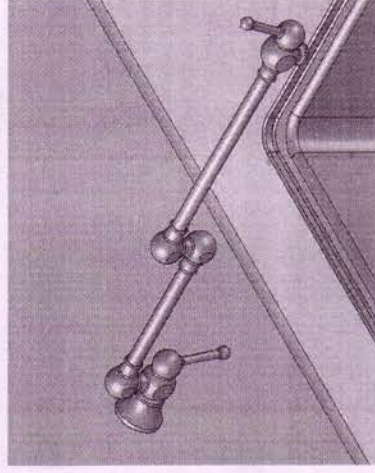
step 4

Screw the Wall Mount Pedestal after attached silicone tape on the Nipple. Then install bolt screw to the wall.



step 5

For connect Mount Pedestal, put Spout Pedestal with spout set together. Then rotate Pedestal cover from position 1 to 2 as shown for fixed screw.



step 6

Finish the wall for complete installation. Attention: Do not rotate spout of Pot Filler before install completed !