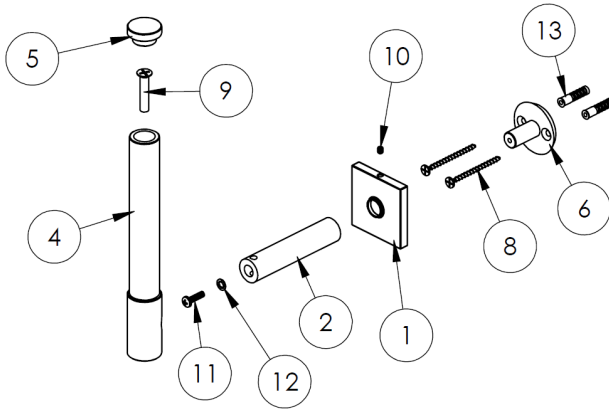


NOTE:

- Use plywood backing in walls whenever possible, to ensure security to wall.
- Do all painting, staining or wall papering before accessory installation.

27-0.4(A) Paper Holder



ITEM NO.	PART NUMBER	QTY.
1	ESCUTCHEON	1
2	POST	1
4	PAPER LEVER ASSEMBLY	1
5	LEVER CAP	1
6	MOUNTING FLANGE ASSEMBLY	1
8	#8-2.5-IN-DRYWALL-SCRW	2
9	LEVER ASSEMBLY SCREW	1
10	SET SCREW FOR ESCUTCHEON	1
11	POST MOUNTING SCREW	1
12	TOOTHED LOCK WASHER	1
13	AF6 WALL ANCHOR	2

- 1) First, disassemble the Spare Paper Holder Assembly into the components shown in the above diagram. Remove the Cap (5) from the Lever Assembly (4) to remove the Lever Screw (9). Remove the Post Screw (11) to allow removal of the Post (2) from the Mounting Assembly (6). Remove the Set Screw (10) to allow the removal of the Escutcheon (1).
- 2) Determine where you want to install the spare paper holder.
- 3) Place spare paper holder on wall at desired position and ensure that it is level.
- 4) With a pencil, mark the centers of the mounting hole positions on the Mounting Flange (6).
- 5) If using the supplied Wall Anchors (13), drill a ¼" hole at each marked position (1 ¾" min. hole depth).
- 6) Insert anchors into holes until flush with the wall (a hammer may be needed to lightly tap the anchors flush).
- 7) Secure the Mounting Flange Assembly (6) to the wall using the supplied Screws (8).
- 8) Using the Set Screw (10), install the Escutcheon (1) on the Mounting Flange Assembly (6).
- 9) Using the Post Mounting Screw (11) and Toothed Lock Washer (12), install the paper holder Post (2) onto the Mounting Flange Assembly (6).
- 10) Using the Lever Assembly Screw (9) in the Paper Lever Assembly (4), connect the paper holder to the Post (2).
- 11) Screw the Lever Cap (5) to the Paper Lever Assembly (4).

IMPORTANT INSTALLATION INFORMATION

- DO NOT USE PLUMBER'S PUTTY ON ANY OF THE BRASS COMPONENTS
 - This will cause the finish to tarnish and void the warranty. A non-corrosive Alkoxy Silicone is recommended.

To help ensure the beauty of brass accessories, never install an item until construction is almost completed and after:

- Workmen have finished treating nearby tile or marble with acid or chemicals.
- The air conditioning or heat has been turned on.
- The room has been painted or stained.

For technical support or warranty information, please call 718-257-2800

