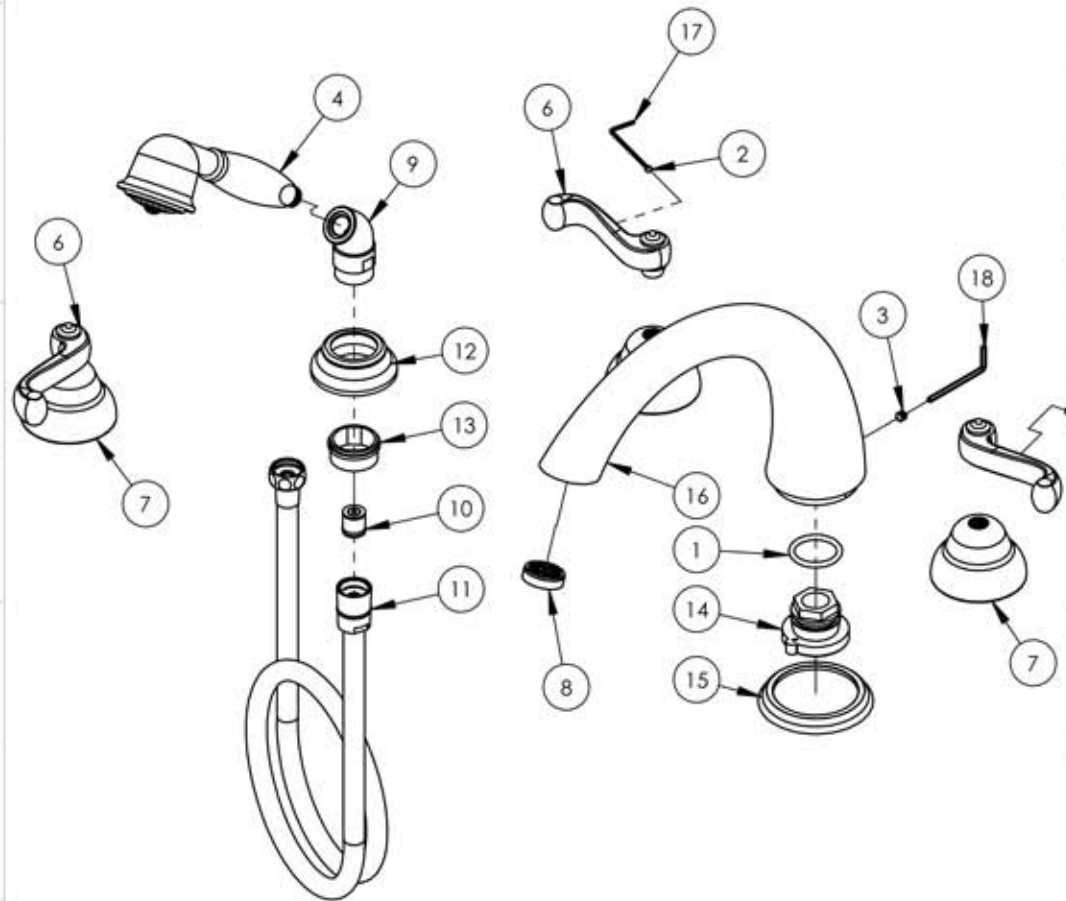


A

B

C

D



ITEM NO.	PART NUMBER	DESCRIPTION	QTY.
1	90530	O-RING, 1 1/8"ID X 1 5/16"OD X 1/8"THK, 9555K34	1
2	92163	SET SCREW, CONE PT 8-32 X 1/8"L	3
3	92191	M6X1.0 -6MM L	1
4	K6560/00	HAND SHOWER	1
	11032/00	SHOWER HEAD SOCKET	1
	90525	BLACK RUBBER GASKET (SEAL) FOR HAND SHOWER	1
	11031/00	PERFORATED BOTTOM INSERT	1
	92186	BRASS PAN HEAD SCREW, 10-32 THREAD, 1 1/2" LONG	1
	90008	O-RING, 3/16"ID X 5/16"OD X 1/16"THK, AS-568-008	1
	11033	EXTENSION THREADED TUBING	1
	11034/00	EXTENSION SLEEVE	1
5	P01001/00	HANDLE LEVER, RIGHT REVERE & SAVANNAH	1
6	P01002/00	HANDLE LEVER, LEFT REVERE & SAVANNAH	2
7	P02004/00	K190X2 COVER PLATE	3
8	P05003	AERATOR F/DECK & WALL SPOUT	1
9	P15002/00	K6560 ELBOW	1
10	P15006	FLOW REGULATION CHECK VALVE	1
11	P15008/00	HOSE, 1/2" BY 59" LENGTH	1
12	P18001_1/00	K6005 TRIM	1
13	P18001_2	SLEEVE, RECEPTAL	1
14	P27018	DECK SPOUT ADAPTER, W/ 3/4 NPT	1
15	P27019/00	K1120L SPOUT BASE	1
16	P27020/00	K5120 DECK SPOUT	1
17	P39001	5/64 HEX KEY	1
18	P39005	3MM HEX KEY	1

E

ZONE	REV.	DESCRIPTION	DATE	APPROVED
REVISIONS				
1261 LOGAN AVENUE COSTA MESA, CALIFORNIA 92626 PHONE: 714.361.4800 FAX: 714.617.3120		PHYL RICH®	PROPRIETARY AND CONFIDENTIAL <small>THE INFORMATION CONTAINED IN THIS DRAWING IS THE SOLE PROPERTY OF RSS MANUFACTURING. ANY REPRODUCTION IN PART OR AS A WHOLE WITHOUT THE WRITTEN PERMISSION OF RSS MANUFACTURING IS PROHIBITED.</small>	
Defining Luxury Since 1959				

-		-		INTERPRET GEOMETRIC DIMENSIONING & TOLERANCING IN ACCORDANCE WITH ASME Y14.5-2009 & ASME Y14.41-2003 STANDARDS, UNLESS OTHERWISE SPECIFIED. DIMENSIONS ARE IN INCHES. TOLERANCES ARE:		ROMAN TUB WITH HANDSHOWER, REVERE & SAVANNAH SERIES, CURVED LEVER	
NEXT ASSY		USED ON		FRACTIONS ±1/64"			
APPLICATION				ANGULAR ±5°		SIZE	
MATERIAL				NAME		ASM/PRT NO. A D2202T1/00	
FINISH				DATE		REV	
DO NOT SCALE DRAWING				DRAWN		SCALE: 1:5	
				CHECKED		WEIGHT: lbs.	
						SHEET 1 OF 1	

5

4

3

2

1