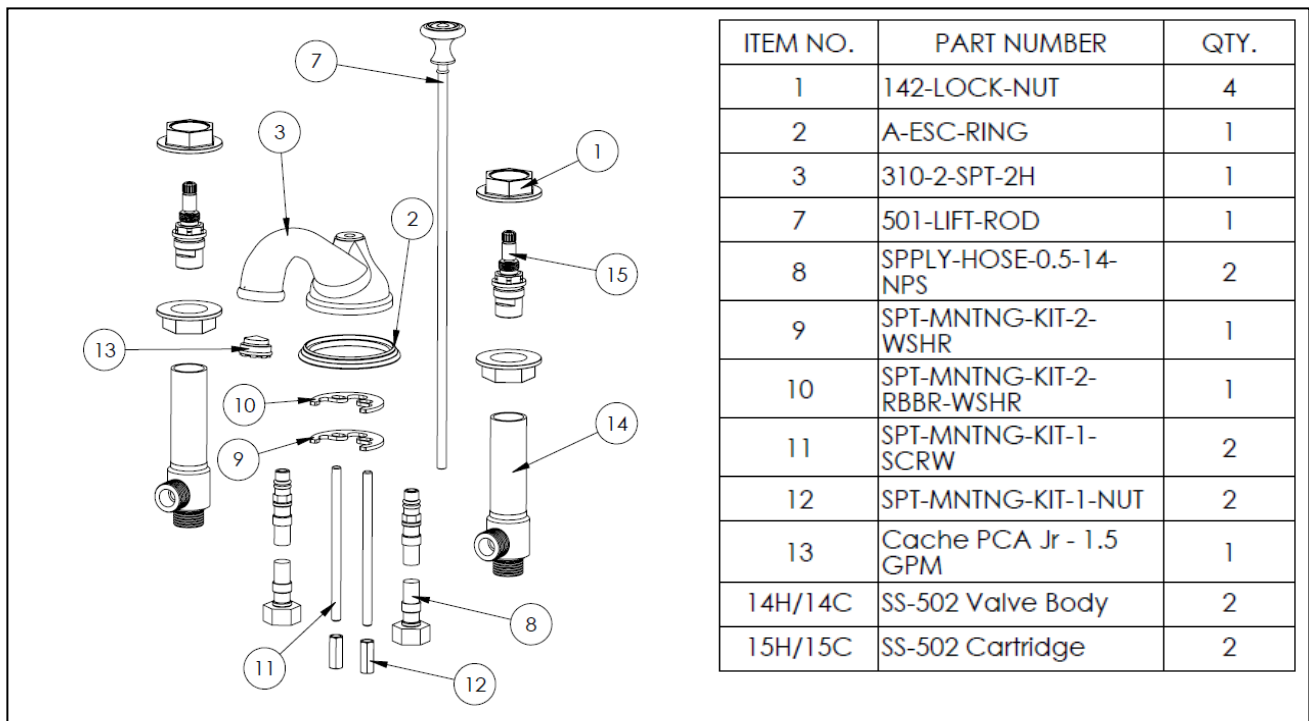
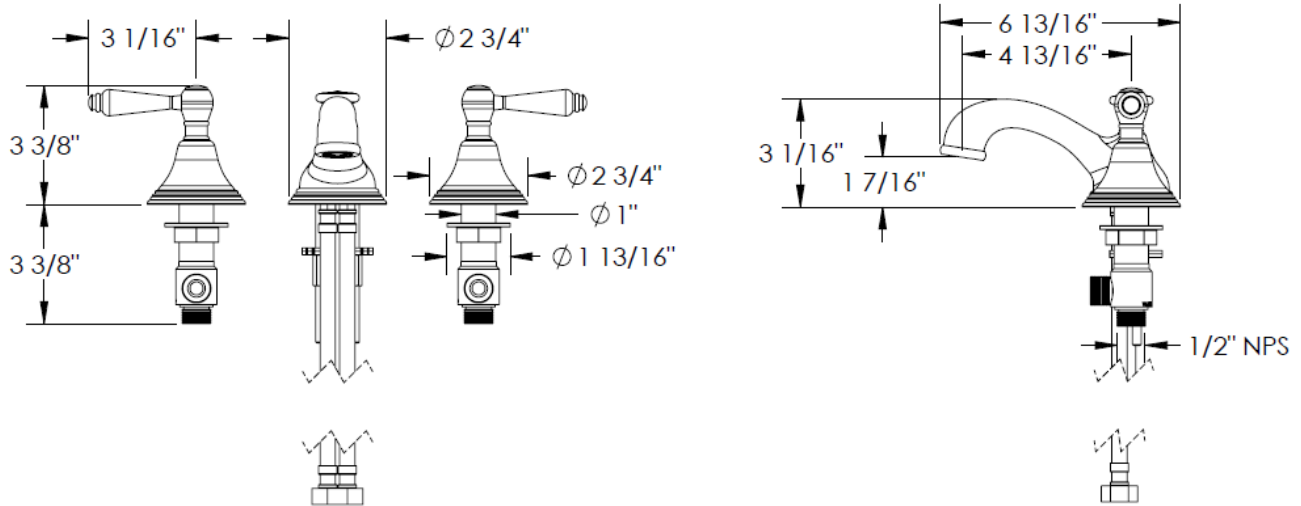


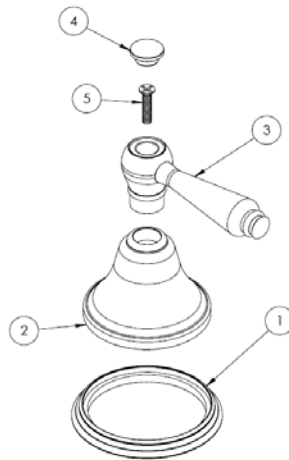
FEATURES

- ¼ turn washerless ceramic disc valve cartridges
- Flexible hose connection for 8" to 16" spread installations
- Flow rate 1.5 gpm (5.7 lpm) maximum flow rate
- Solid brass construction
- Listed by IAPMO, CSA, NSF, and other municipalities
- Warranty:
 - Limited lifetime warranty (residential use)
 - One year (commercial use)
- Shipping weight (lbs.) 10
- Shipping dimensions (in.): 29x12x4

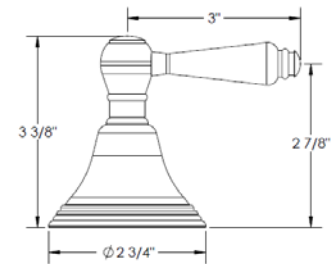


HANDLE TRIMS

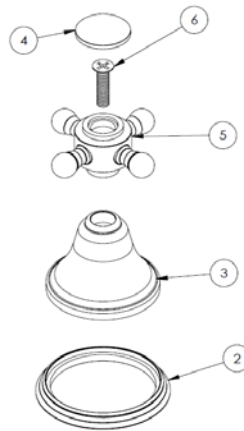
New York (Code: A)



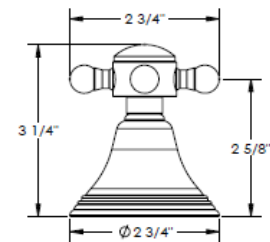
ITEM NO.	PART NUMBER	QTY.
1	A-ESC-RING	1
2	A-ESC	1
3	A-LVR	1
4	A-POST-CAP	1
5	CR-FHMS 0.164-32x0.75x0.75-S	1



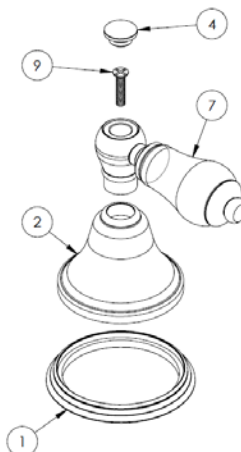
Los Angeles (Code: AX)



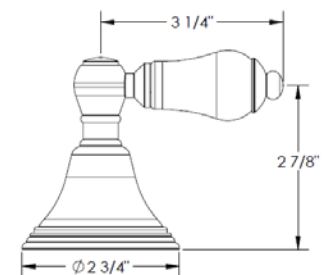
ITEM NO.	PART NUMBER	QTY.
2	A-ESC-RING	1
3	A-ESC	1
4	SA2-POST-CAP	1
5	X-POST	1
6	CR-FHM1 0.25-20x1x1-S	1



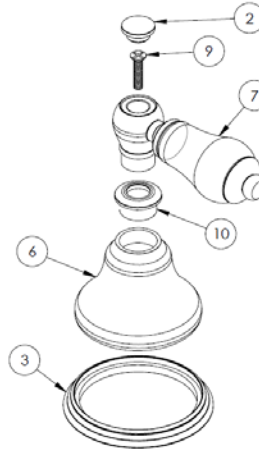
Dallas (Code: D)



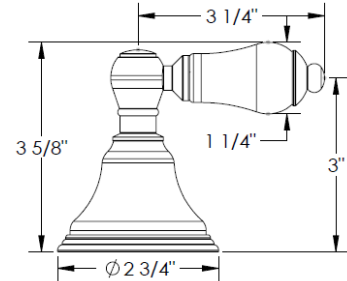
ITEM NO.	PART NUMBER	QTY.
1	A-ESC-RING	1
2	A-ESC	1
4	A-POST-CAP	1
7	D-PRCLN-LVR-INSRT	1
9	CR-FHMS 0.164-32x0.75x0.75-S	1



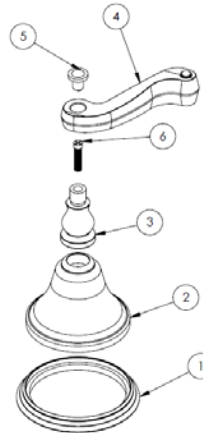
Philadelphia (Code: E)



ITEM NO.	PART NUMBER	QTY.
2	A-POST-CAP	1
3	A-ESC-RING	1
6	E-PRCLN-ESC	1
7	D-PRCLN-LVR-INSRT	1
9	CR-FHMS 0.164-32x0.75x0.75-S	1
10	B4-ESC-NUT	1

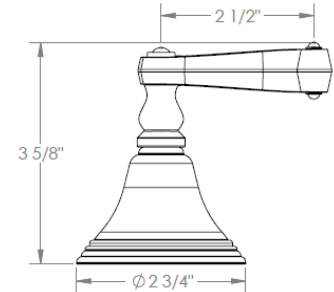


Houston (Code: F)

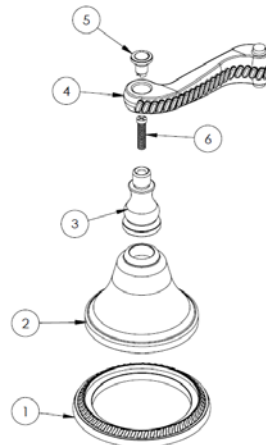


ITEM NO.	PART NUMBER	QTY.
1	A-ESC-RING	1
2	A-ESC	1
3	F-POST	1
4	F-LVR	1
5	F-POST-CAP	1
6	F-POST-SCRW	1

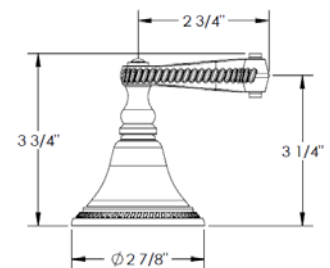
HNDL: 3, 4, 5 & 6



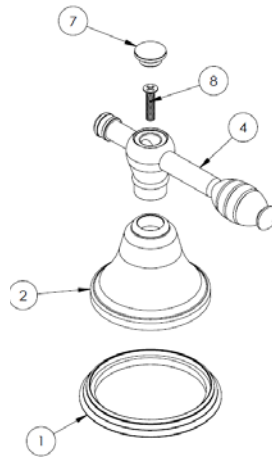
Phoenix (Code: HH)



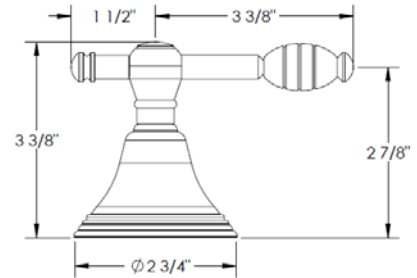
ITEM NO.	PART NUMBER	QTY.
1	HH-ESC-RING	1
2	A-ESC	1
3	F-POST	1
4	G-LVR	1
5	F-POST-CAP	1
6	F-POST-SCRW	1



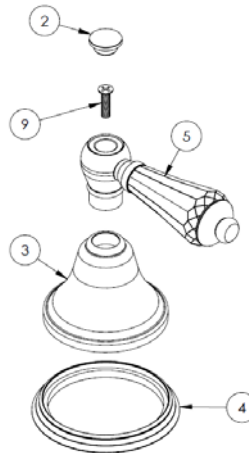
Detroit (Code: I)



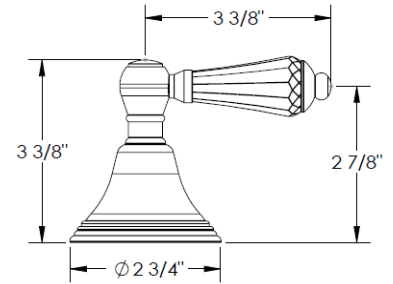
ITEM NO.	PART NUMBER	QTY.
1	A-ESC-RING	1
2	A-ESC	1
4	LVR	1
7	A-POST-CAP	1
8	CR-FHMT 0.164-32x0.75x0.75-S	1



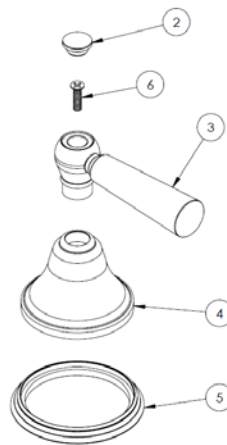
San Francisco (Code: SW)



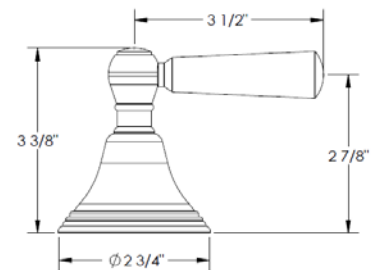
ITEM NO.	PART NUMBER	QTY.
2	A-POST-CAP	1
3	A-ESC	1
4	A-ESC-RING	1
5	SW-CRSTL-LVR-INSRT	1
9	CR-FHMT 0.164-32x0.625x0.625-S	1



Boston (Code: WW)



ITEM NO.	PART NUMBER	QTY.
2	A-POST-CAP	1
3	STA-LVR	1
4	A-ESC	1
5	A-ESC-RING	1
6	CR-FHMT 0.164-32x0.625x0.625-S	1



IMPORTANT INSTALLATION INFORMATION

- USE TEFLON TAPE OR PIPE SEALANT FOR THREADED CONNECTIONS
- DO NOT USE PLUMBER'S PUTTY ON ANY OF THE BRASS COMPONENTS
This will cause the finish to tarnish and void the warranty. A non-corrosive Alkoxy Silicone is recommended.
- DURING SWEATING OF LINES DO NOT OVERHEAT CASTING
Overheating may cause damage to internal mechanism
- COPPER ADAPTORS MAY BE REQUIRED TO COMPLETE YOUR INSTALLATION

For technical support, please call 718-257-2800

Rev. 1/1