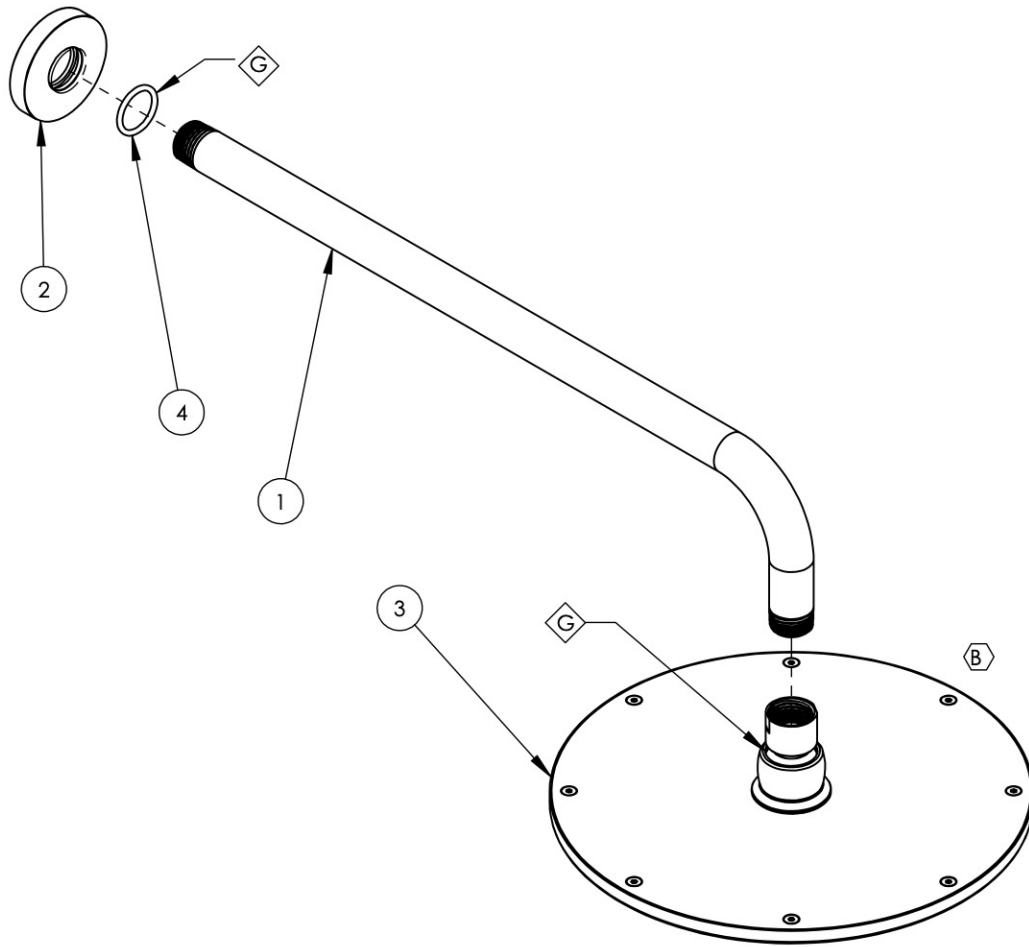


NOTE(S):

1. APPLY NSF COMPLIANT GREASE TO ANY O-RING, SEALING JOINTS, AND/OR PIVOTAL POINTS. G

ITEM NO.	PART NUMBER	DESCRIPTION	QTY.
1	11023/00	SHOWER ARM	1
2	P16019/00	BASE SHOWER FLANGE, BASIC SERIES	1
3	3-334/00	8" ROUND SHOWER HEAD	1
4	90117	O-RING, 7/8"ID X 33/32"THK., AS-568-117	1



ALL	B	COMBINE PARTS INTO SUB ASSEMBLY 3-334	12/28/2018	AMM
ZONE	REV.	DESCRIPTION	DATE	APPROVED

REVISIONS

1261 LOGAN AVENUE  
COSTA MESA, CALIFORNIA 92626  
PHONE: 714.361.4800  
FAX: 714.617.3120



**PROPRIETARY AND CONFIDENTIAL**

THE INFORMATION CONTAINED IN THIS DRAWING IS THE SOLE PROPERTY OF RSS MANUFACTURING. ANY REPRODUCTION IN PART OR AS A WHOLE WITHOUT THE WRITTEN PERMISSION OF RSS MANUFACTURING IS PROHIBITED.

-	-	INTERPRET GEOMETRIC DIMENSIONING & TOLERANCING IN ACCORDANCE WITH ASME Y14.5-2009 & ASME Y14.41-2003 STANDARDS, UNLESS OTHERWISE SPECIFIED. DIMENSIONS ARE IN INCHES. TOLERANCES ARE:		
NEXT ASSY	USED ON	FRACTIONS ±1/64"	DECIMALS X.X: ±.1 X.XX: ±.01 X.XXX: ±.005	ANGULAR ±.5°
APPLICATION		MATERIAL	NAME	DATE
FINISH		DRAWN	7/1/2013	
<b>DO NOT SCALE DRAWING</b>		CHECKED	GRE	

**9" ROUND SHOWER HEAD WITH SHOWER ARM AND FLANGE**

SIZE	ASM/PRT NO.	REV
<b>A</b>	K831/00	<b>B</b>
SCALE: 1:3.5	WEIGHT: lbs.	SHEET 1 OF 2

5

4

3

2

1