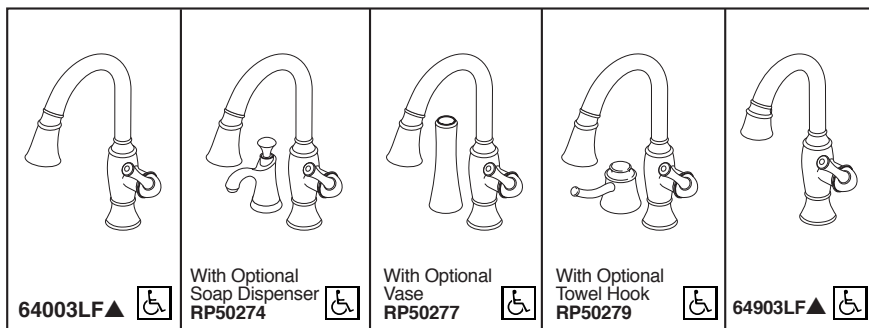
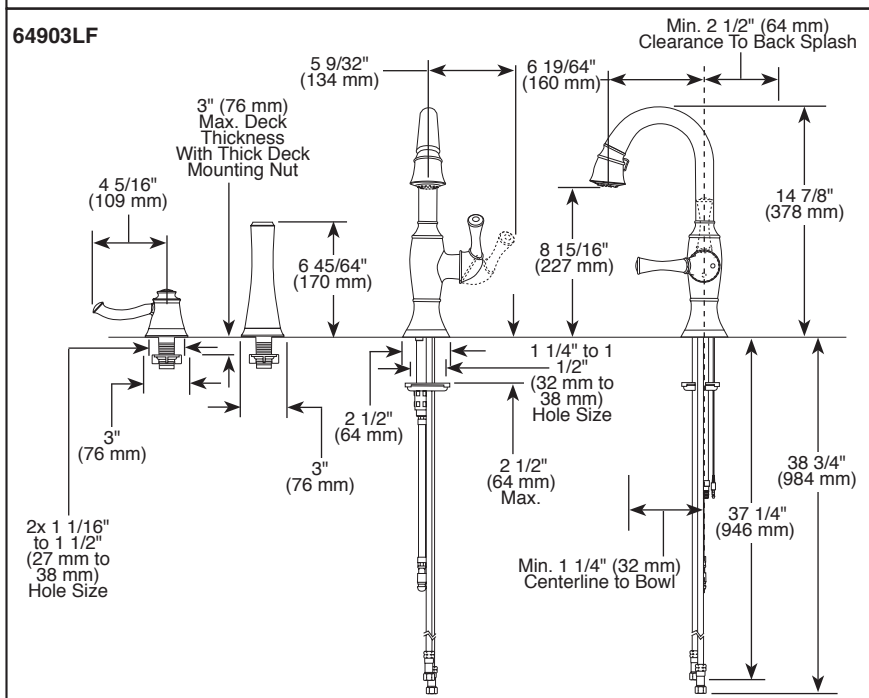
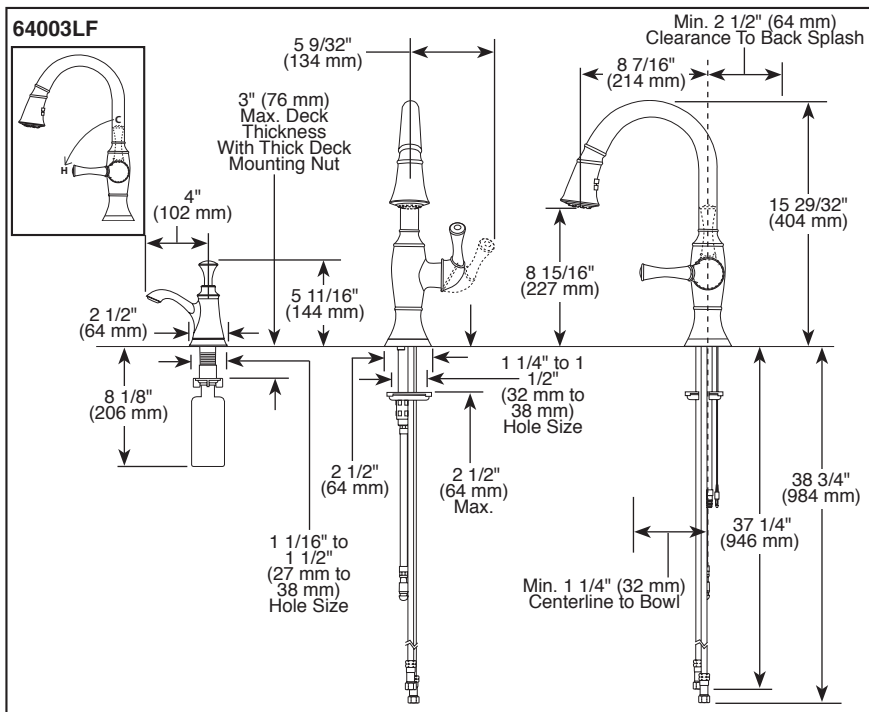


BRIZO® KITCHEN FAUCETS

- Talo® Collection
- Single Handle Deck Mount
- Optional Vase or Towel Hook
- Interchangeable with Soap Dispenser



Submitted Model No.: _____
Specific Features: _____



FEATURES:

- MagneDock® magnetic docking
- Touch-Clean® sprayhead
- SmartTouch® on/off functionality

STANDARD SPECIFICATIONS:

- Maximum 1.8 gpm @ 60 PSI, 6.8 L/Min @ 414 kPa
- One, two, three, or four hole mount (escutcheon optional)
- Control mechanism shall be full-motion valve cartridge
- Rotating spout
- Red/blue indicator markings
- Two function wand; Aerated stream or spray
- Dual integral check valves in sprayer
- LED indicator light signals on-off, water temperature and when batteries run low
- Uses 6 AA (included) or 6 C (optional) batteries
- Optional (EP73954) 120V AC adapter available (3 prong grounded outlet required)
- Quick connect hoses

Note: See 63903LF-* for matching bar/prep

WARRANTY

- Lifetime limited warranty on parts (other than electronic parts and batteries) and finishes; or, for commercial users, for 5 years from date of purchase.
- 5 year limited warranty on electronic parts (other than batteries); or, for commercial users, for 1 year from the date of purchase. No warranty is provided on batteries.

COMPLIES WITH:

- ASME A112.18.1 / CSA B125.1
- ASME A112.18.6
- Indicates compliance to ICC/ANSI A117.1
- Verified compliant with .25% weighted average Pb content regulations.

▲ Designate proper finish suffix

Brizo reserves the right (1) to make changes in specifications and materials, and (2) to change or discontinue models, both without notice or obligation. Dimensions are for reference only. See current full-line price book or www.brizo.com for finish options and product availability.

BSP-K-64003LF Rev. L

Brizo Kitchen & Bath Company
Indianapolis, Indiana 46280
A Division of Masco Corporation of Indiana
© 2015 Brizo Kitchen & Bath Company