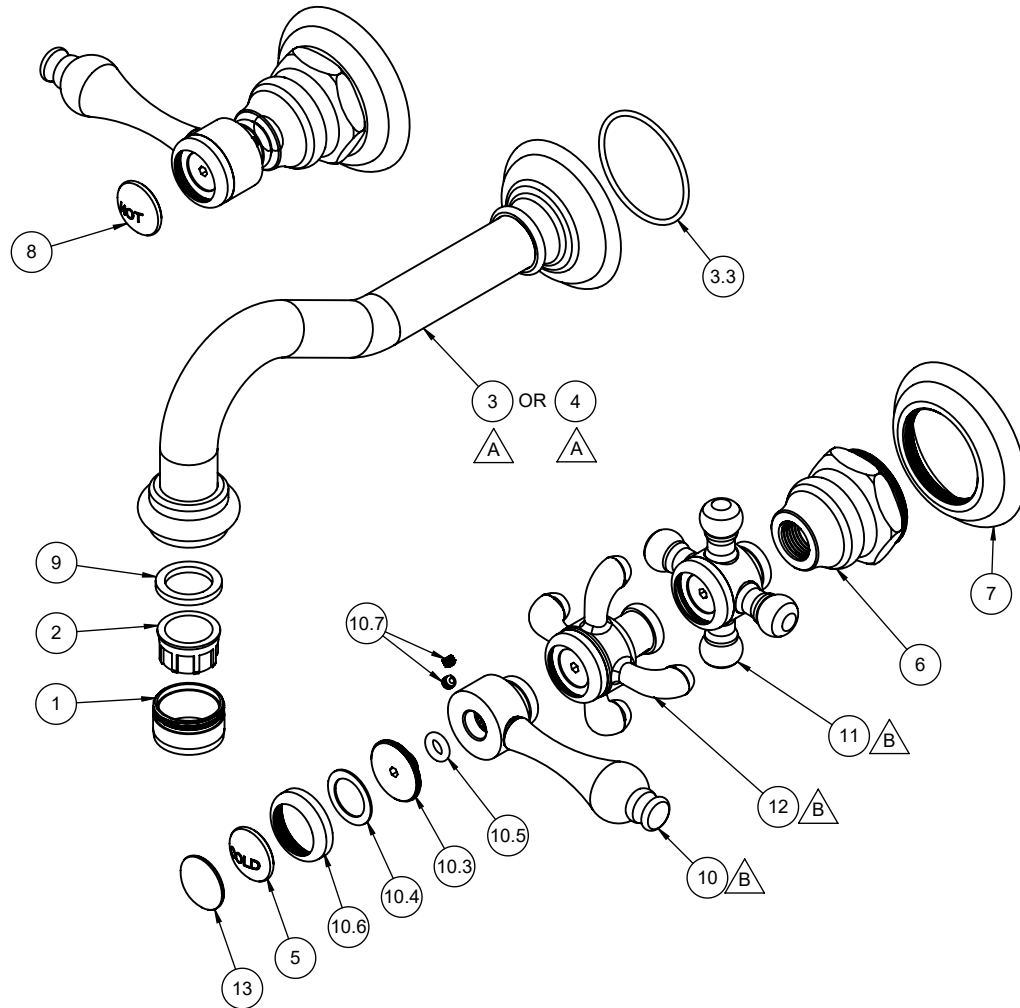


- △ REQUIRES ITEM 1, 2, AND 9
 △ REQUIRES ITEM 5 OR 8 OR 13



- | | |
|-------------------|--------------|
| TO-V6102-7-MIDX | TO-V6102-7 |
| TO-V6102X-7-MIDX | TO-V6102X-7 |
| TO-V6102XD-7-MIDX | TO-V6102XD-7 |
| TO-V6102-9-MIDX | TO-V6102-9 |
| TO-V6102X-9-MIDX | TO-V6102X-9 |
| TO-V6102XD-9-MIDX | TO-V6102XD-9 |

To order spare parts add and/or replace as stated below:

SPD- prefix added to part number(s)
 -ZZ replaced with finish code (see finish table)
 -WW replaced with -90 (light finish) or -96 (dark finish)

Ex: SPD-7-100463-PC or SPD-86030-96

ITEM	PART NO.	DESCRIPTION	QTY
1	880168-ZZ	SHELL, STD 15/16"-27, MALE THD	1
2	880354-81	INSERT, 1.2 GPM STD AERATED (PCA PERLATOR)	1
for all -7	3	7-100081-ZZ ASM, VS SPOUT, 7" TRAD TUBE STYLE, "NL" (incl. 3.3)	1
	3.3	87023-80 O-RING 37.82 X 1.78 (-029) BUNA-N A70	1
for all -9	4	7-100082-ZZ ASM, VS SPOUT, 9" TRAD TUBE STYLE, "NL" (incl. 3.3)	1
5	471043-40	BUTTON, INDEX, 47, COLD, PORC (Ø20 X 5.5MM)	1
6	11061-ZZ	ESC, HEX BOTTOM, W/ 1-3/8-28 THD	2
7	11121-ZZ	BASE RING, TRAD, Ø59.5 W/ 1-3/8-28 THD	2
8	471045-40	BUTTON, INDEX, 47, HOT, PORC (Ø20 X 5.5MM)	1
9	881829-99	WSHR AERATOR, .839 X .590 X .110 EPDM A70 (NSF 61)	1
for 61 Series	10	7-100219-ZZ ASM, HANDLE, RD HUB & TRAD LVR W/BEZEL (incl. 10.3, 10.4, 10.5, 10.6, 10.7)	2
	10.3	10610-15B INSERT, THD, BEZEL HDL	1
	10.4	87136-80 WSHR Ø14.00 X Ø20.50 X 0.60MM	1
	10.5	87154-80 O-RING Ø5.23 X 2.62 (-107) BUNA-N A70	1
	10.6	10575-ZZ BEZEL, MULTI HANDLE	1
	10.7	86030-WW SETSCREW 8-32 X 1/8 SCKT HD CUP PT SS	2
for 61X Series	11	7-100534-ZZ ASM, CROSS HANDLE, TRADS (incl. 10.3, 10.4, 10.5, 10.6, 10.7)	2
for 61XD Series	12	7-100223-ZZ ASM, DROOP BULB X-HDL W/ BEZEL (incl. 10.3, 10.4, 10.5, 10.6, 10.7)	2
for -MIDX Series	13	471168-ZZ BUTTON, INDEX, METAL	2
for ITEM 10.7	14	882042-99 KEY, ALLEN, 5/64", BLACK	1