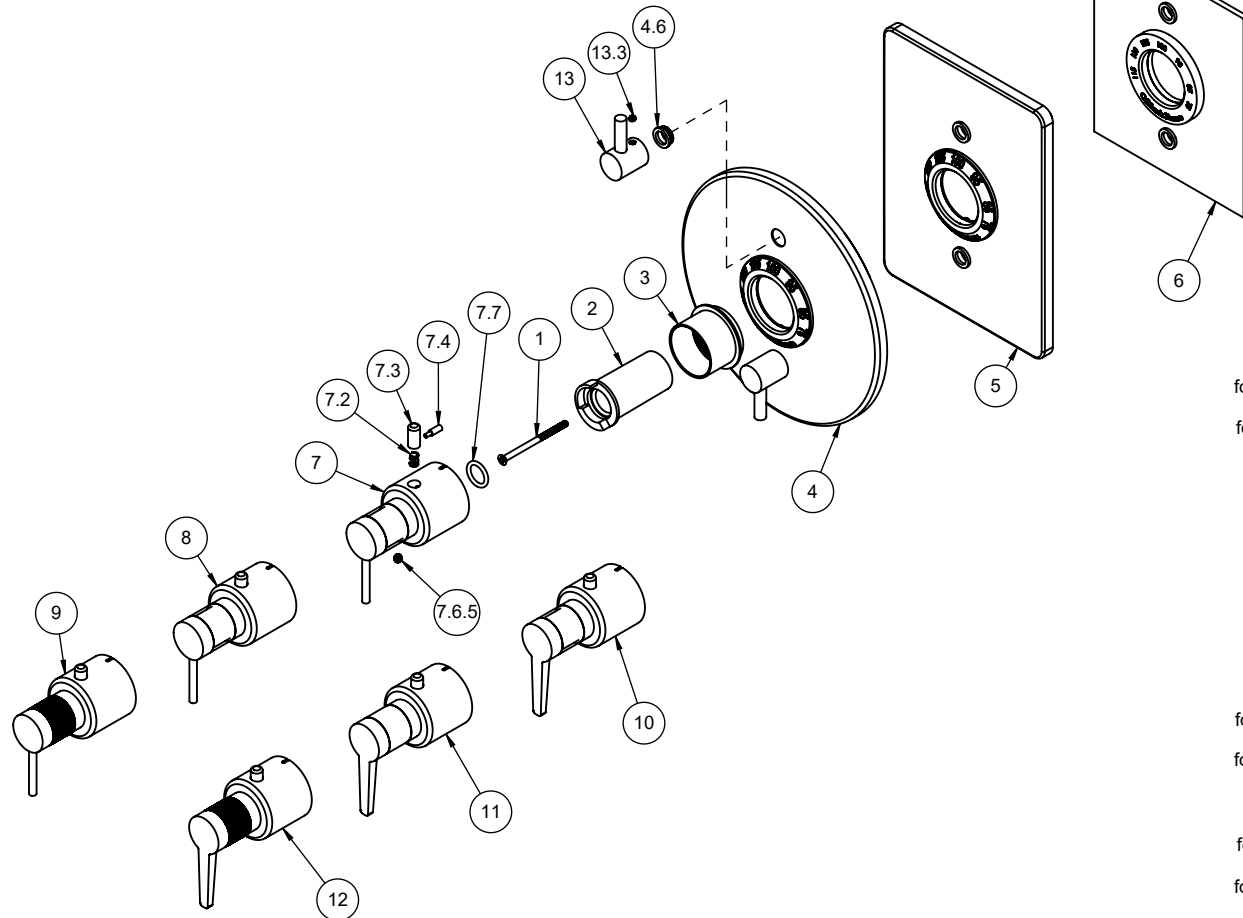


TO-THF2L-52	TO-THC2L-52	TO-TH2L-52
TO-THF2L-52F	TO-THC2L-52F	TO-TH2L-52F
TO-THF2L-52K	TO-THC2L-52K	TO-TH2L-52K
TO-THF2L-53	TO-THC2L-53	TO-TH2L-53
TO-THF2L-53F	TO-THC2L-53F	TO-TH2L-53F
TO-THF2L-53K	TO-THC2L-53K	TO-TH2L-53K



To order spare parts add and/or replace as stated below:
SPD- prefix added to part number(s)
-ZZ replaced with finish code (see finish table)
-WW replaced with **-90** (light finish) or **-96** (dark finish)
 Ex: **SPD-7-100463-PC** or **SPD-86030-96**

ITEM	PART NO.	DESCRIPTION	QTY
1	86059-90	SCREW M4 X 0.7 X 60MM PH FLT HD SS	1
2	10092-81	STOP, THERM TEMP, SHORT	1
3	10090-ZZ	SLEEVE, THERMO MOUNTING	1
for TO-TH2L	4	7-100042-ZZ ASM, SHWRPLATE, CONT RD, THERM W/2VC (incl. 4.6)	1
	4.6	223467-99 NYLON BUSHING FOR PBS FACEPLATE	2
for TO-THC2L	5	7-100048-ZZ ASM, SHWRPLATE, CONT SQ. THERM W/ 2 VC (incl. 4.6)	1
for TO-THF2L	6	7-100240-ZZ ASM, SHWRPLATE, CONT FLAT, THERM W/2 VC (incl. 4.6)	1
for 52 Series	7	TH-H-52-ZZ THERM HANDLE KIT (incl. 7.2, 7.3, 7.4, 7.6.5, 7.7)	1
	7.2	10098-90 SPRING, Ø.24 X .312 LG, 1.4 LB/IN	1
	7.3	10093-81 BUTTON, BLACK THERM	1
	7.4	10062-98 PIN, THERMO BONNET	1
	7.6.5	86033-WW SETSCREW 10-24 X 3/16 SCKT HD CUP PT SS	1
	7.7	87222-80 O-RING Ø13.94 X 2.62 (-113) EPDM A70 (NSF61-12 & WRAS)	1
for 52F Series	8	TH-H-52F-ZZ THERM HANDLE KIT (incl. 7.2, 7.3, 7.4, 7.6.5, 7.7)	1
for 52K Series	9	TH-H-52K-ZZ THERM HANDLE KIT (incl. 7.2, 7.3, 7.4, 7.6.5, 7.7)	1
for 53 Series	10	TH-H-53-ZZ THERM HANDLE KIT (incl. 7.2, 7.3, 7.4, 7.6.5, 7.7)	1
for 53F Series	11	TH-H-53F-ZZ THERM HANDLE KIT (incl. 7.2, 7.3, 7.4, 7.6.5, 7.7)	1
for 53K Series	12	TH-H-53K-ZZ THERM HANDLE KIT (incl. 7.2, 7.3, 7.4, 7.6.5, 7.7)	1
	13	7-100375-ZZ ASM, FLAT STICK THERM VC HDL (incl. 13.3)	2
	13.3	86030-WW SETSCREW 8-32 X 1/8 SCKT HD CUP PT SS	1
for ITEM 13.3	16	882042-99 KEY, ALLEN, 5/64", BLACK	1
for ITEM 7.6.5	17	882043-99 KEY, ALLEN, 3/32", BLACK	1