



FVN6124

STELLA

INSTALLATION GUIDE

CONTENTS:

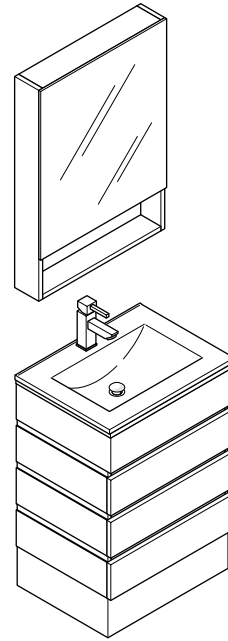
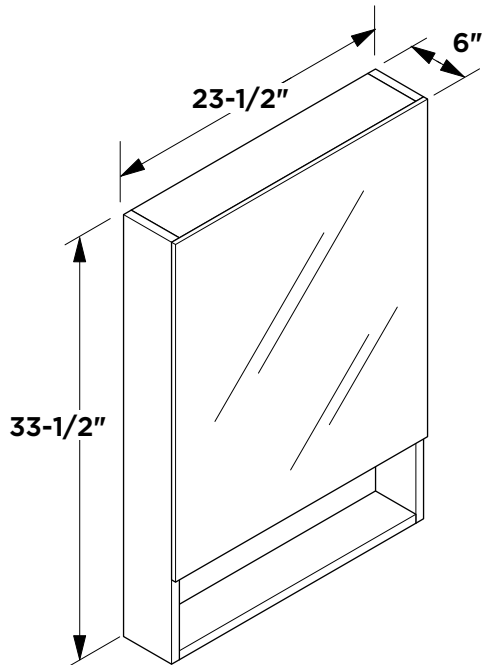
Cabinet.....(FCB6124).....	PAGE 3 (STEP 1)
Sink.....(FVS6124).....	PAGE 3 (STEP 2)
Medicine Cabinet...(FMC6124).....	PAGE 1



FVN6124
AMATO
INSTALLATION GUIDE

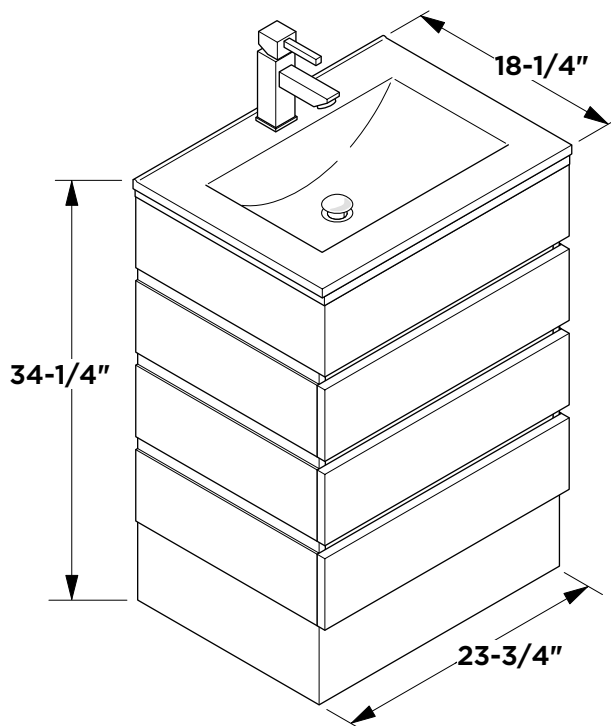

FRESCA™

Medicine Cabinet

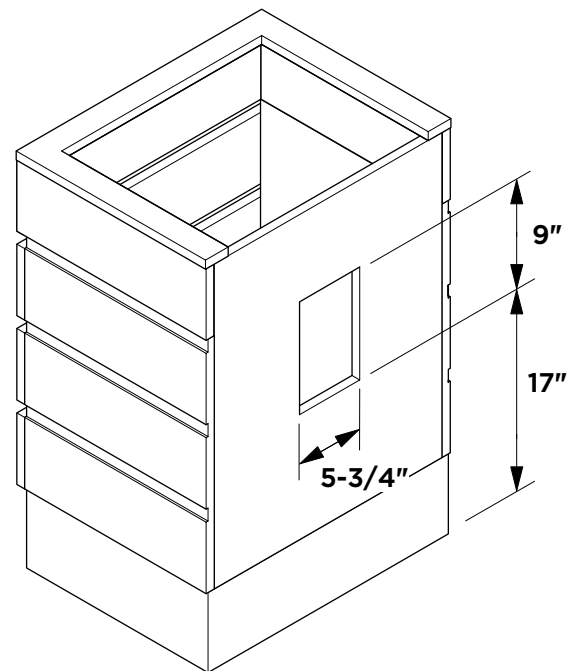


FVN6124

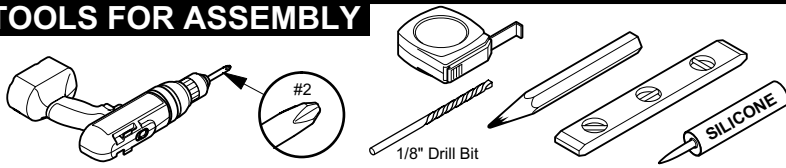
Vanity Front



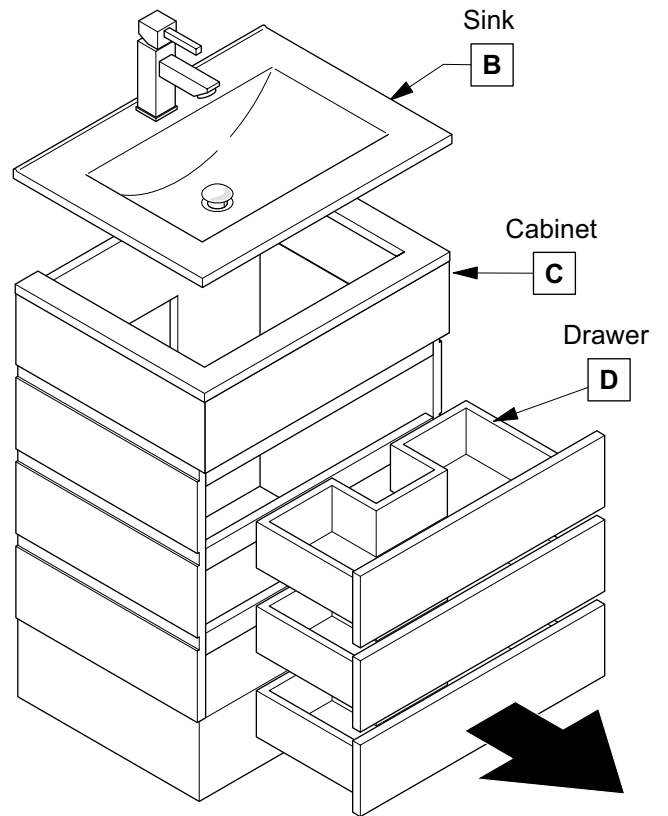
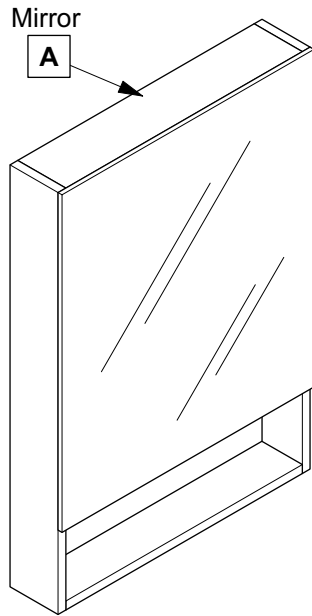
Vanity Back



TOOLS FOR ASSEMBLY

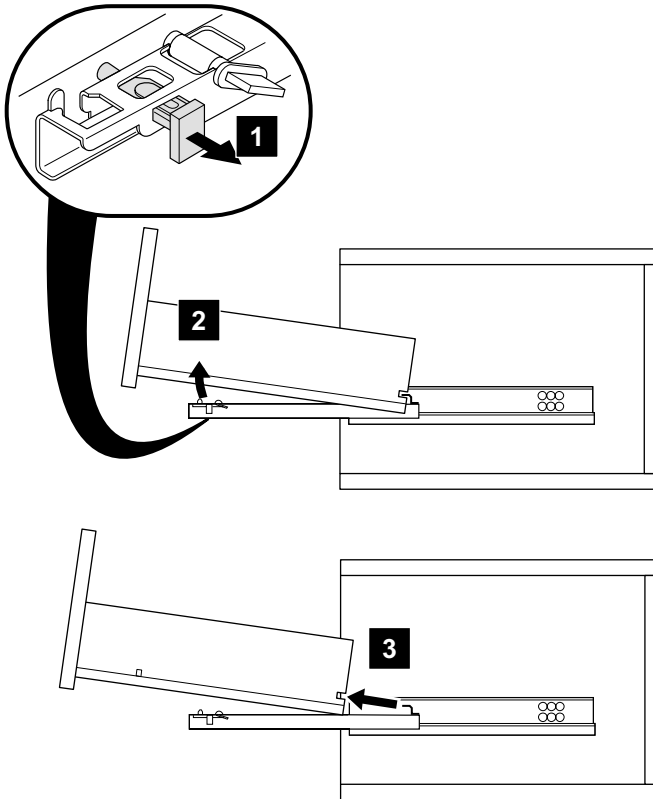


PARTS

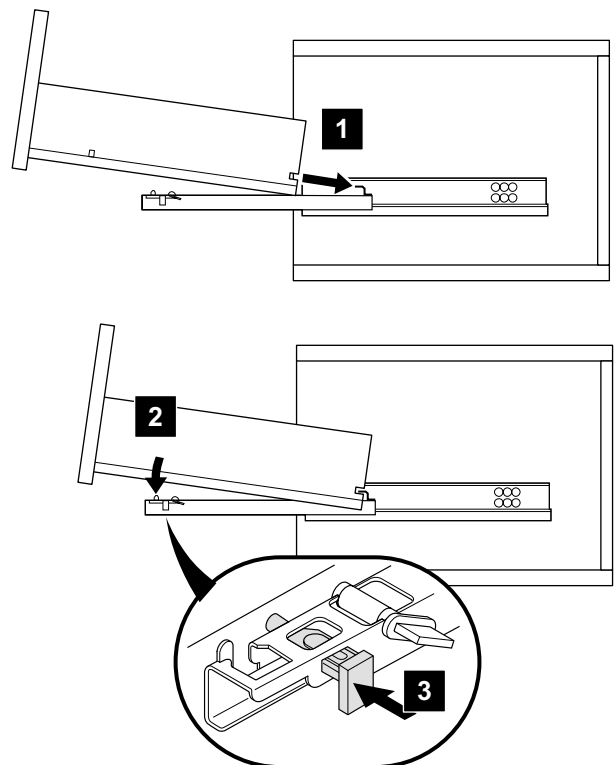


DRAWER REMOVAL & INSTALLATION

REMOVAL



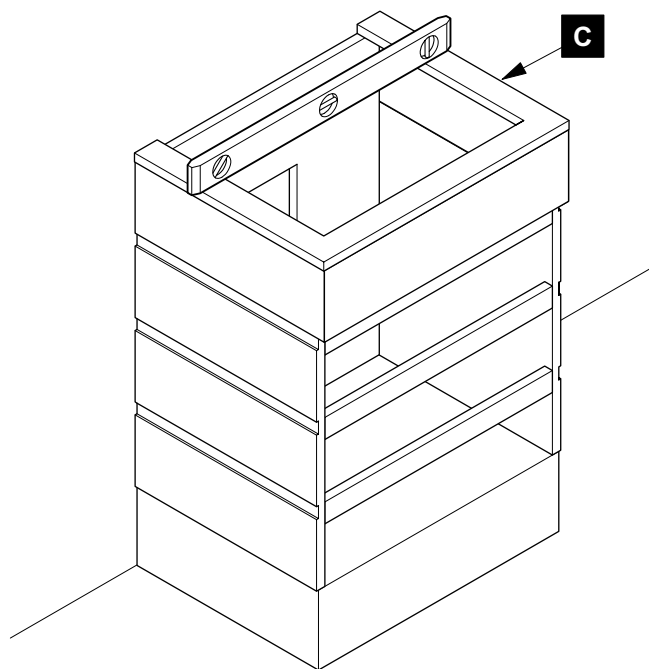
INSTALLATION



1

Position cabinet (C)

IMPORTANT: Consult an expert for the proper screws/bolts to use when attaching to various wall constructions. Screws provided do not attach to all wall construction types.



2

Apply silicone and install sink (B)

