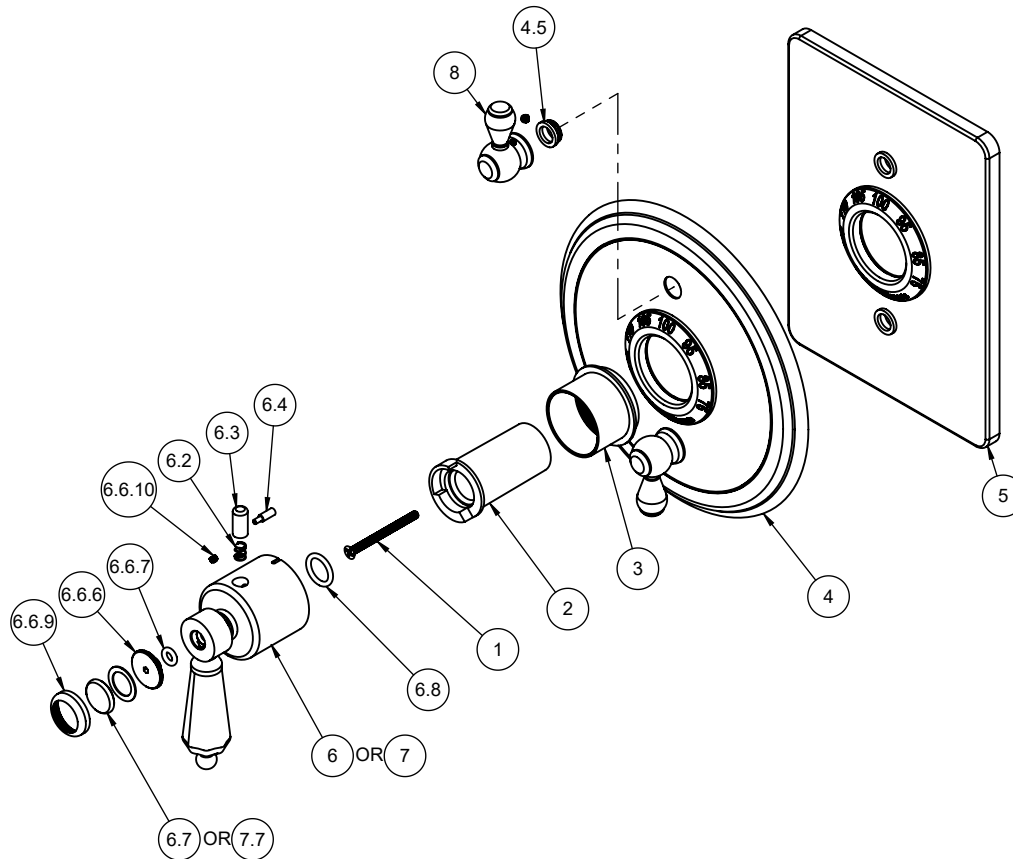


TO-TH2L-68
TO-TH2L-68-MIDX
TO-THC2L-68
TO-THC2L-68-MIDX



To order spare parts add and/or replace as stated below:

SPD- prefix added to part number(s)
-ZZ replaced with finish code (see finish table)
-WW replaced with **-90** (light finish) or **-96** (dark finish)

Ex: **SPD-7-100463-PC** or **SPD-86030-96**

ITEM	PART NO.	DESCRIPTION	QTY
1	86255-90	SCREW M4 X 0.7 X 50MM PH FLT HD SS	1
2	10092-81	STOP, THERM TEMP, SHORT	1
3	10090-ZZ	SLEEVE, THERMO MOUNTING	1
for TO-TH2L	4	7-100045-ZZ ASM, SHWRPLATE, TRAD RD, THERM W/2 VC (incl. 4.5)	1
	4.5	223467-99 NYLON BUSHING FOR PBS FACEPLATE	2
for TO-THC2L	5	7-100048-ZZ ASM, SHOWERPLATE, CONT SQ. THERM W/ 2 VC (incl. 4.5)	1
for 68 Series	6	TH-H-68-ZZ THERM HANDLE KIT (incl. 6.2, 6.3, 6.4, 6.6.6, 6.6.7, 6.6.8, 6.6.9, 6.6.10, 6.7, 6.8)	1
	6.2	10098-90 SPRING, Ø.24 X .312 LG, 1.4 LB/IN	1
	6.3	10093-81 BUTTON, BLACK THERM	1
	6.4	10062-98 PIN, THERMO BONNET	1
	6.6.6	10610-15B INSERT, THD, BEZEL HDL	1
	6.6.7	87154-80 O-RING Ø5.23 X 2.62 (-107) BUNA-N A70	1
	6.6.8	87136-80 WSHR Ø14.00 X Ø20.50 X 0.60MM	1
	6.6.9	10575-ZZ BEZEL, MULTI HANDLE	1
	6.6.10	86030-WW SETSCREW 8-32 X 1/8 SCKT HD CUP PT SS	2
	6.7	471071-40 BUTTON, INDEX, 47, BLANK, PORC (Ø20 X 5.5MM)	1
	6.8	87222-80 O-RING Ø13.94 X 2.62 (-113) EPDM A70 (NSF61-12 & WRAS)	1
for 68-MIDX Series	7	TH-H-68-MIDX-ZZ THERM HANDLE KIT (incl. 6.2, 6.3, 6.4, 6.6.6, 6.6.7, 6.6.8, 6.6.9, 6.6.10, 6.8, 7.7)	1
	7.7	471168-ZZ BUTTON, INDEX, METAL	1
	8	7-100109-ZZ ASM, THERM VC - TRAD W/SMTH & CAP (incl. 6.6.10)	2
for ITEM 6.6.10	9	882042-99 KEY, ALLEN, 5/64", BLACK	1