



California Faucets®

Encinitas™

WIDESPREAD LAVATORY FAUCET

Features

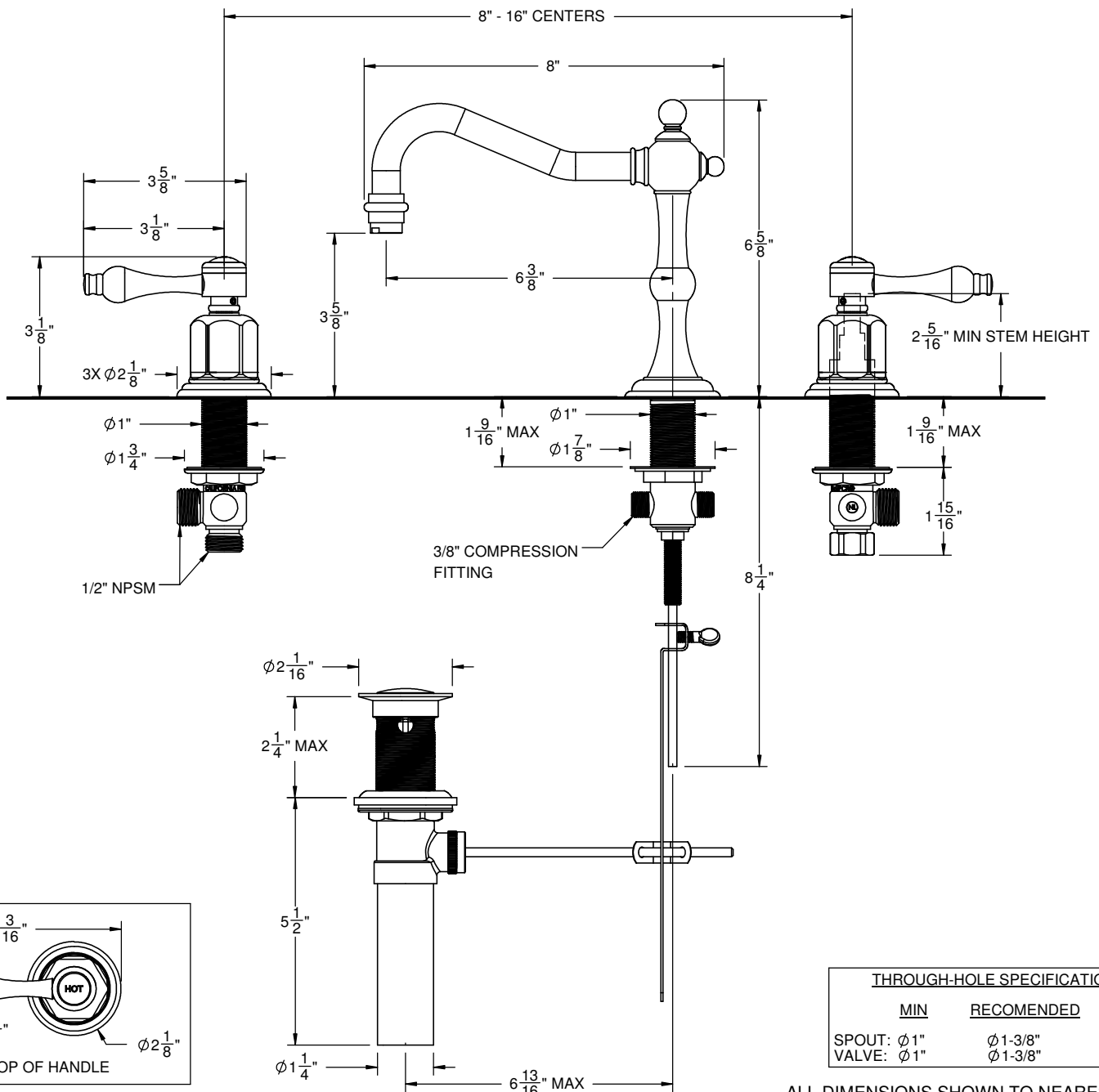
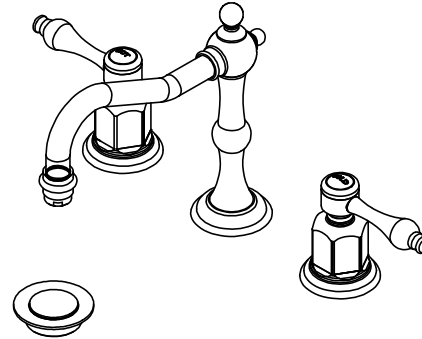
- 6-3/8" spout center to center
- 1/4 turn ceramic disc cartridge(s)
- Flexible braided hoses for ease of installation
- ϕ 1-1/4" all brass lift rod style pop up drain assembly
- 1.2 gpm (4.5 L/min) max flow rate
- Solid brass construction
- Over 30 finishes including 15 PVD finishes

Codes/Standards

Product meets or exceeds the following:

- ASME A112.18.1/CSA B125.1
- NSF/ANSI 61 & NSF/ANSI 372
- CEC
- ADA compliant

CF-3602



THROUGH-HOLE SPECIFICATIONS			
	MIN	RECOMMENDED	MAX
SPOUT: ϕ 1"		ϕ 1-3/8"	ϕ 1-1/4"
VALVE: ϕ 1"		ϕ 1-3/8"	ϕ 1-1/2"

ALL DIMENSIONS SHOWN TO NEAREST 1/16"

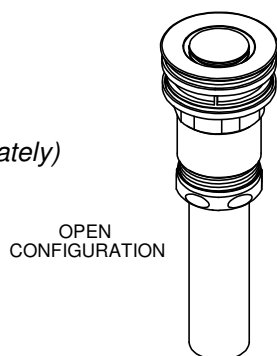
Features

- Stopper is flush with flange in open position
- Easy installation and maintenance of stopper
- For use on sinks with overflow or less overflow
- Polished and finished upper flange and stopper only
- Connection: 1-1/4" x 4" tailpiece (7" version, 9069, sold separately)
- US Patented design No. 915102
- Solid brass construction
- Over 30 finishes including 15 PVD finishes

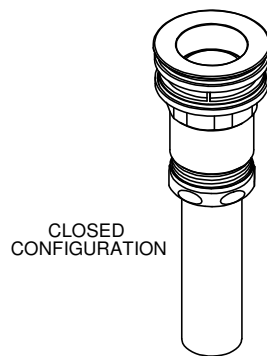
Codes/Standards Applicable

Product meets or exceeds the following:

- ASME A112.18.2/CSA B125.2



OPEN
CONFIGURATION



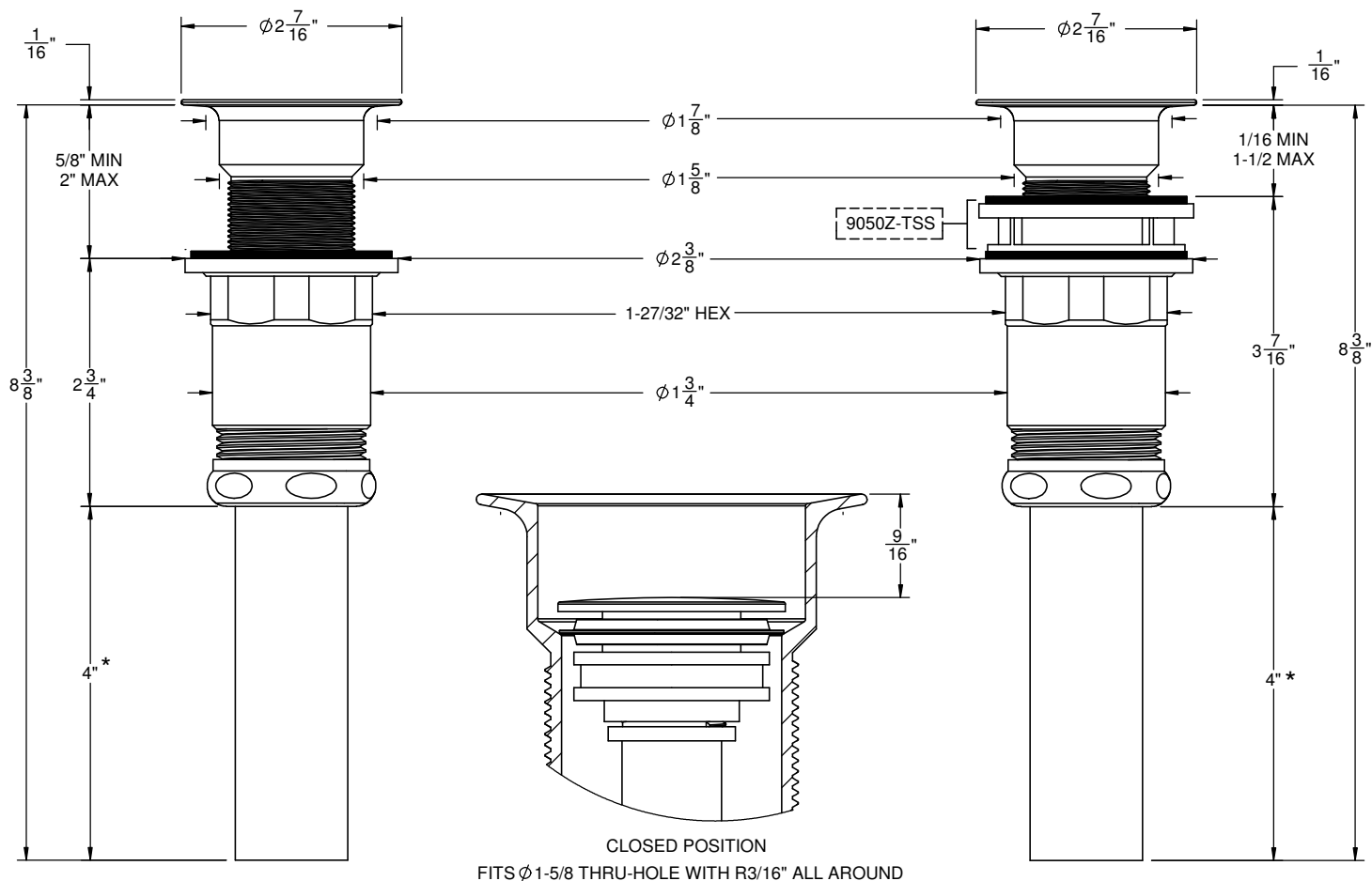
CLOSED
CONFIGURATION

9050Z



THICK SINK APPLICATION
(5/8" - 2")

THIN SINK APPLICATION
(1/16" - 9/16")
SHOWN WITH OPTIONAL 9050Z-TSS



* TAILPIECE MAY BE CUT TO 1" MIN

ALL DIMENSIONS SHOWN TO NEAREST 1/16"